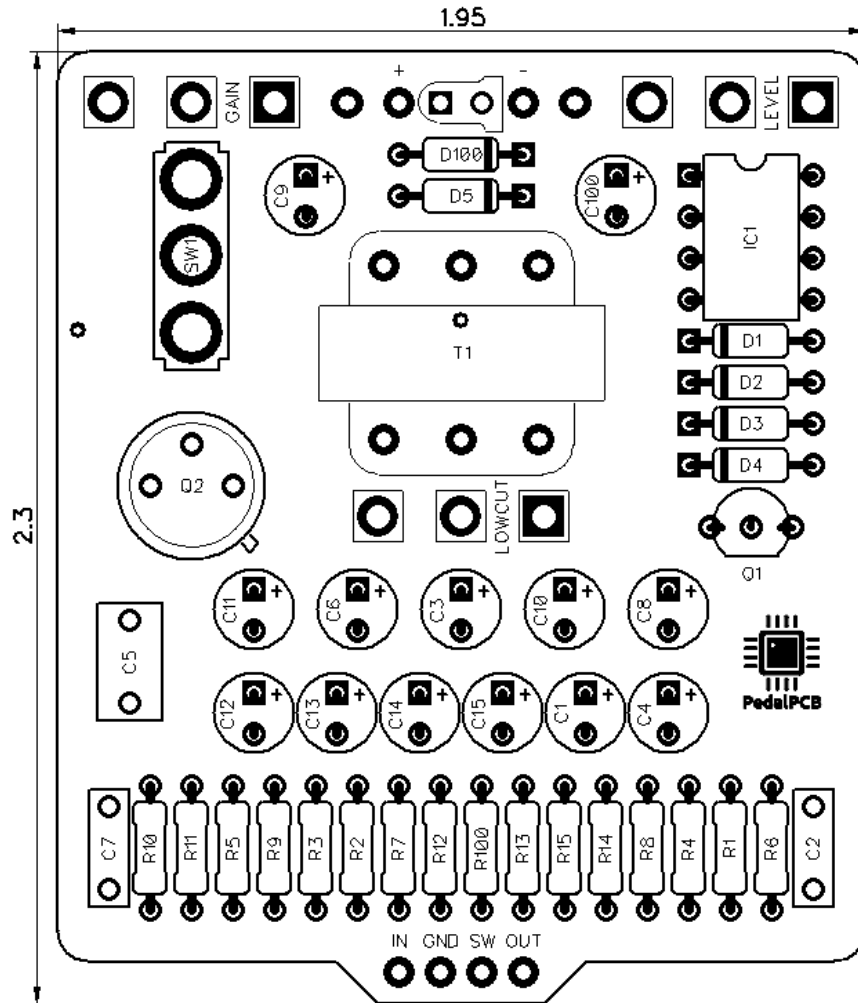




# PedalPCB

## Simulcast

Revision 04.26.20



### Controls

- **Level** - Controls the overall output volume
- **Gain Trim** - Controls the gain of the unit
- **Low Cut** - Attenuates low frequencies
- **Gain (toggle switch)** - Select low or high gain mode

All trademarks and registered trademarks are the property of their respective owners. The company, product, and service names used in this web site are for identification purposes only. Use of these names, logos, and brands does not imply endorsement.

**RESISTORS**

R1 220K  
R2 56K  
R3 33K  
R4 5K6  
R5 1K  
R6 5K6  
R7 1K  
R8 68R  
R9 4K7  
R10 5K6  
R11 5K6  
R12 450R  
R13 10R  
R14 15K  
R15 33K  
R100 4K7

**POTENTIOMETERS**

GAIN A250K  
LOWCUT A10K  
LEVEL B25K

**CAPACITORS**

C1 10u  
C2 330p  
C3 120u **35V**  
C4 10u  
C5 330n  
C6 100u  
C7 1n  
C8 100u  
C9 330u  
C10 120u **35V**  
C11 100u  
C12 10u **35V**  
C13 10u **35V**  
C14 10u **35V**  
C15 10u **35V**  
C100 47u

**TRANSFORMERS**

T1 TY-141P

**TRANSISTORS**

Q1 BC549C  
Q2 OC71

**INTEGRATED CIRCUITS**

IC1 LT1054

**DIODES**

D1 1N5817  
D2 1N5817  
D3 1N5817  
D4 1N5817  
D5 15V  
D100 1N5817

**SWITCHES**

SW1 ON/OFF/ON

