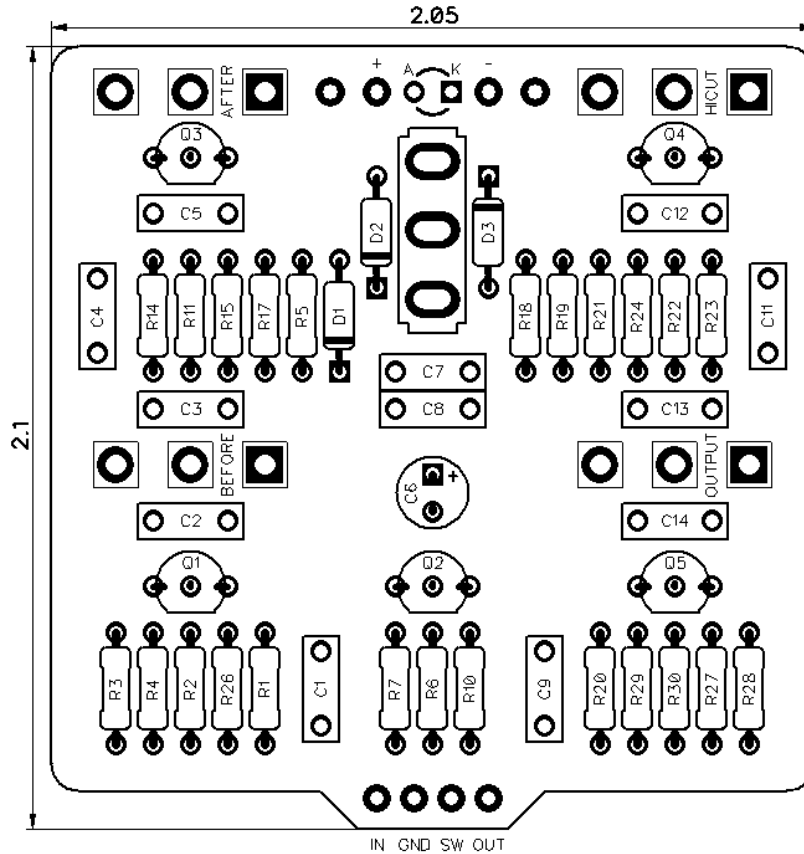


# Carcass Fuzz

Revision 08.05.20



## Resistors

R1	510K
R2	1M
R3	1M
R4	100K
R5	1K
R6	1M
R7	9K1
R10	4K7
R11	1M
R14	220K
R15	100K
R17	47K
R18	220K
R19	220K
R20	100K
R21	220K
R22	1M
R23	100K
R24	1K
R26	1K
R27	1M
R28	100K
R29	1K
R30	470K

## Capacitors

C1	100nF
C2	100nF
C3	100nF
C4	100nF
C5	100nF
C6	100uF
C7	10nF
C8	10nF
C9	680pF
C10	100nF
C11	220nF
C12	100nF
C13	100nF
C14	100nF

## Semiconductors

Q1	2N5089
Q2	2N5089
Q3	2N5089
Q4	2N5089
Q5	2N5089
D1	1N5817
D2	BAT41
D3	BAT41
D4	Indicator LED

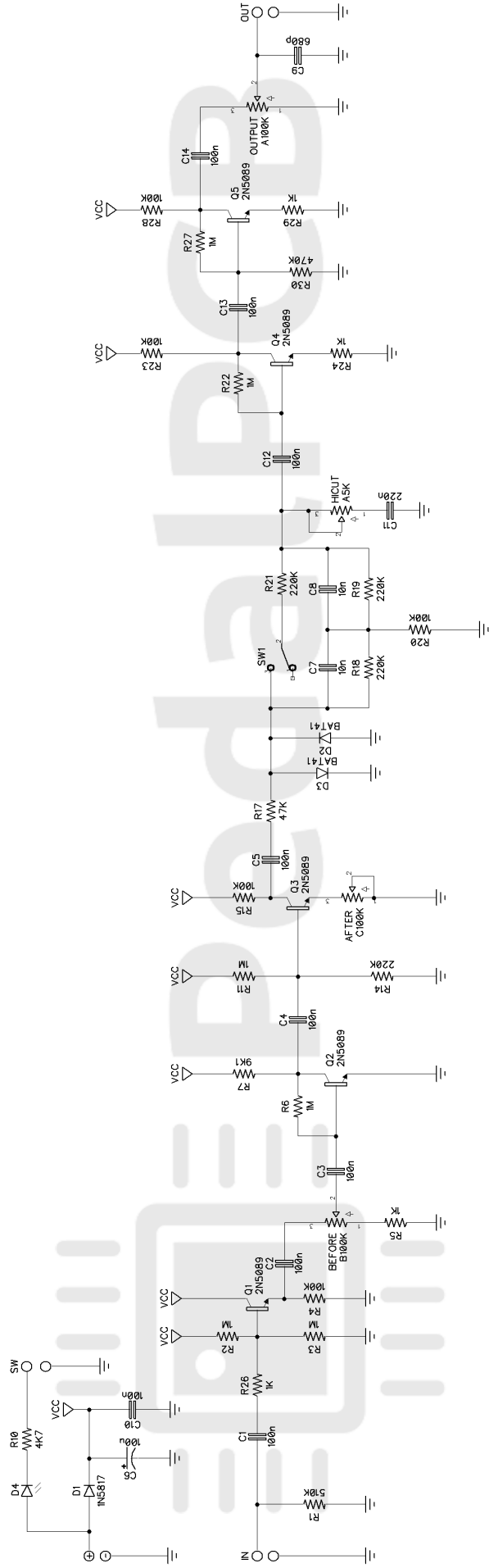
## Potentiometers

AFTER	C100K
BEFORE	B100K
HICUT	A5K
OUTPUT	A100K

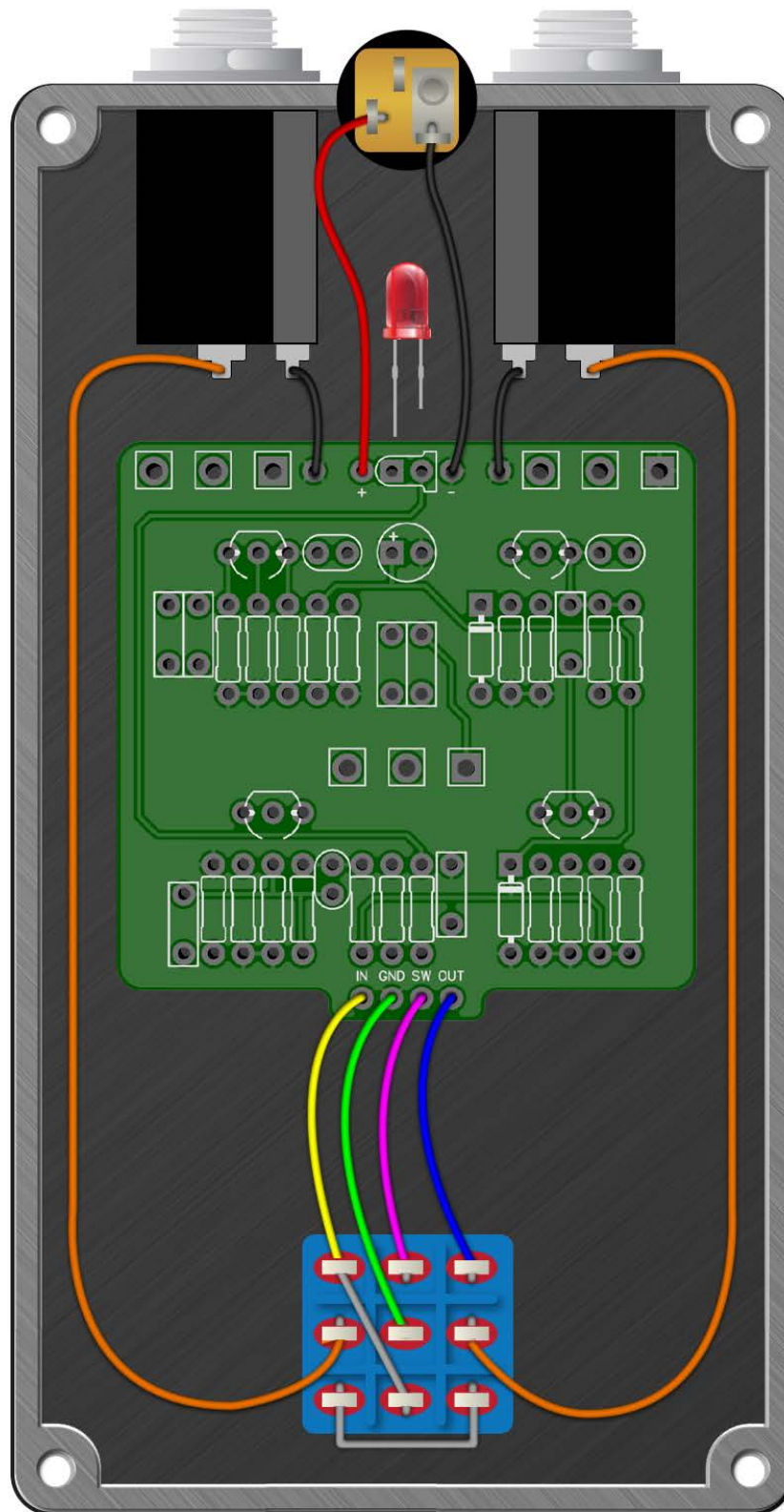
## Switches

SW1	SPDT Toggle (On / On)
-----	-----------------------

# Carcass Fuzz



# Wiring Diagram



# Drill Template

## 4S125B enclosure with top mounted jacks

