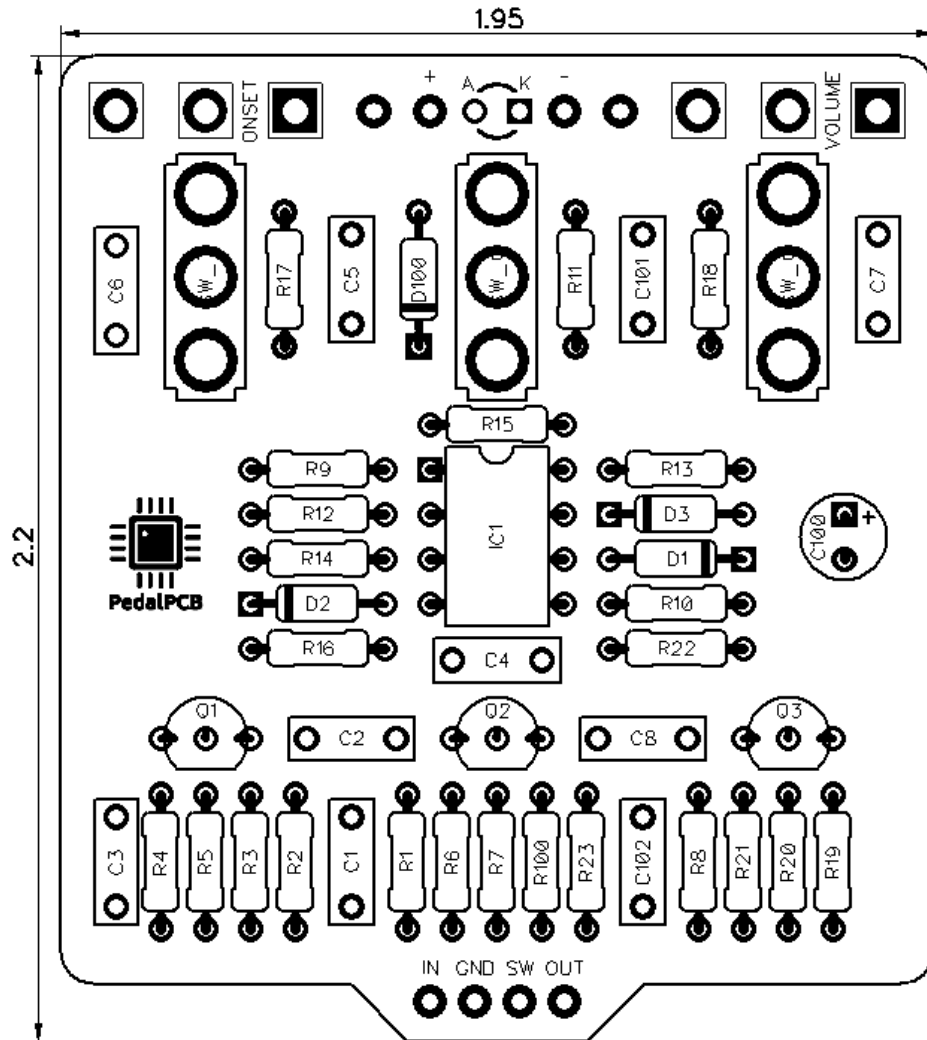




# PedalPCB

## Calamity Fuzz

Revision 08.02.20



### Controls

- Volume
- Onset
- Treble (Toggle switch)
- Gain (Toggle switch)
- Crush (Toggle switch)

All trademarks and registered trademarks are the property of their respective owners. The company, product, and service names used in this web site are for identification purposes only. Use of these names, logos, and brands does not imply endorsement.

**RESISTORS (1/4W)**

R1 2M  
R2 33K  
R3 2M  
R4 16K  
R5 1K  
R6 33K  
R7 680R  
R8 10K  
R9 10M  
R10 100K  
R11 68K  
R12 10M  
R13 270K  
R14 100K  
R15 10M  
R16 680R  
R17 150K  
R18 68K  
R19 1M  
R20 1M  
R21 10K  
R22 1K  
R23 1M  
R100 4K7

**CAPACITORS**

C1 2n2  
C2 100p  
C3 47n  
C4 47n  
C5 47n  
C6 2n2  
C7 47n  
C8 1u (Film / MLCC)  
C100 220u  
C101 100n  
C102 100n

**INTEGRATED CIRCUITS**

IC1 TL072

**TRANSISTORS**

Q1 J201  
Q2 J201  
Q3 2N3904

**DIODES**

D1 1N4148  
D2 5V1 Zener  
D3 1N4148  
D100 1N5817

**POTENTIOMETERS**

VOLUME A100K  
ONSET A100K

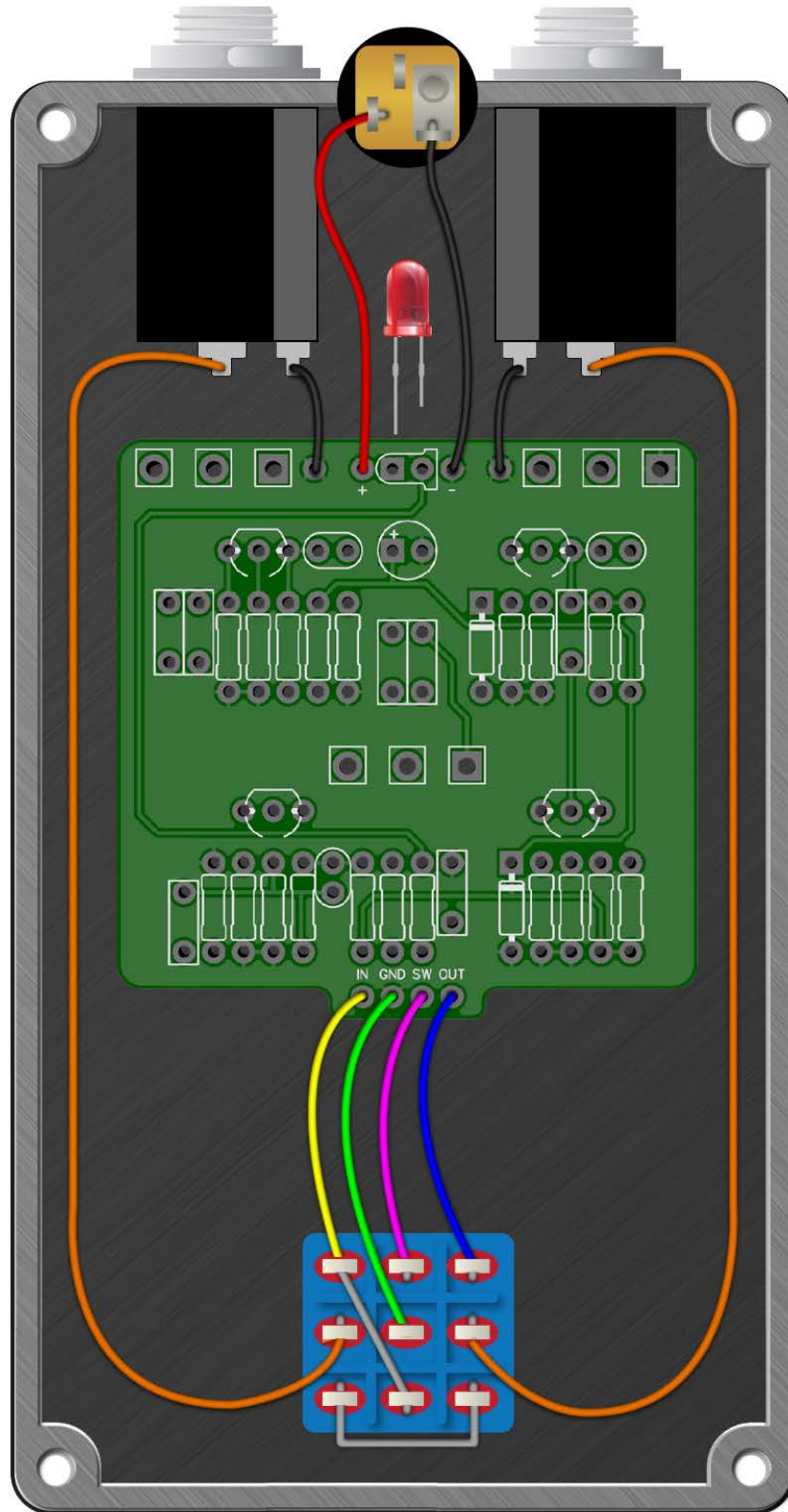
**SWITCHES**

SW\_C SPDT ON/ON  
SW\_G SPDT ON/ON  
SW\_T SPDT ON/ON



# Calamity Fuzz

Wiring Diagram



# Calamity Fuzz

Drill Template  
125B Enclosure

