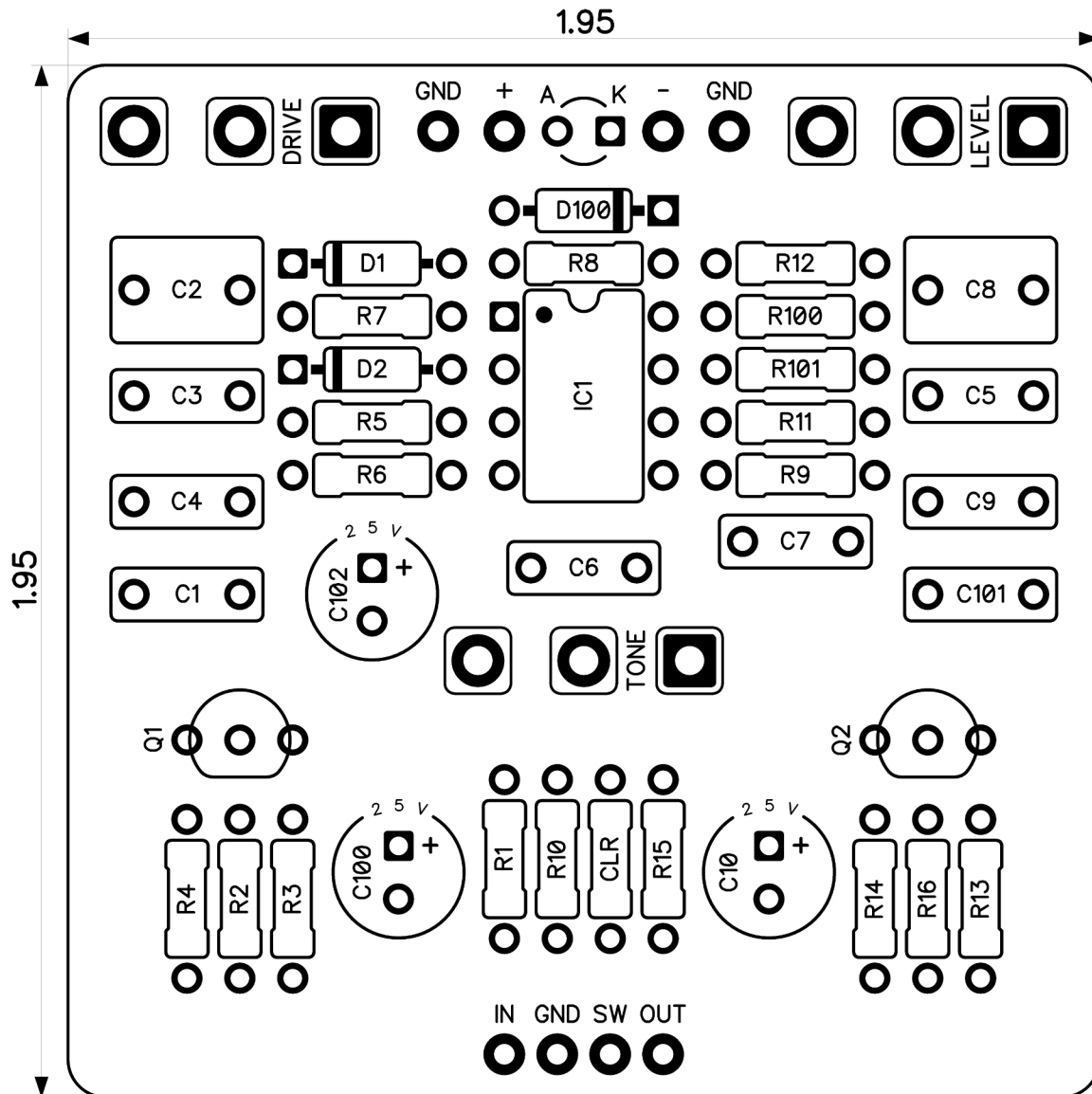




Extreme Scream Machine

Revised 12/15/23



CONTROLS AND FEATURES

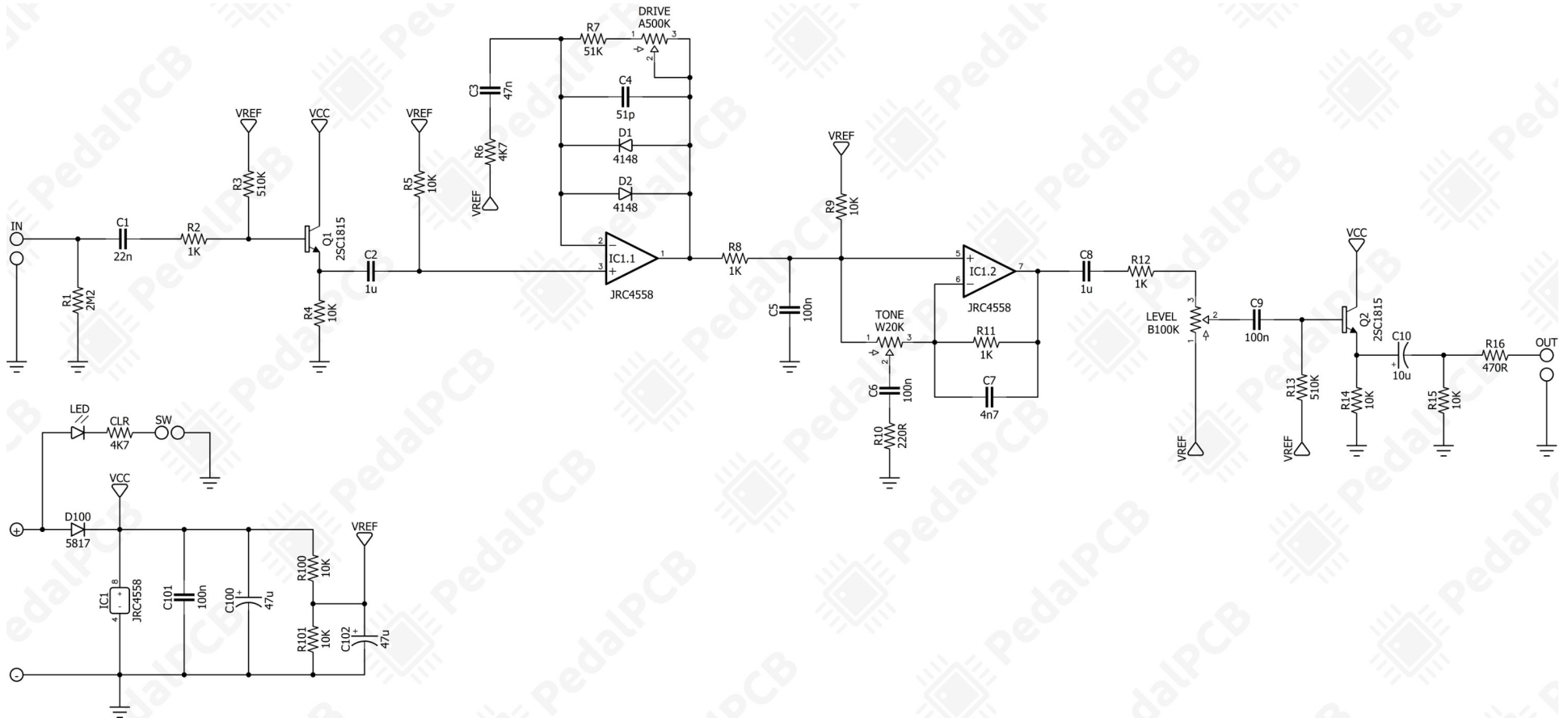
- Level
- Tone
- Drive

All trademarks and registered trademarks are the property of their respective owners. The company, product, and service names used in this web site are for identification purposes only. Use of these names, logos, and brands does not imply endorsement.

LOCATION	VALUE	TYPE	NOTES
R1	2M2	Resistor, 1/4W	
R2	1K	Resistor, 1/4W	
R3	510K	Resistor, 1/4W	
R4	10K	Resistor, 1/4W	
R5	10K	Resistor, 1/4W	
R6	4K7	Resistor, 1/4W	
R7	51K	Resistor, 1/4W	
R8	1K	Resistor, 1/4W	
R9	10K	Resistor, 1/4W	
R10	220R	Resistor, 1/4W	
R11	1K	Resistor, 1/4W	
R12	1K	Resistor, 1/4W	
R13	510K	Resistor, 1/4W	
R14	10K	Resistor, 1/4W	
R15	10K	Resistor, 1/4W	
R16	470R	Resistor, 1/4W	
R100	10K	Resistor, 1/4W	
R101	10K	Resistor, 1/4W	
CLR	4K7	Resistor, 1/4W	* LED current limiting resistor
C1	22n	Film capacitor, 7.2 x 2.5mm	
C2	1u	Film capacitor, 7.2 x 5.0mm	
C3	47n	Film capacitor, 7.2 x 2.5mm	
C4	51p	Ceramic capacitor	
C5	100n	Film capacitor, 7.2 x 2.5mm	
C6	100n	Film capacitor, 7.2 x 2.5mm	
C7	4n7	Film capacitor, 7.2 x 2.5mm	
C8	1u	Film capacitor, 7.2 x 5.0mm	
C9	100n	Film capacitor, 7.2 x 2.5mm	
C10	10u	Electrolytic capacitor, 5mm	
C100	47u	Electrolytic capacitor, 5mm	
C101	100n	Film capacitor, 7.2 x 2.5mm	
C102	47u	Electrolytic capacitor, 5mm	
D1	1N4148	Signal diode, DO-35	
D2	1N4148	Signal diode, DO-35	
D100	1N5817	Schottky diode, DO-41	
Q1	2SC1815	BJT transistor, NPN TO-92	
Q2	2SC1815	BJT transistor, NPN TO-92	
IC1	JRC4558	Dual op-amp, DIP8	
LEVEL	B100K	16mm right-angle PCB mount pot	
TONE	W20K	16mm right-angle PCB mount pot	
DRIVE	A500K	16mm right-angle PCB mount pot	

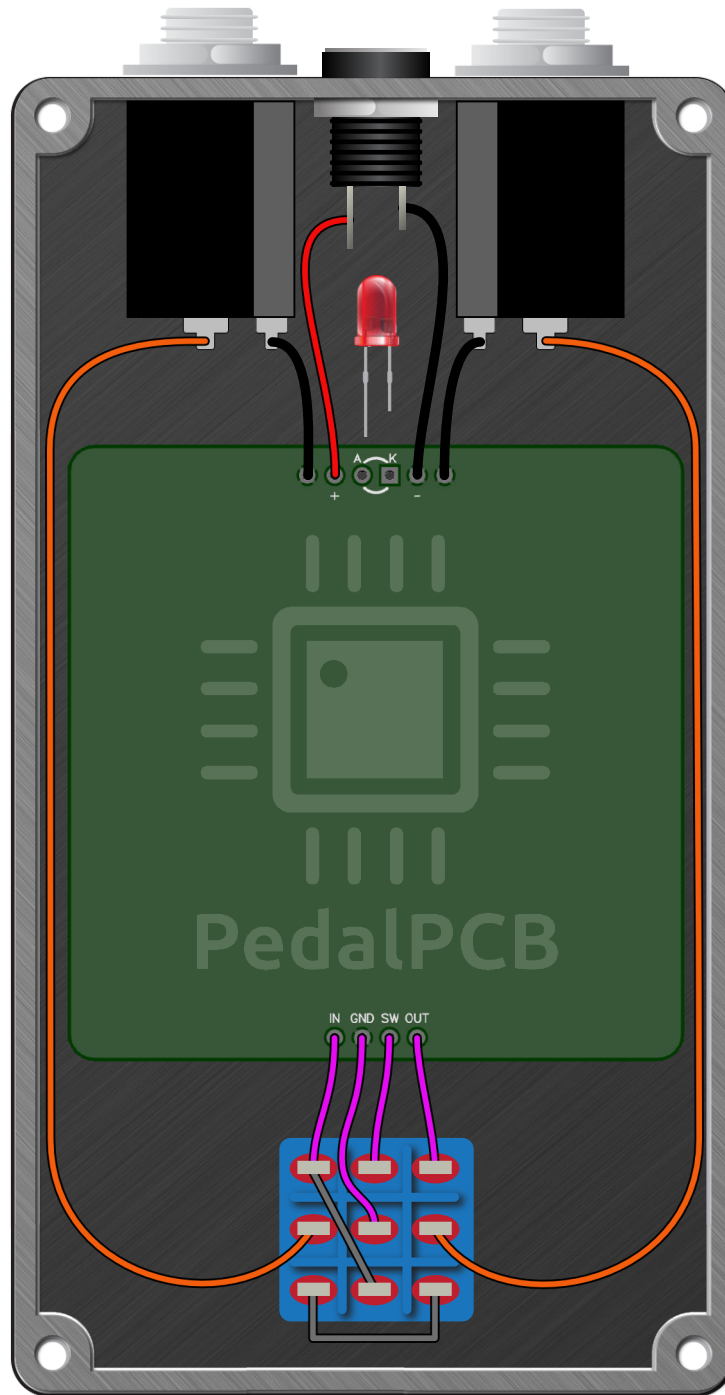
Extreme Scream Machine

Schematic Diagram



Extreme Scream Machine

Wiring Diagram



Extreme Scream Machine

Drill Template
125B Enclosure

