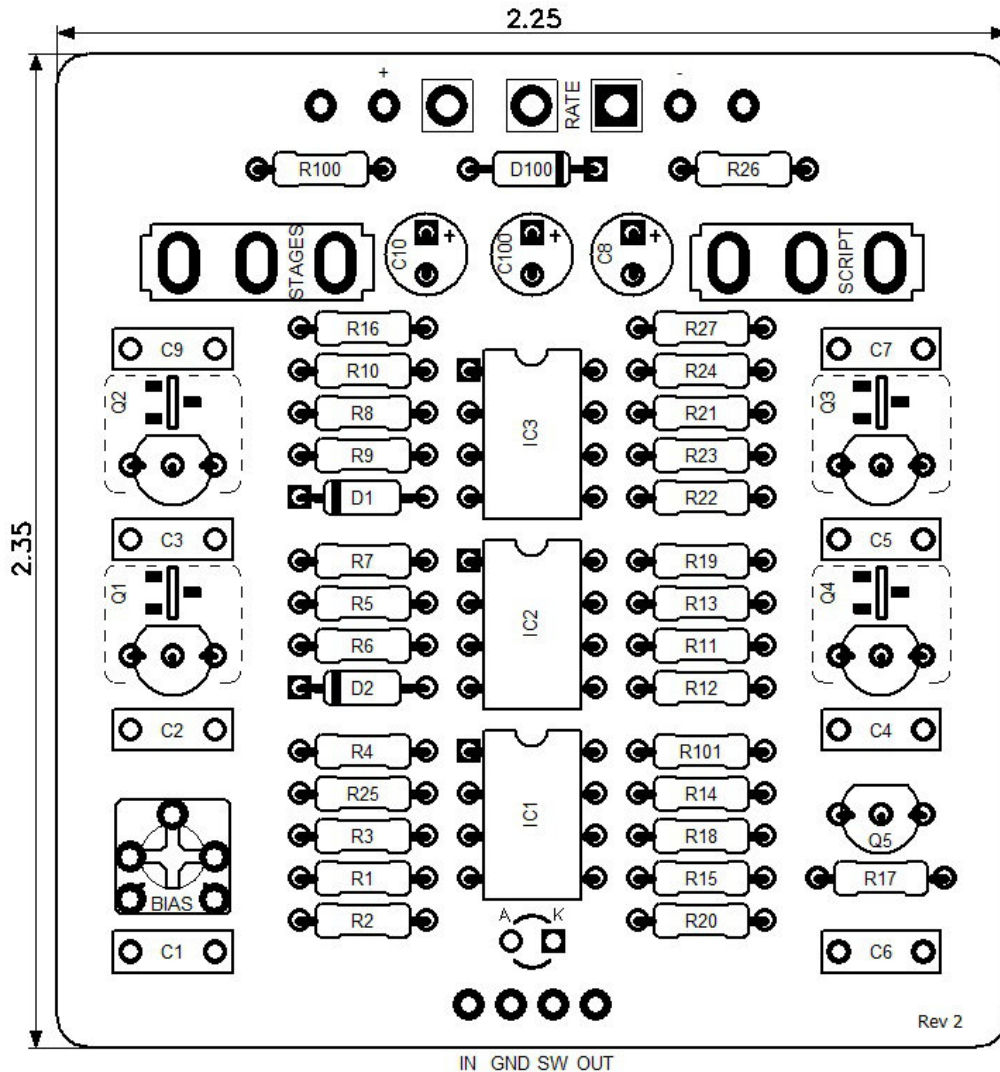




# XC Phase

Revised 7/2/23

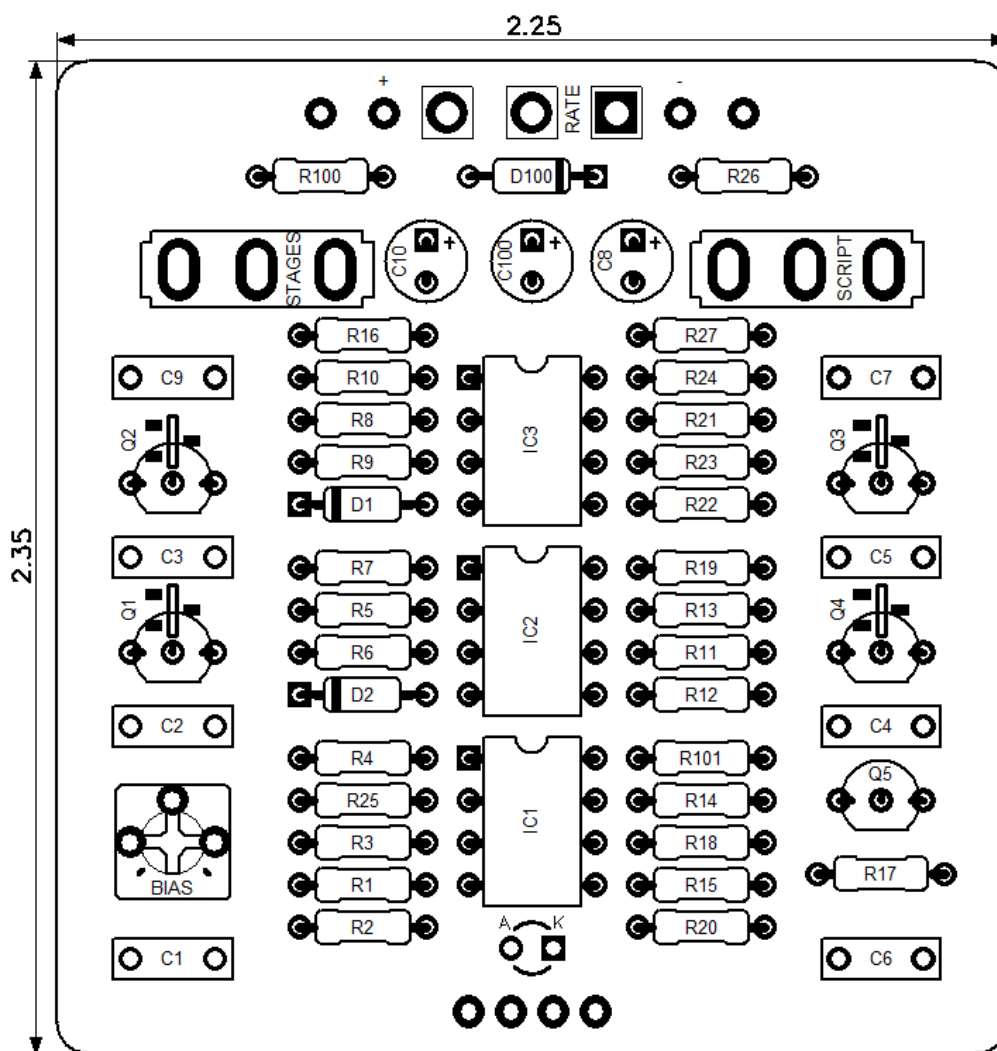


## CONTROLS AND FEATURES

- Rate
- Stages (Toggle switch)
- Script (Toggle switch)

*All trademarks and registered trademarks are the property of their respective owners. The company, product, and service names used in this web site are for identification purposes only. Use of these names, logos, and brands does not imply endorsement.*

## PCB Revision 1 Correction



**NOTE:** Due to a silkscreen error on Revision 1 PCBs, Q1 - Q4 should be installed backwards compared to the silkscreen on the PCB when using 2N5952 transistors. (Correct pinout is marked in the image above)

Revision 1 PCBs can be identified by no "Rev 2" marking in the bottom right-hand corner of the PCB. (See page 1)

Transistor Q5 should be installed as indicated by the silkscreen.

LOCATION	VALUE	TYPE	NOTES
R1	1M	Resistor, 1/4W	
R2	10K	Resistor, 1/4W	
R3	470K	Resistor, 1/4W	
R4	10K	Resistor, 1/4W	
R5	10K	Resistor, 1/4W	
R6	24K	Resistor, 1/4W	
R7	10K	Resistor, 1/4W	
R8	10K	Resistor, 1/4W	
R9	24K	Resistor, 1/4W	
R10	10K	Resistor, 1/4W	
R11	10K	Resistor, 1/4W	
R12	24K	Resistor, 1/4W	
R13	10K	Resistor, 1/4W	
R14	10K	Resistor, 1/4W	
R15	24K	Resistor, 1/4W	
R16	150K	Resistor, 1/4W	
R17	150K	Resistor, 1/4W	
R18	56K	Resistor, 1/4W	
R19	150K	Resistor, 1/4W	
R20	150K	Resistor, 1/4W	
R21	470K	Resistor, 1/4W	
R22	150K	Resistor, 1/4W	
R23	150K	Resistor, 1/4W	
R24	3M9	Resistor, 1/4W	
R25	1M	Resistor, 1/4W	
R26	4K7	Resistor, 1/4W	
R27	22K	Resistor, 1/4W	
R100	4K7	Resistor, 1/4W	
R101	10K	Resistor, 1/4W	
C1	10n	Film capacitor, 7.2 x 2.5mm	
C2	47n	Film capacitor, 7.2 x 2.5mm	
C3	47n	Film capacitor, 7.2 x 2.5mm	
C4	47n	Film capacitor, 7.2 x 2.5mm	
C5	47n	Film capacitor, 7.2 x 2.5mm	
C6	47n	Film capacitor, 7.2 x 2.5mm	
C7	10n	Film capacitor, 7.2 x 2.5mm	
C8	15u	Tantalum capacitor, 5mm	
C9	47n	Film capacitor, 7.2 x 2.5mm	
C10	15u	Tantalum capacitor, 5mm	
C100	100u	Electrolytic capacitor, 5mm	
D1	1N914	Signal diode, DO-35	
D2	5V1	Zener diode, 5.1V 1/2W	
D100	1N5817	Schottky diode, DO-41	
		<i>Continued on next page...</i>	



## XC Phase

## Parts List (Page 2 of 2)

[illegible]





## XC Phase

## Wiring Diagram

