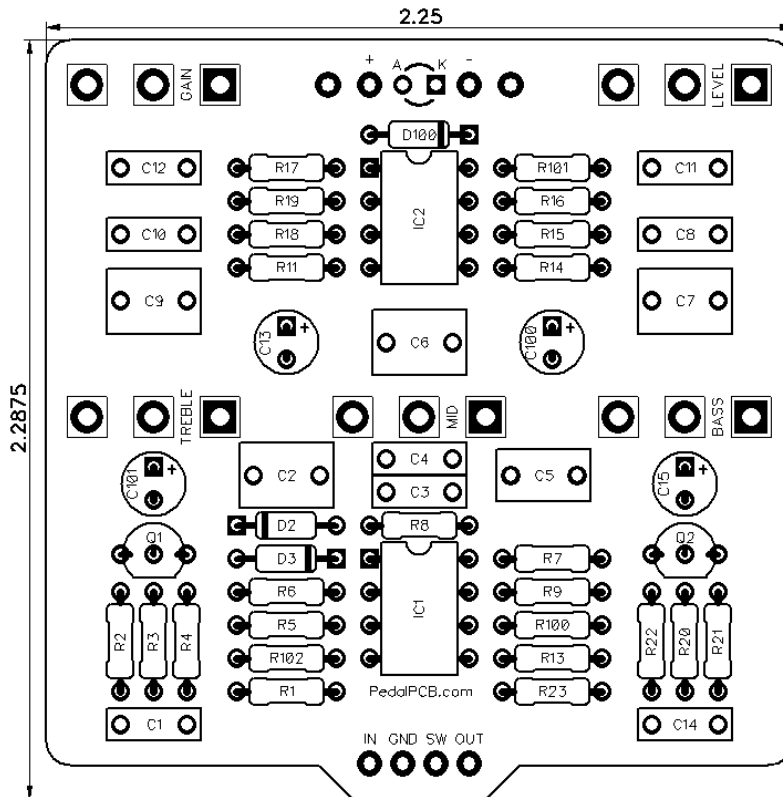




**PedalPCB**

# **XB-MB Boost**

Revised 7/8/20

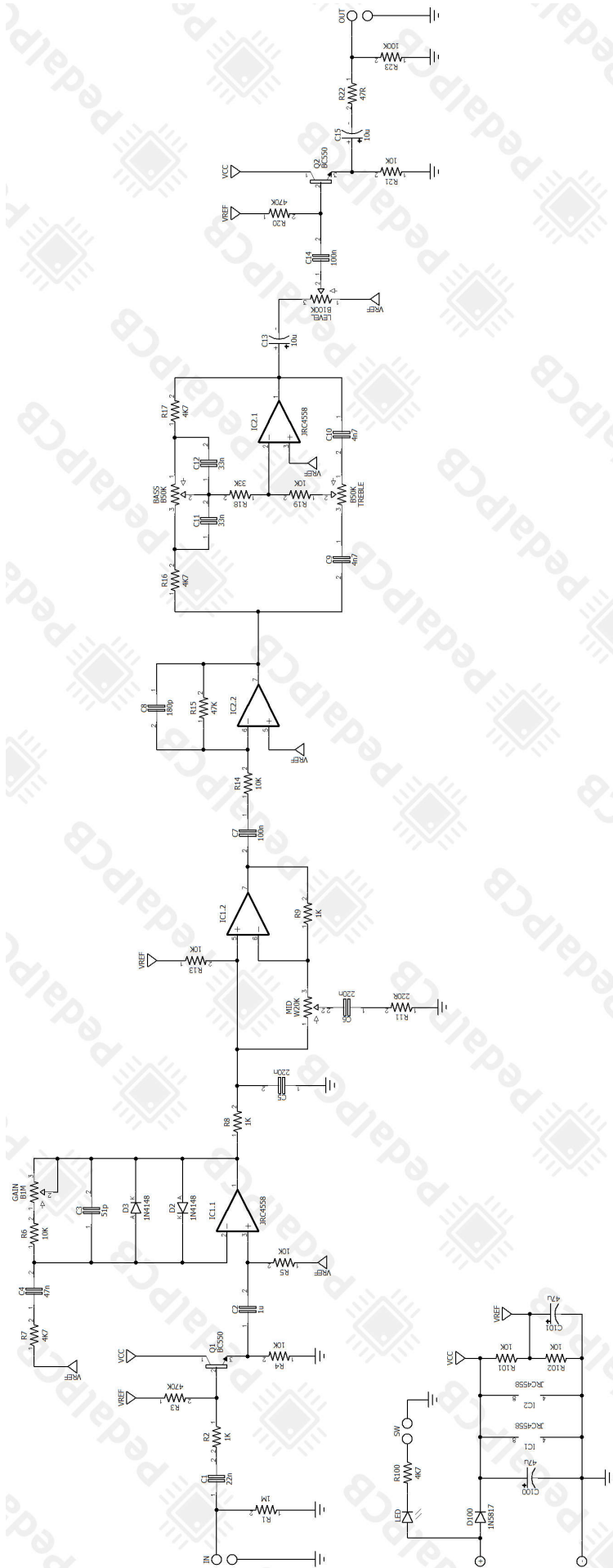


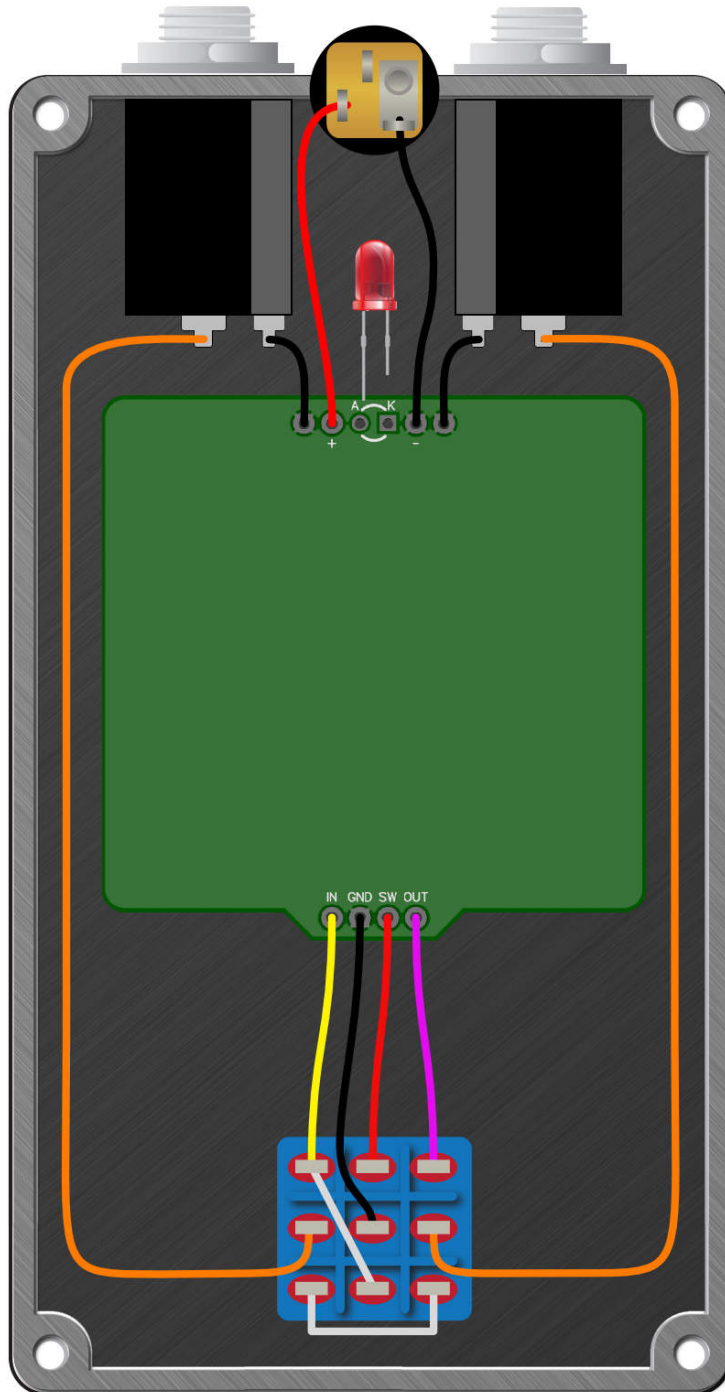
## **CONTROLS**

- |             |                             |
|-------------|-----------------------------|
| • Level     | - Output volume             |
| • Gain      | - Signal gain / drive       |
| • Bass      | - Adjust Bass Cut / Boost   |
| • Mid Boost | - Adjust Mid-Range Boost    |
| • Treble    | - Adjust Treble Cut / Boost |

LOCATION	VALUE	TYPE	NOTES
R1	1M	Resistor, 1/4W	
R2	1K	Resistor, 1/4W	
R3	470K	Resistor, 1/4W	
R4	10K	Resistor, 1/4W	
R5	10K	Resistor, 1/4W	
R6	10K	Resistor, 1/4W	
R7	4K7	Resistor, 1/4W	
R8	1K	Resistor, 1/4W	
R9	1K	Resistor, 1/4W	
R11	220R	Resistor, 1/4W	
R13	10K	Resistor, 1/4W	
R14	10K	Resistor, 1/4W	
R15	47K	Resistor, 1/4W	
R16	4K7	Resistor, 1/4W	
R17	4K7	Resistor, 1/4W	
R18	33K	Resistor, 1/4W	
R19	10K	Resistor, 1/4W	
R20	470K	Resistor, 1/4W	
R21	10K	Resistor, 1/4W	
R22	47R	Resistor, 1/4W	
R23	100K	Resistor, 1/4W	
R100	4K7	Resistor, 1/4W	
R101	10K	Resistor, 1/4W	
R102	10K	Resistor, 1/4W	
C1	22n	Film capacitor, 7.2 x 2.5mm	
C2	1u	Film capacitor, 7.2 x 5mm	
C3	51p	Ceramic capacitor	
C4	47n	Film capacitor, 7.2 x 2.5mm	
C5	220n	Film capacitor, 7.2 x 2.5mm	
C6	220n	Film capacitor, 7.2 x 2.5mm	
C7	100n	Film capacitor, 7.2 x 2.5mm	
C8	180p	Ceramic capacitor	
C9	4n7	Film capacitor, 7.2 x 2.5mm	
C10	4n7	Film capacitor, 7.2 x 2.5mm	
C11	33n	Film capacitor, 7.2 x 2.5mm	
C12	33n	Film capacitor, 7.2 x 2.5mm	
C13	10u	Electrolytic capacitor, 5mm	
C14	100n	Film capacitor, 7.2 x 2.5mm	
C15	10u	Electrolytic capacitor, 5mm	
C100	47u	Electrolytic capacitor, 5mm	
C101	47u	Electrolytic capacitor, 5mm	
D2	1N4148	Signal diode, DO-35	
D3	1N4148	Signal diode, DO-35	
D100	1N5817	Schottky diode, DO-41	
IC1	JRC4558	Dual op-amp, DIP8	
IC2	JRC4558	Dual op-amp, DIP8	

LOCATION	VALUE	TYPE	NOTES
Q1	BC550	BJT transistor, NPN TO-92	
Q2	BC550	BJT transistor, NPN TO-92	
LEVEL	B100K	16mm right-angle PCB mount pot	
GAIN	B1M	16mm right-angle PCB mount pot	
BASS	B50K	16mm right-angle PCB mount pot	
MID	W20K	16mm right-angle PCB mount pot	
TREBLE	B50K	16mm right-angle PCB mount pot	





# **XB-MB Boost**

Drill Template  
125B enclosure

