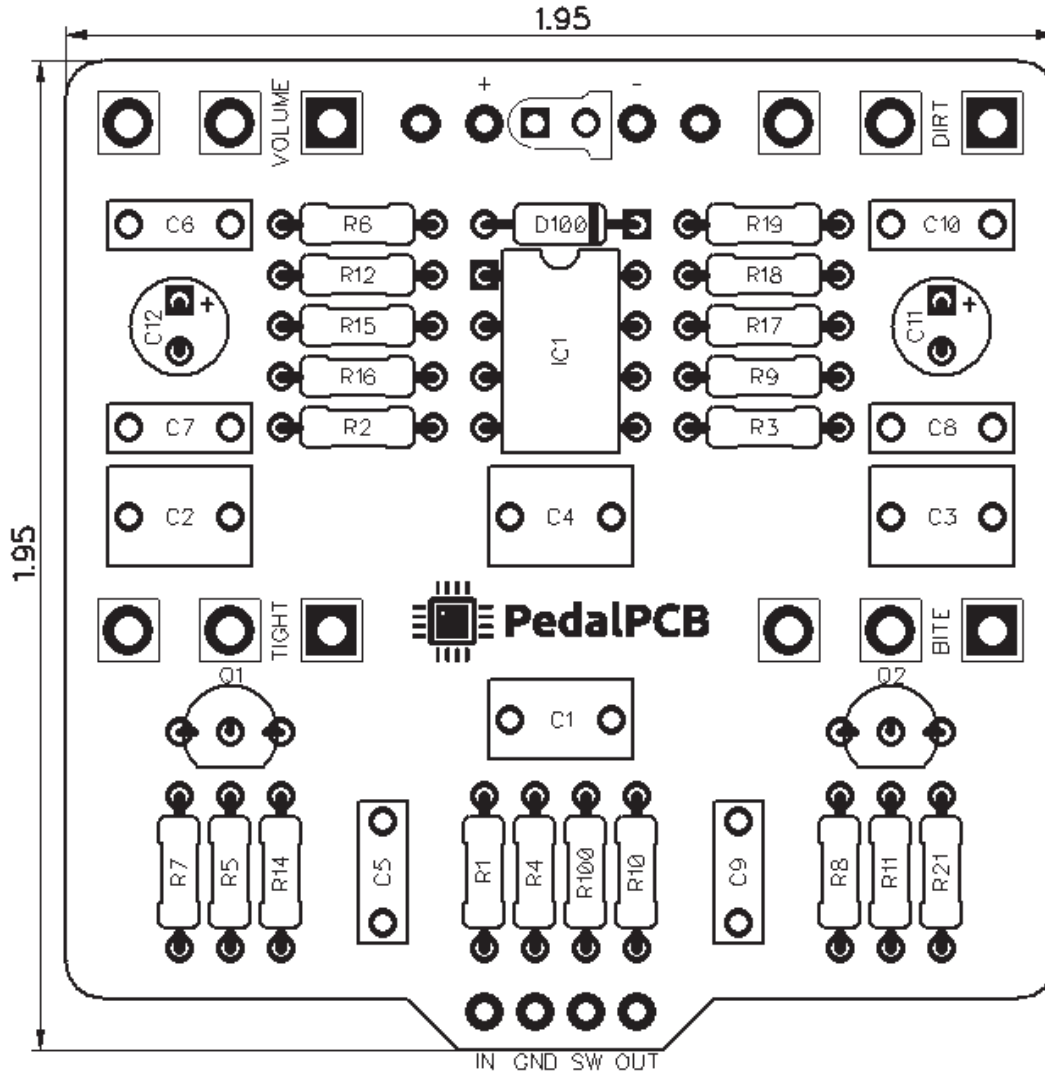




PedalPCB

Wonder Drive

Revision 12.16.18



Controls

- Treble
- Bass
- Level

All trademarks and registered trademarks are the property of their respective owners. The company, product, and service names used in this web site are for identification purposes only. Use of these names, logos, and brands does not imply endorsement.

RESISTORS (1/4W)

R1 1M
R2 1K5
R3 10K
R4 2K2
R5 1K
R6 1K
R7 10K
R8 1K
R9 4K7
R10 10K
R11 510K
R12 1K
R14 510K
R15 2K2
R16 10K
R17 10K
R18 10K
R19 20K
R21 10K
R100 4K7

CAPACITORS

C1 330n
C2 1u (BOX FILM or MLCC)
C3 1u (BOX FILM or MLCC)
C4 1u (BOX FILM or MLCC)
C5 47n
C6 100n
C7 10n
C8 100n
C9 150n
C10 150n
C11 100u
C12 47u

INTEGRATED CIRCUITS

IC1 OPA2604AP

TRANSISTORS

Q1 2N5089
Q2 2N5089

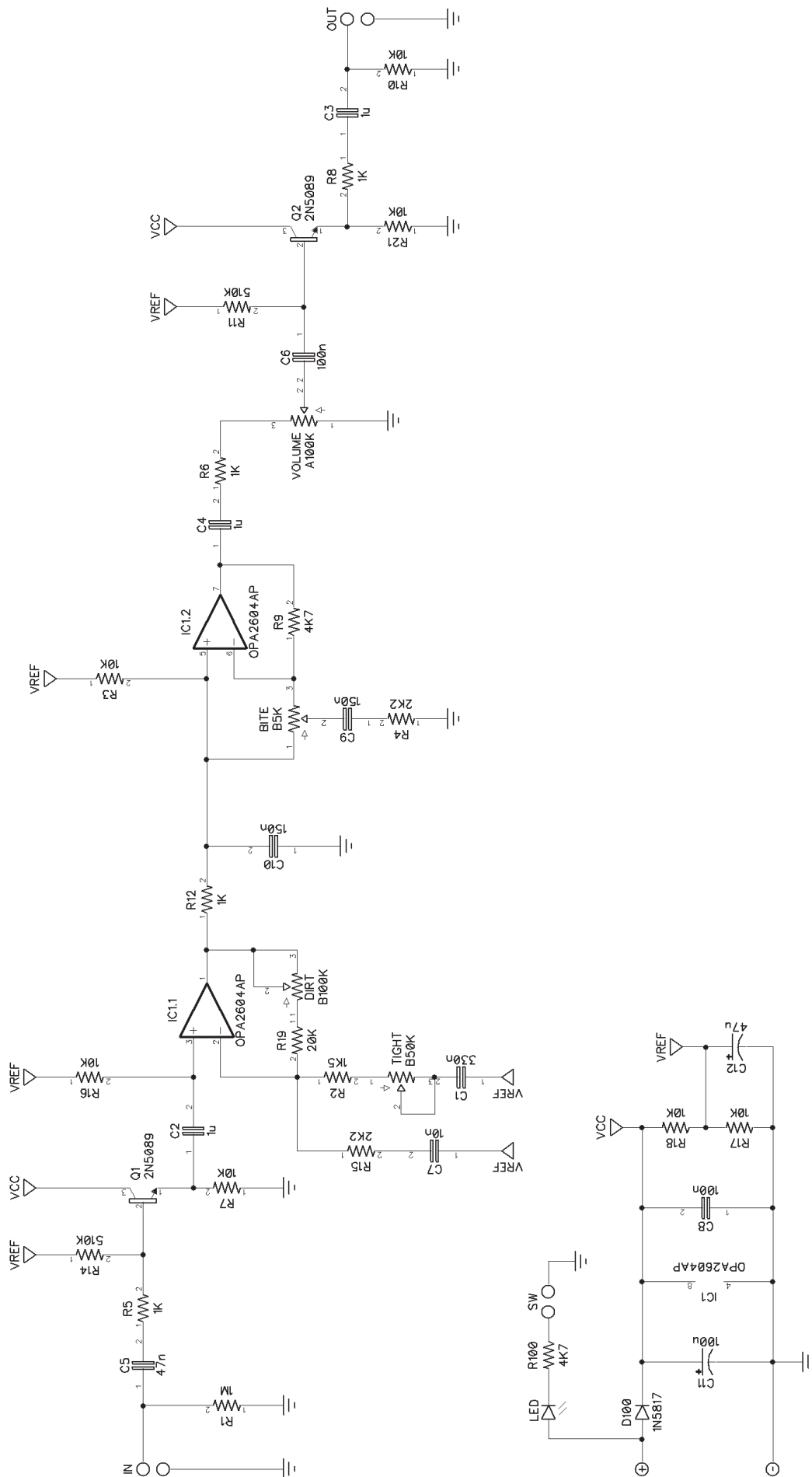
DIODES

D100 1N5817

POTENTIOMETERS

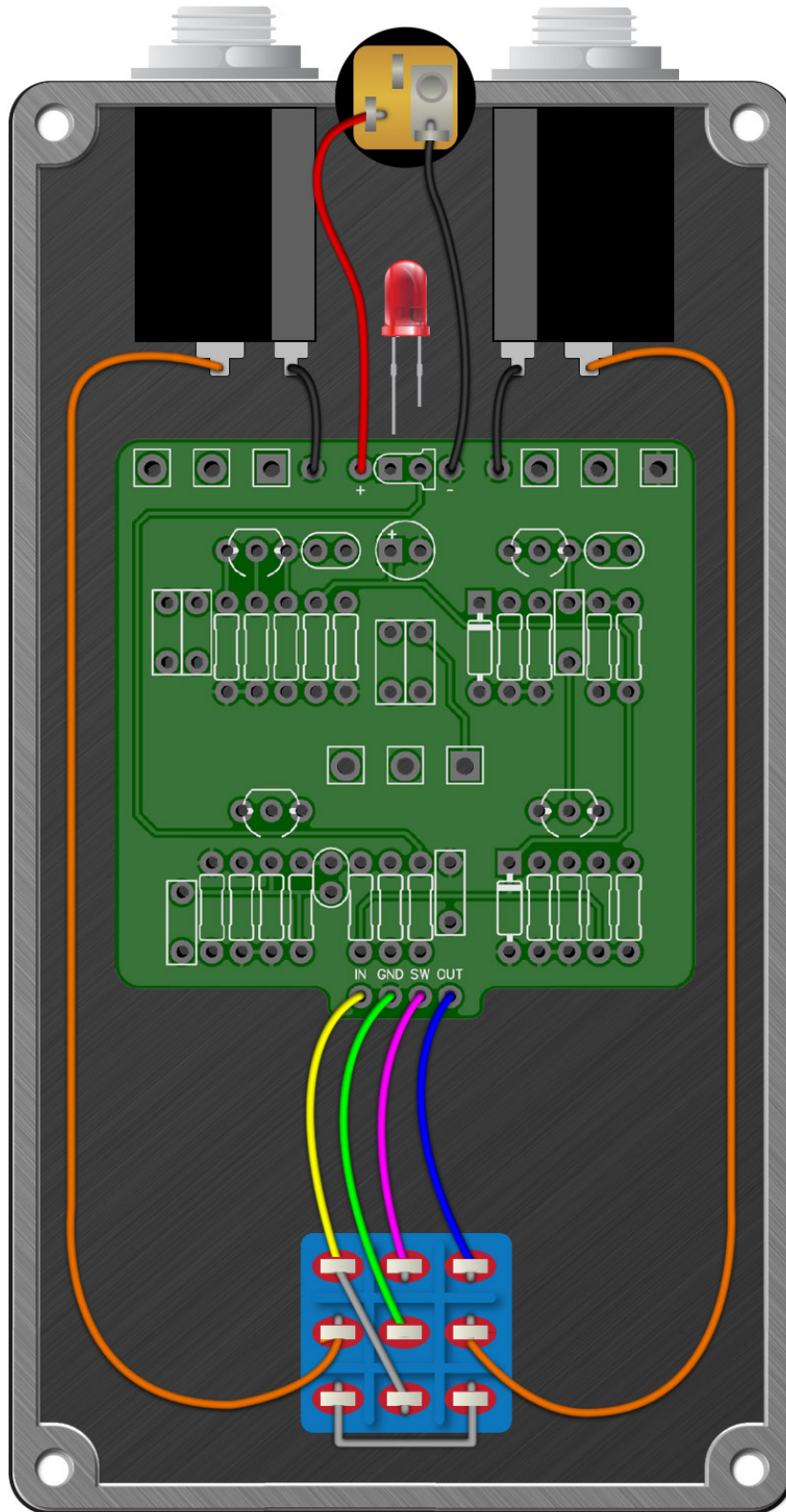
DIRT B100K
BITE B5K
TIGHT B50K
VOLUME A100K

Wonder Drive



Wonder Drive

Wiring Diagram



Wonder Drive

Drill Template
125B enclosure with top mounted jacks

