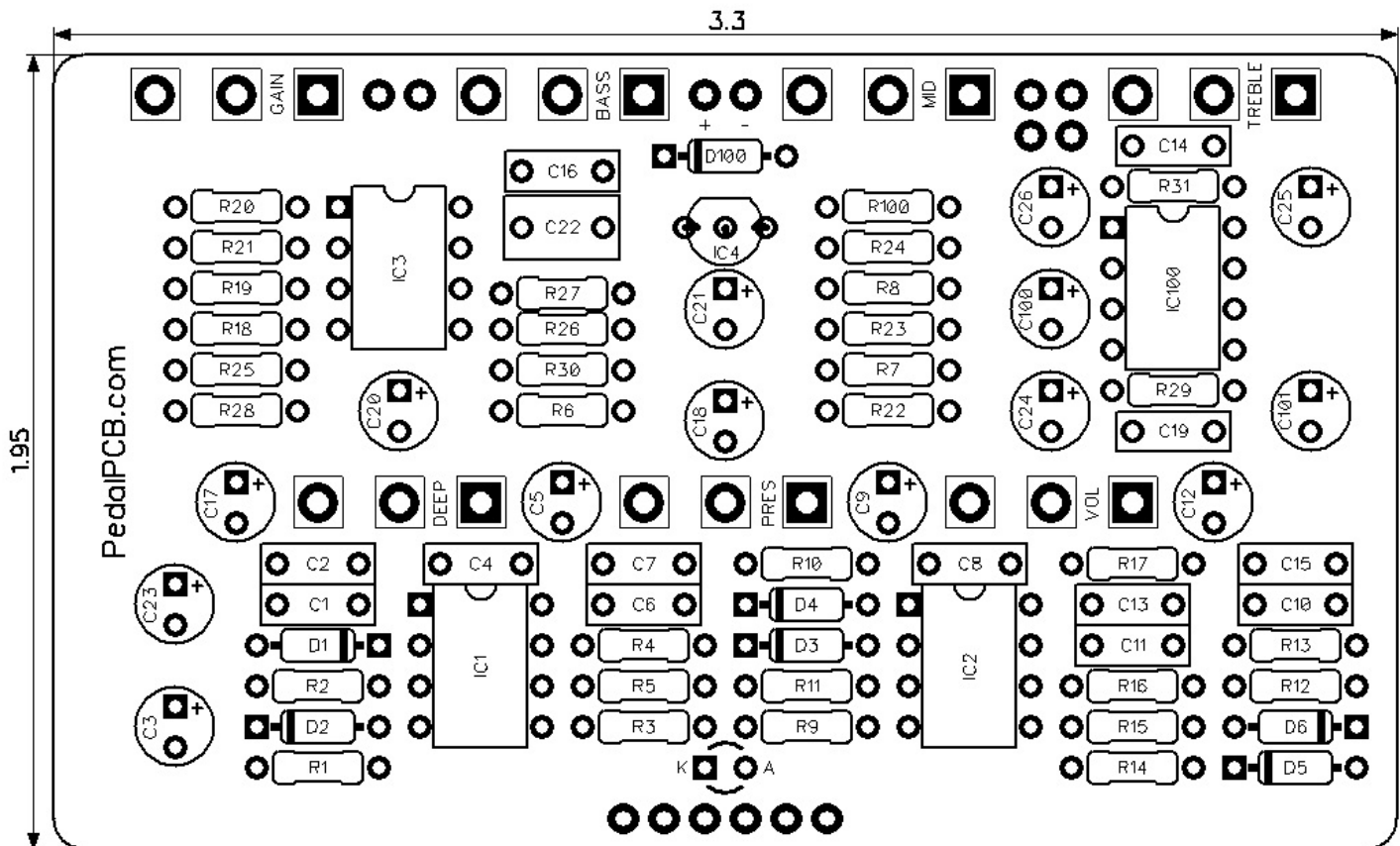


# PedalPCB

## Valhalla Overdrive

Revised 4/9/21

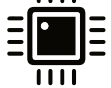


### CONTROLS AND FEATURES

- Treble
- Mid
- Bass
- Gain
- Volume
- Presence
- Deep

*All trademarks and registered trademarks are the property of their respective owners. The company, product, and service names used in this web site are for identification purposes only. Use of these names, logos, and brands does not imply endorsement.*

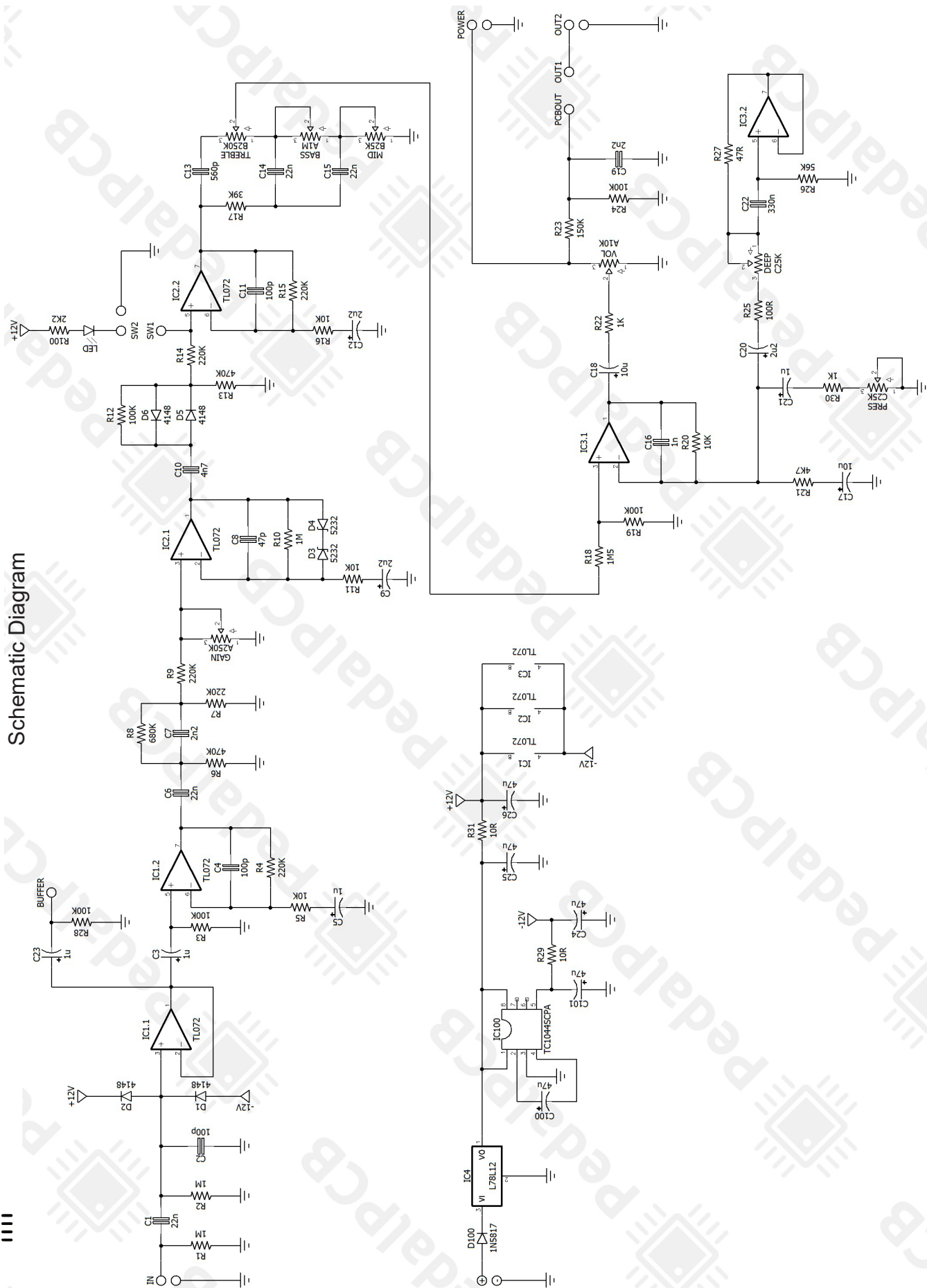
LOCATION	VALUE	TYPE	NOTES
R1	1M	Resistor, 1/4W	
R2	1M	Resistor, 1/4W	
R3	100K	Resistor, 1/4W	
R4	220K	Resistor, 1/4W	
R5	10K	Resistor, 1/4W	
R6	470K	Resistor, 1/4W	
R7	220K	Resistor, 1/4W	
R8	680K	Resistor, 1/4W	
R9	220K	Resistor, 1/4W	
R10	1M	Resistor, 1/4W	
R11	10K	Resistor, 1/4W	
R12	100K	Resistor, 1/4W	
R13	470K	Resistor, 1/4W	
R14	220K	Resistor, 1/4W	
R15	220K	Resistor, 1/4W	
R16	10K	Resistor, 1/4W	
R17	39K	Resistor, 1/4W	
R18	1M5	Resistor, 1/4W	
R19	100K	Resistor, 1/4W	
R20	10K	Resistor, 1/4W	
R21	4K7	Resistor, 1/4W	
R22	1K	Resistor, 1/4W	
R23	150K	Resistor, 1/4W	
R24	100K	Resistor, 1/4W	
R25	100R	Resistor, 1/4W	
R26	56K	Resistor, 1/4W	
R27	47R	Resistor, 1/4W	
R28	100K	Resistor, 1/4W	
R29	10R	Resistor, 1/4W	
R30	1K	Resistor, 1/4W	
R31	10R	Resistor, 1/4W	
R100	2K2	Resistor, 1/4W	
C1	22n	Film capacitor, 7.2 x 2.5mm	
C2	100p	Ceramic capacitor	
C3	1u	Electrolytic capacitor, 5mm	
C4	100p	Ceramic capacitor	
C5	1u	Electrolytic capacitor, 5mm	
C6	22n	Film capacitor, 7.2 x 2.5mm	
C7	2n2	Film capacitor, 7.2 x 2.5mm	
C8	47p	Ceramic capacitor	
C9	2u2	Electrolytic capacitor, 5mm	
C10	4n7	Film capacitor, 7.2 x 2.5mm	
C11	100p	Ceramic capacitor	
C12	2u2	Electrolytic capacitor, 5mm	
C13	560p	Ceramic capacitor	
C14	22n	Film capacitor, 7.2 x 2.5mm	
		<i>Continued on next page...</i>	

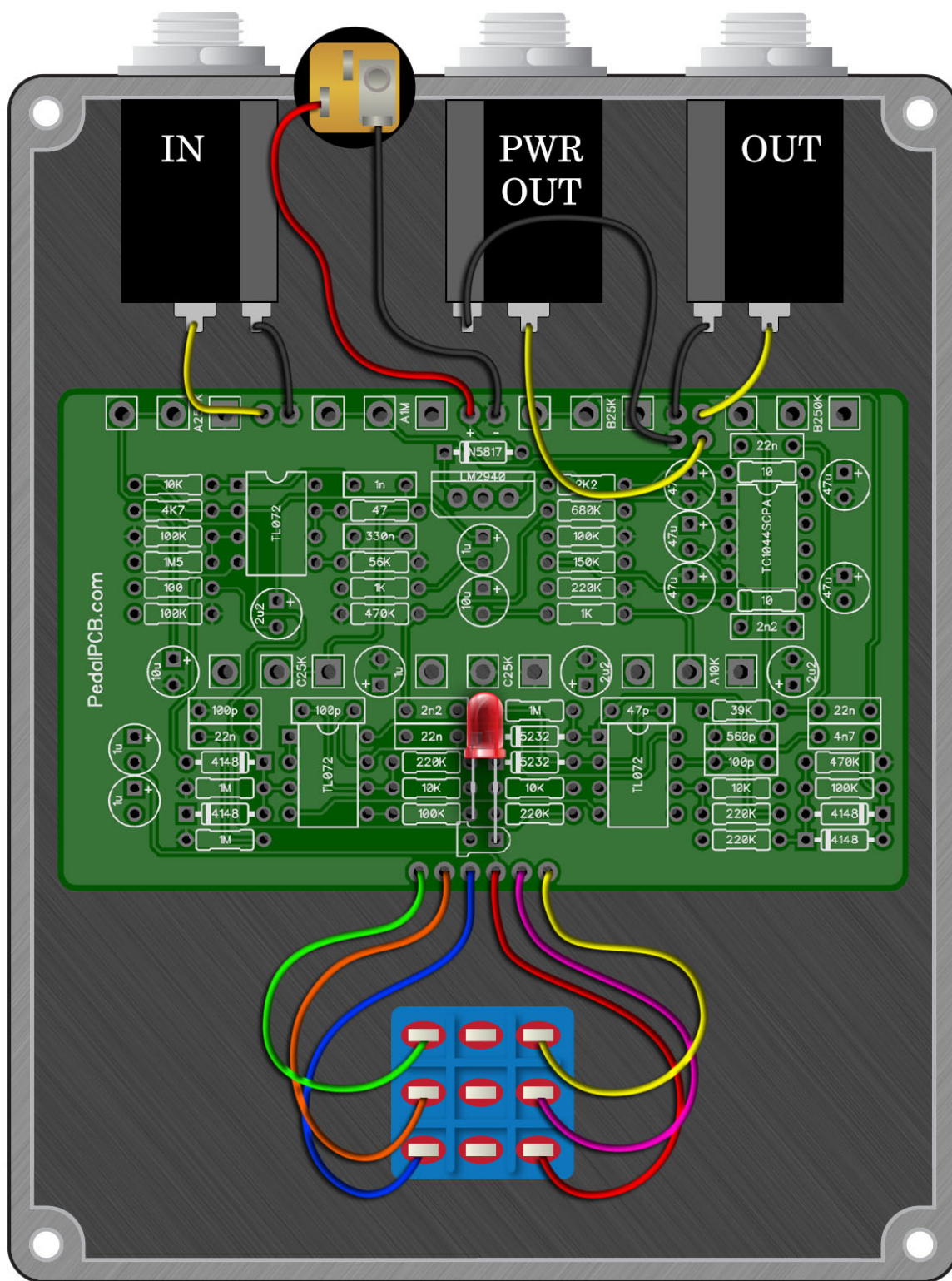


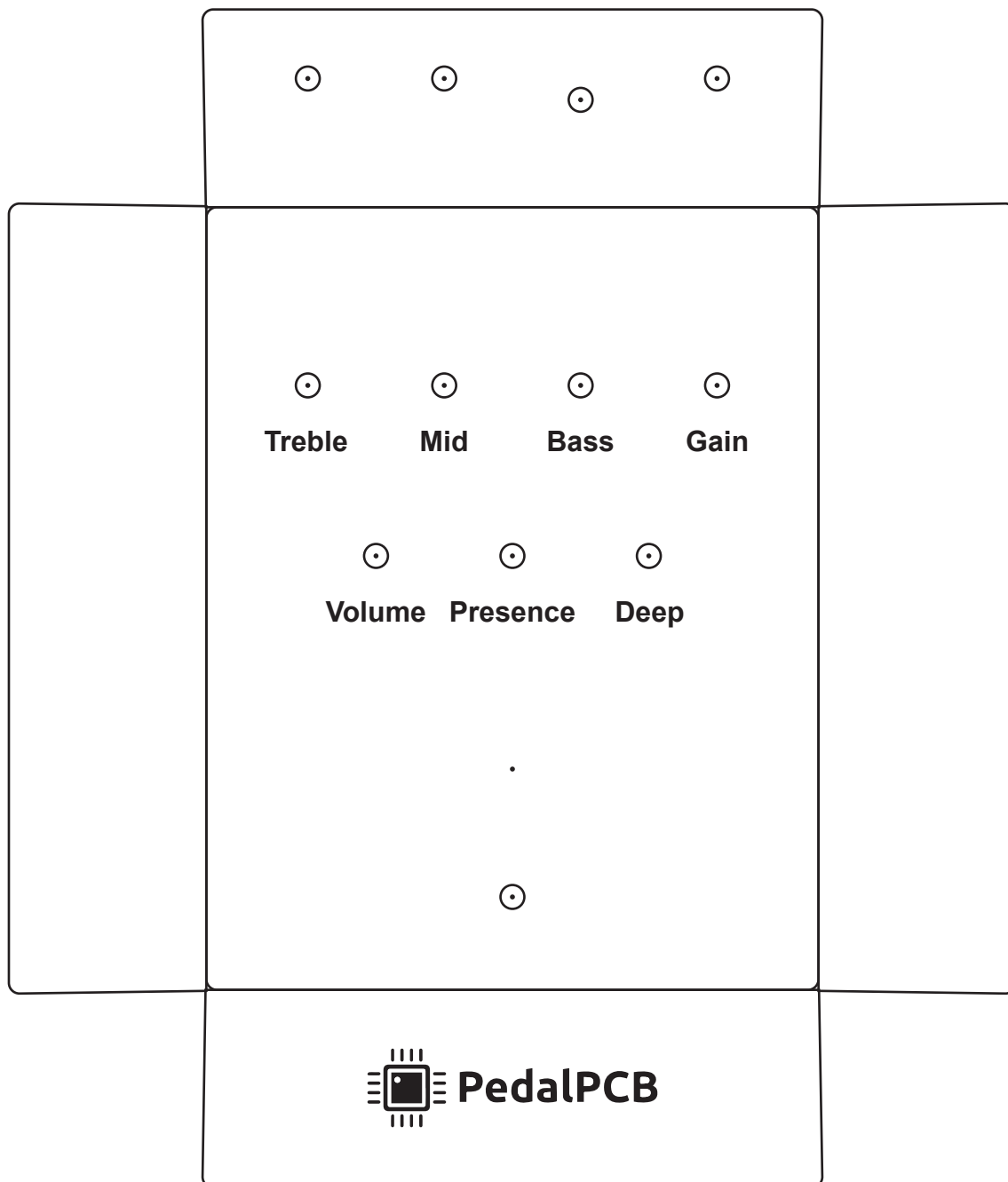
# Valhalla Overdrive

## Parts List (Page 2 of 2)

[illegible]

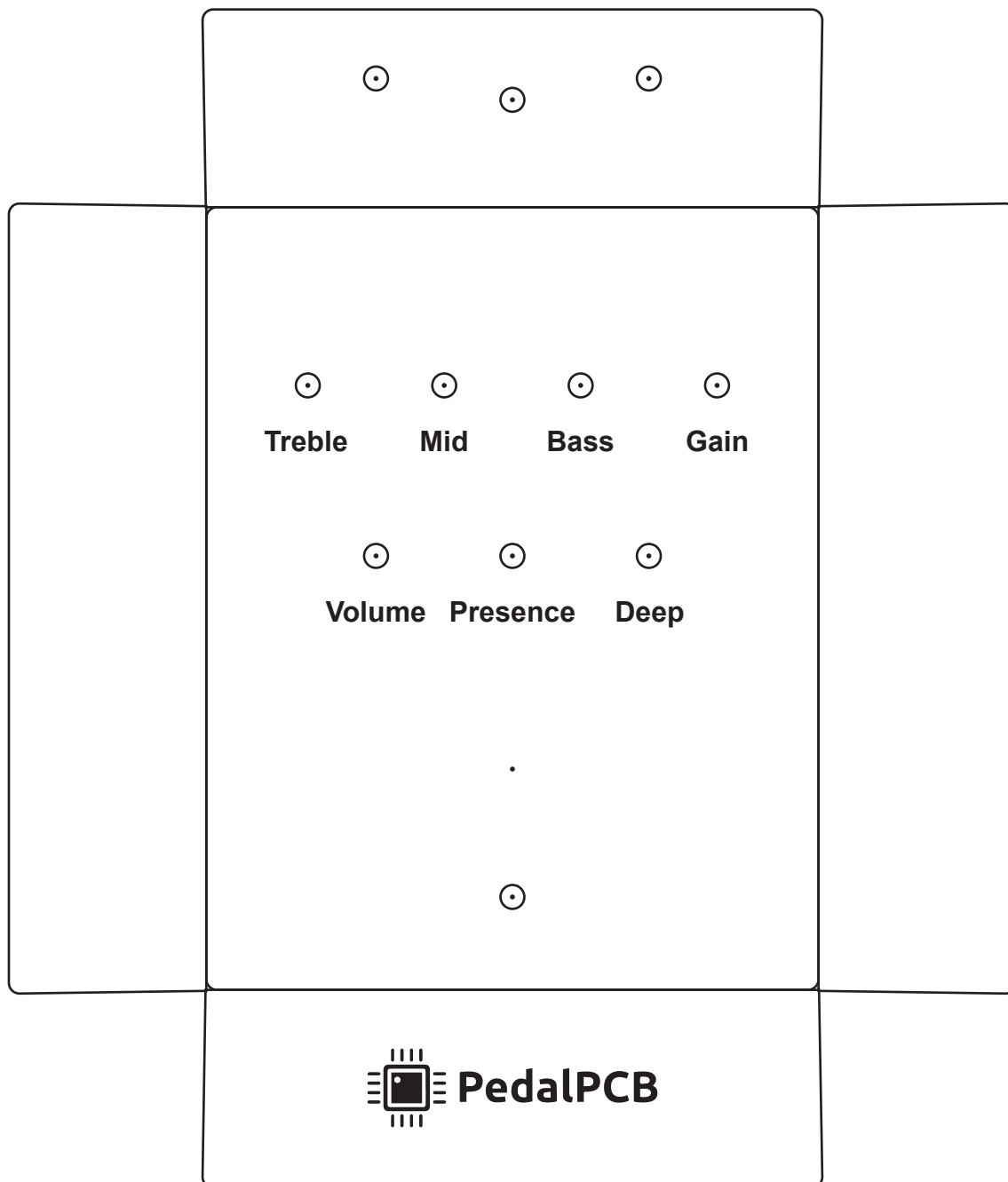






# Valhalla Overdrive

Drill Template  
1590BB Enclosure



**Alternate Version  
(No Power Amp Output Jack)**