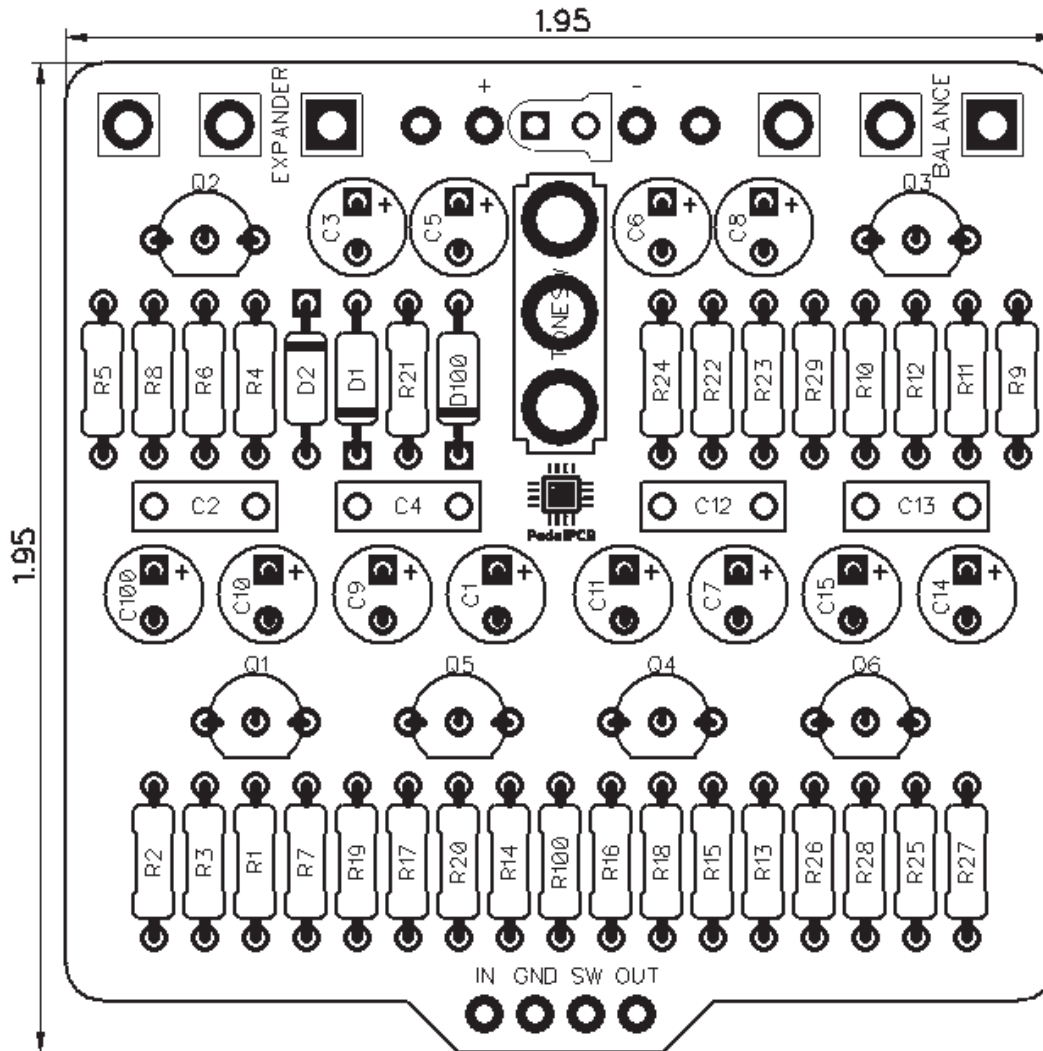




# PedalPCB

## Uberfuzz

Revision 12.16.18



### Controls

- **Expander**
- **Balance**
- **Tone** (Toggle switch)

All trademarks and registered trademarks are the property of their respective owners. The company, product, and service names used in this web site are for identification purposes only. Use of these names, logos, and brands does not imply endorsement.

**RESISTORS (1/4W)**

R1 22K  
R2 100K  
R3 1K8  
R4 47K  
R5 10K  
R6 47K  
R7 100K  
R8 470K  
R9 150K  
R10 10K  
R11 220K  
R12 10K  
R13 470R  
R14 470R  
R15 100K  
R16 22K  
R17 1K8  
R18 10K  
R19 100K  
R20 22K  
R21 10K  
R22 47K  
R23 22K  
R24 10K  
R25 15K  
R26 1K  
R27 100K  
R28 10K  
R29 100K  
R100 4K7

**CAPACITORS**

C1 10u  
C2 1n  
C3 10u  
C4 100n  
C5 10u  
C6 10u  
C7 10u  
C8 10u  
C9 10u  
C10 10u  
C11 10u  
C12 1n  
C13 100n  
C14 10u  
C15 10u  
C100 10u

**SWITCHES**

TONESW SPDT (On / On)

**TRANSISTORS**

Q1 2SC828  
Q2 2SC828  
Q3 2SC828  
Q4 2SC828  
Q5 2SC828  
Q6 2SC828

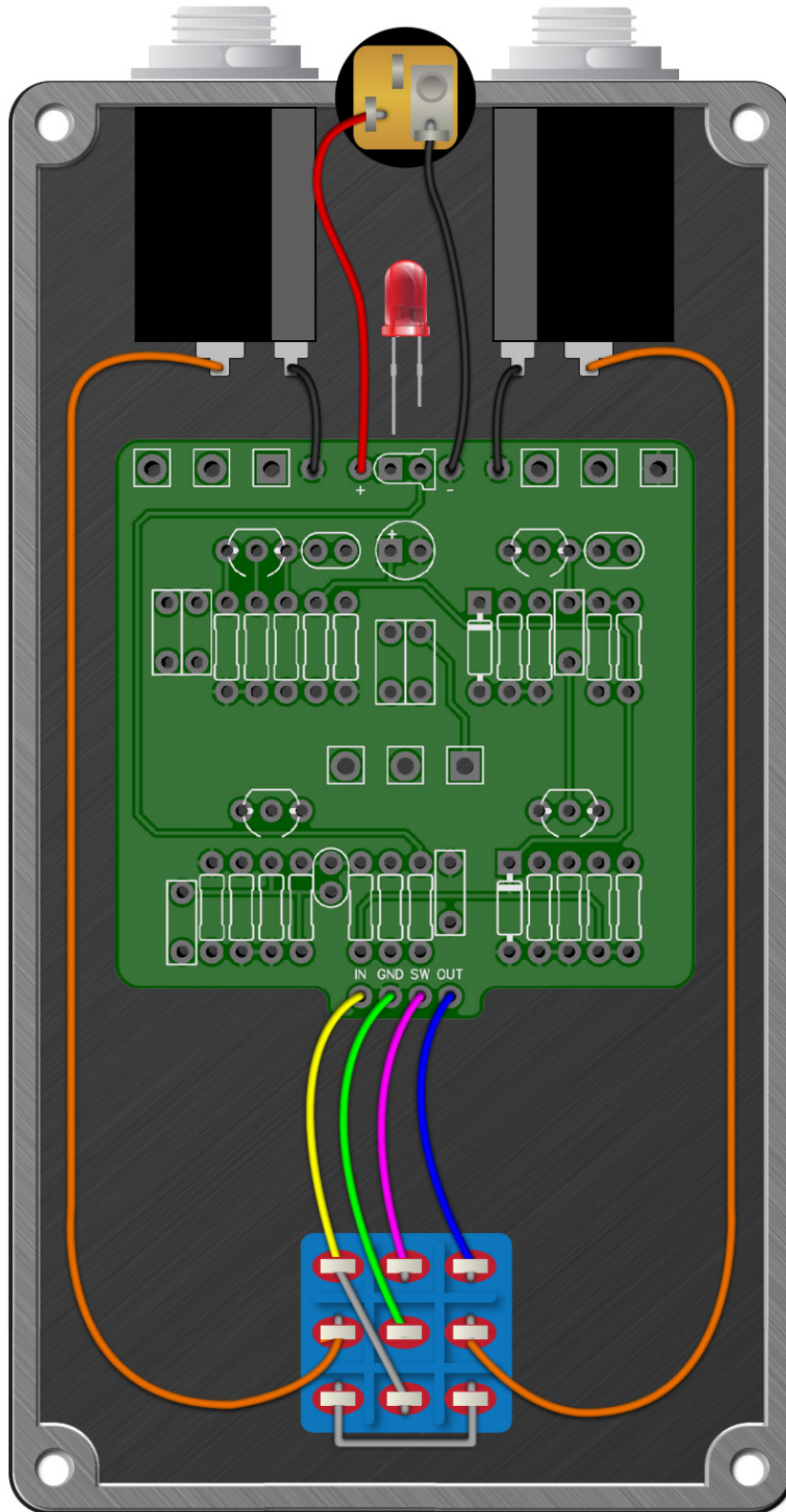
**DIODES**

D1 OA90  
D2 OA90  
D100 1N5817

**POTENTIOMETERS**

BALANCE B50K  
EXPANDER B50K





# Uberfuzz

Drill Template  
125B enclosure with top mounted jacks

