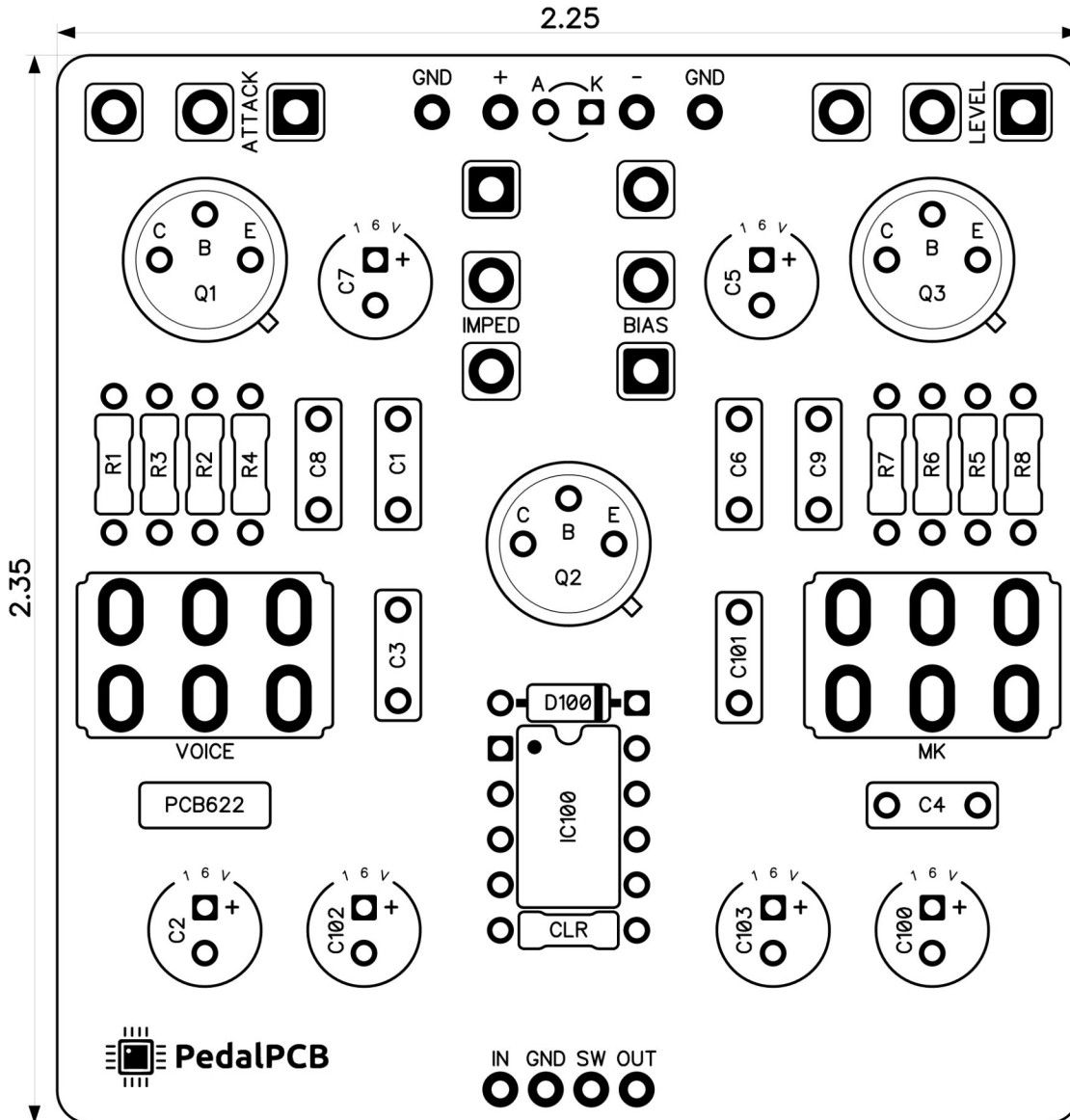


PedalPCB

Two Tone Fuzz

Revised 4/17/24



CONTROLS AND FEATURES

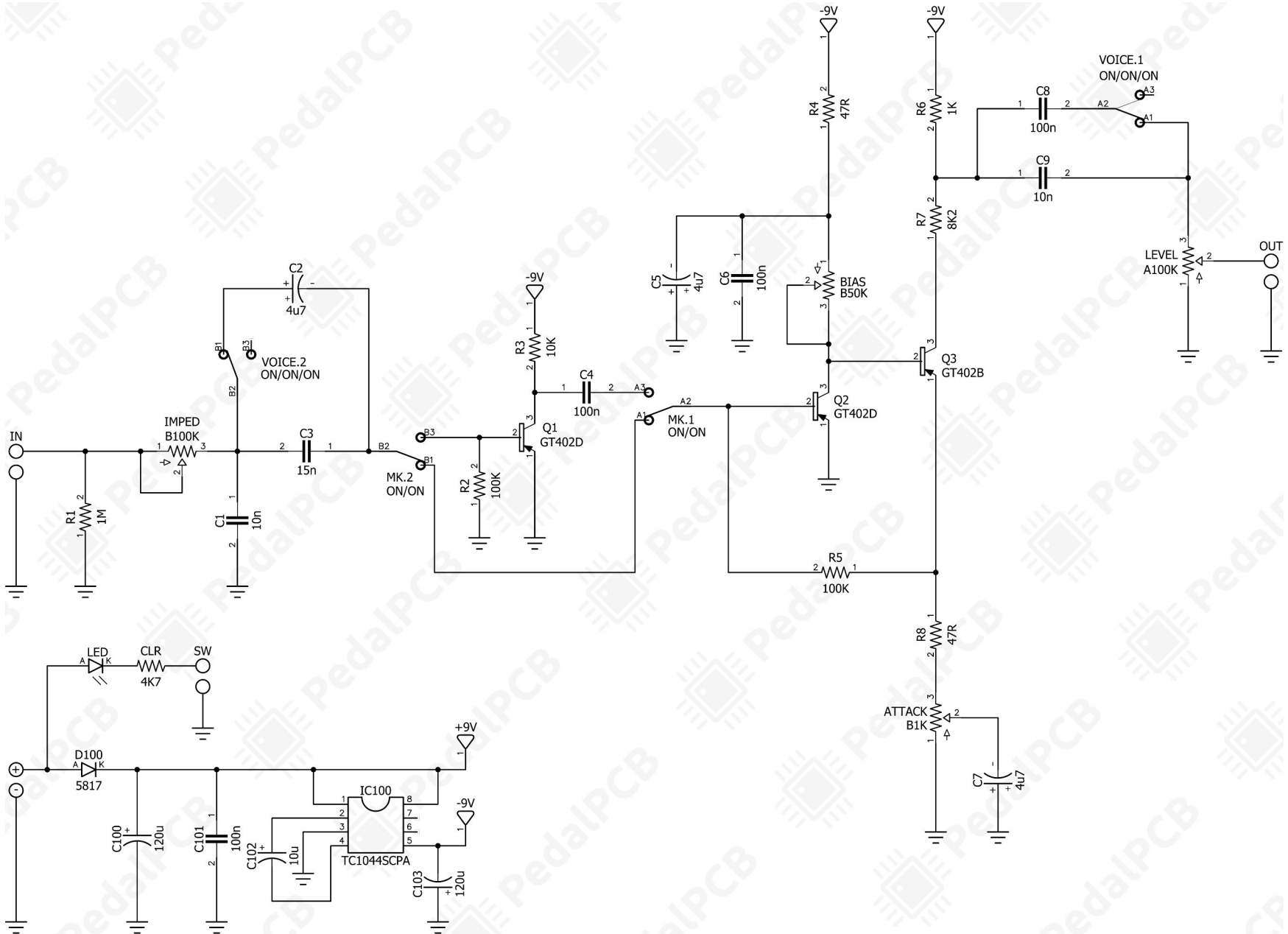
- Level
- Attack
- Bias
- Impedance
- MK I.V / MKII (Toggle switch)
- Voice (Toggle switch)

All trademarks and registered trademarks are the property of their respective owners. The company, product, and service names used in this web site are for identification purposes only. Use of these names, logos, and brands does not imply endorsement.

LOCATION	VALUE	TYPE	NOTES
R1	1M	Resistor, 1/4W	
R2	100K	Resistor, 1/4W	
R3	10K	Resistor, 1/4W	
R4	47R	Resistor, 1/4W	
R5	100K	Resistor, 1/4W	
R6	1K	Resistor, 1/4W	
R7	8K2	Resistor, 1/4W	
R8	47R	Resistor, 1/4W	
CLR	4K7	Resistor, 1/4W	* LED current limiting resistor
C1	10n	Film capacitor, 7.2 x 2.5mm	
C2	4u7	Electrolytic capacitor, 5mm	
C3	15n	Film capacitor, 7.2 x 2.5mm	
C4	100n	Film capacitor, 7.2 x 2.5mm	
C5	4u7	Electrolytic capacitor, 5mm	
C6	100n	Film capacitor, 7.2 x 2.5mm	
C7	4u7	Electrolytic capacitor, 5mm	
C8	100n	Film capacitor, 7.2 x 2.5mm	
C9	10n	Film capacitor, 7.2 x 2.5mm	
C100	120u	Electrolytic capacitor, 5mm	
C101	100n	Film capacitor, 7.2 x 5.0mm	
C102	10u	Electrolytic capacitor, 5mm	
C103	120u	Electrolytic capacitor, 5mm	
D100	1N5817	Schottky diode, DO-41	
IC100	TC1044SCPA	Charge pump IC, DIP8	
Q1	GT402D	Germanium BJT transistor, PNP	
Q2	GT402D	Germanium BJT transistor, PNP	
Q3	GT402B	Germanium BJT transistor, PNP	
LEVEL	A100K	16mm right-angle PCB mount pot	
ATTACK	B1K	16mm right-angle PCB mount pot	
BIAS	B50K	16mm right-angle PCB mount pot	
IMPED	B100K	16mm right-angle PCB mount pot	
MK	ON/ON	Toggle switch, DPDT	2-position (ON/ON)
VOICE	ON/ON/ON	Toggle switch, DPDT	3-position (ON/ON/ON) Type 2

Two Tone Fuzz

Schematic Diagram



Two Tone Fuzz

Wiring Diagram



Two Tone Fuzz

Drill Template
125B Enclosure

