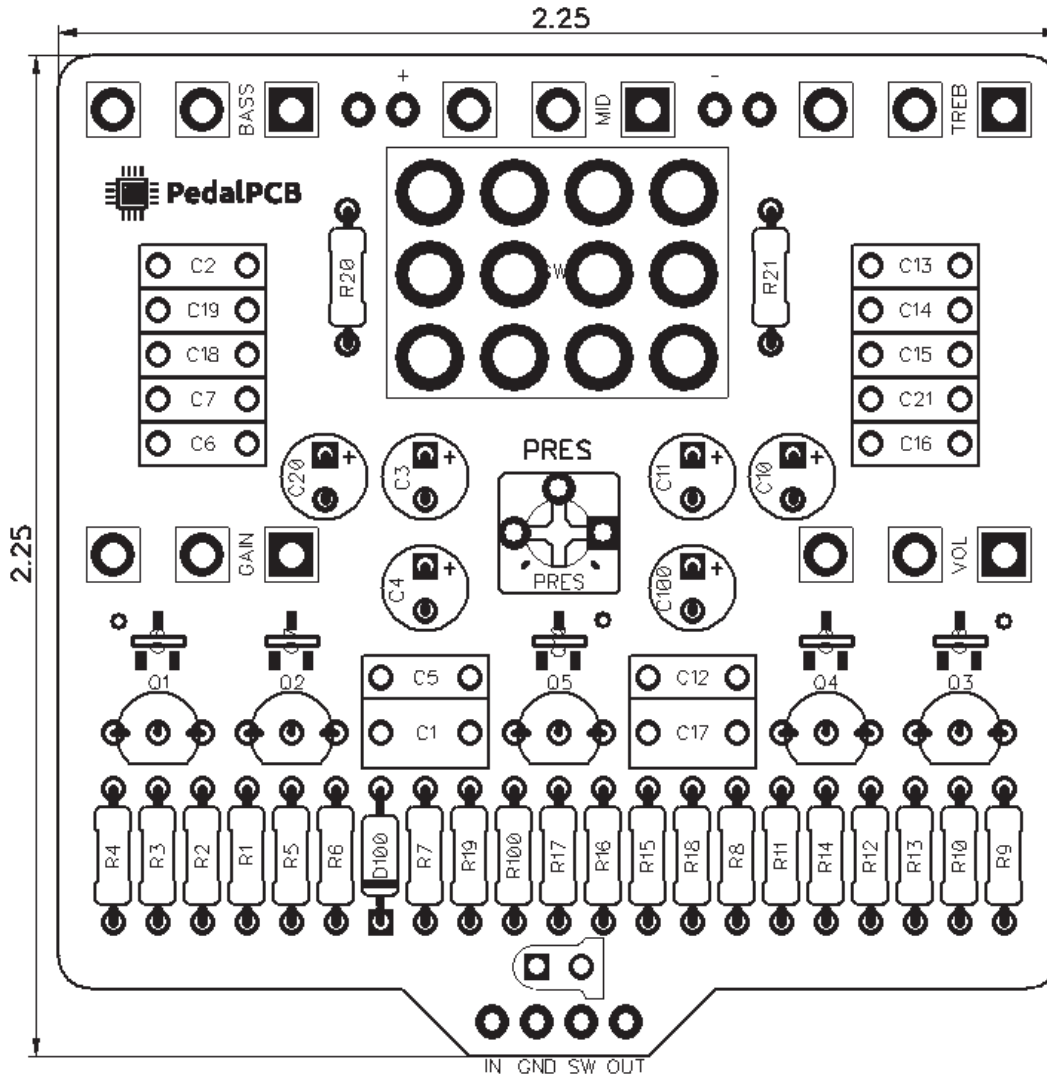


# PedalPCB

## Tweed Man Overdrive

Revision 12.16.18



### Controls

- **Volume**
- **Preamp**
- **Treble**
- **Mid**
- **Bass**
- **Presence** (Trim pot)
- **Voice** (Toggle switch)

All trademarks and registered trademarks are the property of their respective owners. The company, product, and service names used in this web site are for identification purposes only. Use of these names, logos, and brands does not imply endorsement.

# Tweed Man Overdrive

## Parts List

### RESISTORS (1/4W)

R1	680K
R2	33K
R3	1K
R4	1K
R5	1M
R6	1M
R7	47K
R8	220K
R9	220K
R10	1K8
R11	1K
R12	1M
R13	1M
R14	33K
R15	100K
R16	1K
R17	4K7
R18	2M2
R19	2M2
R20	470K
R21	56K
R100	4K7

### CAPACITORS

C1	220n
C2	1n
C3	4u7
C4	1u
C5	220p
C6	22n
C7	100p
C10	1u
C11	1u
C12	220p
C13	470p
C14	22n
C15	22n
C16	22n
C17	220n
C18	10n
C19	4n7
C20	22u
C21	220p
C100	22u

### SWITCHES

SW1	4PDT Toggle
-----	-------------

### TRANSISTORS

*Choose between Through-Hole or SMD*

#### Through-Hole

Q1	MPF4393
Q2	MPF4393
Q3	MPF4393
Q4	MPF4393
Q5	MPF4393

#### SMD

Q6	MMBF4393
Q7	MMBF4393
Q8	MMBF4393
Q9	MMBF4393
Q10	MMBF4393

### DIODES

D100	1N5817
------	--------

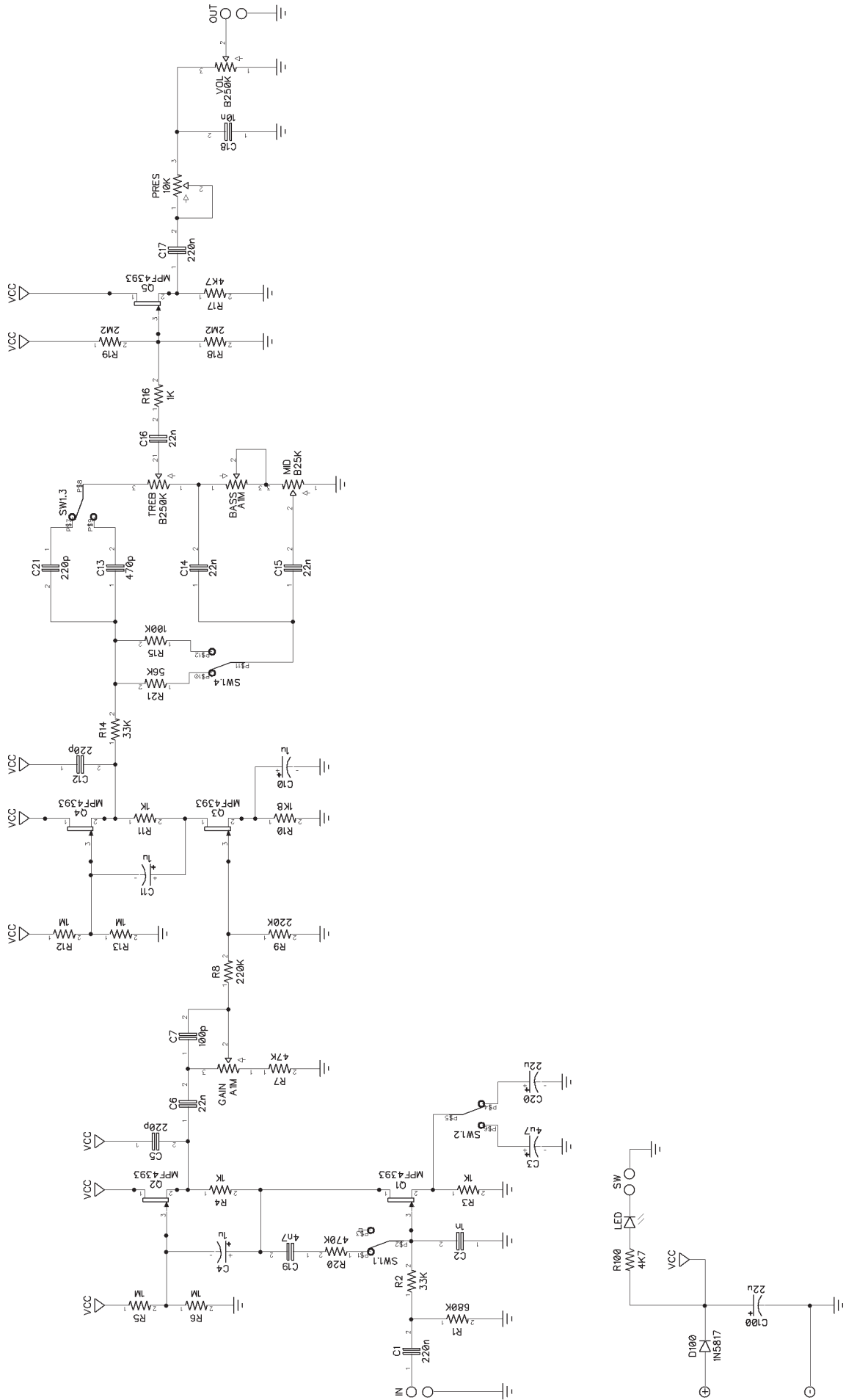
### POTENTIOMETERS

VOL	B250K
GAIN	A1M
TREB	B250K
MID	B25K
BASS	A1M

### TRIM POTS (3362P)

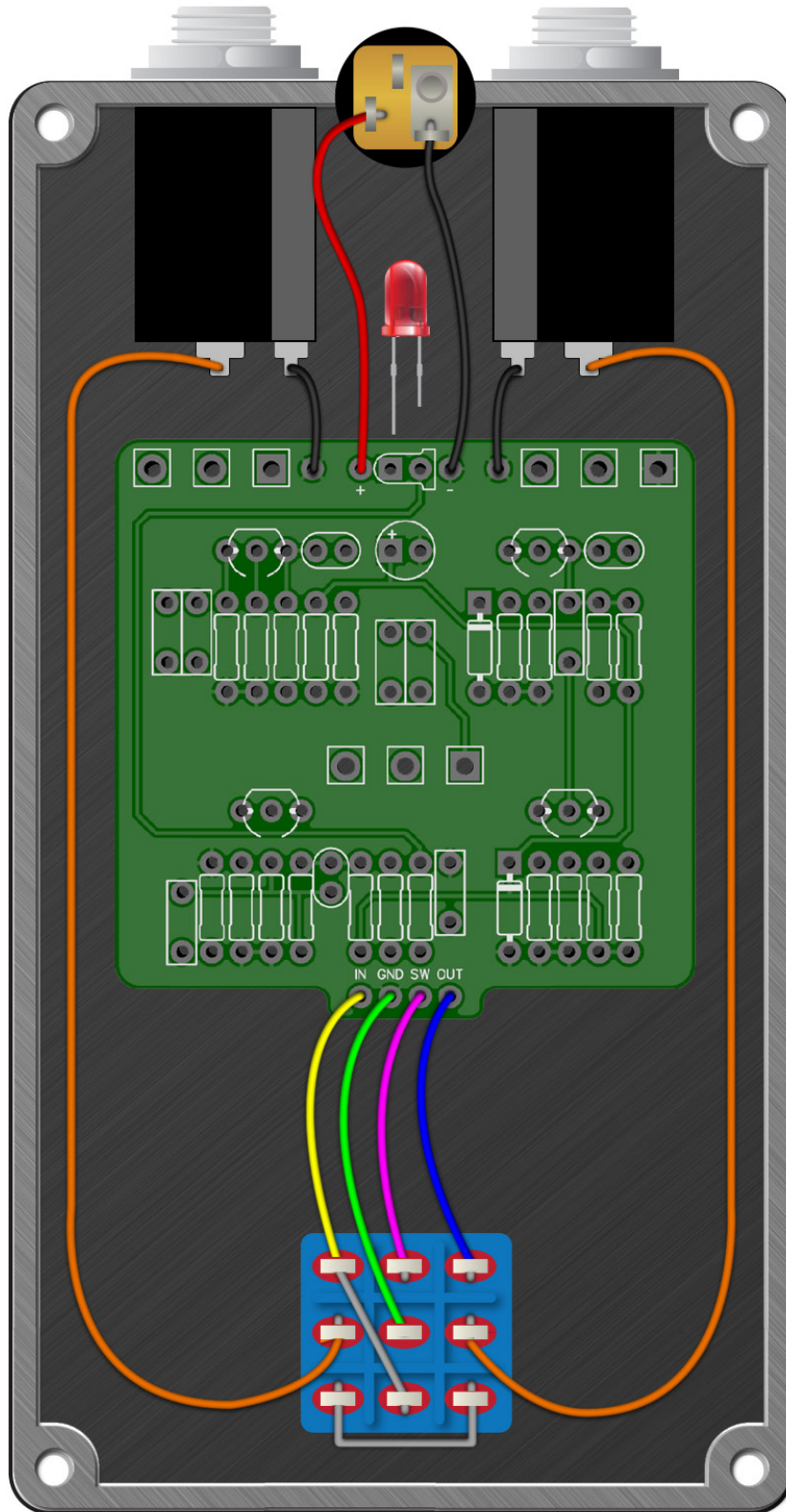
PRES	10K
------	-----

# Tweed Man Overdrive



# Tweed Man Overdrive

Wiring Diagram



# Tweed Man Overdrive

Drill Template

125B enclosure with top mounted jacks

