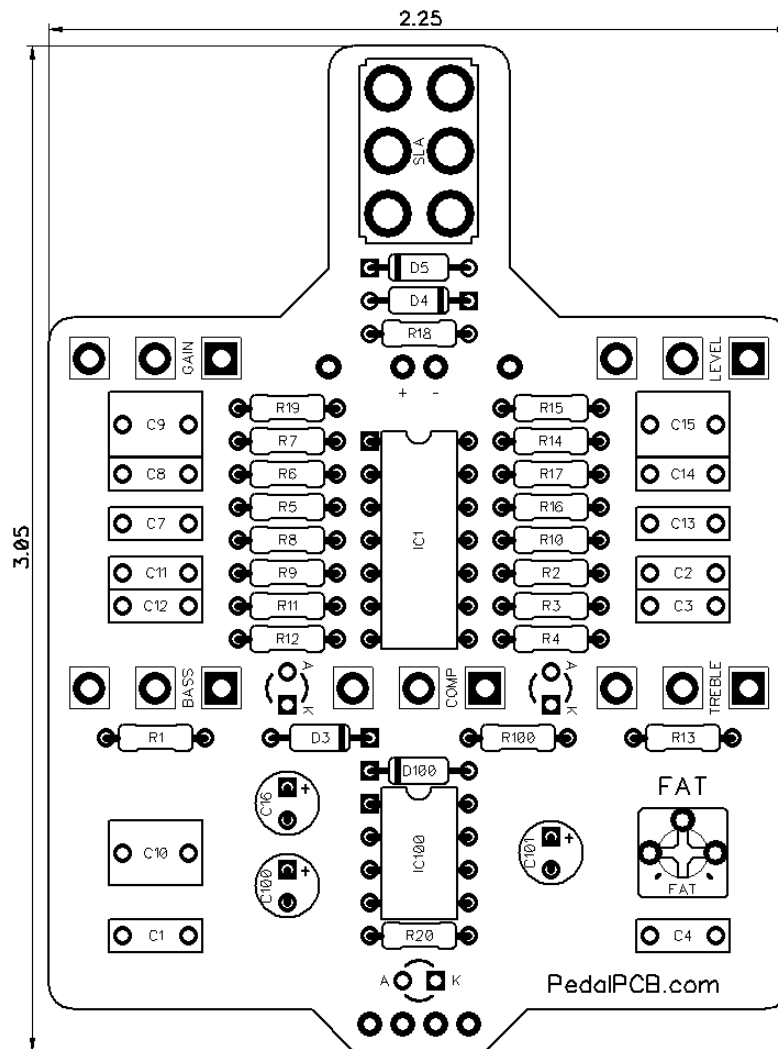


PedalPCB

Trojan Horse Overdrive

Revision 12.23.19



Controls

- **Gain**
- **Compression**
- **Treble**
- **Bass**
- **Level**
- **Fat (Trim Pot)**
- **Clipping (Toggle Switch) - Germanium / LEDs / Asymmetrical**

All trademarks and registered trademarks are the property of their respective owners. The company, product, and service names used in this web site are for identification purposes only. Use of these names, logos, and brands does not imply endorsement.

Trojan Horse Overdrive

Parts List

RESISTORS (1/4W)

R1	1K
R2	1M
R3	22K
R4	470R
R5	100K
R6	47K
R7	4K7
R8	100R
R9	22K
R10	10K
R11	22K
R12	22K
R13	10K
R14	100K
R15	1K
R16	1M
R17	100K
R18	100K
R19	22K
R20	1M
R100	4K7

CAPACITORS

C1	220n
C2	1n
C3	220p
C4	220n
C7	220n
C8	220p
C9	1u
C10	1u
C11	2n7
C12	2n7
C13	220n
C14	220p
C15	1u
C16	47u
C100	10u
C101	47u

INTEGRATED CIRCUITS

IC1	TLE2074
IC100	TC1044SCPA

DIODES

D1	3mm Red LED
D2	3mm Red LED
D3	1N914
D4	1N34A
D5	1N34A
D100	1N5817

POTENTIOMETERS

GAIN	C250K
COMP	C10K
TREBLE	B50K
BASS	B50K
LEVEL	A50K

SWITCHES

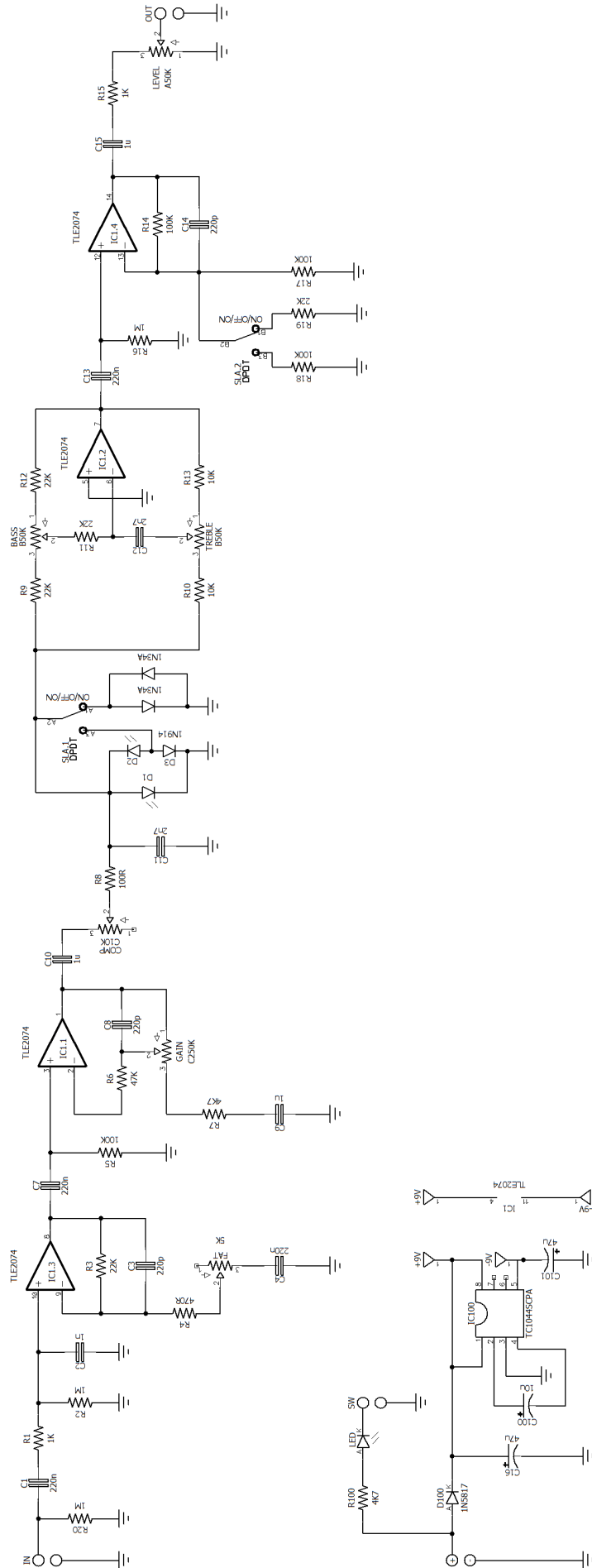
SLA	ON/OFF/ON
-----	-----------

TRIM POTS (3362P style)

FAT	5K
-----	----

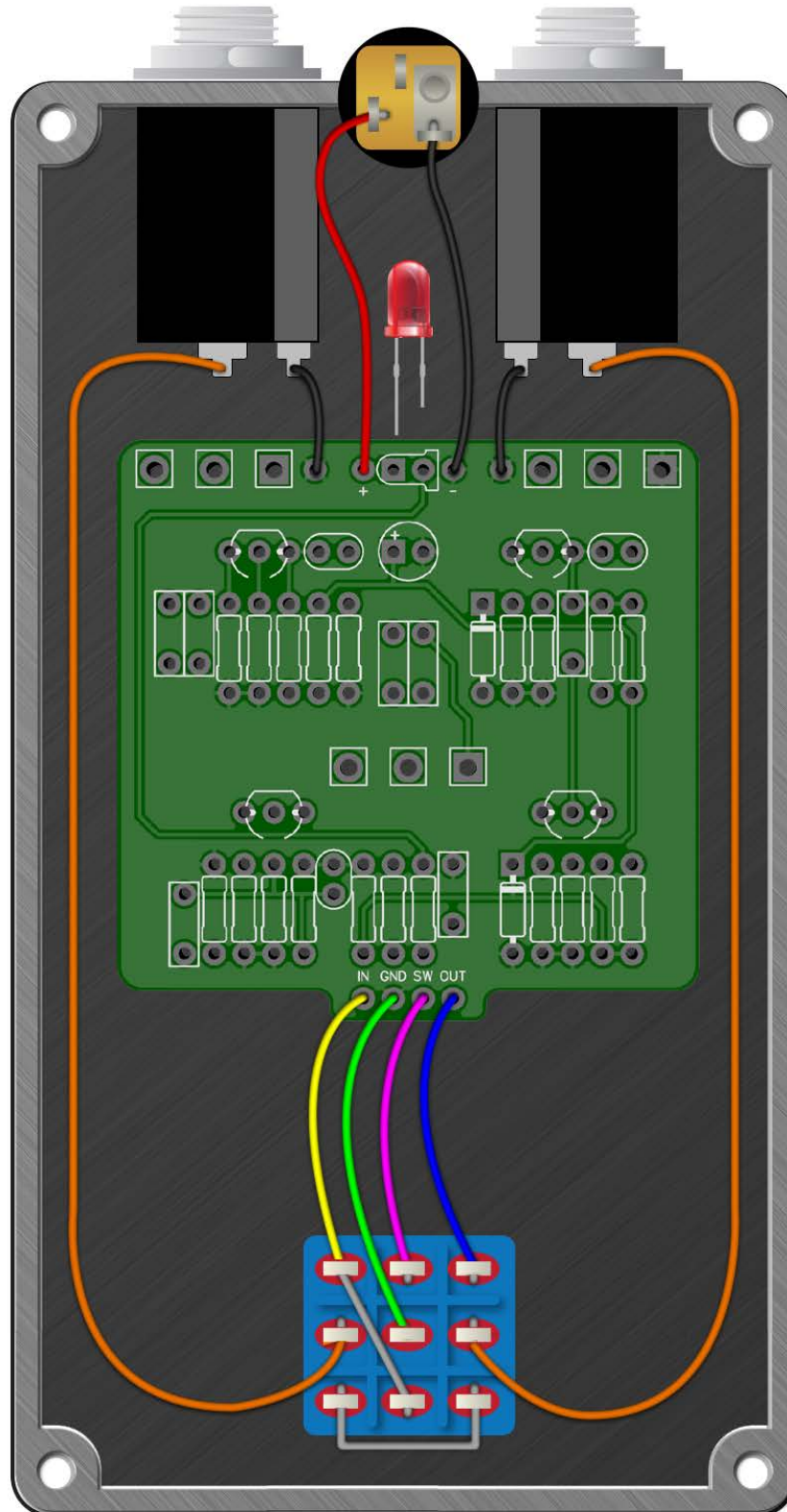
NOTE: Ensure proper orientation of D3 (see Page 1)

Trojan Horse Overdrive



Trojan Horse Overdrive

Wiring Diagram



Trojan Horse Overdrive

Drill Template
125B Enclosure

