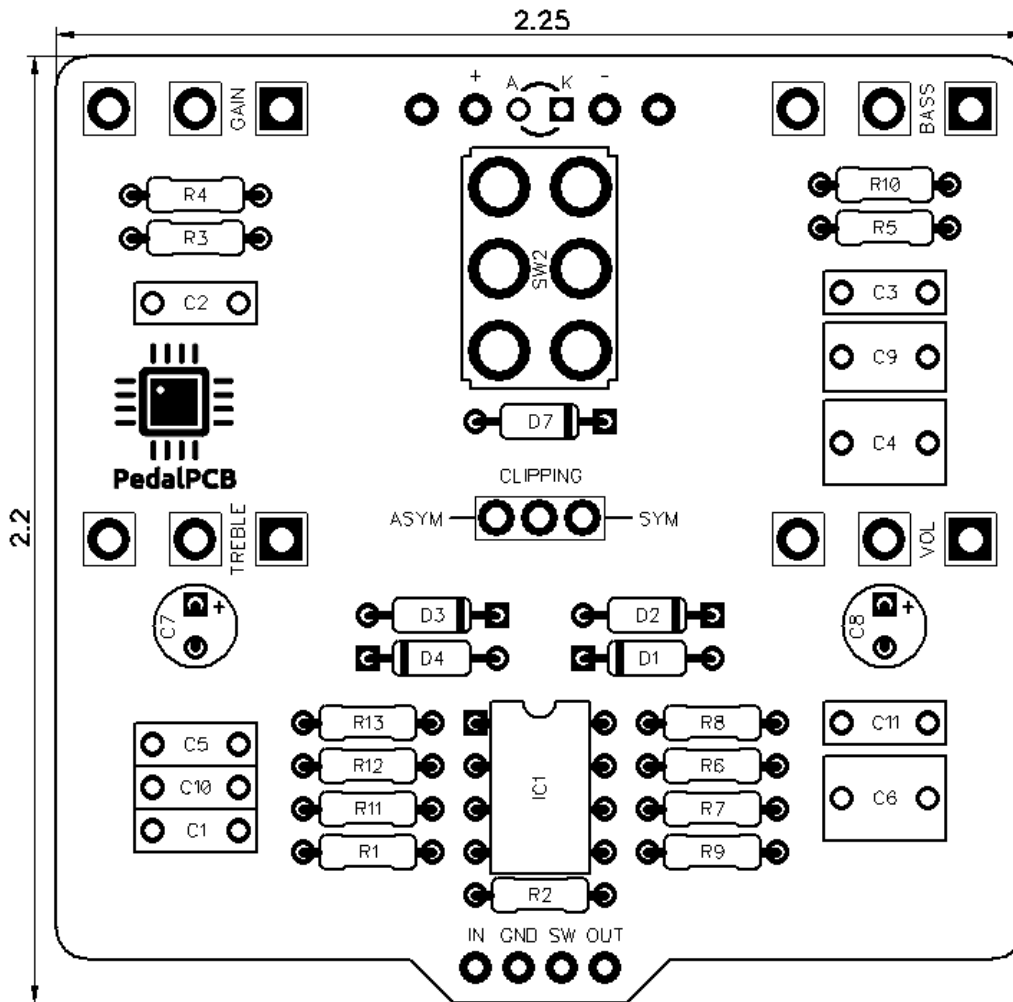




# PedalPCB

## Tommy III

Revision 06.23.20



### Controls

- Volume
- Gain
- Bass
- Treble
- Gain Range (Toggle Switch)
- Clipping Mode (Internal Switch)

All trademarks and registered trademarks are the property of their respective owners. The company, product, and service names used in this web site are for identification purposes only. Use of these names, logos, and brands does not imply endorsement.

**RESISTORS (1/4W)**

R1 1M  
R2 1M  
R3 3K3  
R4 3K3  
R5 18K  
R6 3K3  
R7 3K3  
R8 8K2  
R9 10K  
R10 4K7  
R11 2K2  
R12 360R  
R13 2K2

**CAPACITORS**

C1 39n  
C2 100p  
C3 39n  
C4 820n  
C5 6n8  
C6 820n  
C7 47u  
C8 47u  
C9 220n  
C10 100p  
C11 6n8

**INTEGRATED CIRCUITS**

IC1 LM1458N

**DIODES**

D1 1N4148  
D2 1N4148  
D3 1N4148  
D4 1N4148  
D7 1N5817

**POTENTIOMETERS**

VOL A25K  
GAIN A500K  
BASS C50K  
TREBLE C50K

**SWITCHES**

SW1 SPDT Mini Slide (ESP1010)  
SW2 DPDT (On/On)

# Tommy III

