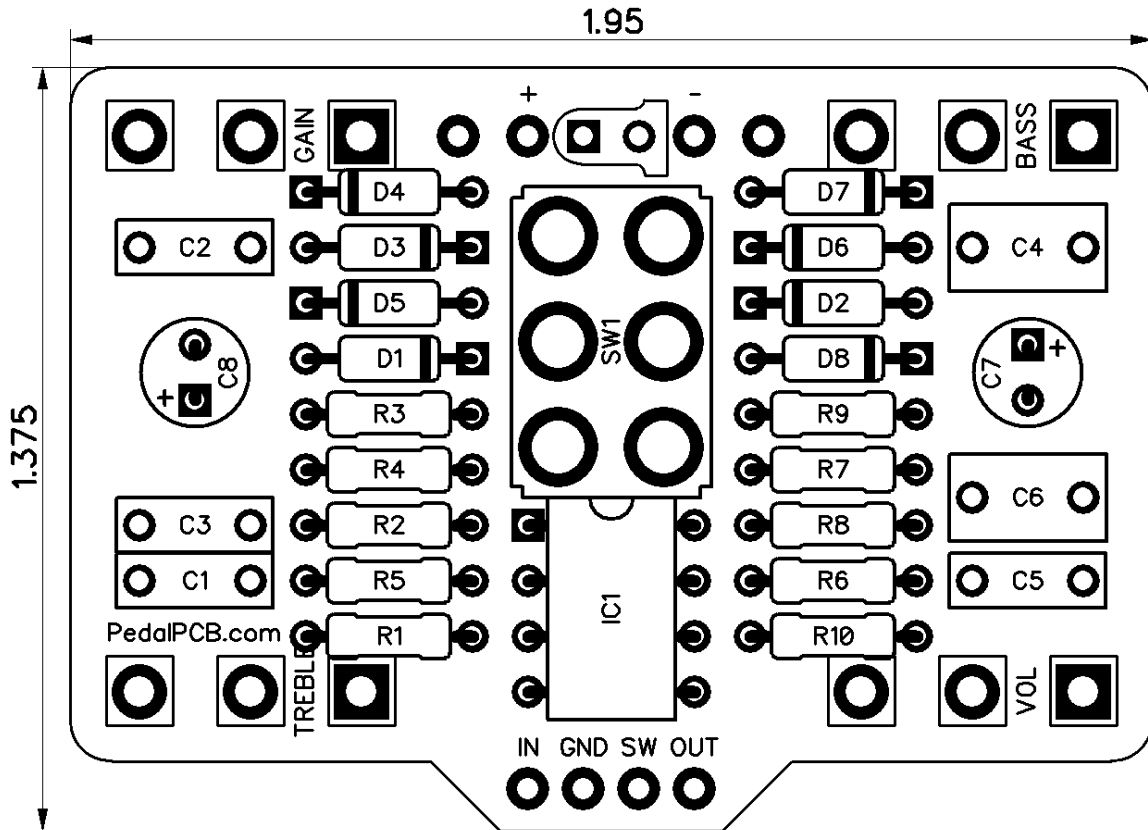


PedalPCB.com

# Tommy Overdrive

Revision 11.04.17



### Resistors

R1	2M2
R2	510K
R3	3K3
R4	3K3
R5	1K5
R6	3K3
R7	3K3
R8	8K2
R9	10K
R10	4K7

### Capacitors

C1	47nF
C2	100pF
C3	39nF
C4	1uF
C5	10nF
C6	1uF
C7	47uF
C8	47uF

### Semiconductors

IC1	JRC4559
D1	1N4148
D2	1N4148
D3	1N4148
D4	1N4148
D5	1N4148
D6	1N4148
D7	1N5817
D8	1N4148
LED	3mm Red

### Potentiometers

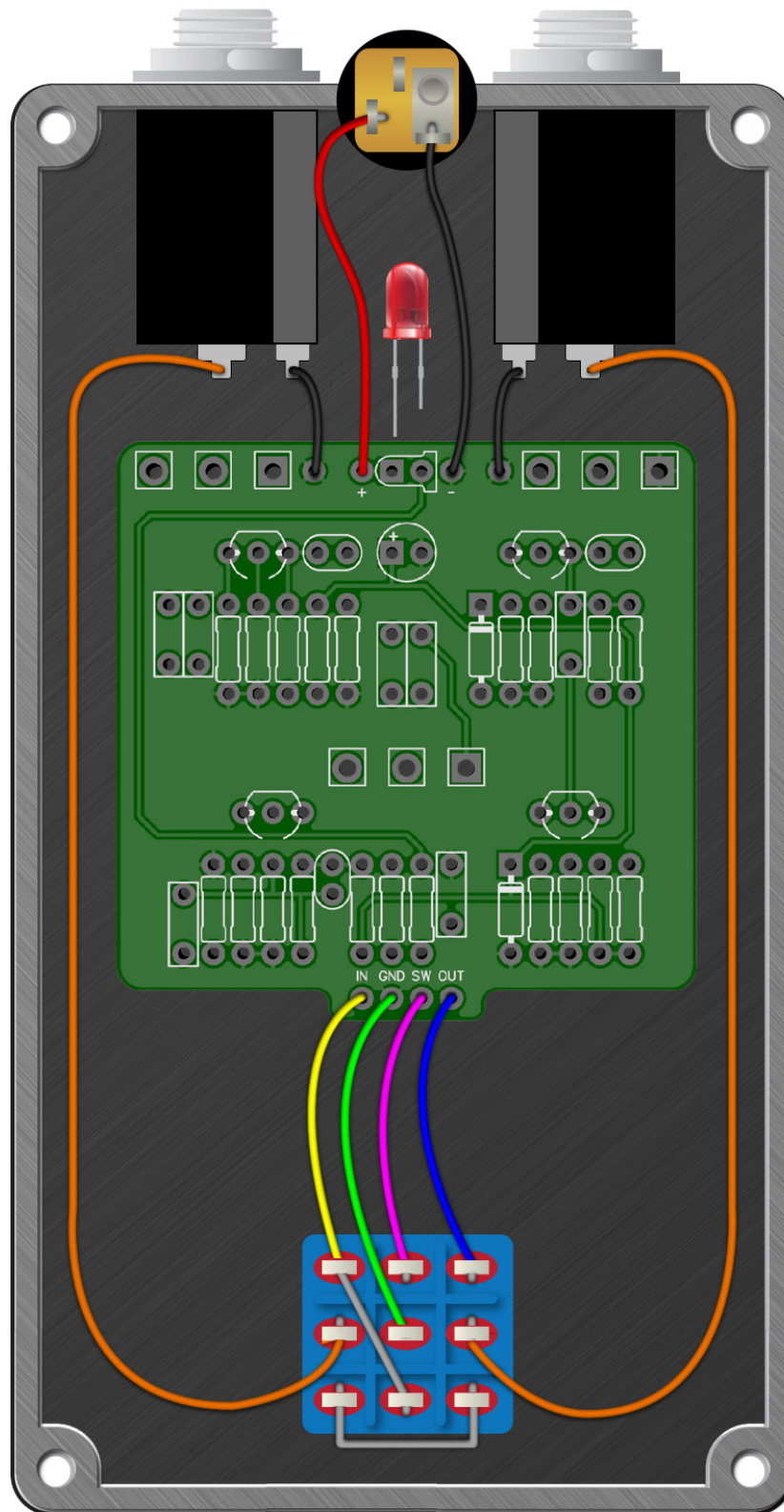
VOL	A10K
GAIN	B1M
BASS	B50K
TREBLE	B50K

### Switches

SW1	DPDT Toggle (On/Off/On)
-----	-------------------------



# Wiring Diagram



# Drill Template

4S125B enclosure with top mounted jacks

