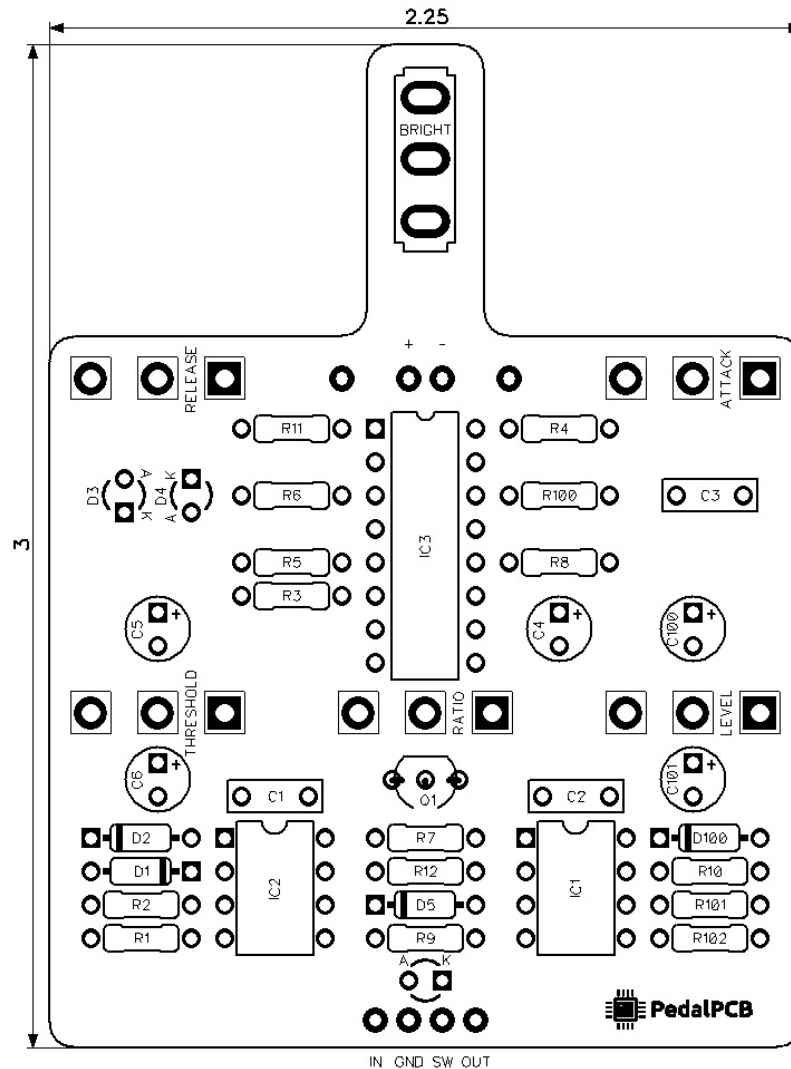


PedalPCB

Thumb Sucker

Revised 4/9/21

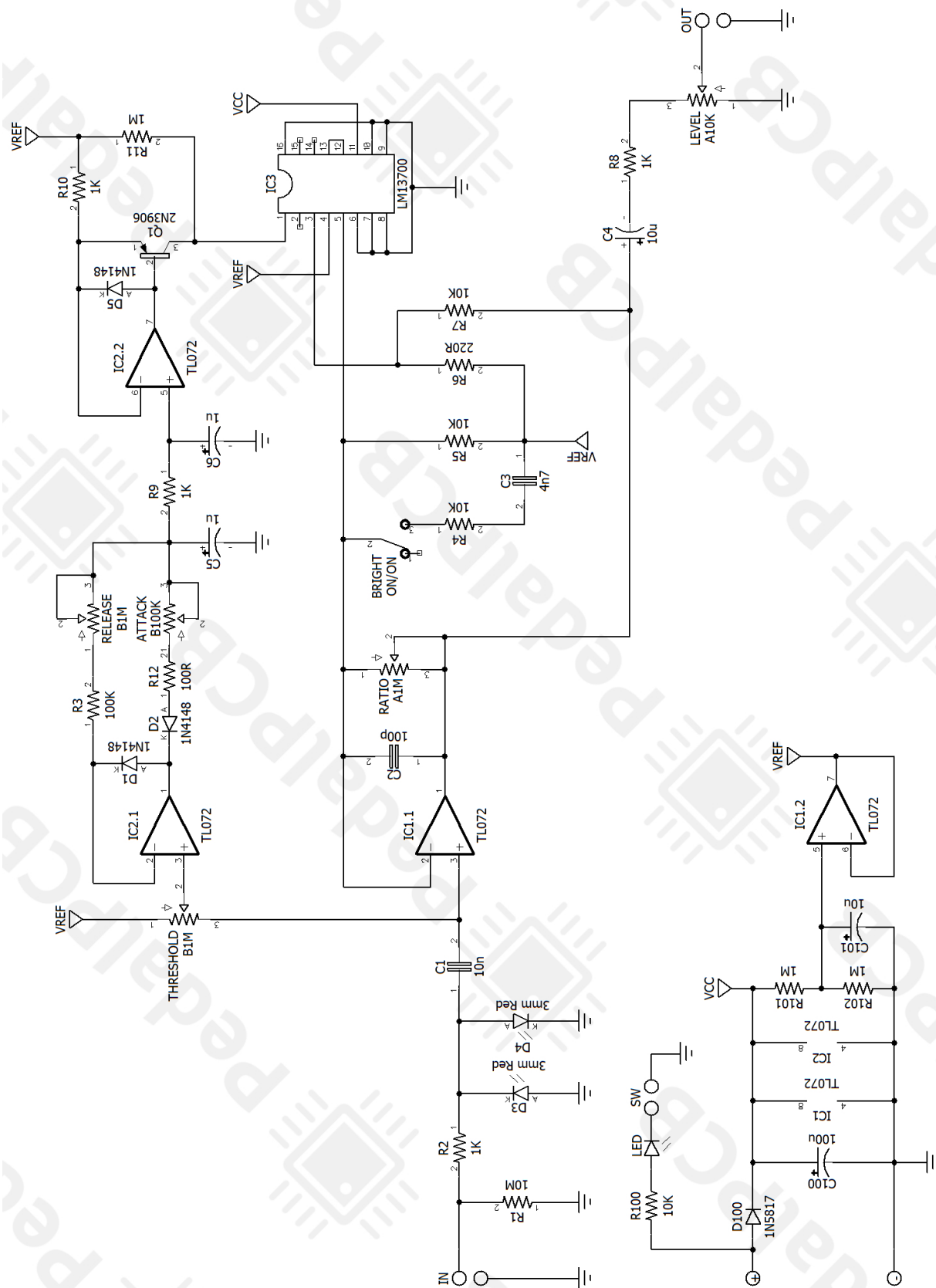


CONTROLS AND FEATURES

- Attack
- Release
- Level
- Ratio
- Threshold
- Bright (Toggle switch)

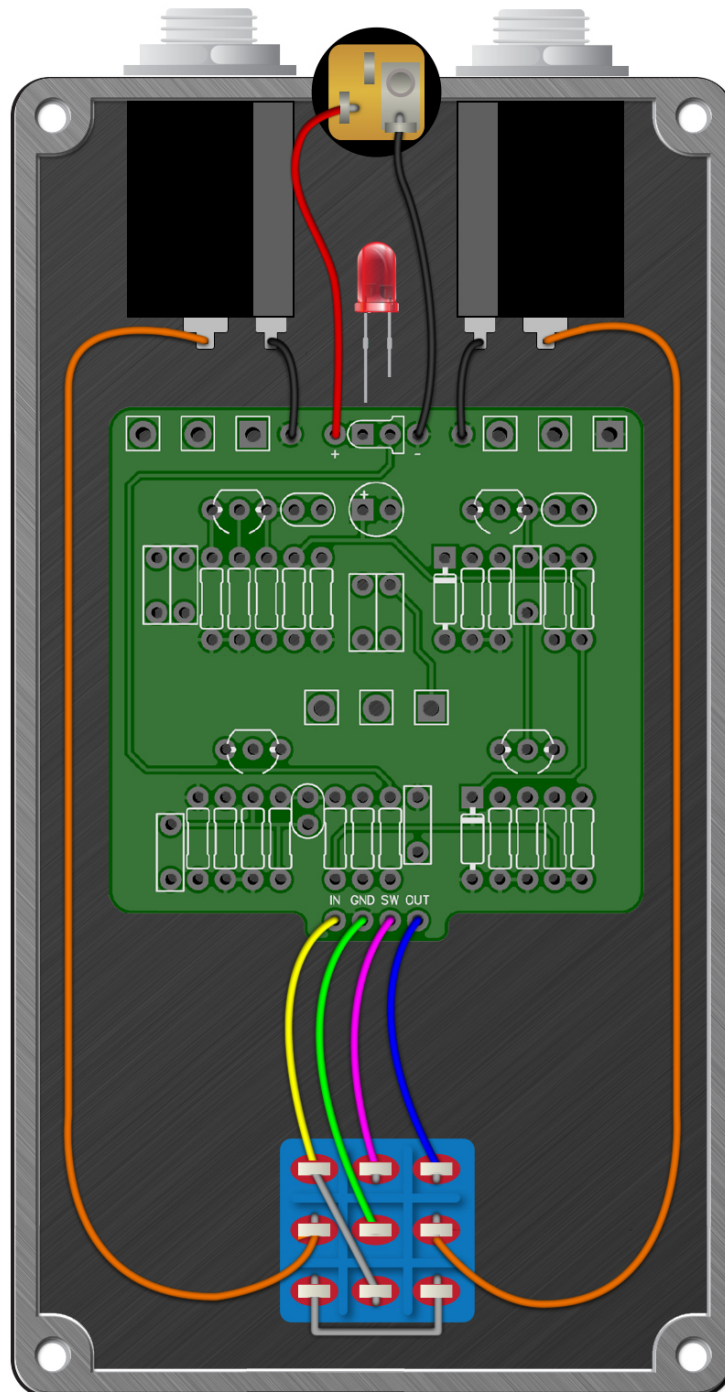
All trademarks and registered trademarks are the property of their respective owners. The company, product, and service names used in this web site are for identification purposes only. Use of these names, logos, and brands does not imply endorsement.

LOCATION	VALUE	TYPE	NOTES
R1	10M	Resistor, 1/4W	
R2	1K	Resistor, 1/4W	
R3	100K	Resistor, 1/4W	
R4	10K	Resistor, 1/4W	
R5	10K	Resistor, 1/4W	
R6	220R	Resistor, 1/4W	
R7	10K	Resistor, 1/4W	
R8	1K	Resistor, 1/4W	
R9	1K	Resistor, 1/4W	
R10	1K	Resistor, 1/4W	
R11	1M	Resistor, 1/4W	
R12	100R	Resistor, 1/4W	
R100	10K	Resistor, 1/4W	
R101	1M	Resistor, 1/4W	
R102	1M	Resistor, 1/4W	
C1	10n	Film capacitor, 7.2 x 2.5mm	
C2	100p	Ceramic capacitor	
C3	4n7	Film capacitor, 7.2 x 2.5mm	
C4	10u	Electrolytic capacitor, 5mm	
C5	1u	Electrolytic capacitor, 5mm	
C6	1u	Electrolytic capacitor, 5mm	
C100	100u	Electrolytic capacitor, 5mm	
C101	10u	Electrolytic capacitor, 5mm	
D1	1N4148	Signal diode, DO-35	
D2	1N4148	Signal diode, DO-35	
D3	3mm Red	3mm Red LED, Diffused	
D4	3mm Red	3mm Red LED, Diffused	
D5	1N4148	Signal diode, DO-35	
D100	1N5817	Schottky diode, DO-41	
Q1	2N3906	BJT transistor, PNP TO-92	
IC1	TL072	Dual op-amp, DIP8	
IC2	TL072	Dual op-amp, DIP8	
IC3	LM13700	Transconductance Amplifier (OTA)	
ATTACK	B100K	16mm right-angle PCB mount pot	
RELEASE	B1M	16mm right-angle PCB mount pot	
LEVEL	A10K	16mm right-angle PCB mount pot	
RATIO	A1M	16mm right-angle PCB mount pot	
THRESHOLD	B1M	16mm right-angle PCB mount pot	
BRIGHT	ON/ON	Toggle switch, SPDT	2-position (ON/ON)



Thumb Sucker

Wiring Diagram



Thumb Sucker

Drill Template
125B Enclosure

