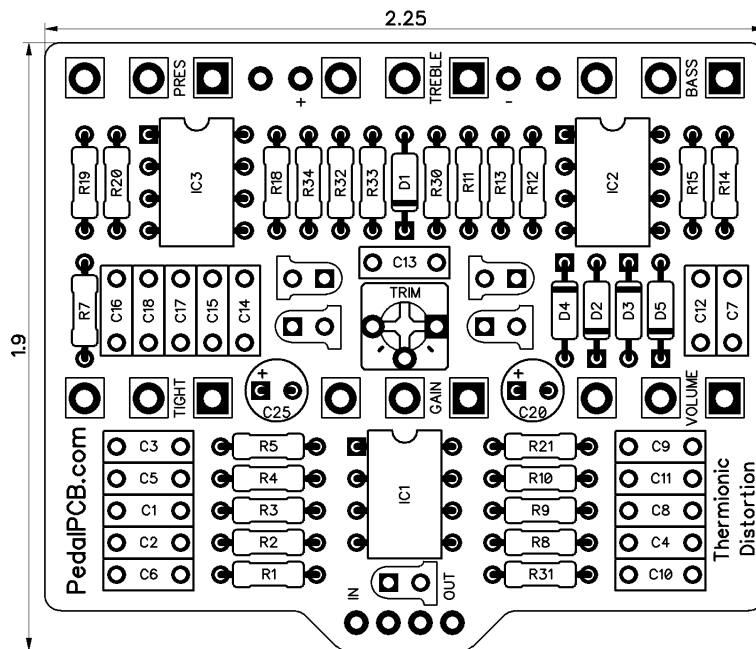


PedalPCB.com

Thermionic Distortion

Revision 10.25.19



Resistors

| | |
|-----|------|
| R1 | 1M |
| R2 | 470K |
| R3 | 10K |
| R4 | 22K |
| R5 | 39K |
| R7 | 4.7K |
| R8 | 10K |
| R9 | 22K |
| R10 | 22K |
| R11 | 22K |
| R12 | 22K |
| R13 | 220K |
| R14 | 10K |
| R15 | 10K |
| R18 | 2.2K |
| R19 | 33K |
| R20 | 33K |
| R21 | 10K |
| R30 | 10Ω |
| R31 | 4.7K |
| R32 | 10K |
| R33 | 10K |
| R34 | 2K2 |

Capacitors

| | |
|-----|------|
| C1 | 22n |
| C2 | 47p |
| C3 | 10n |
| C4 | 1n |
| C5 | 100n |
| C6 | 100n |
| C7 | 100n |
| C8 | 100n |
| C9 | 47p |
| C10 | 100n |
| C11 | 47n |
| C12 | 120p |
| C13 | 100p |
| C14 | 10n |
| C15 | 4.7n |
| C16 | 22n |
| C17 | 220n |
| C18 | 220n |
| C20 | 100u |
| C25 | 22u |

Integrated Circuits

| | |
|-----|-------|
| IC1 | TL072 |
| IC2 | TL072 |
| IC3 | TL072 |

Diodes

| | |
|----|--------|
| D1 | 1N5817 |
| D2 | 1N4148 |
| D3 | 1N4148 |
| D4 | 1N4148 |
| D5 | 1N4148 |

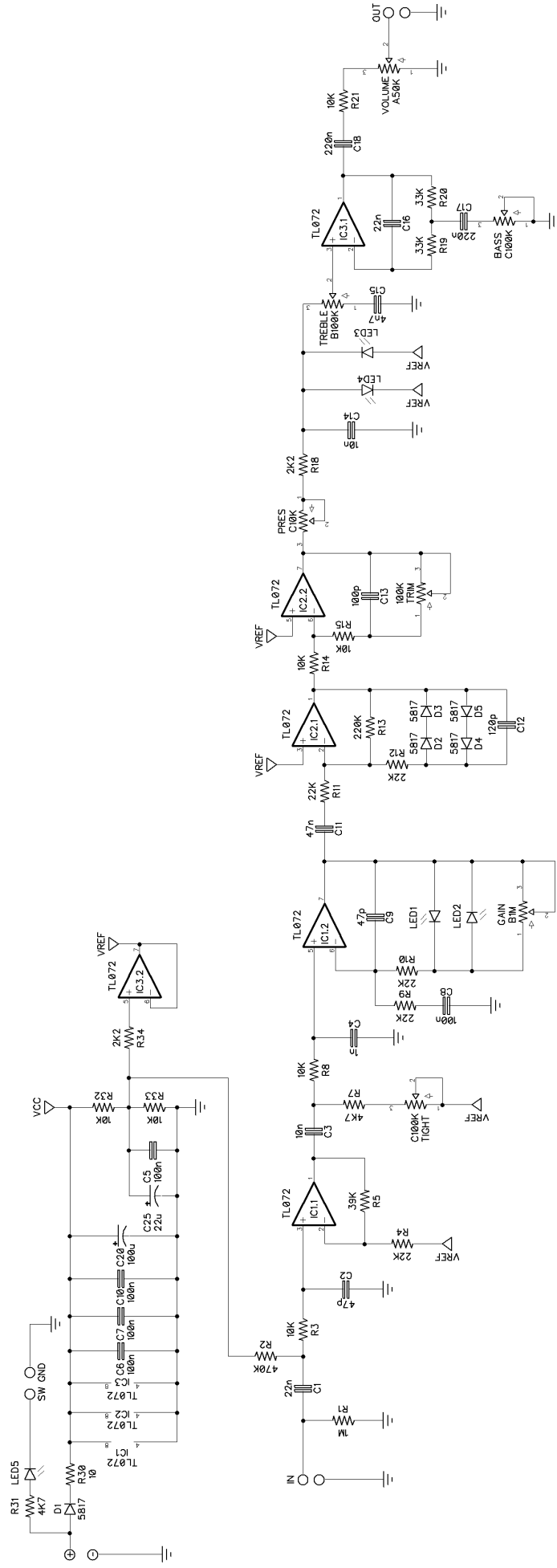
LEDs

| | |
|------|---------|
| LED1 | 3mm Red |
| LED2 | 3mm Red |
| LED3 | 3mm Red |
| LED4 | 3mm Red |
| LED5 | 3mm Red |

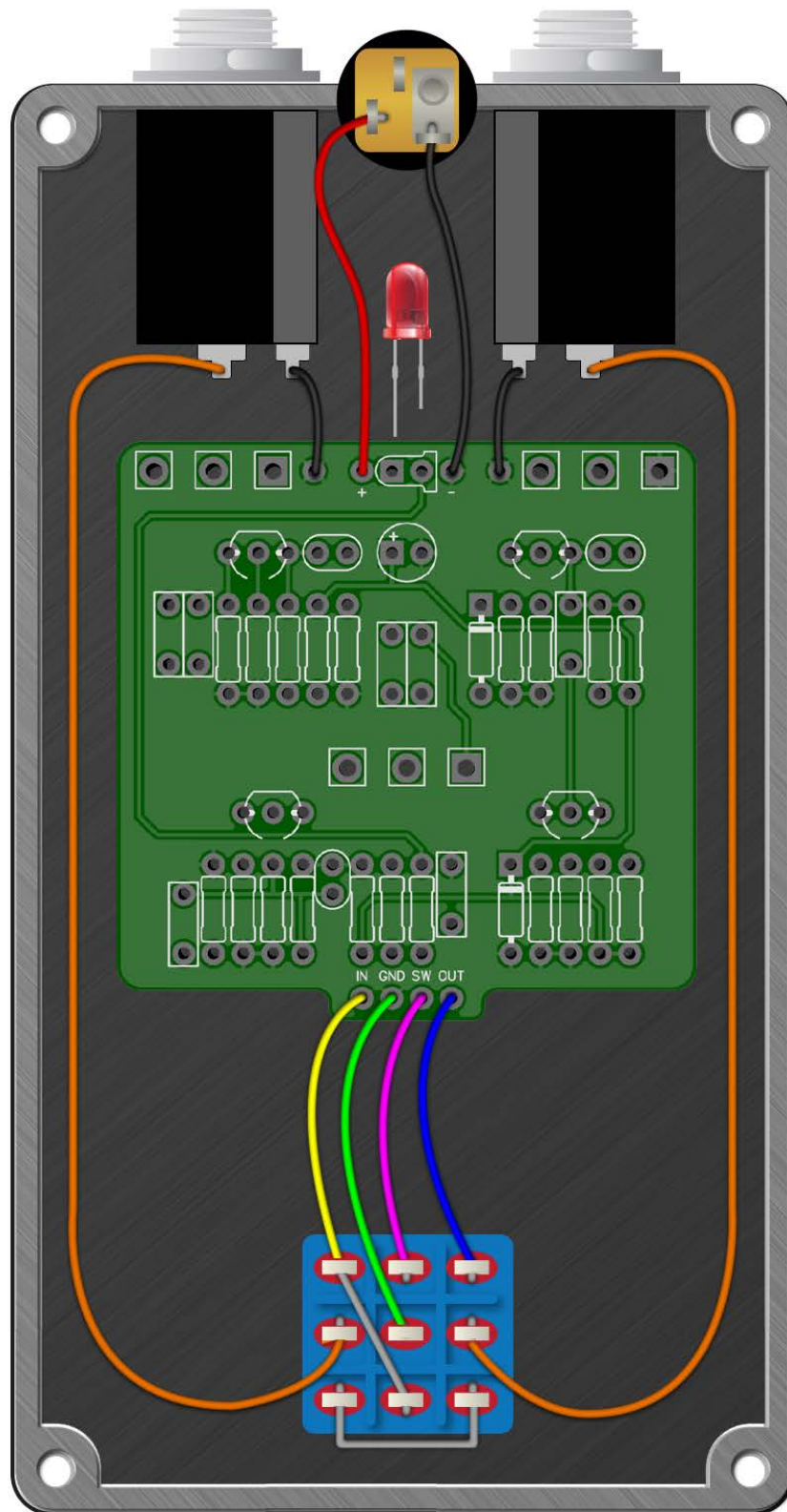
Potentiometers

| | |
|----------|-------|
| GAIN | B1M |
| BASS | C100K |
| TIGHT | C100K |
| TREBLE | B100K |
| VOLUME | A50K |
| PRESENCE | C10K |
| TRIM | 100K |

Thermionic Distortion



Wiring Diagram



Drill Template

4S125B enclosure with top mounted jacks

