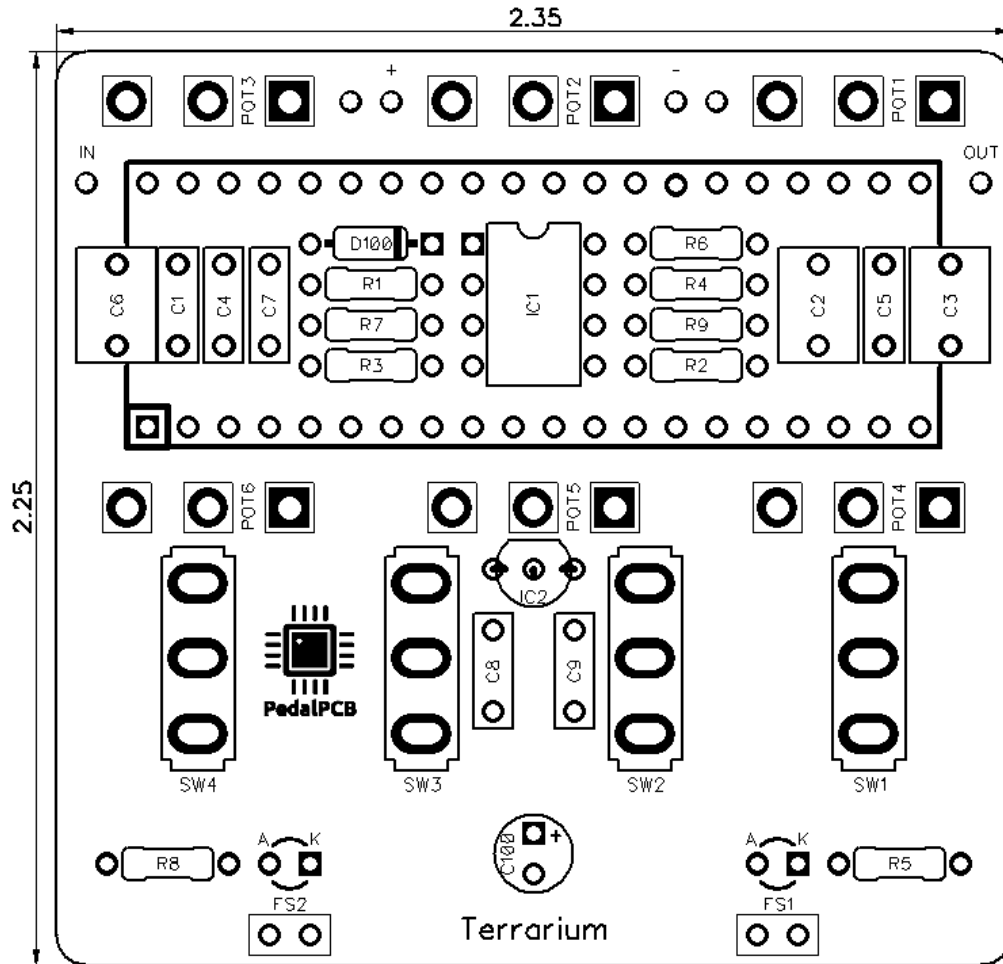




Terrarium Platform

Revised 1/7/22

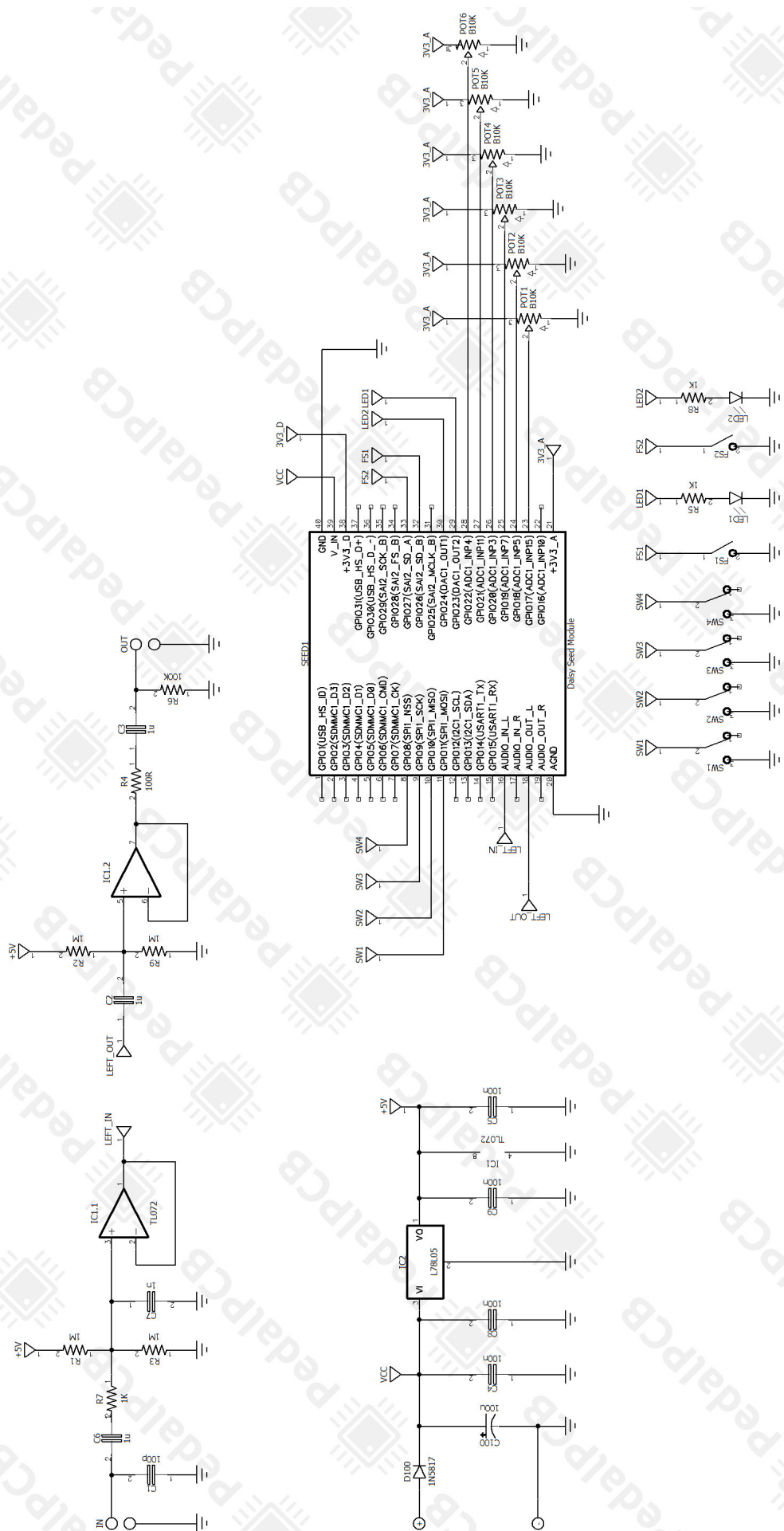


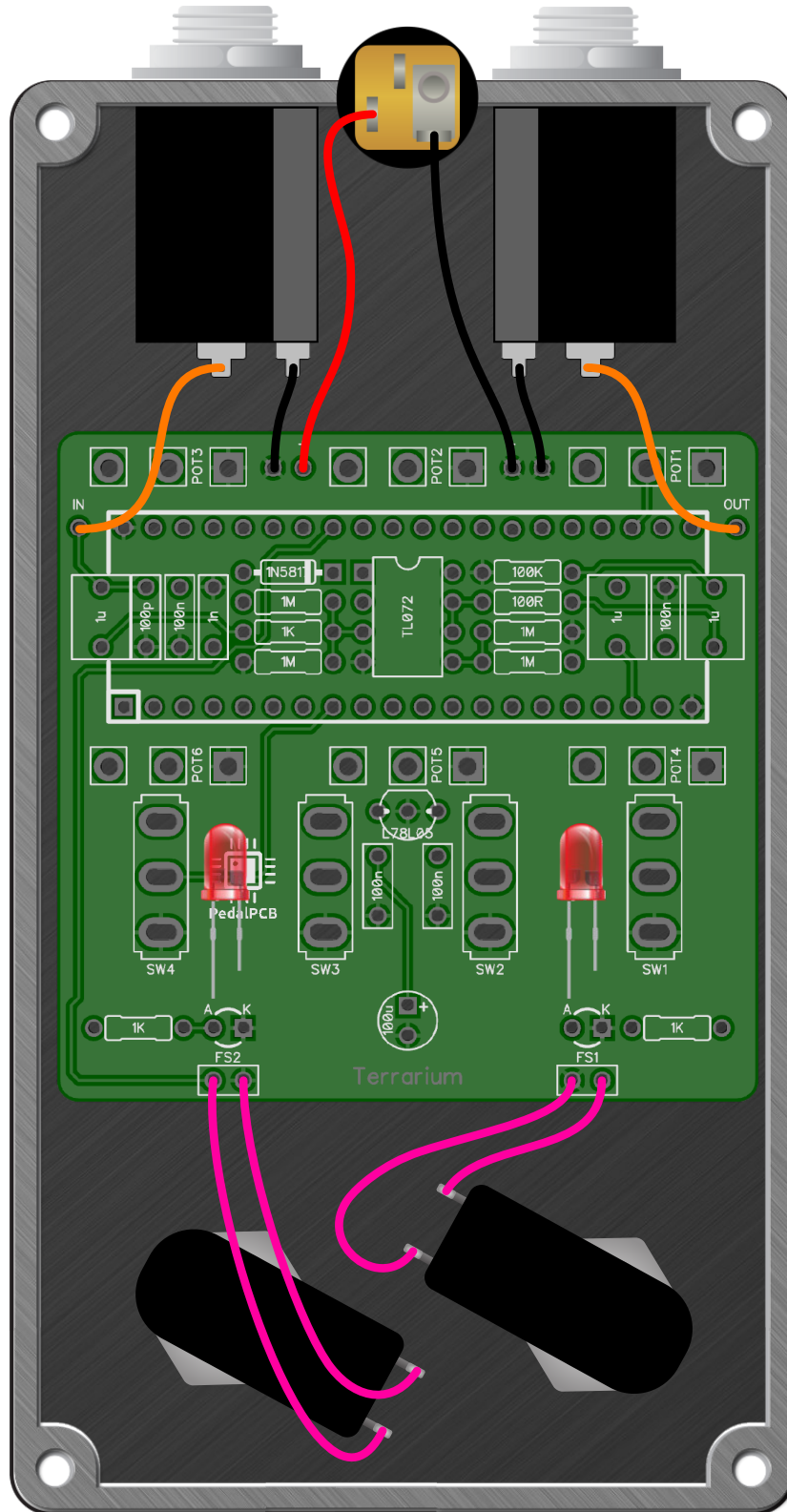
CONTROLS AND FEATURES

- Potentiometer 1
- Potentiometer 2
- Potentiometer 3
- Potentiometer 4
- Potentiometer 5
- Potentiometer 6
- Toggle Switch 1
- Toggle Switch 2
- Toggle Switch 3
- Toggle Switch 4
- Footswitch 1
- Footswitch 2
- LED 1
- LED 2

All trademarks and registered trademarks are the property of their respective owners. The company, product, and service names used in this web site are for identification purposes only. Use of these names, logos, and brands does not imply endorsement.

LOCATION	VALUE	TYPE	NOTES
R1	1M	Resistor, 1/4W	
R2	1M	Resistor, 1/4W	
R3	1M	Resistor, 1/4W	
R4	100R	Resistor, 1/4W	
R5	1K	Resistor, 1/4W	
R6	100K	Resistor, 1/4W	
R7	1K	Resistor, 1/4W	
R8	1K	Resistor, 1/4W	
R9	1M	Resistor, 1/4W	
C1	100p	Ceramic capacitor	
C2	1u	MLCC capacitor, 7.2 x 2.5mm	
C3	1u	MLCC capacitor, 7.2 x 2.5mm	
C4	100n	Film capacitor, 7.2 x 2.5mm	
C5	100n	Film capacitor, 7.2 x 2.5mm	
C6	1u	MLCC capacitor, 7.2 x 2.5mm	
C7	1n	Film capacitor, 7.2 x 2.5mm	
C8	100n	Film capacitor, 7.2 x 2.5mm	
C9	100n	Film capacitor, 7.2 x 2.5mm	
C100	100u	Electrolytic capacitor, 5mm	
D100	1N5817	Schottky diode, DO-41	
IC1	TL072	Dual op-amp, DIP8	
IC2	L78L05	Linear voltage regulator, 5V	
SEED1		Electro-Smith Daisy Seed Module	
POT1	B10K	16mm right-angle PCB mount pot	
POT2	B10K	16mm right-angle PCB mount pot	
POT3	B10K	16mm right-angle PCB mount pot	
POT4	B10K	16mm right-angle PCB mount pot	
POT5	B10K	16mm right-angle PCB mount pot	
POT6	B10K	16mm right-angle PCB mount pot	
SW1		Toggle switch, SPDT	2-position (ON/ON)
SW2		Toggle switch, SPDT	2-position (ON/ON)
SW3		Toggle switch, SPDT	2-position (ON/ON)
SW4		Toggle switch, SPDT	2-position (ON/ON)
FS1		Foot switch, SPST	Momentary SPST
FS2		Foot switch, SPST	Momentary SPST
PINHEADER		20-pin Female 2.54mm Pinheader	Quantity: 2





Terrarium Platform

Drill Template
125B enclosure

