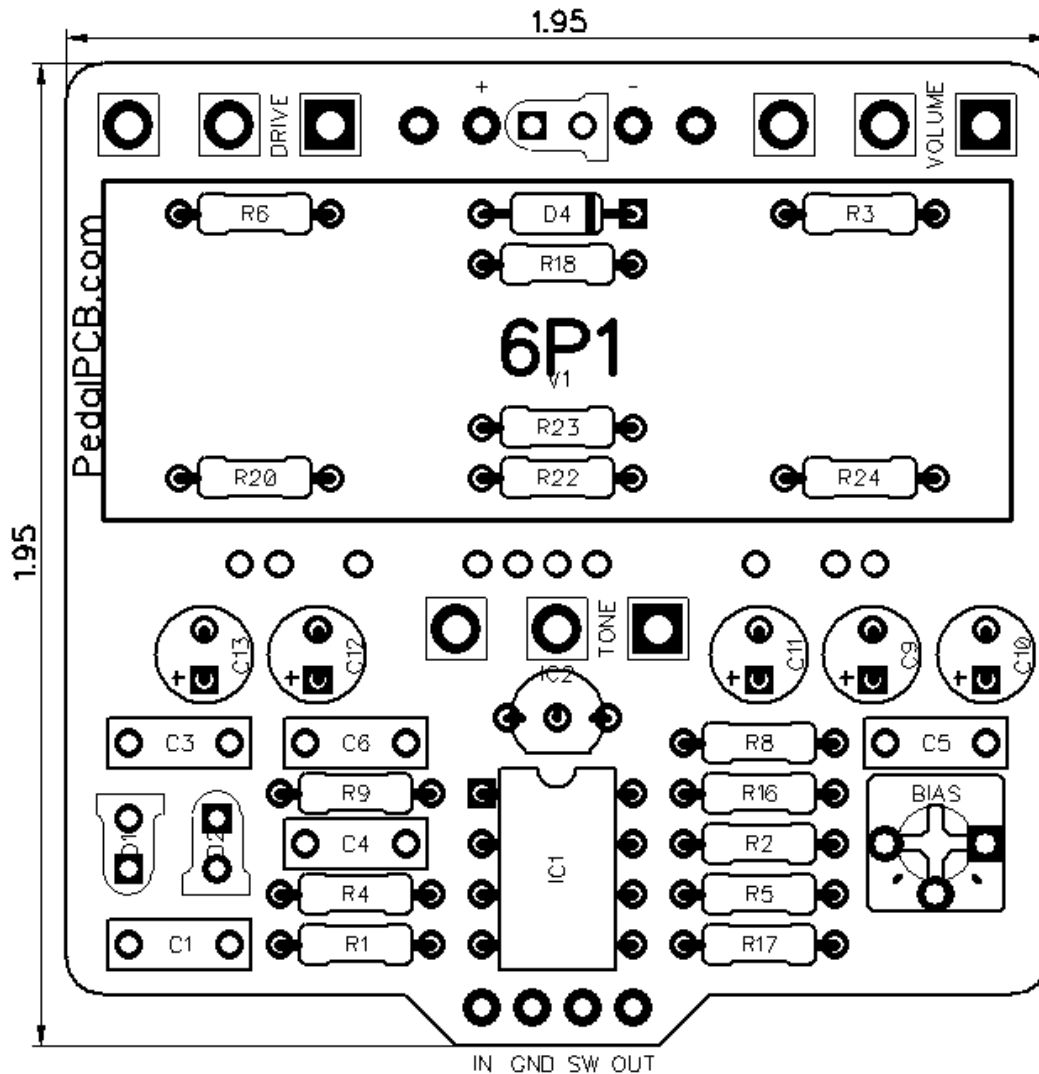




PedalPCB

SuperNuva

Revision 07.02.18



Controls

- **Volume** - Sets the overall output volume
- **Tone** - Adjusts the tone from warm to bright
- **Drive** - Controls the amount of overdrive
- **Bias (trimpot)** - Sets the Nutube bias current

All trademarks and registered trademarks are the property of their respective owners. The company, product, and service names used in this web site are for identification purposes only. Use of these names, logos, and brands does not imply endorsement.

RESISTORS

R1 2M2
R2 10K
R3 1K
R4 1K
R5 1M
R6 20K
R8 4K7
R9 47
R16 10K
R17 10K
R18 4K7
R20 150
R22 1M
R23 1M
R24 10K

POTENTIOMETERS

VOLUME B100K
TONE B1K
DRIVE B100K

TRIM POTS

BIAS 10K Trim (3362P)

CAPACITORS

C1 100n
C3 1n
C4 100n
C5 100n
C6 220n
C9 10u
C10 100u
C11 100u
C12 100u
C13 10u

TRANSISTORS

Q1 2N3904
Q2 2N3904

INTEGRATED CIRCUITS

IC1 TL072
IC2 L78L33

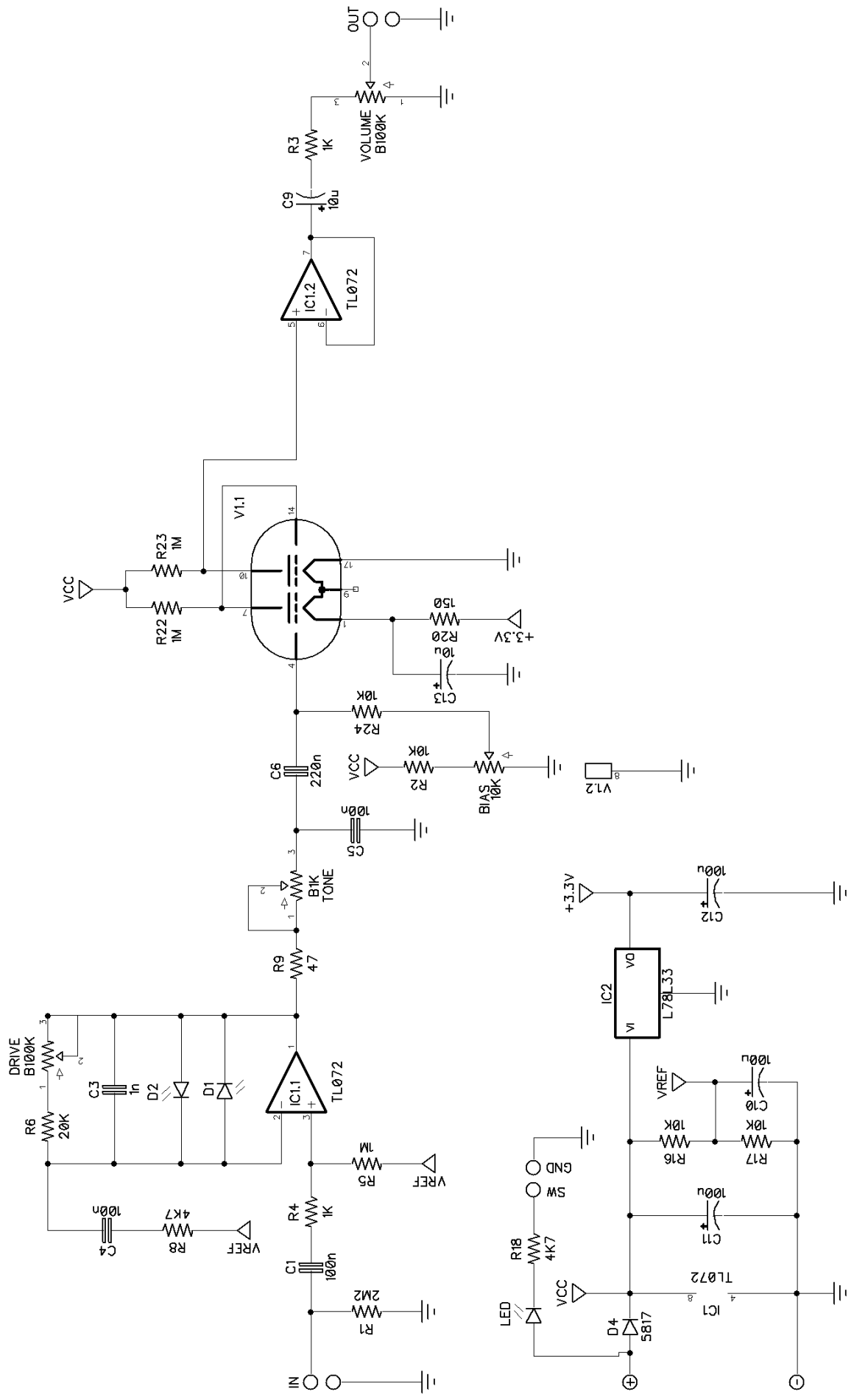
DIODES

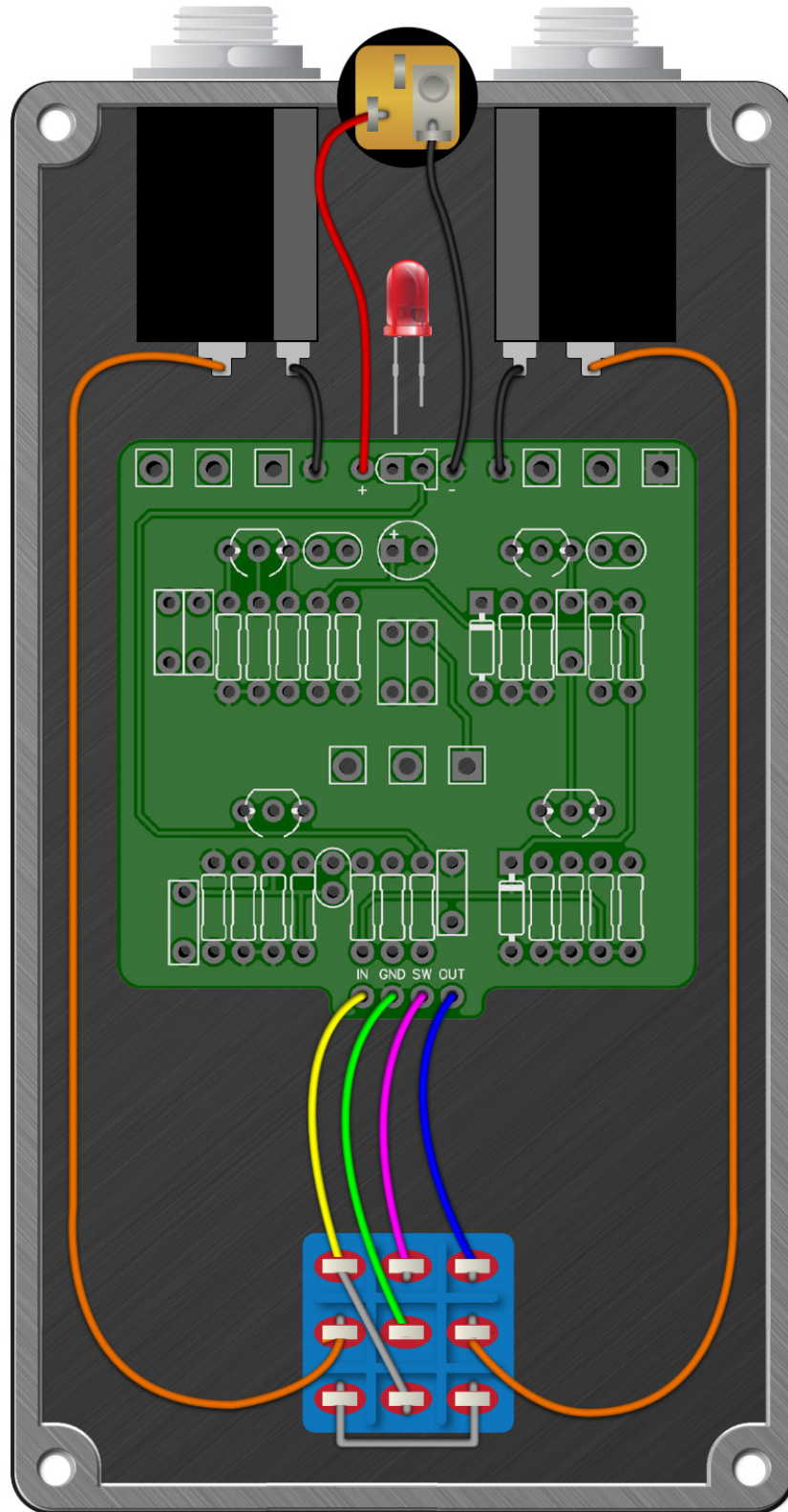
D1
D2
D4 1N5817

TUBES

V1 Korg Nutube

SuperNuva





SuperNuva

Drill Template
125B enclosure with top mounted jacks

