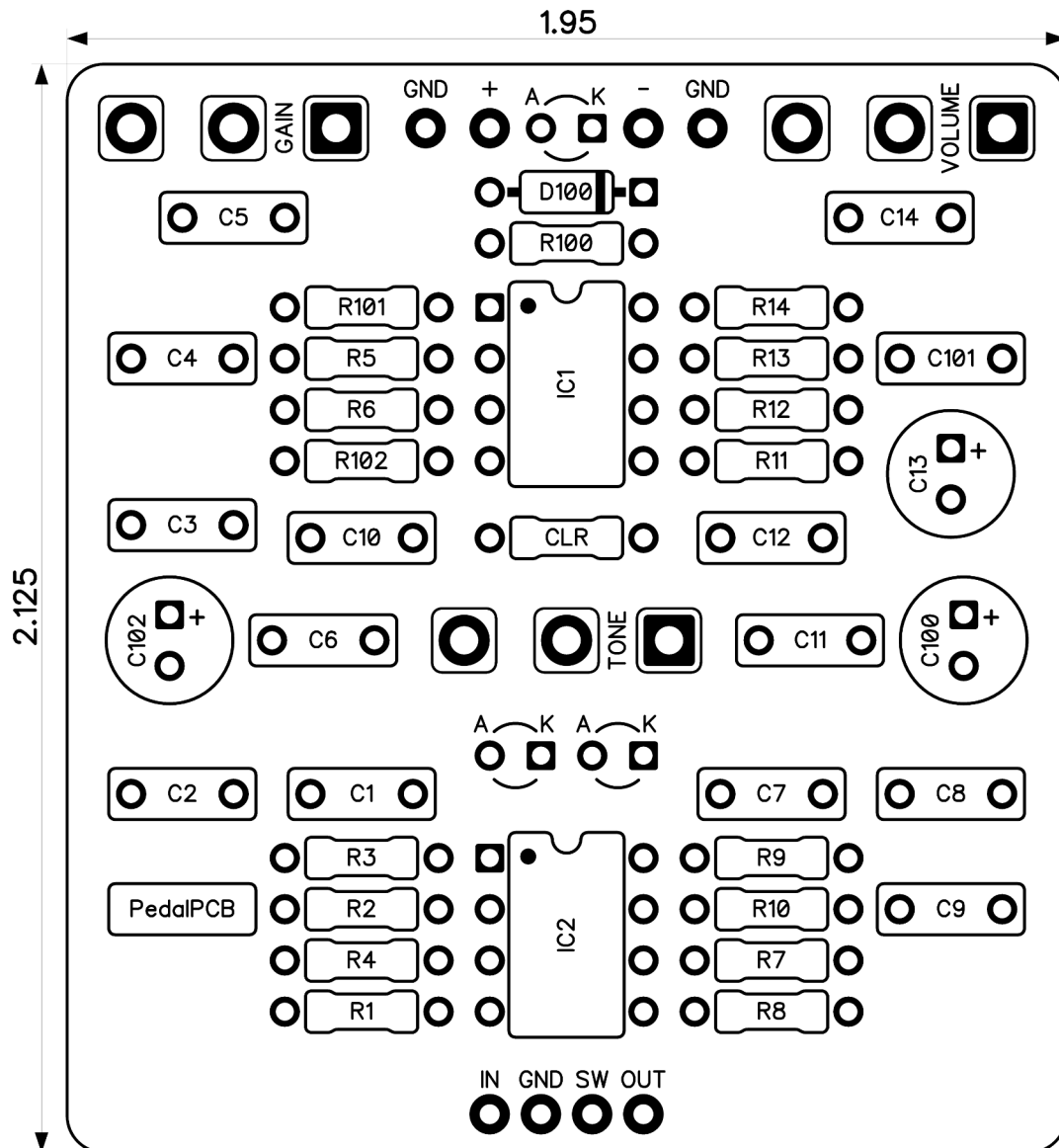


PedalPCB

Stone Age Distortion

Revised 12/16/23



CONTROLS AND FEATURES

- Volume
- Tone
- Gain

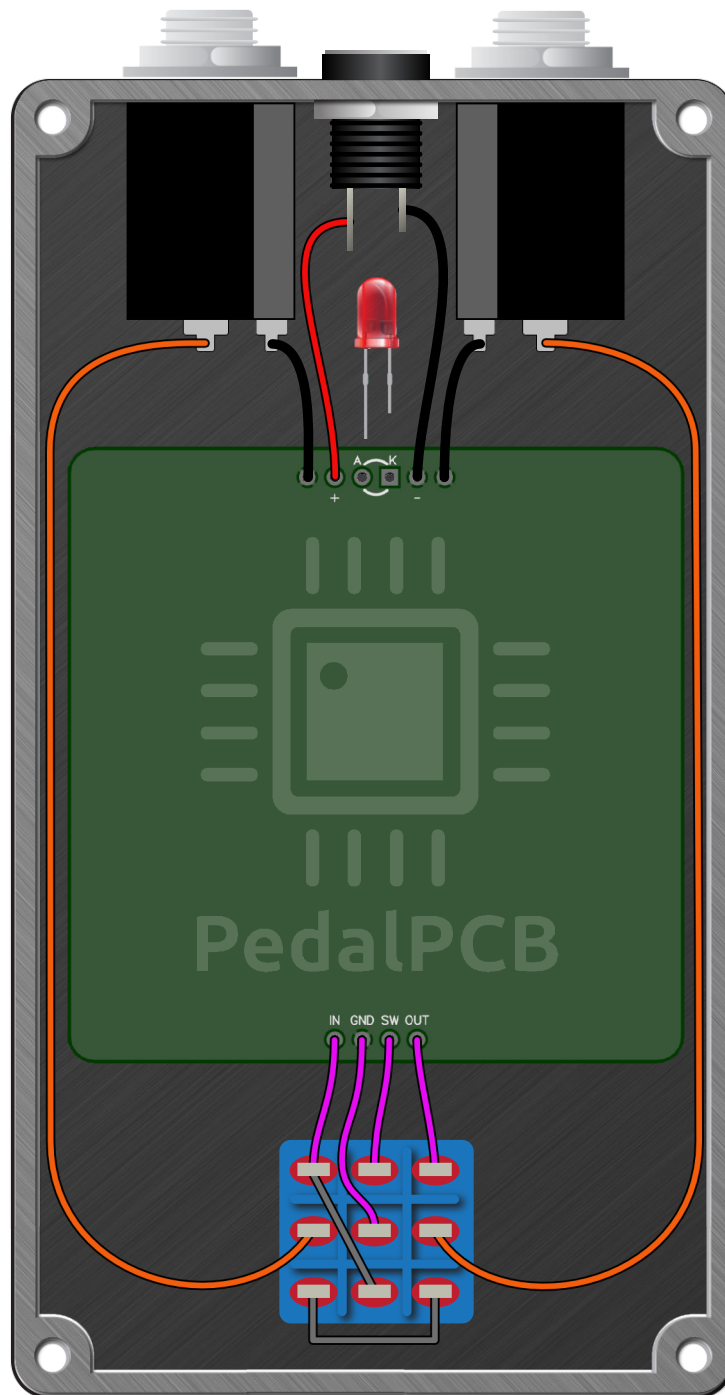
All trademarks and registered trademarks are the property of their respective owners. The company, product, and service names used in this web site are for identification purposes only. Use of these names, logos, and brands does not imply endorsement.

LOCATION	VALUE	TYPE	NOTES
R1	1M5	Resistor, 1/4W	
R2	150K	Resistor, 1/4W	
R3	39K	Resistor, 1/4W	
R4	1M5	Resistor, 1/4W	
R5	6K8	Resistor, 1/4W	
R6	470K	Resistor, 1/4W	
R7	47K	Resistor, 1/4W	
R8	47K	Resistor, 1/4W	
R9	1M5	Resistor, 1/4W	
R10	4K7	Resistor, 1/4W	
R11	1M5	Resistor, 1/4W	
R12	4K7	Resistor, 1/4W	
R13	10K	Resistor, 1/4W	
R14	180K	Resistor, 1/4W	
R100	100R	Resistor, 1/4W	
R101	10K	Resistor, 1/4W	
R102	10K	Resistor, 1/4W	
CLR	4K7	Resistor, 1/4W	* LED current limiting resistor
C1	100n	Film capacitor, 7.2 x 2.5mm	
C2	50p	Ceramic capacitor	
C3	10n	Film capacitor, 7.2 x 2.5mm	
C4	33n	Film capacitor, 7.2 x 2.5mm	
C5	50p	Ceramic capacitor	
C6	10n	Film capacitor, 7.2 x 2.5mm	
C7	50p	Ceramic capacitor	
C8	4n7	Film capacitor, 7.2 x 2.5mm	
C9	4n7	Film capacitor, 7.2 x 2.5mm	
C10	15n	Film capacitor, 7.2 x 2.5mm	
C11	15n	Film capacitor, 7.2 x 2.5mm	
C12	10n	Film capacitor, 7.2 x 2.5mm	
C13	1u	Electrolytic capacitor, 5mm	
C14	50p	Ceramic capacitor	
C100	470u	Electrolytic capacitor, 5mm	
C101	100n	Film capacitor, 7.2 x 2.5mm	
C102	100u	Electrolytic capacitor, 5mm	
LED1	BLUE	3mm Blue LED	
LED2	RED	3mm Red LED	
D100	1N5817	Schottky diode, DO-41	
IC1	TL072	Dual op-amp, DIP8	
IC2	TL072	Dual op-amp, DIP8	
VOLUME	A100K	16mm right-angle PCB mount pot	
TONE	B25K	16mm right-angle PCB mount pot	
GAIN	B100K	16mm right-angle PCB mount pot	



Schematic Diagram





Stone Age Distortion

Drill Template
125B Enclosure

