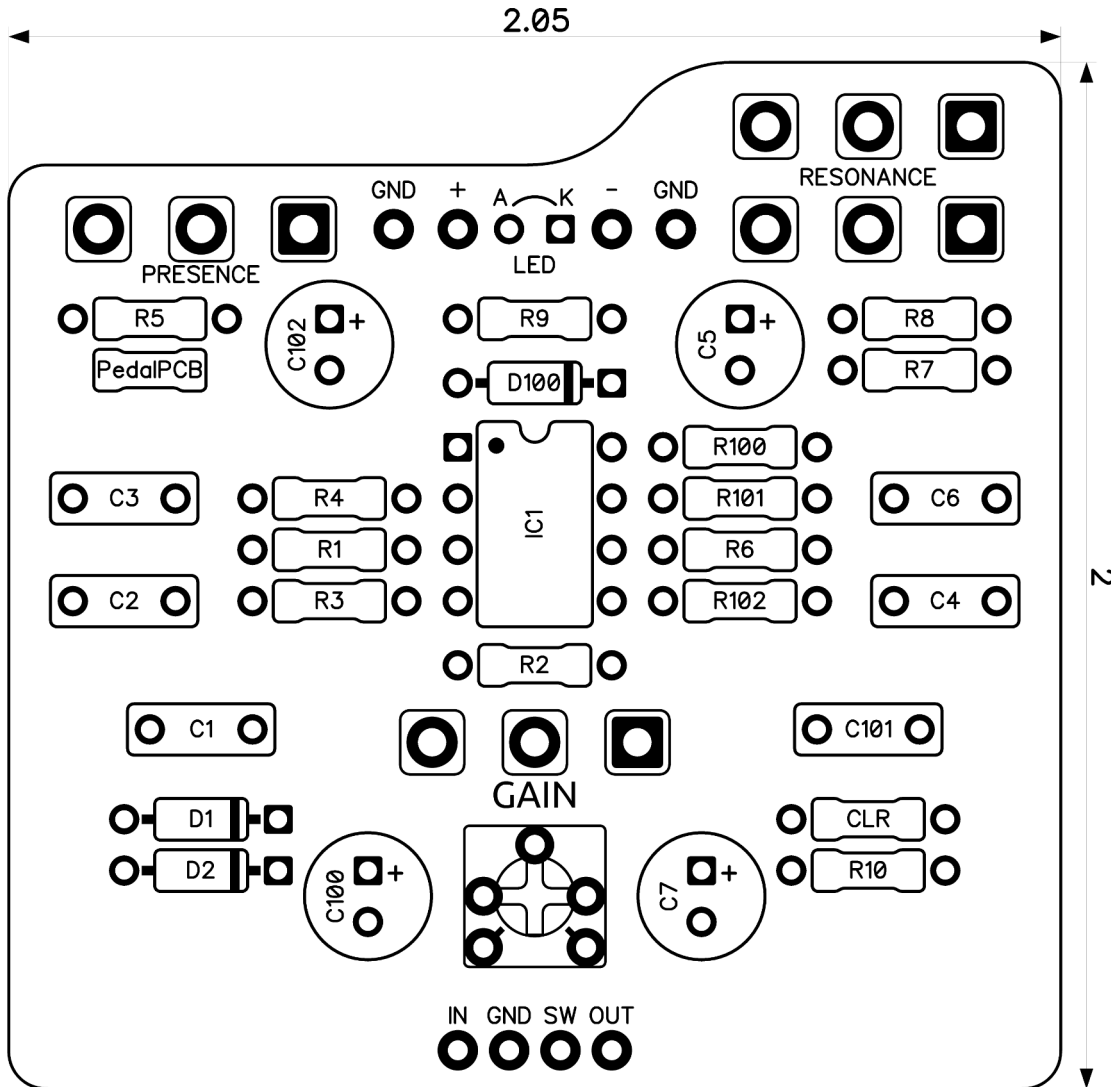




PedalPCB

Spelunker EQ

Revised 6/8/26

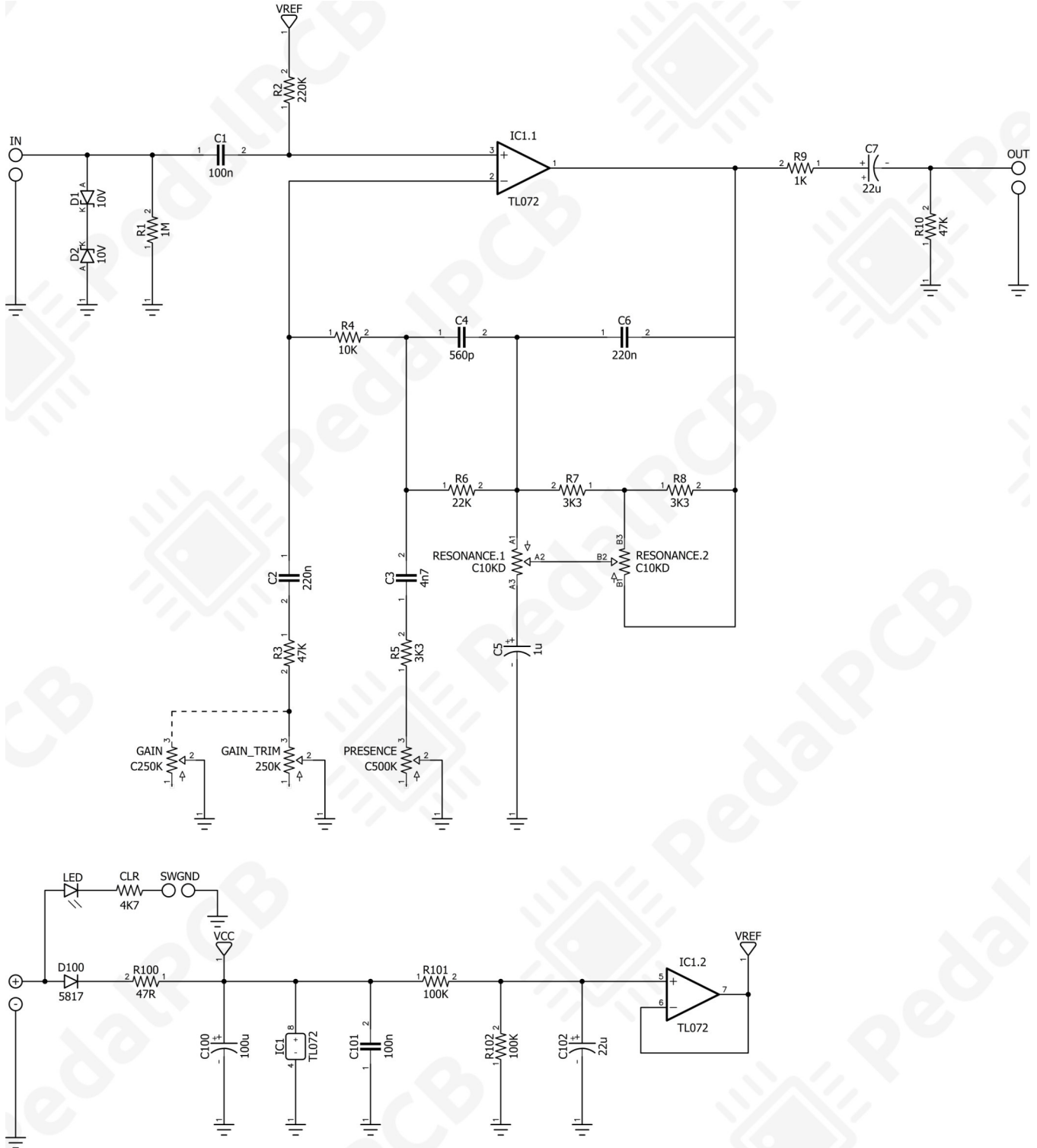


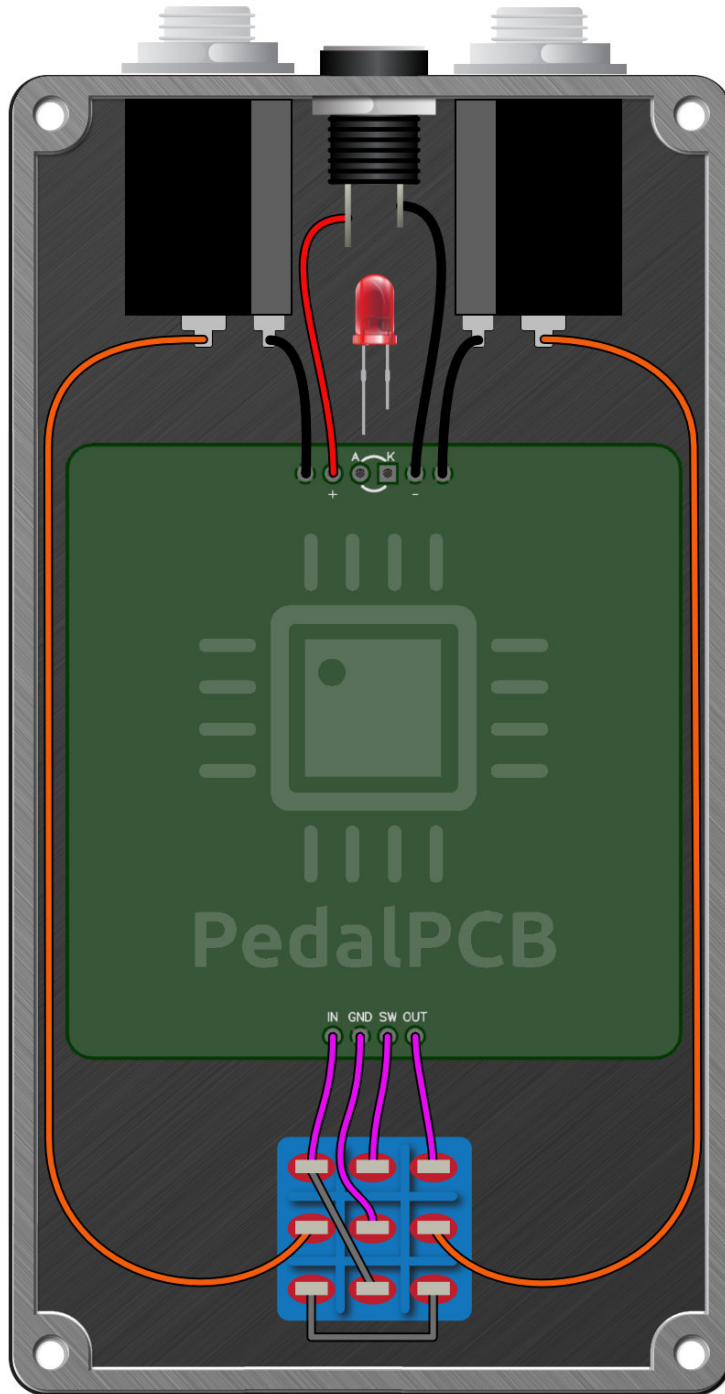
CONTROLS AND FEATURES

- Presence
- Resonance
- Gain (Internal or External)

All trademarks and registered trademarks are the property of their respective owners. The company, product, and service names used in this web site are for identification purposes only. Use of these names, logos, and brands does not imply endorsement.

LOCATION	VALUE	TYPE	NOTES
R1	1M	Resistor, 1/4W	
R2	220K	Resistor, 1/4W	
R3	47K	Resistor, 1/4W	
R4	10K	Resistor, 1/4W	
R5	3K3	Resistor, 1/4W	
R6	22K	Resistor, 1/4W	
R7	3K3	Resistor, 1/4W	
R8	3K3	Resistor, 1/4W	
R9	1K	Resistor, 1/4W	
R10	47K	Resistor, 1/4W	
R100	47R	Resistor, 1/4W	
R101	100K	Resistor, 1/4W	
R102	100K	Resistor, 1/4W	
CLR	4K7	Resistor, 1/4W	* LED current limiting resistor
C1	100n	Film capacitor, 7.2 x 2.5mm	
C2	220n	Film capacitor, 7.2 x 5.0mm	
C3	4n7	Film capacitor, 7.2 x 2.5mm	
C4	560p	Ceramic capacitor	
C5	1u	Electrolytic capacitor, 5mm	
C6	220n	Film capacitor, 7.2 x 5.0mm	
C7	22u	Electrolytic capacitor, 5mm	
C100	100u	Electrolytic capacitor, 5mm	
C101	100n	Film capacitor, 7.2 x 2.5mm	
C102	22u	Electrolytic capacitor, 5mm	
D1	1N5240B	Zener diode, 10V 1/2W	
D2	1N5240B	Zener diode, 10V 1/2W	
D100	1N5817	Schottky diode, DO-41	
IC1	TL072	Dual op-amp, DIP8	
PRESENCE	C500K	16mm right-angle PCB mount pot	
RESONANCE	C10K DUAL	16mm right-angle PCB mount pot	☛ Dual-gang potentiometer
GAIN_TRIM	250K	Trimmer potentiometer, 3362P type	
<i>Choose between internal trimpot or external potentiometer, do not install both</i>			
GAIN	C250K	16mm right-angle PCB mount pot	





Spelunker EQ

Drill Template
125B Enclosure

