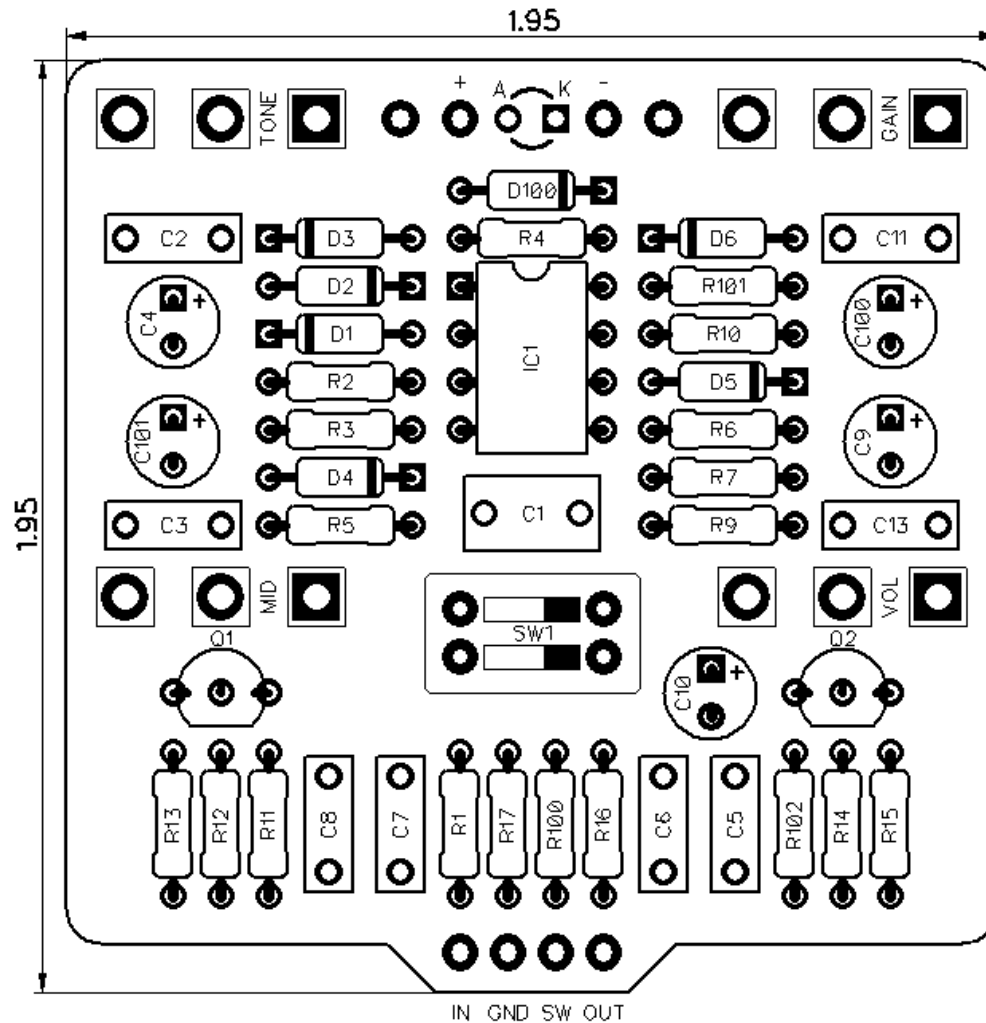


PedalPCB

Solenoid Overdrive

Revised 5/18/20



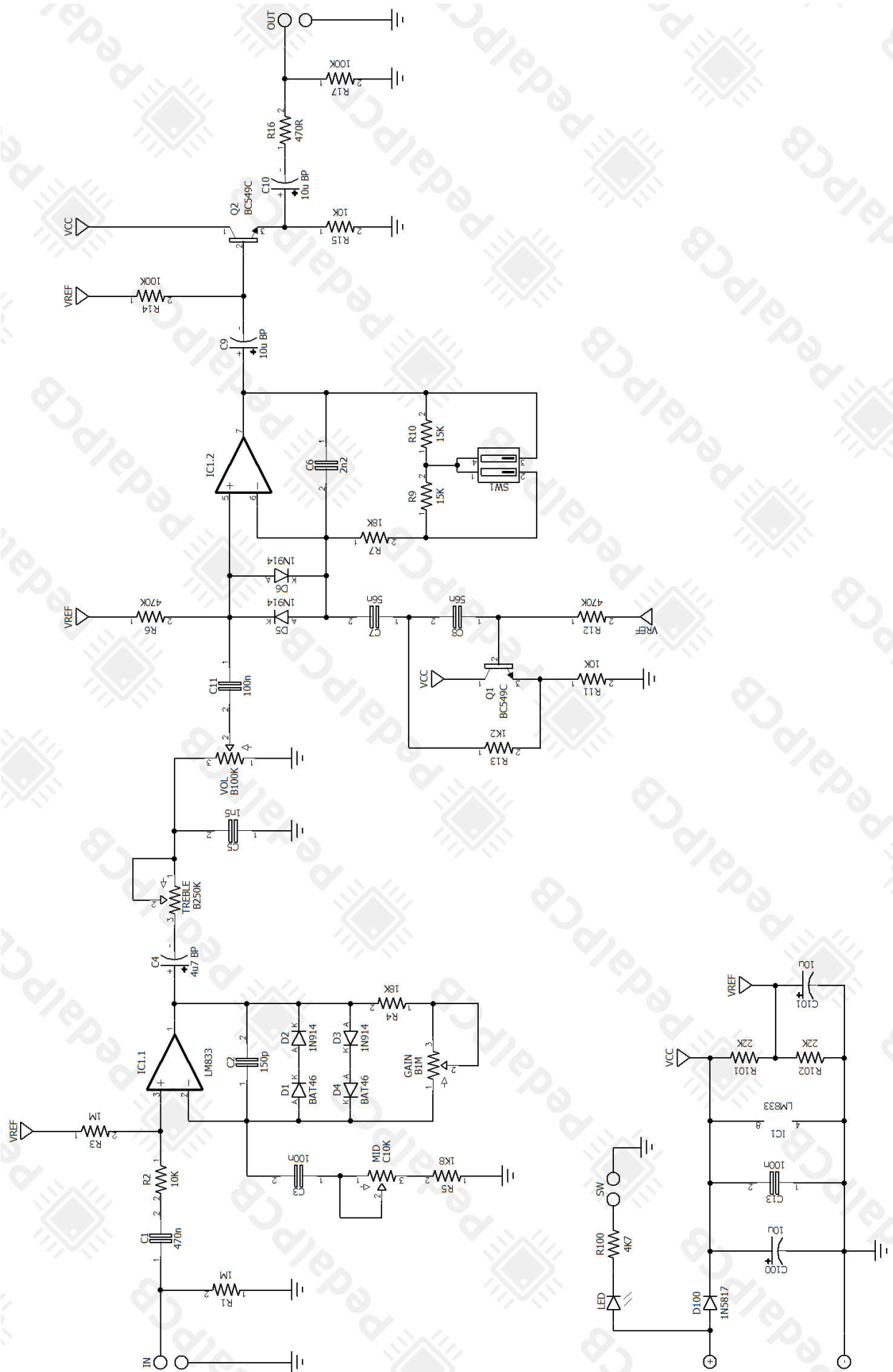
CONTROLS AND FEATURES

- **Gain** sets the amount of signal gain / drive
- **Tone** controls the amount of Treble
- **Volume** adjusts the overall output volume
- **Mid** controls the amount of Mid-Range boost
- **SW1** (*dipswitch*) controls the amount of Bass boost

All trademarks and registered trademarks are the property of their respective owners. The company, product, and service names used in this web site are for identification purposes only. Use of these names, logos, and brands does not imply endorsement.

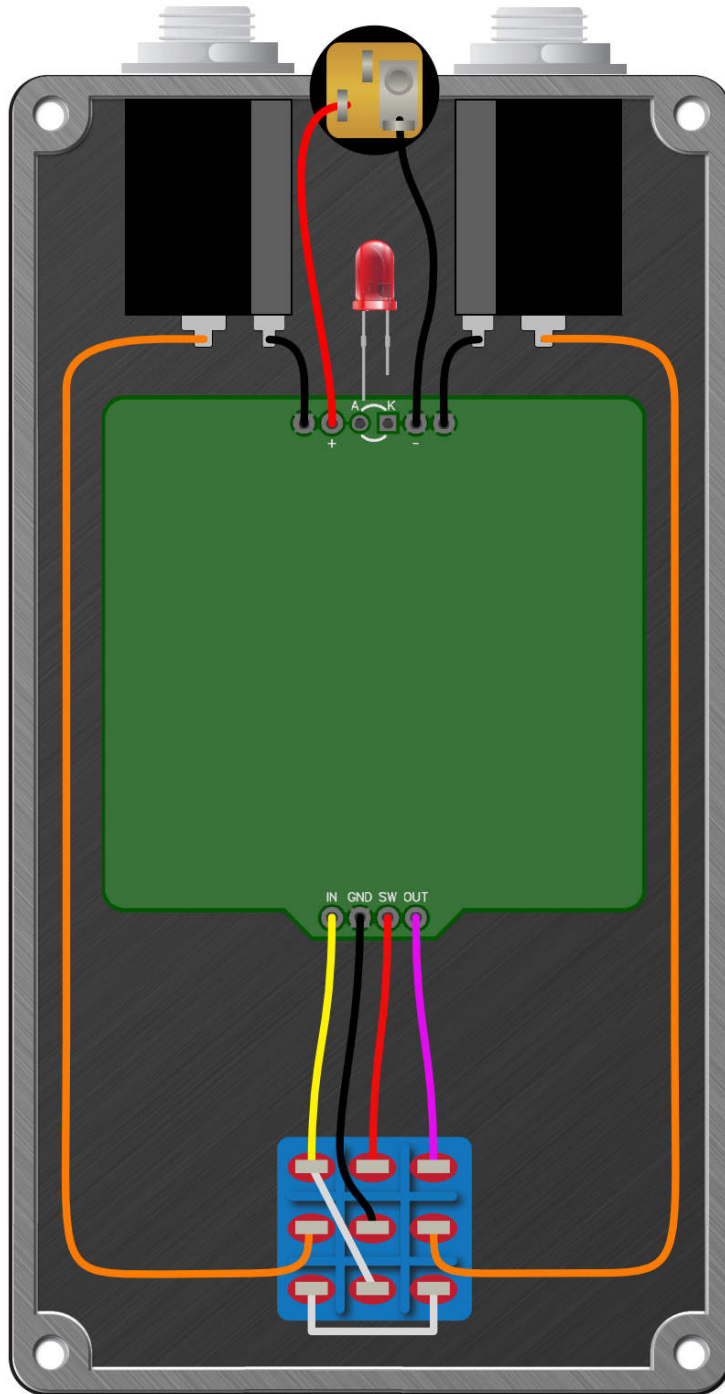
LOCATION	VALUE	TYPE	NOTES
R1	1M	Resistor, 1/4W	
R2	10K	Resistor, 1/4W	
R3	1M	Resistor, 1/4W	
R4	18K	Resistor, 1/4W	
R5	1K8	Resistor, 1/4W	
R6	470K	Resistor, 1/4W	
R7	18K	Resistor, 1/4W	
R9	15K	Resistor, 1/4W	
R10	15K	Resistor, 1/4W	
R11	10K	Resistor, 1/4W	
R12	470K	Resistor, 1/4W	
R13	1K2	Resistor, 1/4W	
R14	100K	Resistor, 1/4W	
R15	10K	Resistor, 1/4W	
R16	470R	Resistor, 1/4W	
R17	100K	Resistor, 1/4W	
R100	4K7	Resistor, 1/4W	
R101	22K	Resistor, 1/4W	
R102	22K	Resistor, 1/4W	
Q1	BC549C	BJT transistor, NPN TO-92	
Q2	BC549C	BJT transistor, NPN TO-92	
C1	470n	Film capacitor, 7.2 x 5mm	
C2	150p	Ceramic capacitor	
C3	100n	Film capacitor, 7.2 x 5mm	
C4	4u7	Electrolytic capacitor, 5mm	
C5	1n5	Film capacitor, 7.2 x 2.5mm	
C6	2n2	Film capacitor, 7.2 x 2.5mm	
C7	56n	Film capacitor, 7.2 x 2.5mm	
C8	56n	Film capacitor, 7.2 x 2.5mm	
C9	10u	Electrolytic capacitor, 5mm	
C10	10u	Electrolytic capacitor, 5mm	
C11	100n	Film capacitor, 7.2 x 2.5mm	
C13	100n	Film capacitor, 7.2 x 2.5mm	
C100	10u	Electrolytic capacitor, 5mm	
C101	10u	Electrolytic capacitor, 5mm	
D1	BAT46	Schottky diode, DO-35	
D2	1N914	Signal diode, DO-35	
D3	1N914	Signal diode, DO-35	
D4	BAT46	Schottky diode, DO-35	
D5	1N914	Signal diode, DO-35	
D6	1N914	Signal diode, DO-35	
D100	1N5817	Schottky diode, DO-41	
IC1	LM833	Dual op-amp, DIP8	

Continued on next page...



Solenoid Overdrive

Wiring Diagram



Solenoid Overdrive

Drill Template
125B enclosure

