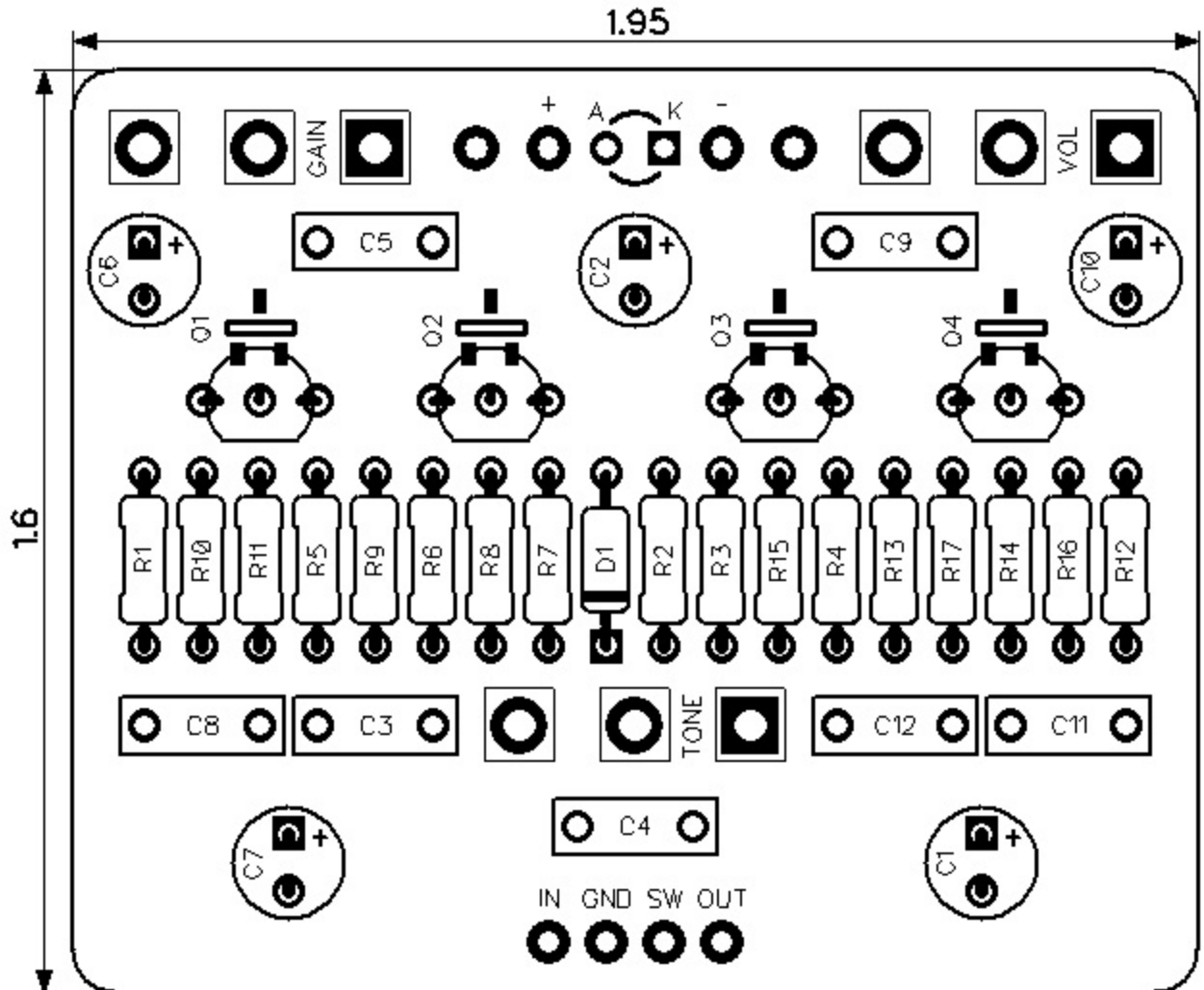


PedalPCB

Six String Stinger

Revised 5/15/21



CONTROLS AND FEATURES

- Volume
- Gain
- Tone

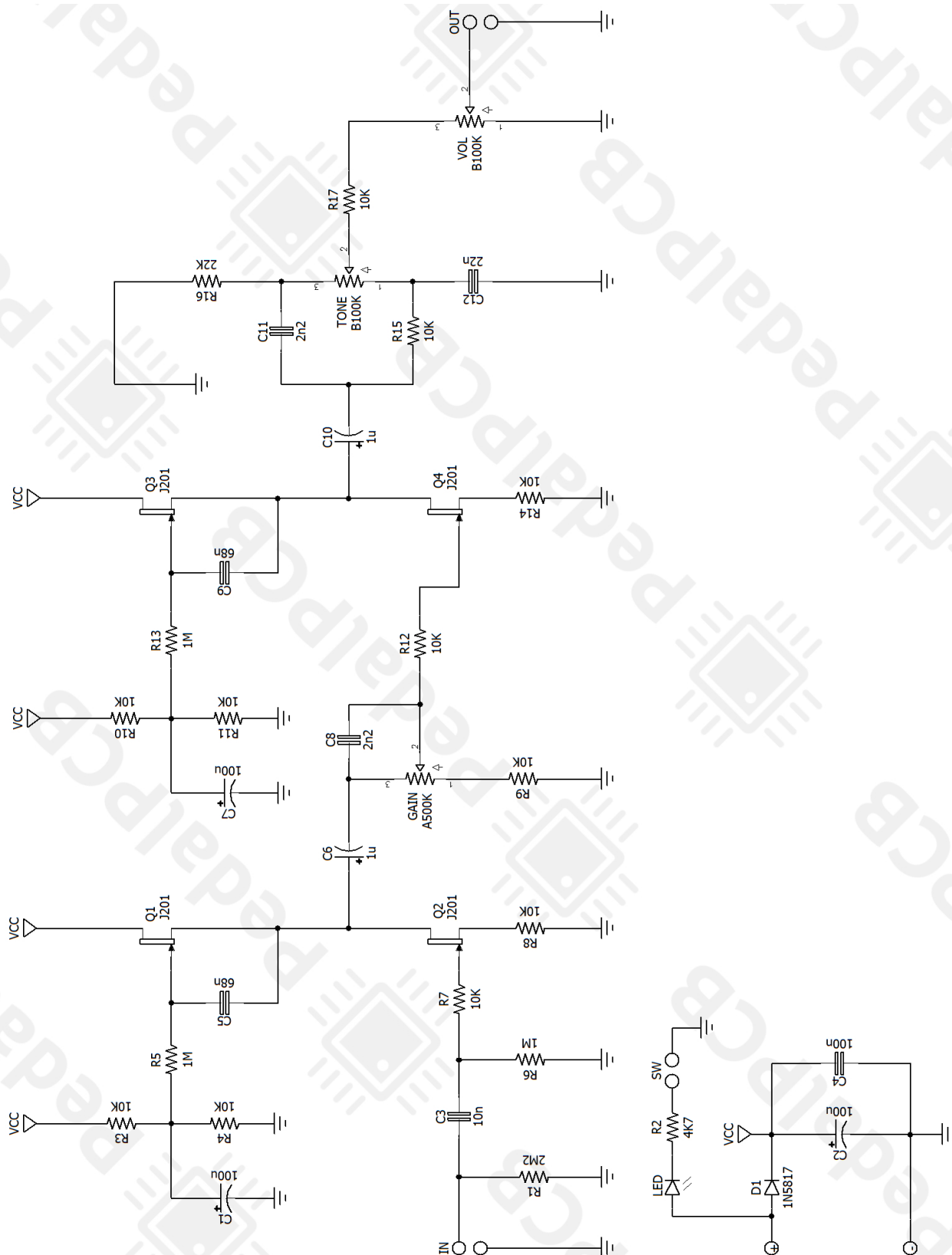
All trademarks and registered trademarks are the property of their respective owners. The company, product, and service names used in this web site are for identification purposes only. Use of these names, logos, and brands does not imply endorsement.

LOCATION	VALUE	TYPE	NOTES
R1	2M2	Resistor, 1/4W	
R2	4K7	Resistor, 1/4W	
R3	10K	Resistor, 1/4W	
R4	10K	Resistor, 1/4W	
R5	1M	Resistor, 1/4W	
R6	1M	Resistor, 1/4W	
R7	10K	Resistor, 1/4W	
R8	10K	Resistor, 1/4W	
R9	10K	Resistor, 1/4W	
R10	10K	Resistor, 1/4W	
R11	10K	Resistor, 1/4W	
R12	10K	Resistor, 1/4W	
R13	1M	Resistor, 1/4W	
R14	10K	Resistor, 1/4W	
R15	10K	Resistor, 1/4W	
R16	22K	Resistor, 1/4W	
R17	10K	Resistor, 1/4W	
C1	100u	Electrolytic capacitor, 5mm	
C2	100u	Electrolytic capacitor, 5mm	
C3	10n	Film capacitor, 7.2 x 2.5mm	
C4	100n	Film capacitor, 7.2 x 2.5mm	
C5	68n	Film capacitor, 7.2 x 2.5mm	
C6	1u	Electrolytic capacitor, 5mm	
C7	100u	Electrolytic capacitor, 5mm	
C8	2n2	Film capacitor, 7.2 x 2.5mm	
C9	68n	Film capacitor, 7.2 x 2.5mm	
C10	1u	Electrolytic capacitor, 5mm	
C11	2n2	Film capacitor, 7.2 x 2.5mm	
C12	22n	Film capacitor, 7.2 x 2.5mm	
D1	1N5817	Schottky diode, DO-41	
Q1	J201	JFET transistor, N-channel	
Q2	J201	JFET transistor, N-channel	
Q3	J201	JFET transistor, N-channel	
Q4	J201	JFET transistor, N-channel	
VOL	B100K	16mm right-angle PCB mount pot	
TONE	B100K	16mm right-angle PCB mount pot	
GAIN	A500K	16mm right-angle PCB mount pot	



Six String Stinger

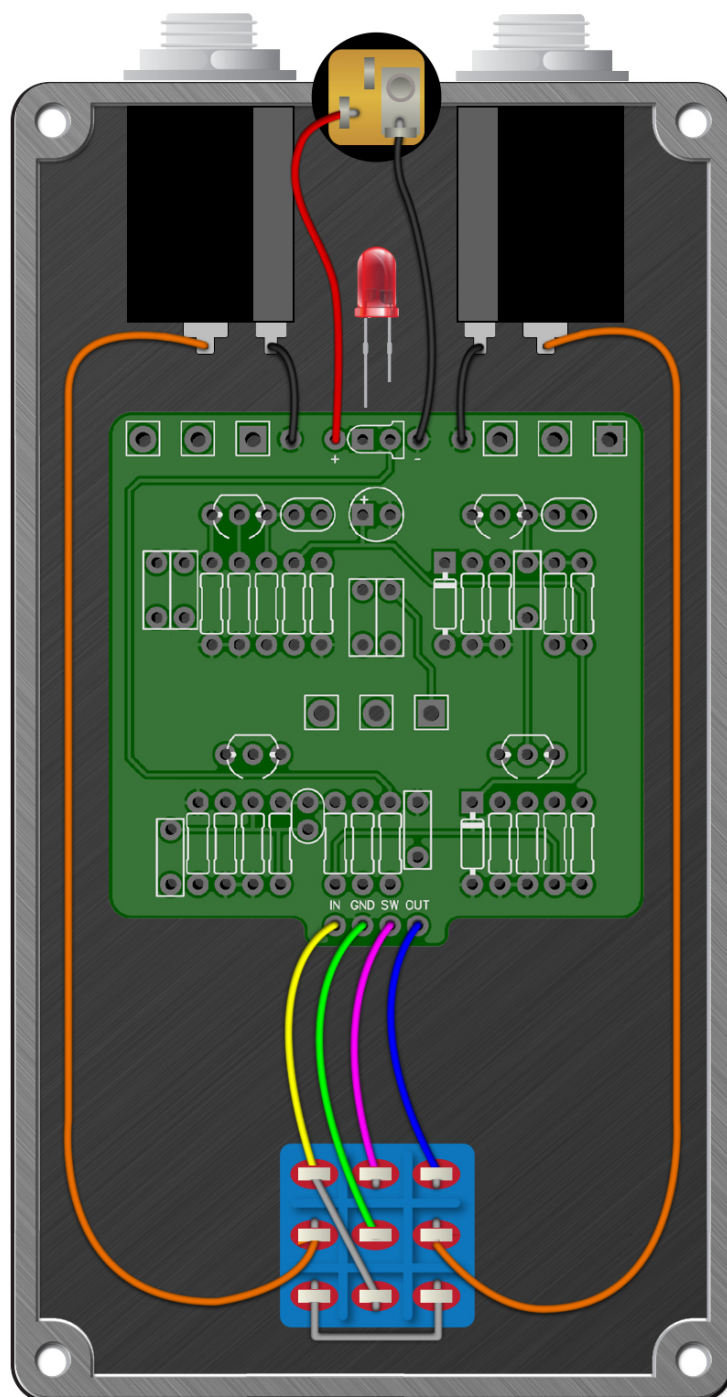
Schematic Diagram





Six String Stinger

Wiring Diagram



Six String Stinger

Drill Template
125B Enclosure

