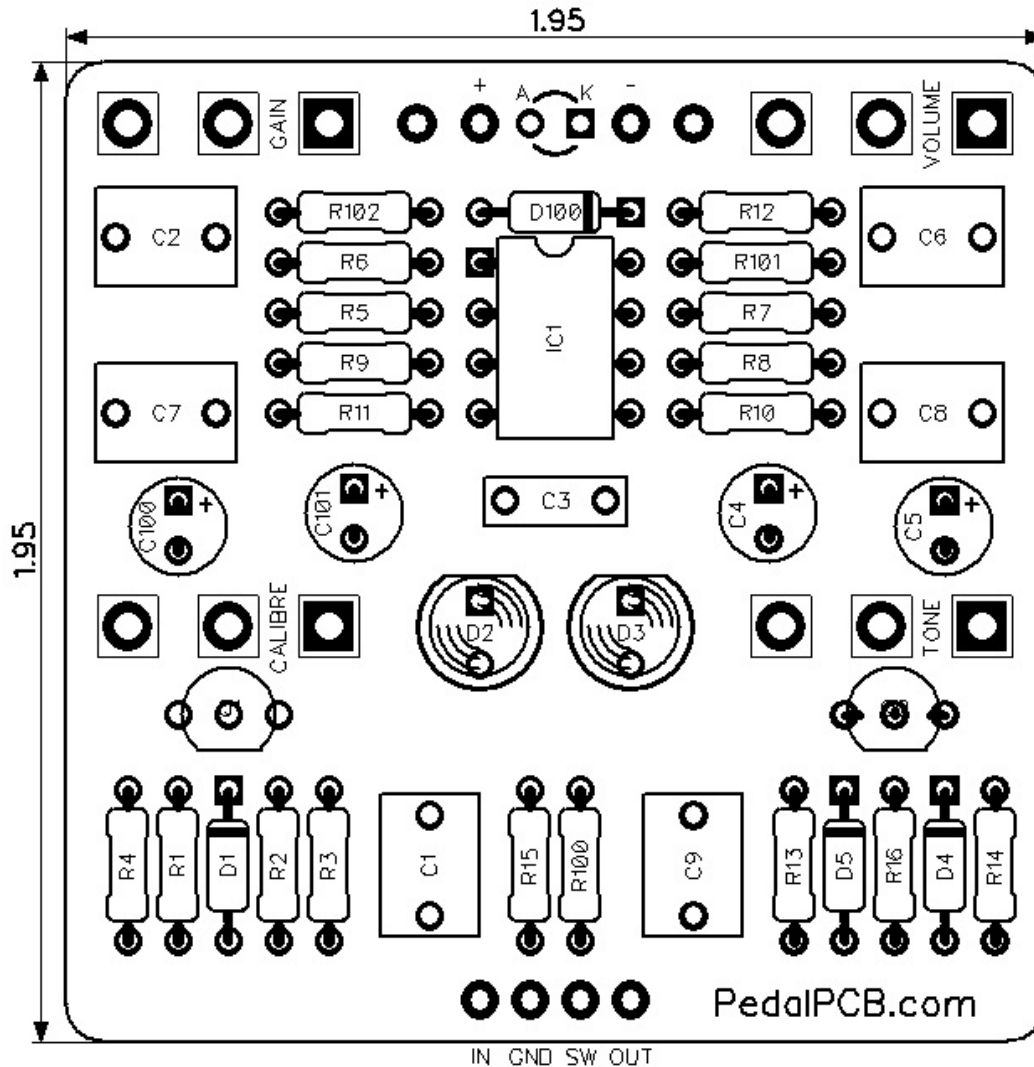


PedalPCB

Shrapnel Overdrive

Revised 9/13/25



CONTROLS AND FEATURES

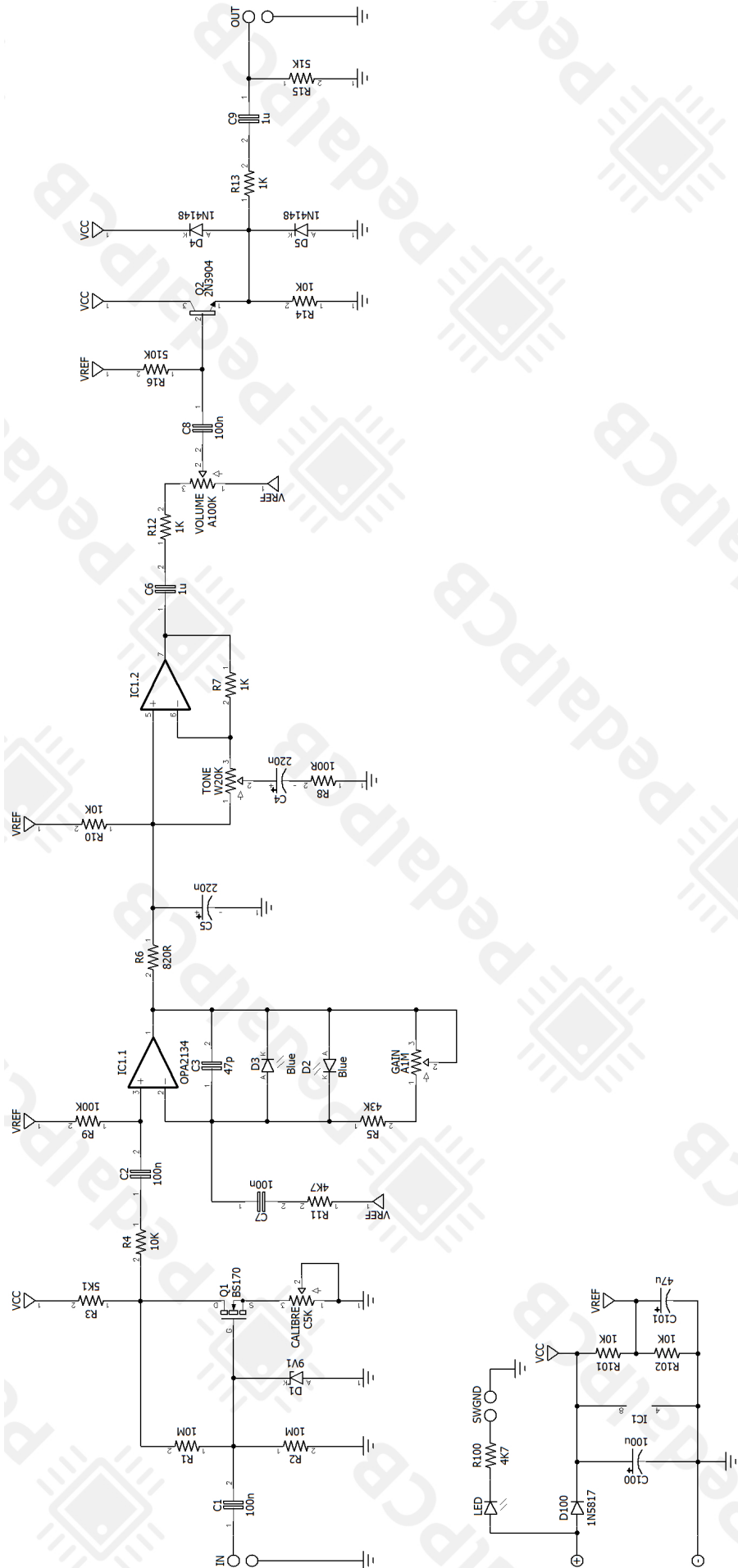
- Volume
- Gain
- Tone
- Calibre

All trademarks and registered trademarks are the property of their respective owners. The company, product, and service names used in this web site are for identification purposes only. Use of these names, logos, and brands does not imply endorsement.

LOCATION	VALUE	TYPE	NOTES
R1	10M	Resistor, 1/4W	
R2	10M	Resistor, 1/4W	
R3	5K1	Resistor, 1/4W	
R4	10K	Resistor, 1/4W	
R5	43K	Resistor, 1/4W	
R6	820R	Resistor, 1/4W	
R7	1K	Resistor, 1/4W	
R8	100R	Resistor, 1/4W	
R9	100K	Resistor, 1/4W	
R10	10K	Resistor, 1/4W	
R11	4K7	Resistor, 1/4W	
R12	1K	Resistor, 1/4W	
R13	1K	Resistor, 1/4W	
R14	10K	Resistor, 1/4W	
R15	51K	Resistor, 1/4W	
R16	510K	Resistor, 1/4W	
R100	4K7	Resistor, 1/4W	
R101	10K	Resistor, 1/4W	
R102	10K	Resistor, 1/4W	
C1	100n	Film capacitor, 7.2 x 2.5mm	
C2	100n	Film capacitor, 7.2 x 2.5mm	
C3	47p	Ceramic capacitor	
C4	220n (0.22uF)	Tantalum capacitor	
C5	220n (0.22uF)	Tantalum capacitor	
C6	1u	Film capacitor, 7.2 x 5.0mm	
C7	100n	Film capacitor, 7.2 x 2.5mm	
C8	100n	Film capacitor, 7.2 x 2.5mm	
C9	1u	Film capacitor, 7.2 x 5.0mm	
C100	100u	Electrolytic capacitor, 5mm	
C101	47u	Electrolytic capacitor, 5mm	
D1	9V1	Zener diode 1/2W, 9.1V	
D2	Blue	5mm Blue LED	
D3	Blue	5mm Blue LED	
D4	1N4148	Signal diode, DO-35	
D5	1N4148	Signal diode, DO-35	
D100	1N5817	Schottky diode, DO-41	
Q1	BS170	N-Channel MOSFET	
Q2	2N3904	BJT transistor, NPN TO-92	
IC1	OPA2134	Dual op-amp, DIP8	
VOLUME	A100K	16mm right-angle PCB mount pot	
GAIN	A1M	16mm right-angle PCB mount pot	
TONE	W20K	16mm right-angle PCB mount pot	
CALIBRE	C5K	16mm right-angle PCB mount pot	

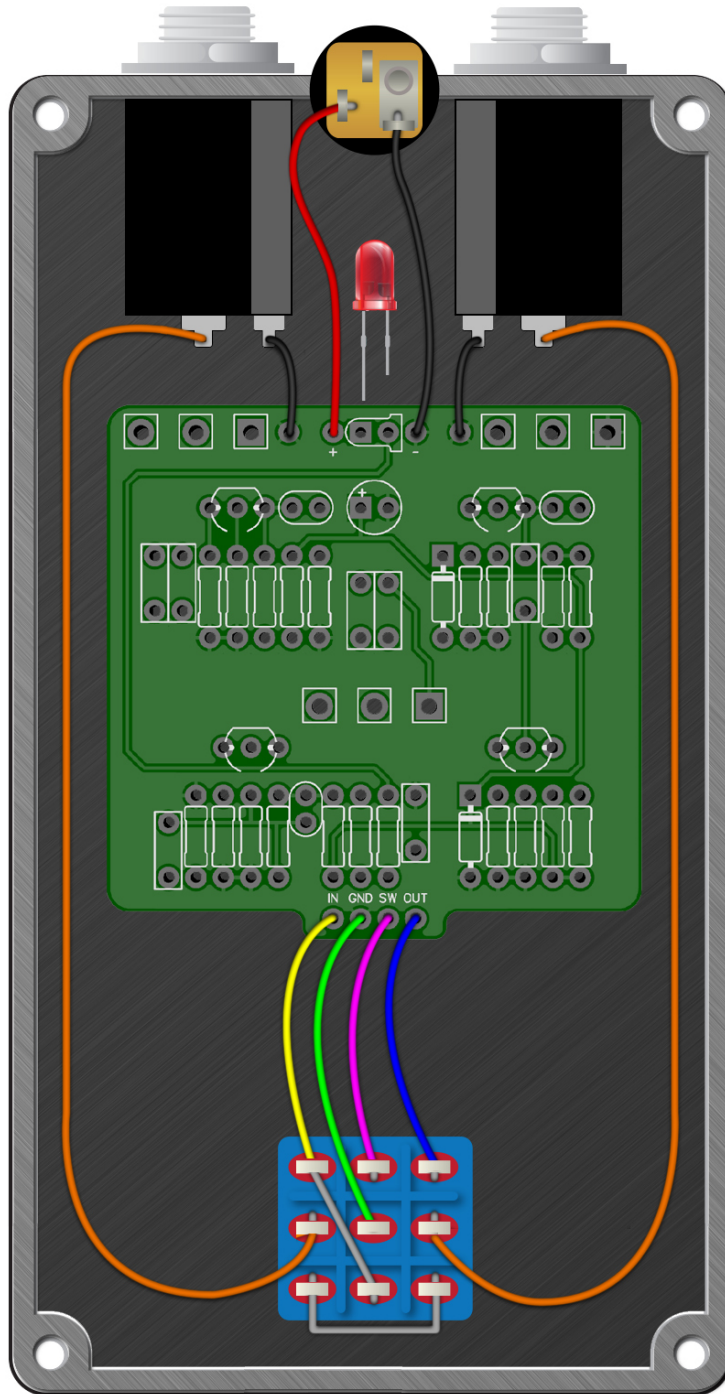
Shrapnel Overdrive

Schematic Diagram



Shrapnel Overdrive

Wiring Diagram



Shrapnel Overdrive

Drill Template
125B Enclosure

