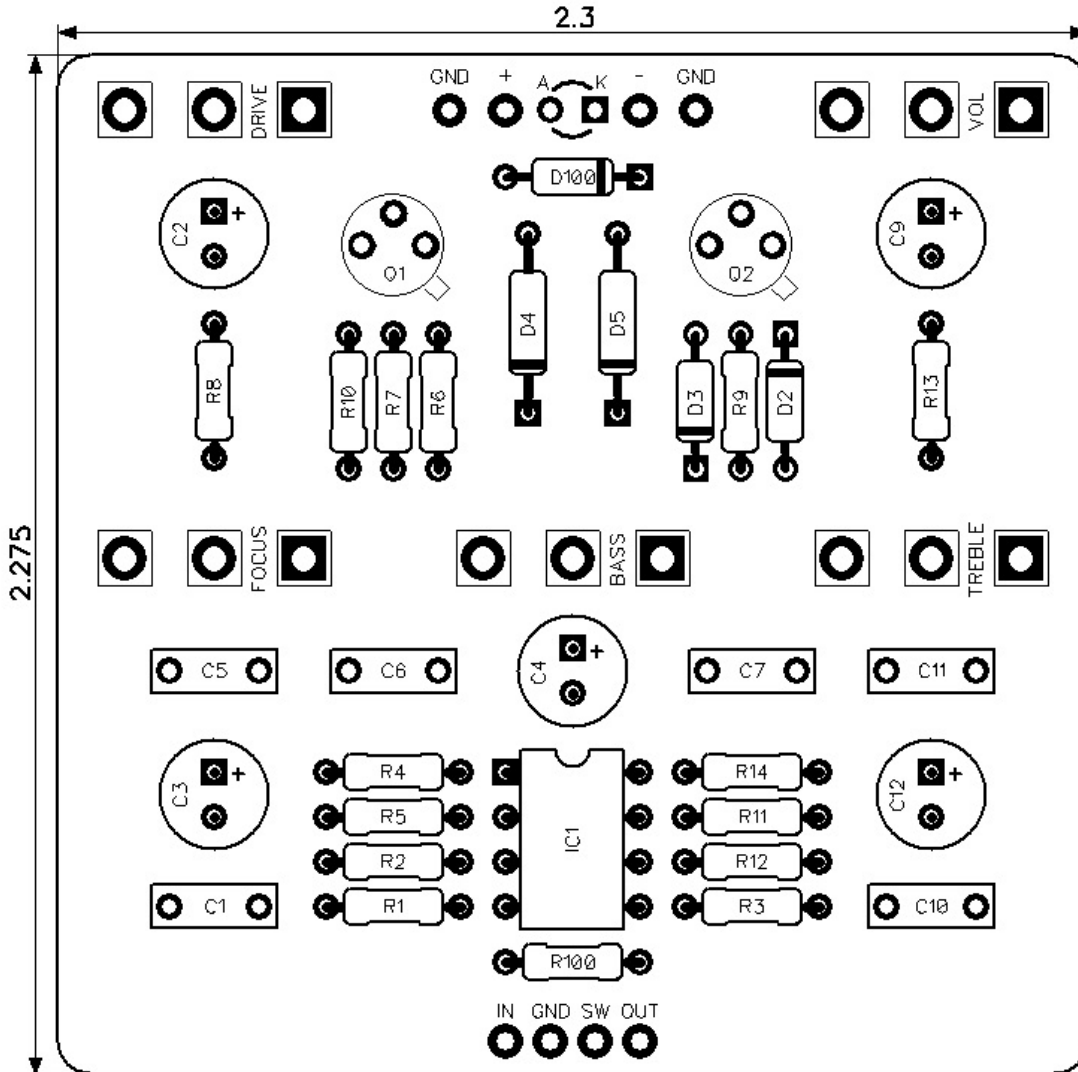


# PedalPCB

## Seashore Overdrive

Revised 4/5/22



### CONTROLS AND FEATURES

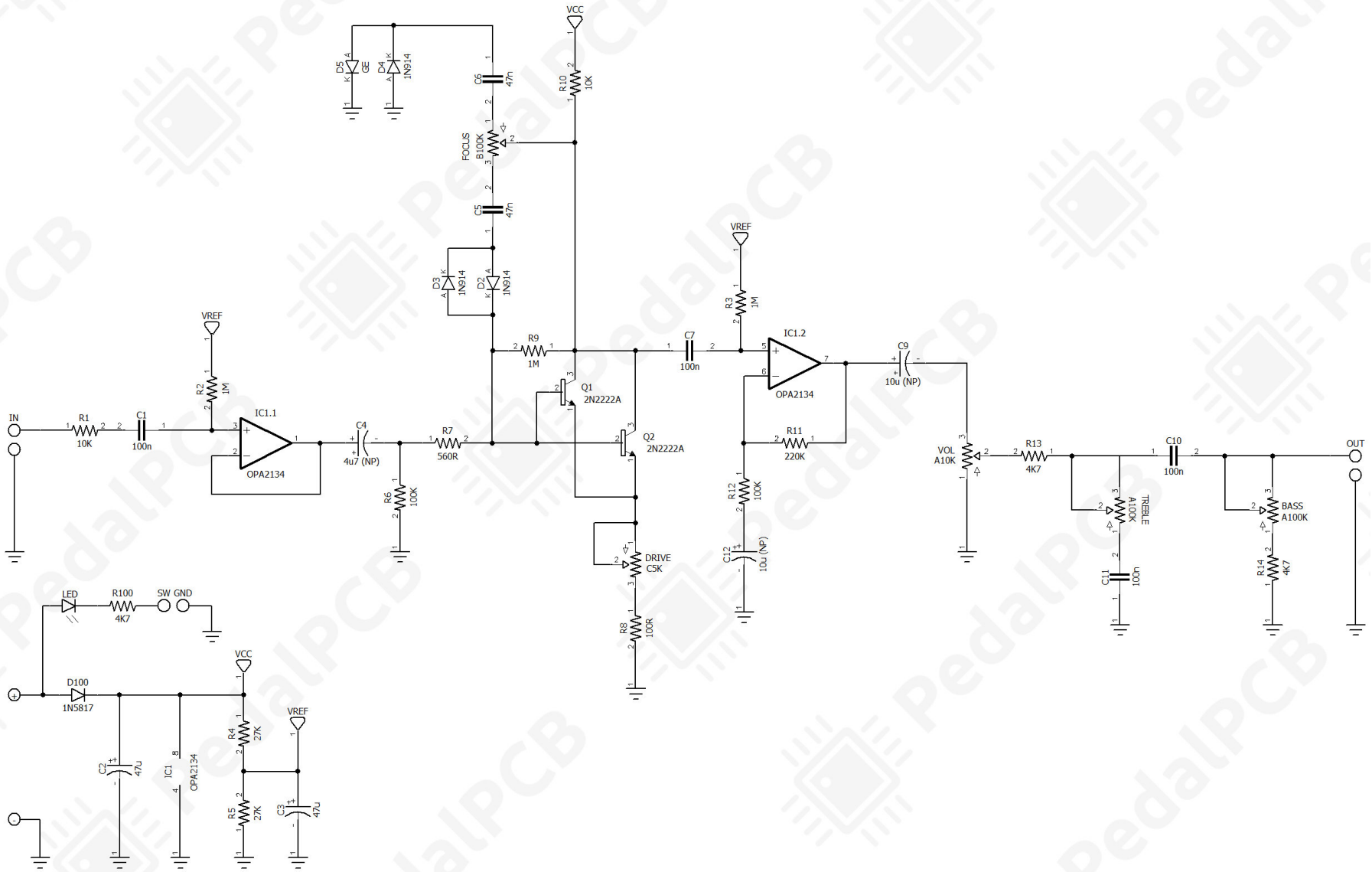
- Volume
- Drive
- Treble
- Bass
- Focus

All trademarks and registered trademarks are the property of their respective owners. The company, product, and service names used in this web site are for identification purposes only. Use of these names, logos, and brands does not imply endorsement.

LOCATION	VALUE	TYPE	NOTES
R1	10K	Resistor, 1/4W	
R2	1M	Resistor, 1/4W	
R3	1M	Resistor, 1/4W	
R4	27K	Resistor, 1/4W	
R5	27K	Resistor, 1/4W	
R6	100K	Resistor, 1/4W	
R7	560R	Resistor, 1/4W	
R8	100R	Resistor, 1/4W	
R9	1M	Resistor, 1/4W	
R10	10K	Resistor, 1/4W	
R11	220K	Resistor, 1/4W	
R12	100K	Resistor, 1/4W	
R13	4K7	Resistor, 1/4W	
R14	4K7	Resistor, 1/4W	
R100	4K7	Resistor, 1/4W	
C1	100n	Film capacitor, 7.2 x 2.5mm	
C2	47u	Electrolytic capacitor, 5mm	
C3	47u	Electrolytic capacitor, 5mm	
C4	4u7 (NP)	Electrolytic capacitor, 5mm	* Non-polarized
C5	47n	Film capacitor, 7.2 x 2.5mm	
C6	47n	Film capacitor, 7.2 x 2.5mm	
C7	100n	Film capacitor, 7.2 x 2.5mm	
C9	10u (NP)	Electrolytic capacitor, 5mm	* Non-polarized
C10	100n	Film capacitor, 7.2 x 2.5mm	
C11	100n	Film capacitor, 7.2 x 2.5mm	
C12	10u (NP)	Electrolytic capacitor, 5mm	* Non-polarized
D2	1N914	Signal diode, DO-35	
D3	1N914	Signal diode, DO-35	
D4	1N914	Signal diode, DO-35	
D5	GE	Germanium diode	
D100	1N5817	Schottky diode, DO-41	
Q1	2N2222A	BJT transistor, NPN TO-18	
Q2	2N2222A	BJT transistor, NPN TO-18	
IC1	OPA2134	Dual op-amp, DIP8	
VOL	A10K	16mm right-angle PCB mount pot	
DRIVE	C5K	16mm right-angle PCB mount pot	
TREBLE	A100K	16mm right-angle PCB mount pot	
BASS	A100K	16mm right-angle PCB mount pot	
FOCUS	B100K	16mm right-angle PCB mount pot	

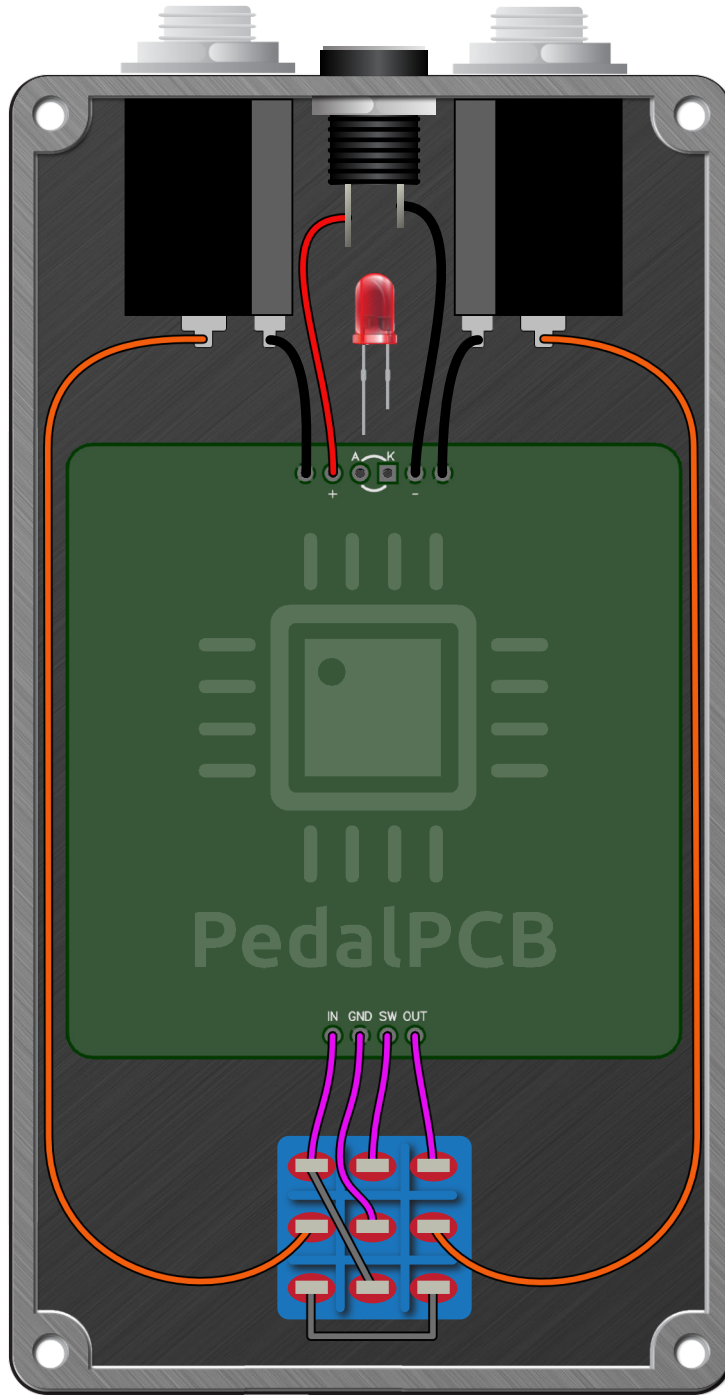
# Seashore Overdrive

## Schematic Diagram



# Seashore Overdrive

Wiring Diagram



# Seashore Overdrive

Drill Template  
125B Enclosure

