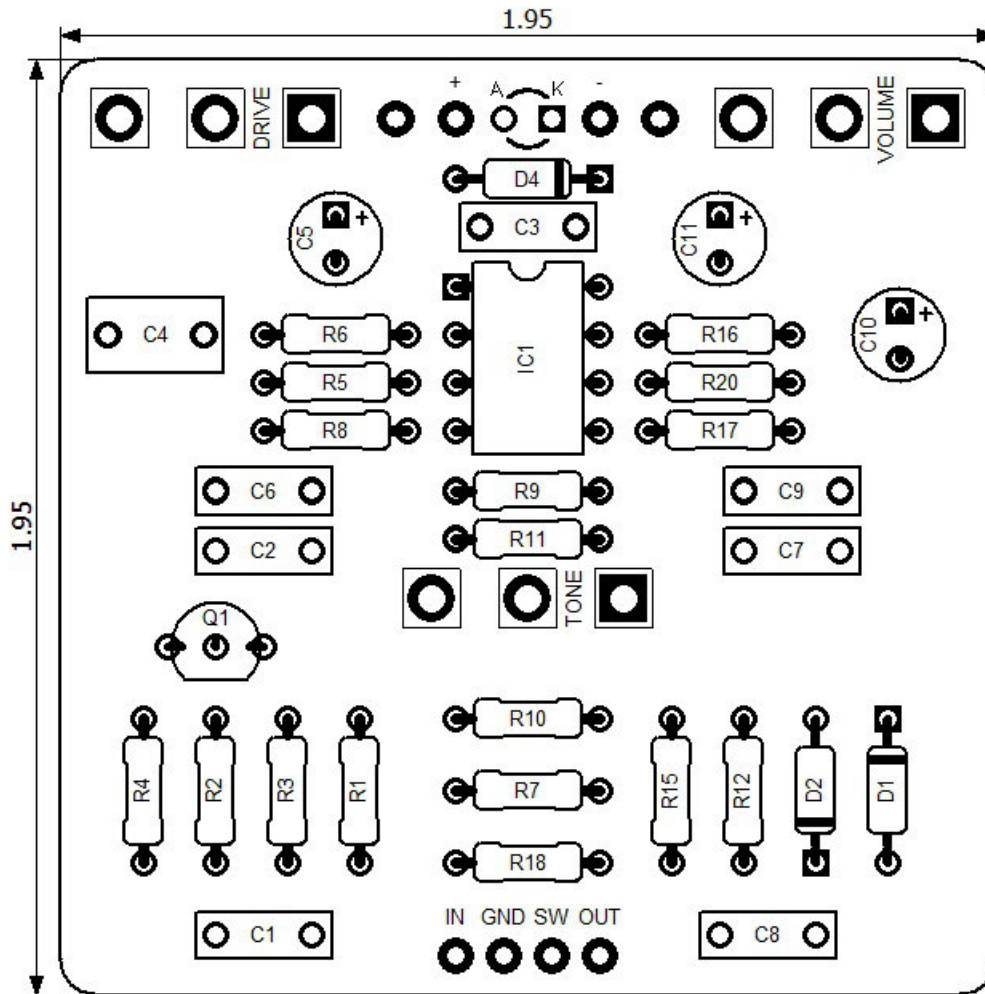


## Saturnine Distortion

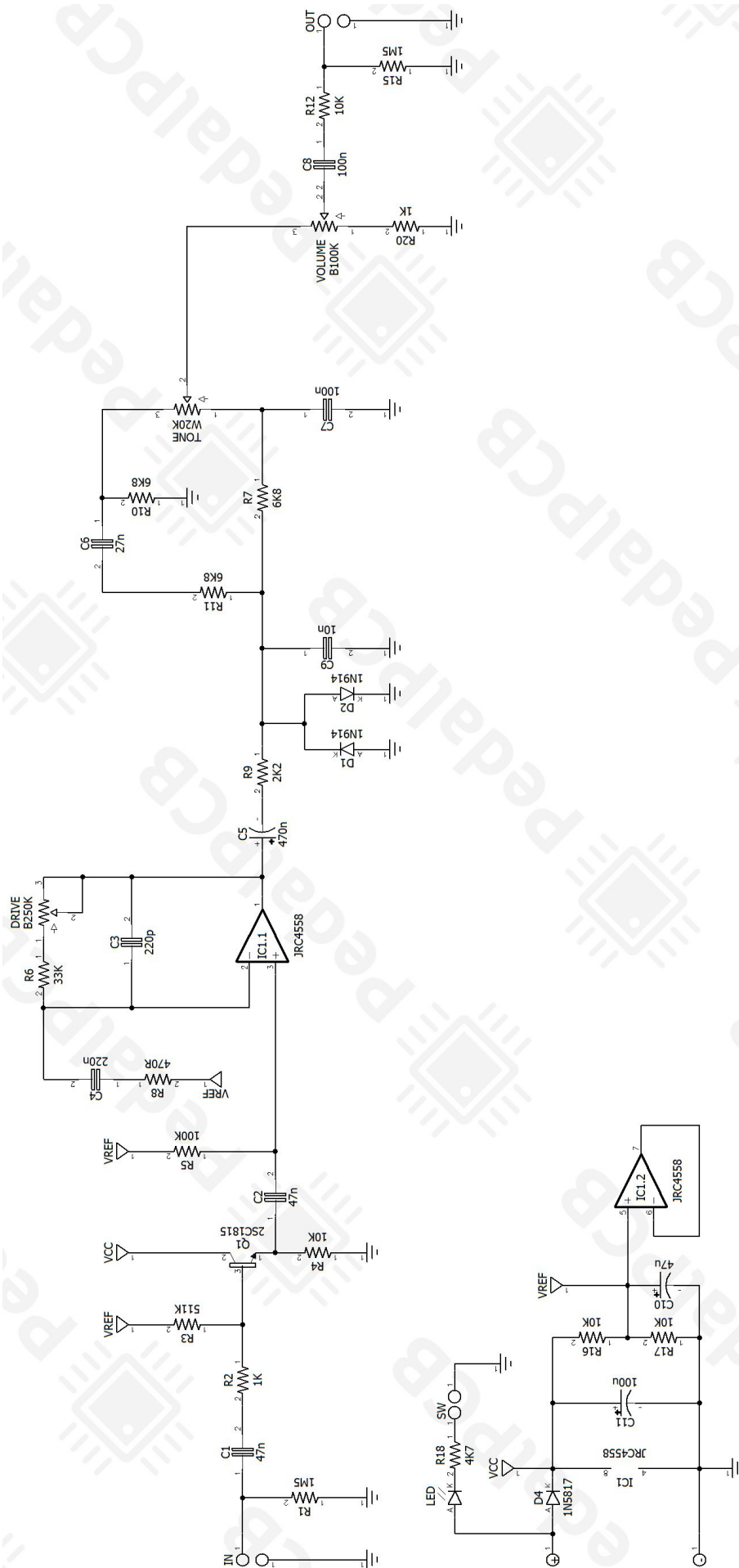
Revised 2/13/22



### CONTROLS AND FEATURES

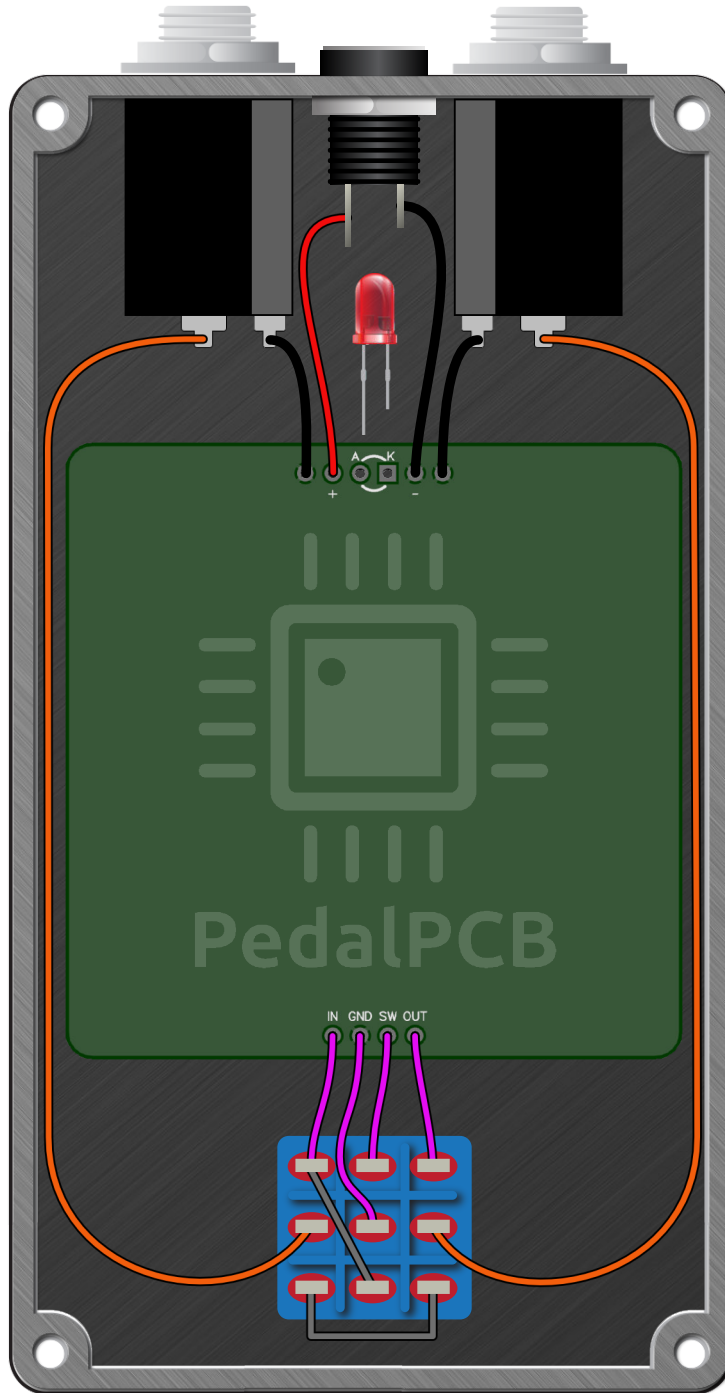
- Volume
- Tone
- Drive

LOCATION	VALUE	TYPE	NOTES
R1	1M5	Resistor, 1/4W	
R2	1K	Resistor, 1/4W	
R3	511K	Resistor, 1/4W	
R4	10K	Resistor, 1/4W	
R5	100K	Resistor, 1/4W	
R6	33K	Resistor, 1/4W	
R7	6K8	Resistor, 1/4W	
R8	470R	Resistor, 1/4W	
R9	2K2	Resistor, 1/4W	
R10	6K8	Resistor, 1/4W	
R11	6K8	Resistor, 1/4W	
R12	10K	Resistor, 1/4W	
R15	1M5	Resistor, 1/4W	
R16	10K	Resistor, 1/4W	
R17	10K	Resistor, 1/4W	
R18	4K7	Resistor, 1/4W	
R20	1K	Resistor, 1/4W	
C1	47n	Film capacitor, 7.2 x 2.5mm	
C2	47n	Film capacitor, 7.2 x 2.5mm	
C3	220p	Ceramic capacitor	
C4	220n	Film capacitor, 7.2 x 5.0mm	
C5	470n	Electrolytic capacitor, 5mm	
C6	27n	Film capacitor, 7.2 x 2.5mm	
C7	100n	Film capacitor, 7.2 x 2.5mm	
C8	100n	Film capacitor, 7.2 x 2.5mm	
C9	10n	Film capacitor, 7.2 x 2.5mm	
C10	47u	Electrolytic capacitor, 5mm	
C11	100u	Electrolytic capacitor, 5mm	
D1	1N914	Signal diode, DO-35	
D2	1N914	Signal diode, DO-35	
D4	1N5817	Schottky diode, DO-41	
Q1	2SC1815	BJT transistor, NPN TO-92	
IC1	JRC4558	Dual op-amp, DIP8	
VOLUME	B100K	16mm right-angle PCB mount pot	
TONE	W20K	16mm right-angle PCB mount pot	
DRIVE	B250K	16mm right-angle PCB mount pot	



# Saturnine Distortion

Wiring Diagram



# Saturnine Distortion

Drill Template  
125B Enclosure

