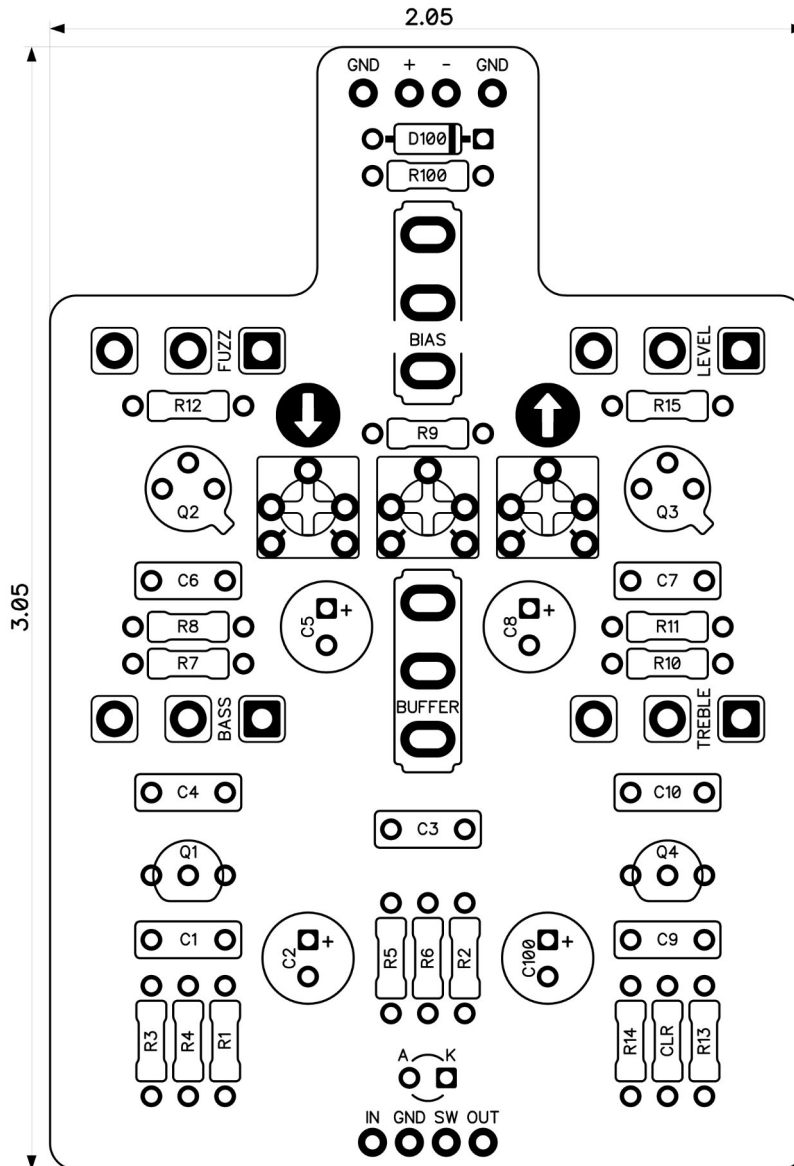


# PedalPCB

## Sandblaster Fuzz

Revised 4/15/24



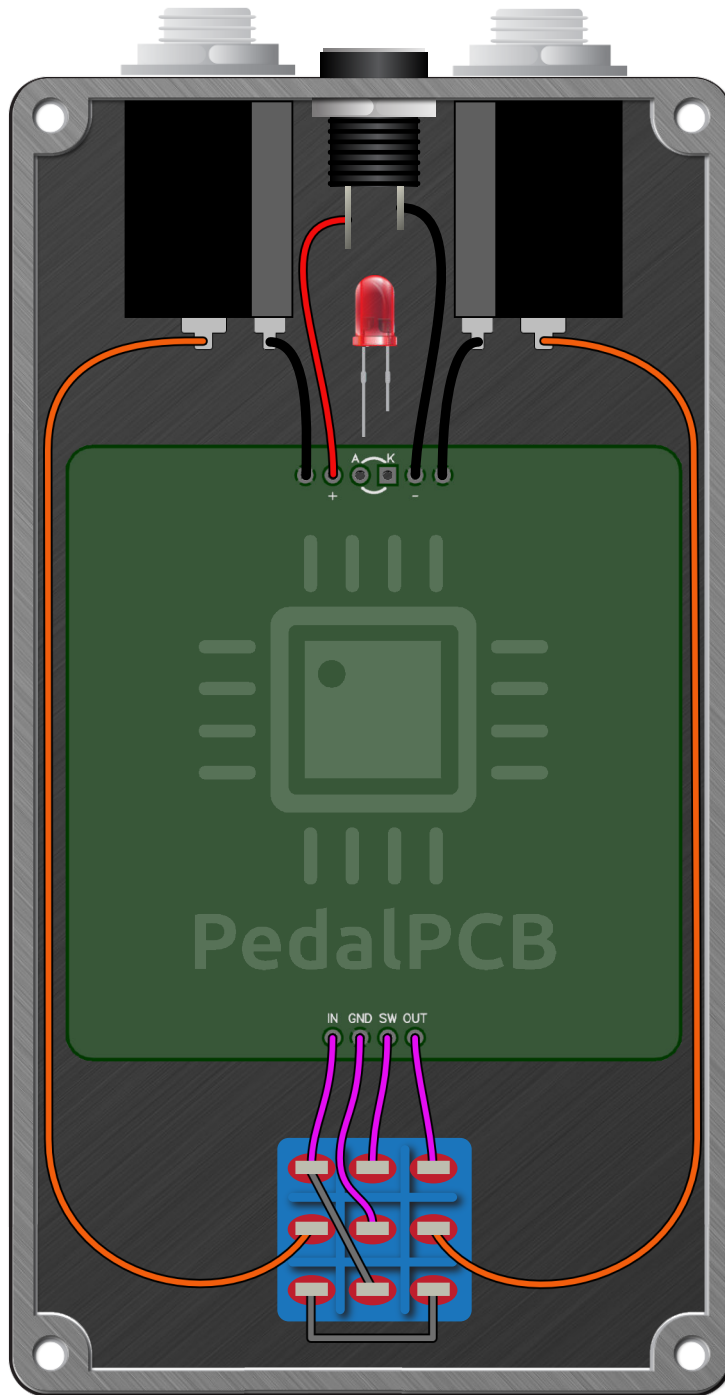
### CONTROLS AND FEATURES

- Level
- Fuzz
- Treble
- Bass
- Bias (Toggle switch)
- Buffer (Toggle switch)

All trademarks and registered trademarks are the property of their respective owners. The company, product, and service names used in this web site are for identification purposes only. Use of these names, logos, and brands does not imply endorsement.

LOCATION	VALUE	TYPE	NOTES
R1	47K	Resistor, 1/4W	
R2	1M	Resistor, 1/4W	
R3	1M	Resistor, 1/4W	
R4	1M	Resistor, 1/4W	
R5	10K	Resistor, 1/4W	
R6	15K	Resistor, 1/4W	
R7	2K2	Resistor, 1/4W	
R8	100K	Resistor, 1/4W	
R9	22K	Resistor, 1/4W	
R10	47K	Resistor, 1/4W	
R11	1K	Resistor, 1/4W	
R12	100R	Resistor, 1/4W	
R13	10K	Resistor, 1/4W	
R14	1K	Resistor, 1/4W	
R15	100K	Resistor, 1/4W	
R100	51R	Resistor, 1/4W	
CLR	4K7	Resistor, 1/4W	* LED current limiting resistor
C1	100n	Film capacitor, 7.2 x 2.5mm	
C2	10u	Electrolytic capacitor, 5mm	
C3	6n8	Film capacitor, 7.2 x 5.0mm	
C4	4n7	Film capacitor, 7.2 x 2.5mm	
C5	2u2	Electrolytic capacitor, 5mm	
C6	47p	Ceramic capacitor	
C7	220p	Ceramic capacitor	
C8	22u	Electrolytic capacitor, 5mm	
C9	100n	Film capacitor, 7.2 x 2.5mm	
C10	15n	Film capacitor, 7.2 x 2.5mm	
C100	100u	Electrolytic capacitor, 5mm	
D100	1N5817	Schottky diode, DO-41	
Q1	BC182B	BJT transistor, NPN TO-92	
Q2	BC107A	BJT transistor, NPN TO-92	hFE=147 at Ic=5.02mA
Q3	2N3053	BJT transistor, NPN TO-39	hFE=175 at Ic=5.00mA
Q4	BC182B	BJT transistor, NPN TO-92	
TOP	20K	Trimmer potentiometer, 3362P type	
MIDDLE	20K	Trimmer potentiometer, 3362P type	
BOTTOM	20K	Trimmer potentiometer, 3362P type	
LEVEL	A100K	16mm right-angle PCB mount pot	
FUZZ	C1K	16mm right-angle PCB mount pot	
TREBLE	B10K	16mm right-angle PCB mount pot	
BASS	B100K	16mm right-angle PCB mount pot	
BIAS	ON/OFF/ON	Toggle switch, SPDT	3-position (ON/OFF/ON)
BUFFER	ON/ON	Toggle switch, SPDT	2-position (ON/ON)





# Sandblaster Fuzz

Drill Template  
125B Enclosure

