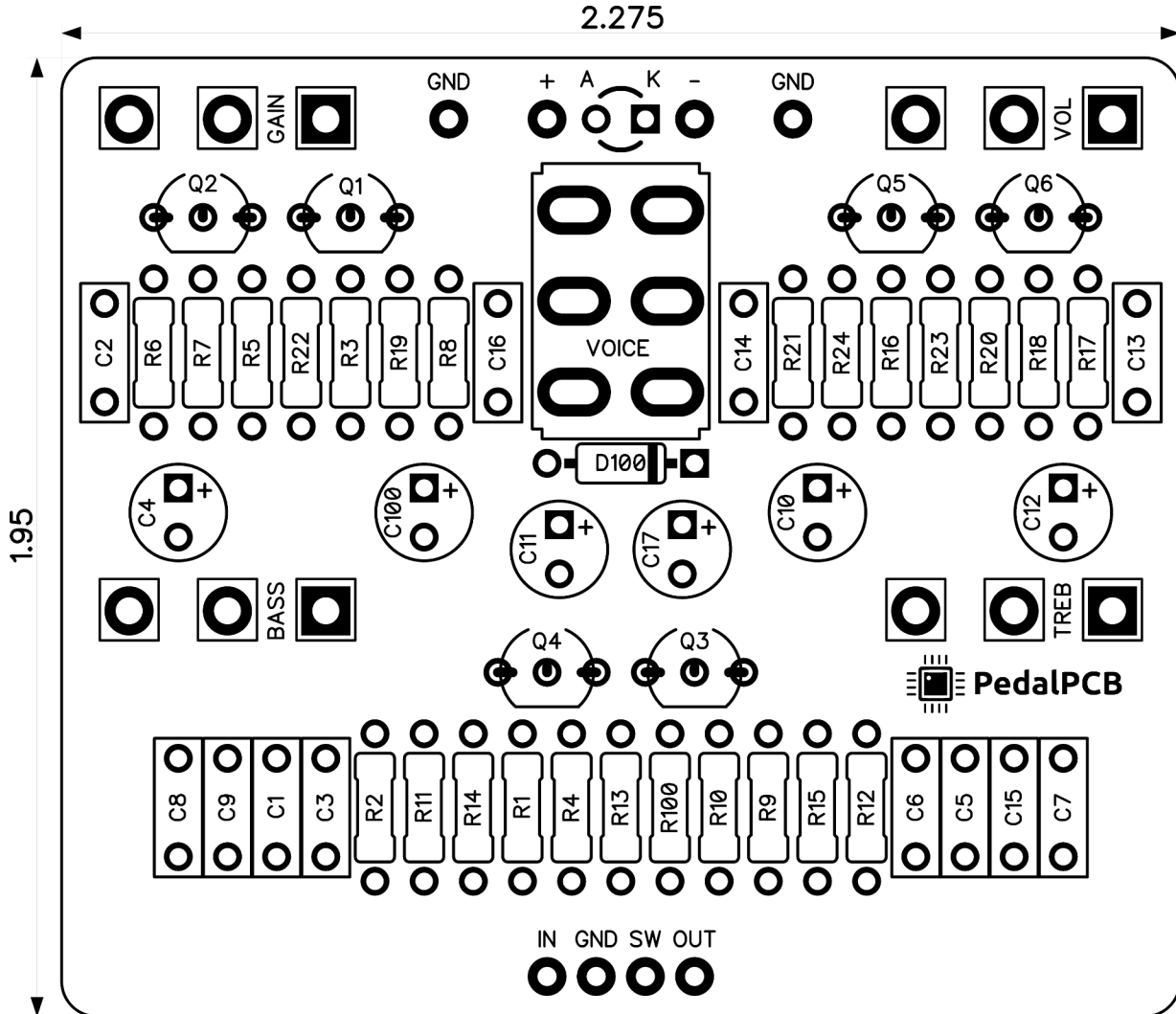


PedalPCB

SOFTii Overdrive

Revised 8/13/23



CONTROLS AND FEATURES

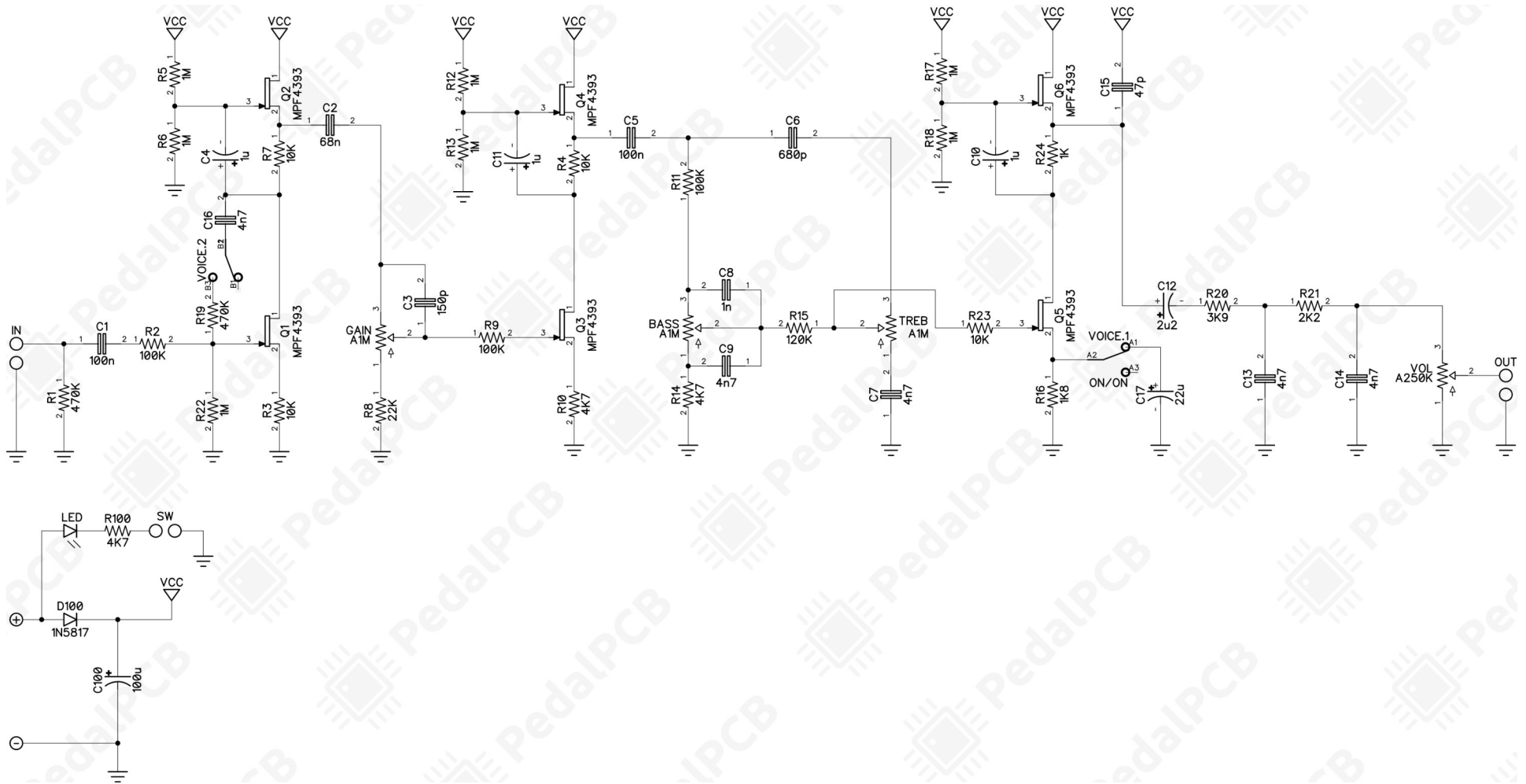
- Volume
- Gain
- Treble
- Bass
- Voice (Toggle switch)

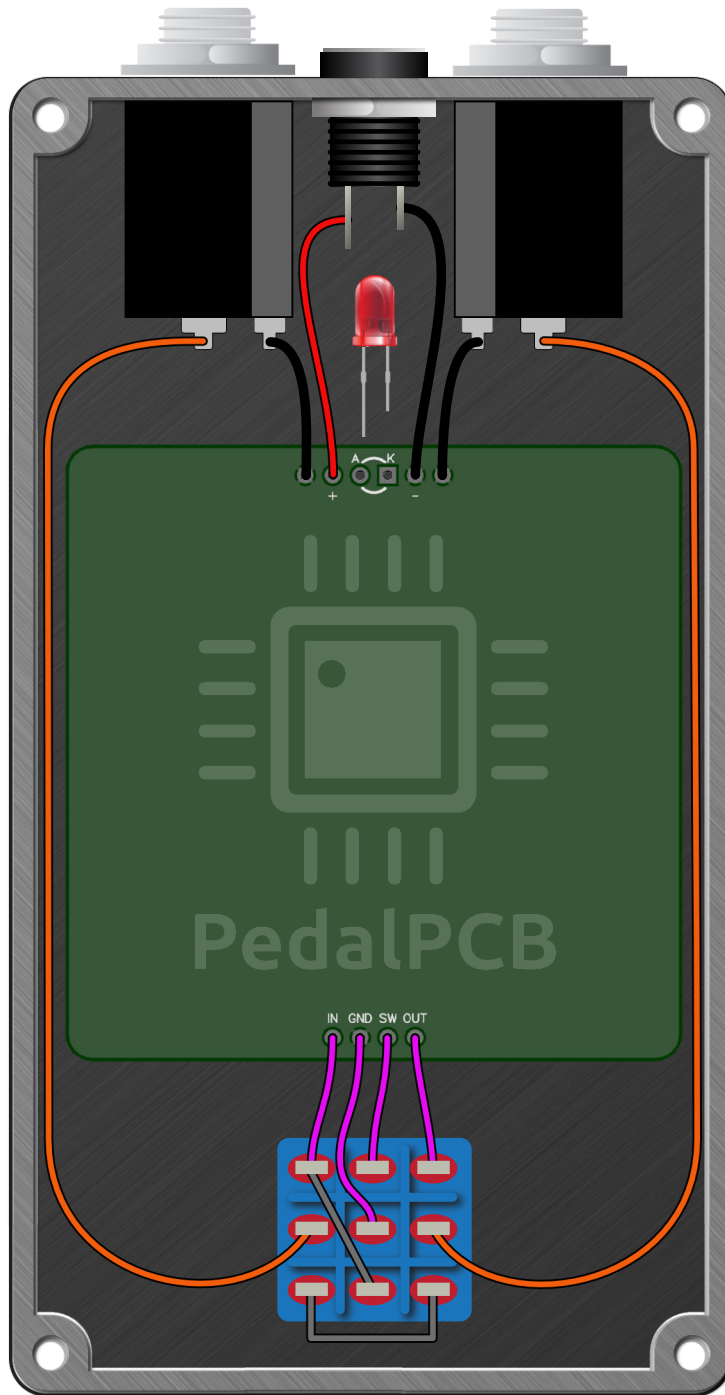
All trademarks and registered trademarks are the property of their respective owners. The company, product, and service names used in this web site are for identification purposes only. Use of these names, logos, and brands does not imply endorsement.

LOCATION	VALUE	TYPE	NOTES
R1	470K	Resistor, 1/4W	
R2	100K	Resistor, 1/4W	
R3	10K	Resistor, 1/4W	
R4	10K	Resistor, 1/4W	
R5	1M	Resistor, 1/4W	
R6	1M	Resistor, 1/4W	
R7	10K	Resistor, 1/4W	
R8	22K	Resistor, 1/4W	
R9	100K	Resistor, 1/4W	
R10	4K7	Resistor, 1/4W	
R11	100K	Resistor, 1/4W	
R12	1M	Resistor, 1/4W	
R13	1M	Resistor, 1/4W	
R14	4K7	Resistor, 1/4W	
R15	120K	Resistor, 1/4W	
R16	1K8	Resistor, 1/4W	
R17	1M	Resistor, 1/4W	
R18	1M	Resistor, 1/4W	
R19	470K	Resistor, 1/4W	
R20	3K9	Resistor, 1/4W	
R21	2K2	Resistor, 1/4W	
R22	1M	Resistor, 1/4W	
R23	10K	Resistor, 1/4W	
R24	1K	Resistor, 1/4W	
R100	4K7	Resistor, 1/4W	* LED current limiting resistor
C1	100n	Film capacitor, 7.2 x 2.5mm	
C2	68n	Film capacitor, 7.2 x 2.5mm	
C3	150p	Ceramic capacitor	
C4	1u	Electrolytic capacitor, 5mm	
C5	100n	Film capacitor, 7.2 x 2.5mm	
C6	680p	Ceramic capacitor	
C7	4n7	Film capacitor, 7.2 x 2.5mm	
C8	1n	Film capacitor, 7.2 x 2.5mm	
C9	4n7	Film capacitor, 7.2 x 2.5mm	
C10	1u	Electrolytic capacitor, 5mm	
C11	1u	Electrolytic capacitor, 5mm	
C12	2u2	Electrolytic capacitor, 5mm	
C13	4n7	Film capacitor, 7.2 x 2.5mm	
C14	4n7	Film capacitor, 7.2 x 2.5mm	
C15	47p	Ceramic capacitor	
C16	4n7	Film capacitor, 7.2 x 2.5mm	
C17	22u	Electrolytic capacitor, 5mm	
C100	100u	Electrolytic capacitor, 5mm	
D100	1N5817	Schottky diode, DO-41	
		<i>Continued on next page...</i>	

SOFTii Overdrive

Schematic Diagram





SOFTii Overdrive

Drill Template
125B Enclosure

