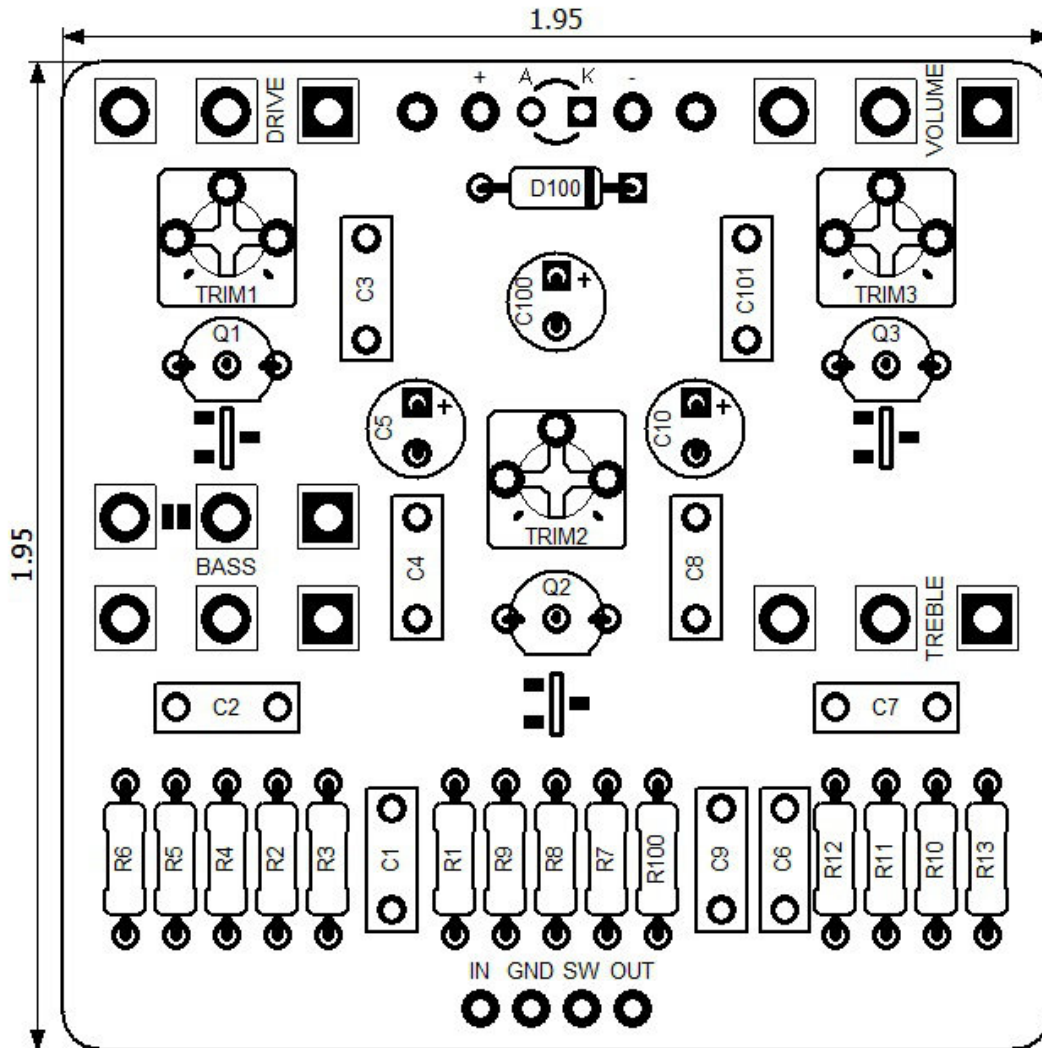


PedalPCB

Son of Ben Preamp

Revised 11/12/24



CONTROLS AND FEATURES

- Volume
- Drive
- Treble
- Bass

All trademarks and registered trademarks are the property of their respective owners. The company, product, and service names used in this web site are for identification purposes only. Use of these names, logos, and brands does not imply endorsement.

LOCATION	VALUE	TYPE	NOTES
R1	1M	Resistor, 1/4W	
R2	220K	Resistor, 1/4W	
R3	1M	Resistor, 1/4W	
R4	1K	Resistor, 1/4W	
R5	10K	Resistor, 1/4W	
R6	470K	Resistor, 1/4W	
R7	470K	Resistor, 1/4W	
R8	1K	Resistor, 1/4W	
R9	10K	Resistor, 1/4W	
R10	100K	Resistor, 1/4W	
R11	1K	Resistor, 1/4W	
R12	10K	Resistor, 1/4W	
R13	47K	Resistor, 1/4W	
R100	4K7	Resistor, 1/4W	
C1	100n	Film capacitor, 7.2 x 2.5mm	
C2	22n	Film capacitor, 7.2 x 2.5mm	
C3	250p	Ceramic capacitor	
C4	470p	Ceramic capacitor	
C5	10u	Electrolytic capacitor, 5mm	
C6	22n	Film capacitor, 7.2 x 2.5mm	
C7	22n	Film capacitor, 7.2 x 2.5mm	
C8	22n	Film capacitor, 7.2 x 2.5mm	
C9	2n2	Film capacitor, 7.2 x 2.5mm	
C10	10u	Electrolytic capacitor, 5mm	*Optional (see Page 3)
C100	100u	Electrolytic capacitor, 5mm	
C101	100n	Film capacitor, 7.2 x 2.5mm	
D100	1N5817	Schottky diode, DO-41	
Q1	J201	JFET transistor, N-channel	*Alternate MMBFJ201 (SMD)
Q2	J201	JFET transistor, N-channel	*Alternate MMBFJ201 (SMD)
Q3	J201	JFET transistor, N-channel	*Alternate MMBFJ201 (SMD)
VOLUME	A100K	16mm right-angle PCB mount pot	
DRIVE	A1M	16mm right-angle PCB mount pot	
TREBLE	A250K	16mm right-angle PCB mount pot	
BASS	***	***	* Refer to Page 3
TRIM1	50K	Trim potentiometer	3362P-style
TRIM2	50K	Trim potentiometer	3362P-style
TRIM3	50K	Trim potentiometer	3362P-style


NOTE

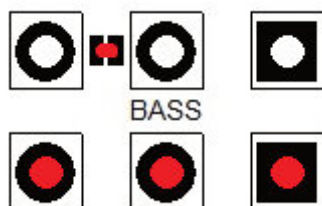
C10 was only populated in the first 100 units.
Newer units omit this capacitor.

Bass Potentiometer

The original **B2M Single-Ganged** potentiometer used for the Bass control isn't a common value and can be difficult to source. Alternatively a **B1M Dual-Ganged** potentiometer can be used.

The Son of Ben Preamp PCB layout is designed to accommodate either part.

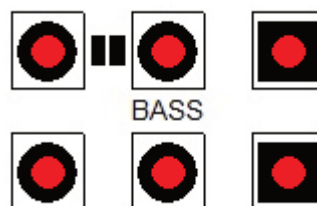
B2M Single-Ganged



When using a **Single-Ganged B2M** potentiometer the solder jumper pads between lugs 2 and 3 of the Bass potentiometer should be bridged with solder.

The potentiometer should be installed into the bottom row of pads.

B1M Dual-Ganged



When using a **Dual-Ganged B1M** potentiometer the solder jumper between lugs 2 and 3 of the Bass potentiometer should be left open.

Capacitor C10 (Optional)



Capacitor C10 was only populated in the first 100 original units. Current production units omit this capacitor.



Son of Ben Preamp

Schematic Diagram

