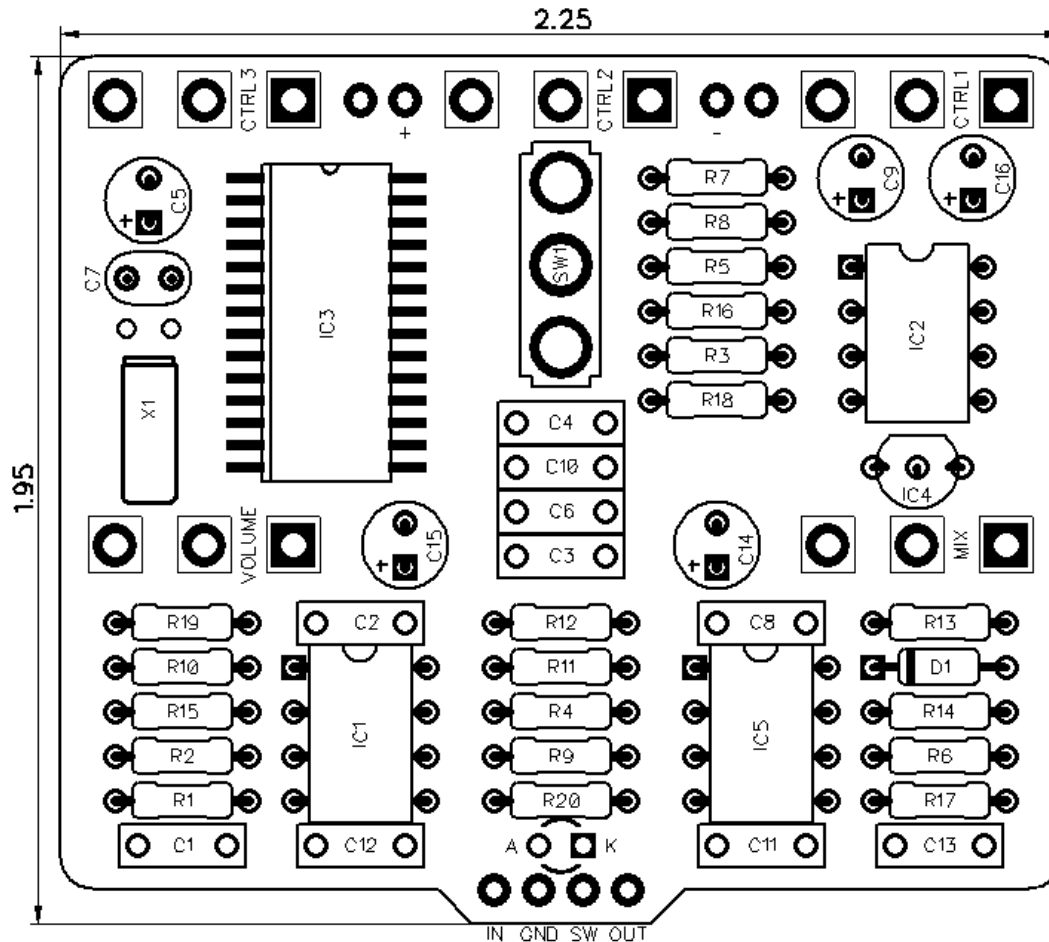


# PedalPCB

## Pythagoras v3

Revision 08.10.20



### Controls

- **Parameter 1**
- **Parameter 2**
- **Parameter 3**
- **Volume**
- **Mix**
- **Mode (Toggle Switch)**

*All trademarks and registered trademarks are the property of their respective owners. The company, product, and service names used in this web site are for identification purposes only. Use of these names, logos, and brands does not imply endorsement.*

**RESISTORS (1/4W)**

R1	1M
R2	1M
R3	1K
R4	15K
R5	10K
R6	100K
R7	10K
R8	100R
R9	15K
R10	15K
R11	22K
R12	100R
R13	4K7
R14	10K
R15	10K
R16	10K
R17	1K
R18	15K
R19	15K
R20	100K

**CAPACITORS**

C1	100n
C2	1u MLCC
C3	1u MLCC
C4	1n
C5	10u
C6	1u MLCC
C7	15p
C8	1u MLCC
C9	1u
C10	1u MLCC
C11	2n2
C12	220p
C13	470p
C14	100u
C15	47u
C16	47u

**CRYSTALS**

X1	AB38T-32.768KHZ Crystal
----	-------------------------

**TOGGLE SWITCH**

SW1	SPDT (On/Off/On)
-----	------------------

*\*SPDT (On/On) for Kaleidoscope / BuGGFX Daydream*

**INTEGRATED CIRCUITS**

IC1	TL072
IC2	24LC32A
IC3	FV1
IC4	L78L33
IC5	TL072

**DIODES**

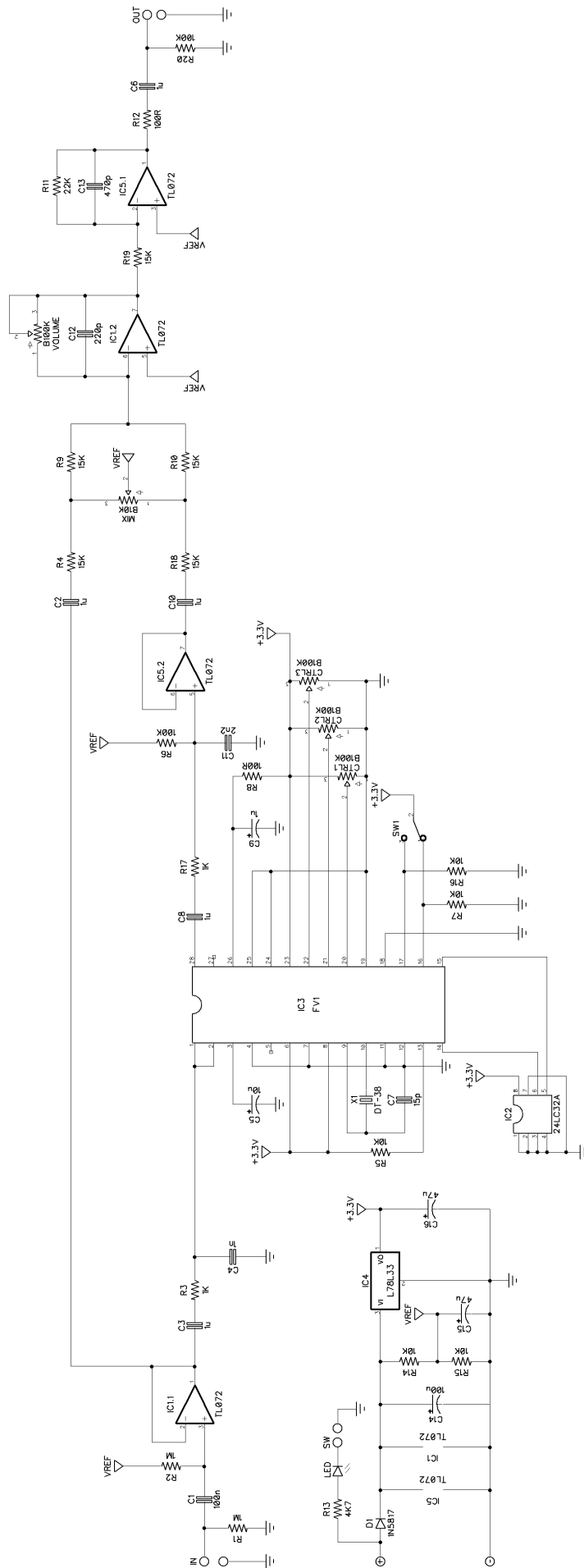
D1	1N5817
----	--------

**POTENTIOMETERS**

CTRL1	B100K
CTRL2	B100K
CTRL3	B100K
MIX	B10K
VOLUME	B100K



# Pythagoras v3





# Pythagoras v3

Drill Template  
125B enclosure with top mounted jacks

