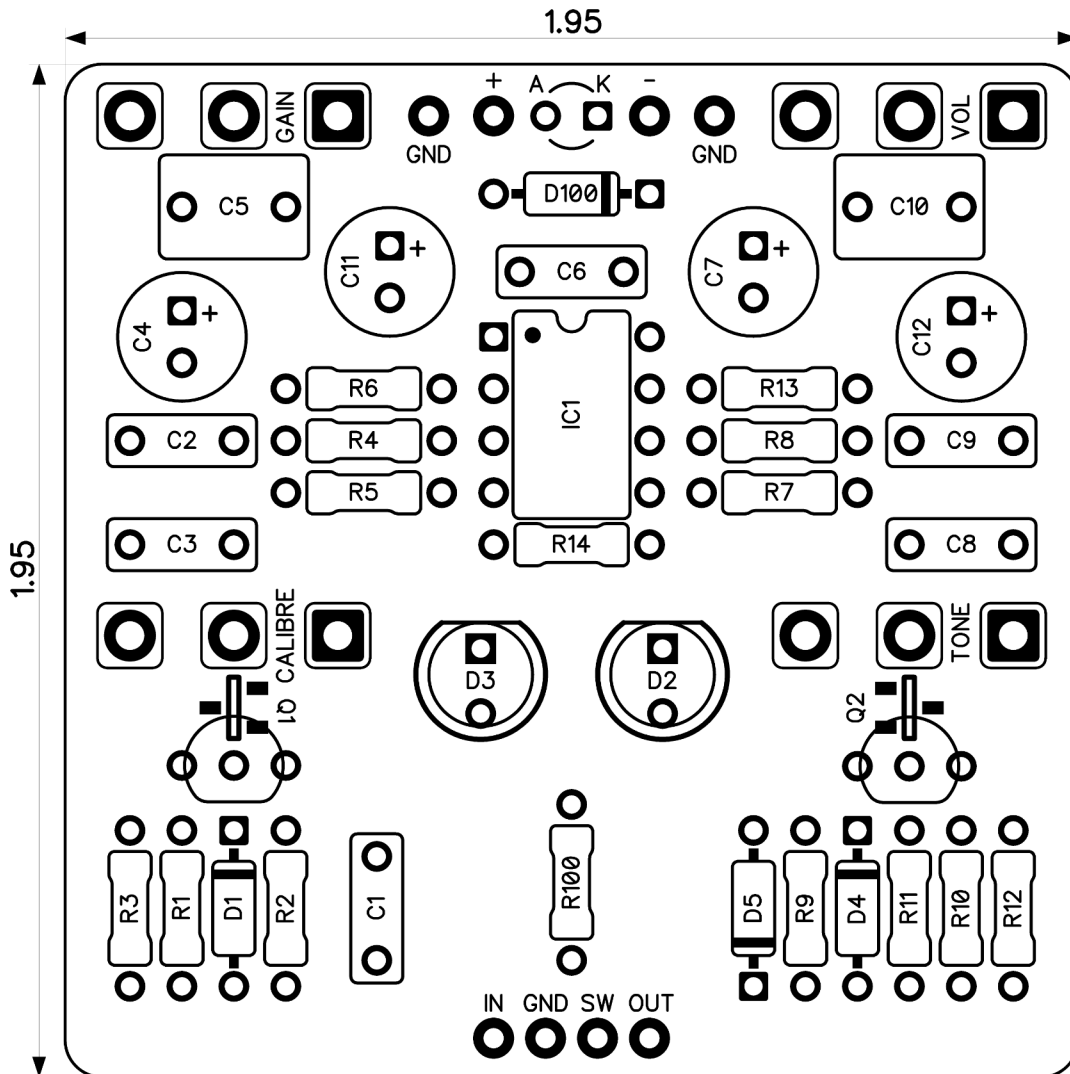


PedalPCB

Pumbaa Distortion

Revised 12/15/22



CONTROLS AND FEATURES

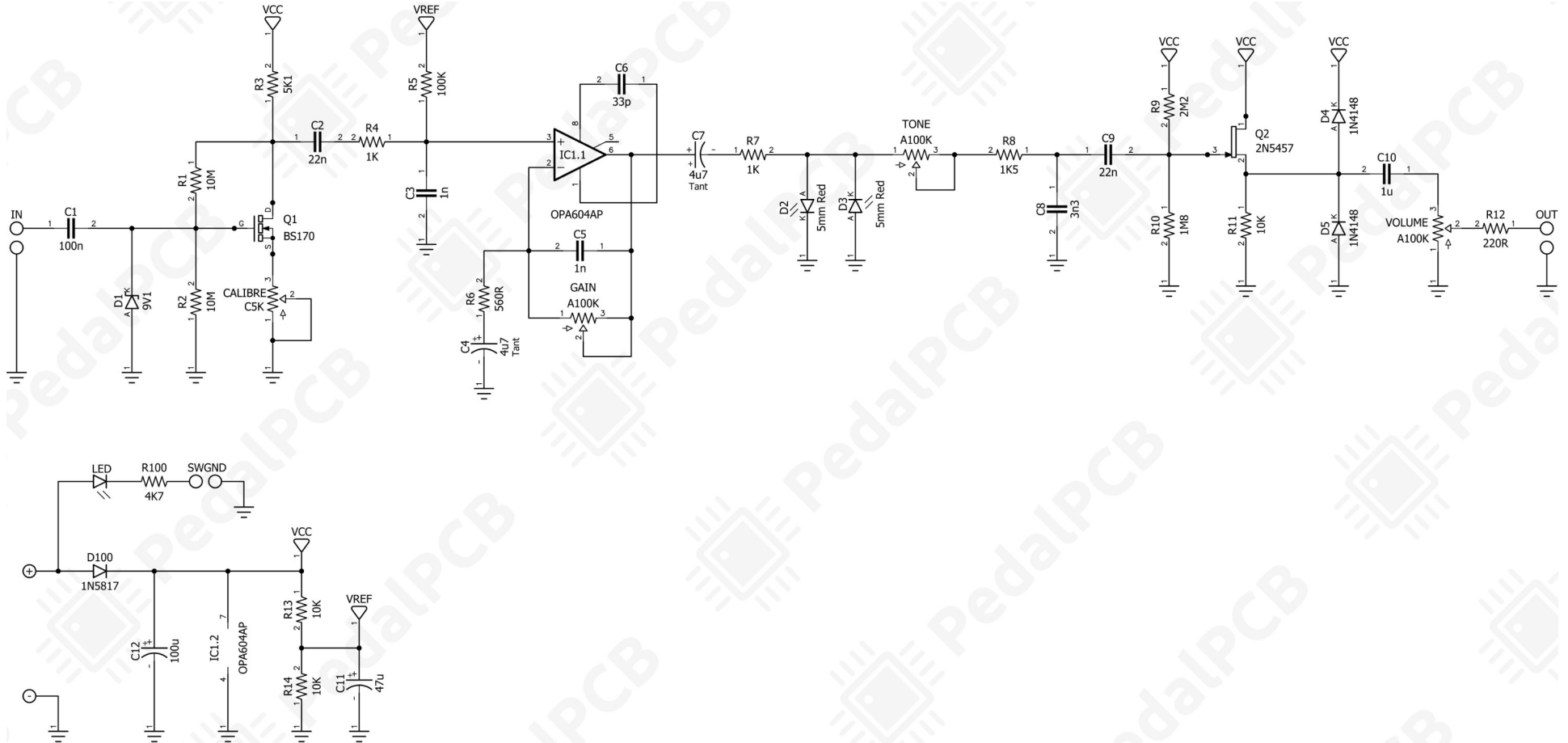
- Volume
- Gain
- Tone
- Calibre

All trademarks and registered trademarks are the property of their respective owners. The company, product, and service names used in this web site are for identification purposes only. Use of these names, logos, and brands does not imply endorsement.

LOCATION	VALUE	TYPE	NOTES
R1	10M	Resistor, 1/4W	
R2	10M	Resistor, 1/4W	
R3	5K1	Resistor, 1/4W	
R4	1K	Resistor, 1/4W	
R5	100K	Resistor, 1/4W	
R6	560R	Resistor, 1/4W	
R7	1K	Resistor, 1/4W	
R8	1K5	Resistor, 1/4W	
R9	2M2	Resistor, 1/4W	
R10	1M8	Resistor, 1/4W	
R11	10K	Resistor, 1/4W	
R12	220R	Resistor, 1/4W	
R13	10K	Resistor, 1/4W	
R14	10K	Resistor, 1/4W	
R100	4K7	Resistor, 1/4W	* LED current limiting resistor
C1	100n	Film capacitor, 7.2 x 2.5mm	
C2	22n	Film capacitor, 7.2 x 2.5mm	
C3	1n	Film capacitor, 7.2 x 2.5mm	
C4	4u7	Electrolytic capacitor, 5.0mm	
C5	1n	Film capacitor, 7.2 x 2.5mm	
C6	33p	Ceramic capacitor	
C7	4u7	Electrolytic capacitor, 5.0mm	
C8	3n3	Film capacitor, 7.2 x 2.5mm	
C9	22n	Film capacitor, 7.2 x 2.5mm	
C10	1u	Film capacitor, 7.2 x 5.0mm	
C11	47u	Electrolytic capacitor, 6.3mm	
C12	100u	Electrolytic capacitor, 6.3mm	
D1	9V1	Zener diode 1/2W, 9.1V	
D2	5mm Red	5mm Red LED	
D3	5mm Red	5mm Red LED	
D4	1N4148	Signal diode, DO-35	
D5	1N4148	Signal diode, DO-35	
D100	1N5817	Schottky diode, DO-41	
Q1	BS170	N-Channel MOSFET	
Q2	2N5457	JFET transistor, N-channel	
IC1	OPA604AP	Single op-amp, DIP8	
VOLUME	A100K	16mm right-angle PCB mount pot	
GAIN	A100K	16mm right-angle PCB mount pot	
TONE	A100K	16mm right-angle PCB mount pot	
CALIBRE	C5K	16mm right-angle PCB mount pot	

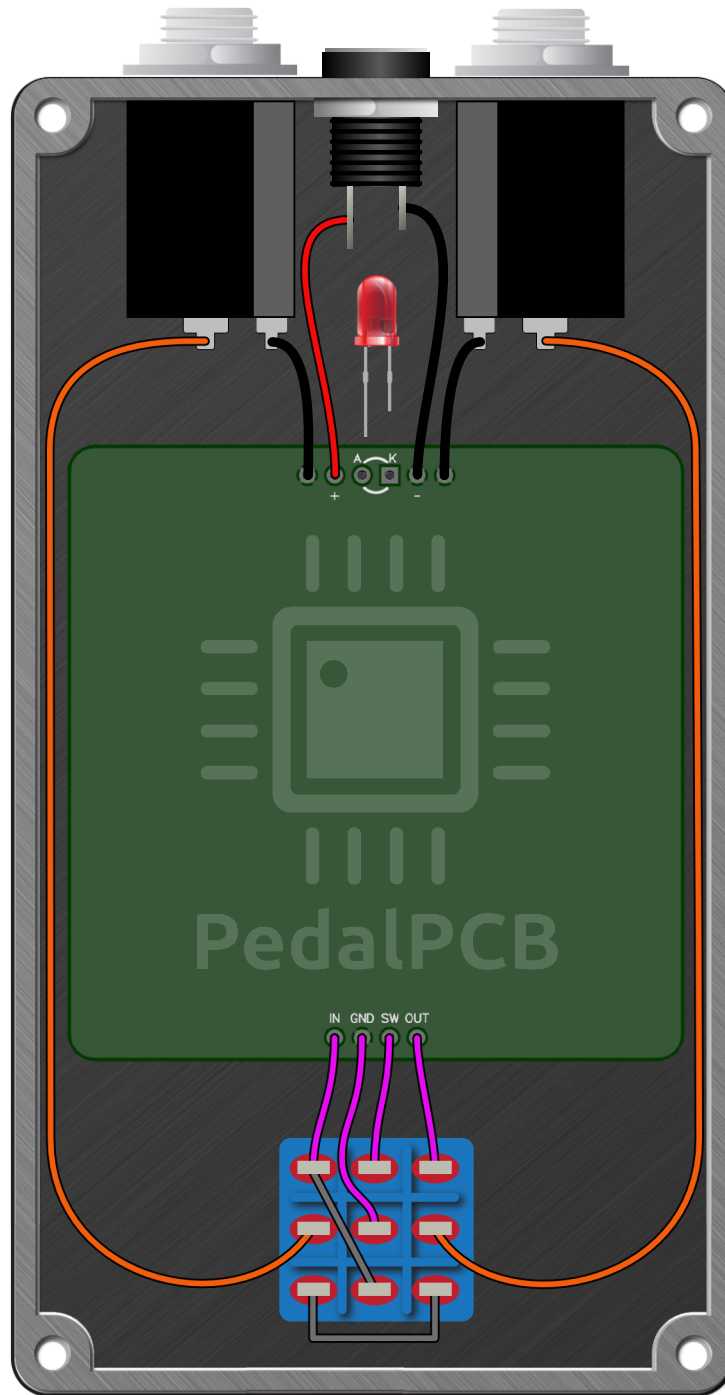
Pumbaa Distortion

Schematic Diagram



Pumbaa Distortion

Wiring Diagram



Pumbaa Distortion

Drill Template
125B Enclosure

