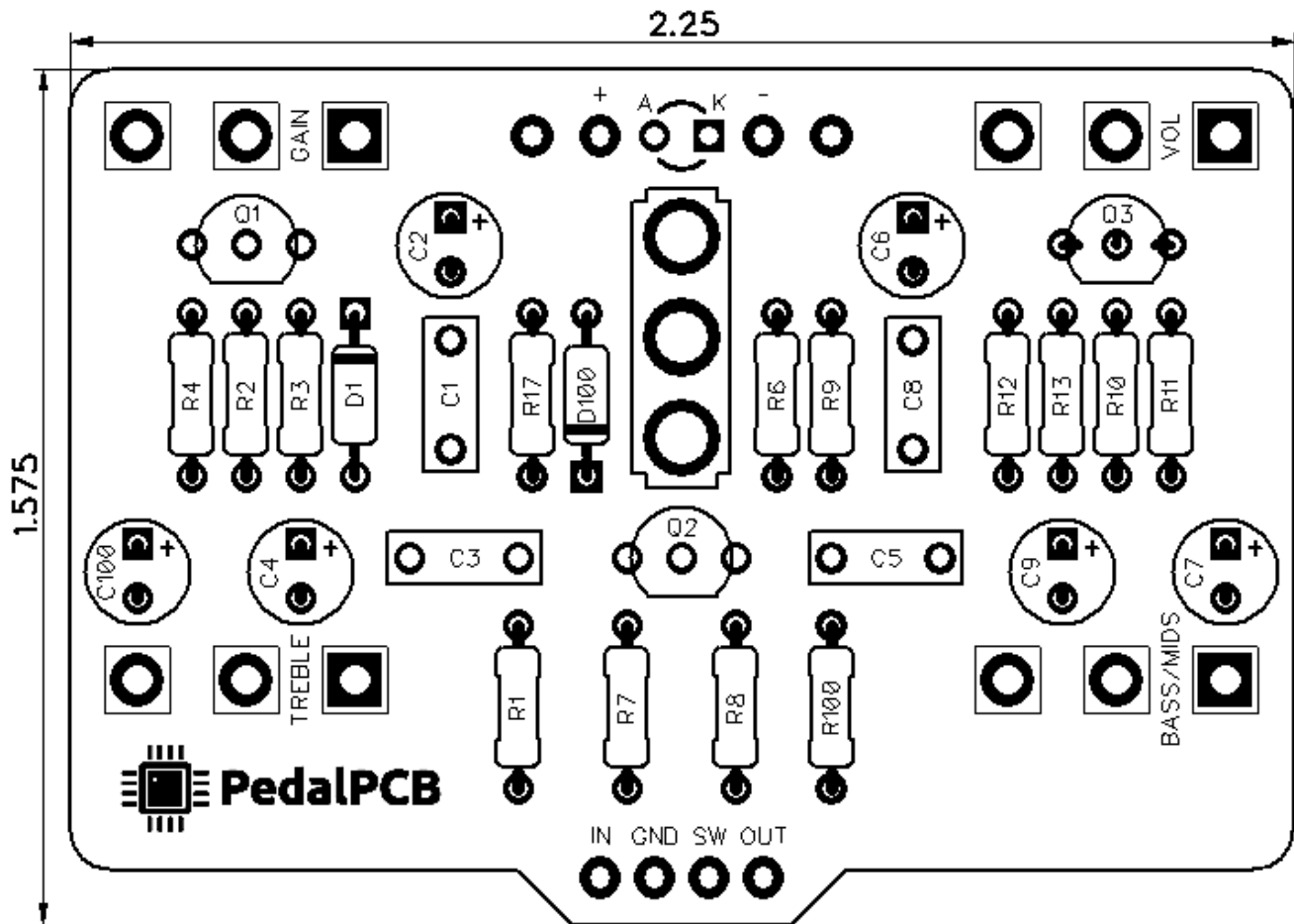




# PedalPCB

## Provocateur Fuzz

Revision 01.18.20



### Controls

- Volume
- Gain
- Treble
- Bass/Mids
- Spark/Flame (Toggle Switch)

All trademarks and registered trademarks are the property of their respective owners. The company, product, and service names used in this web site are for identification purposes only. Use of these names, logos, and brands does not imply endorsement.

# Provocateur Fuzz

## Parts List

**RESISTORS (1/4W)**

R1 1M  
R2 120K  
R3 2K2  
R4 12K  
R6 10K  
R7 2K7  
R8 2K  
R9 330K  
R10 10K  
R11 1M  
R12 39K  
R13 10K  
R17 1K  
R100 4K7

**CAPACITORS**

C1 220n  
C2 22u  
C3 30n  
C4 22u  
C5 20n  
C6 4u7  
C7 2u2  
C8 1n  
C9 1u  
C100 22u

**TRANSISTORS**

Q1 BS170  
Q2 BS170  
Q3 2N5457

**DIODES**

D1 9V1  
D100 1N5817

**POTENTIOMETERS**

VOL A100K  
GAIN C10K  
TREBLE A100K  
BASS/MIDS B100K

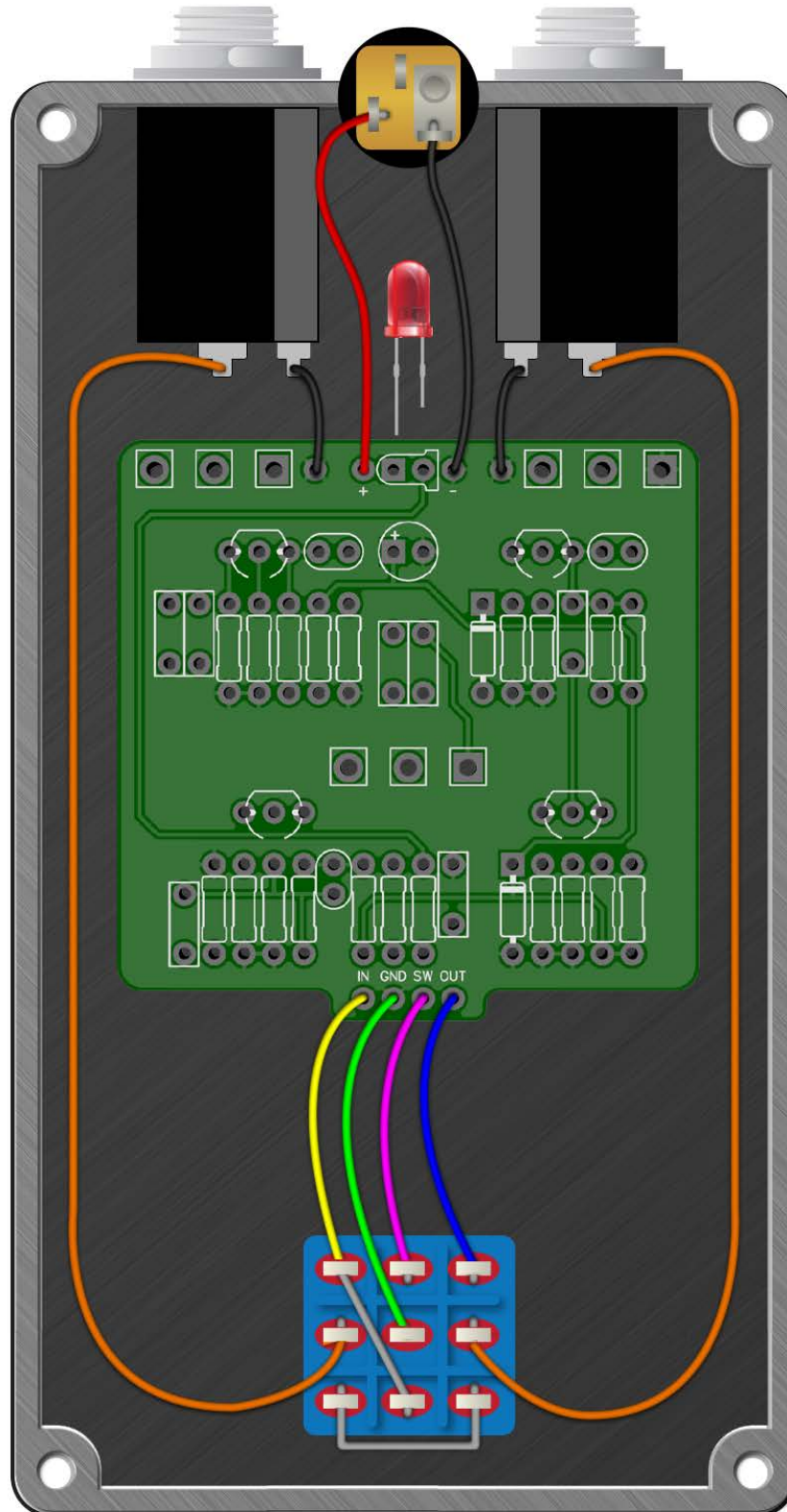
**SWITCHES**

SW1 SPDT (ON/ON)



# Provocateur Fuzz

Wiring Diagram



# Provocateur Fuzz

Drill Template  
125B Enclosure

