

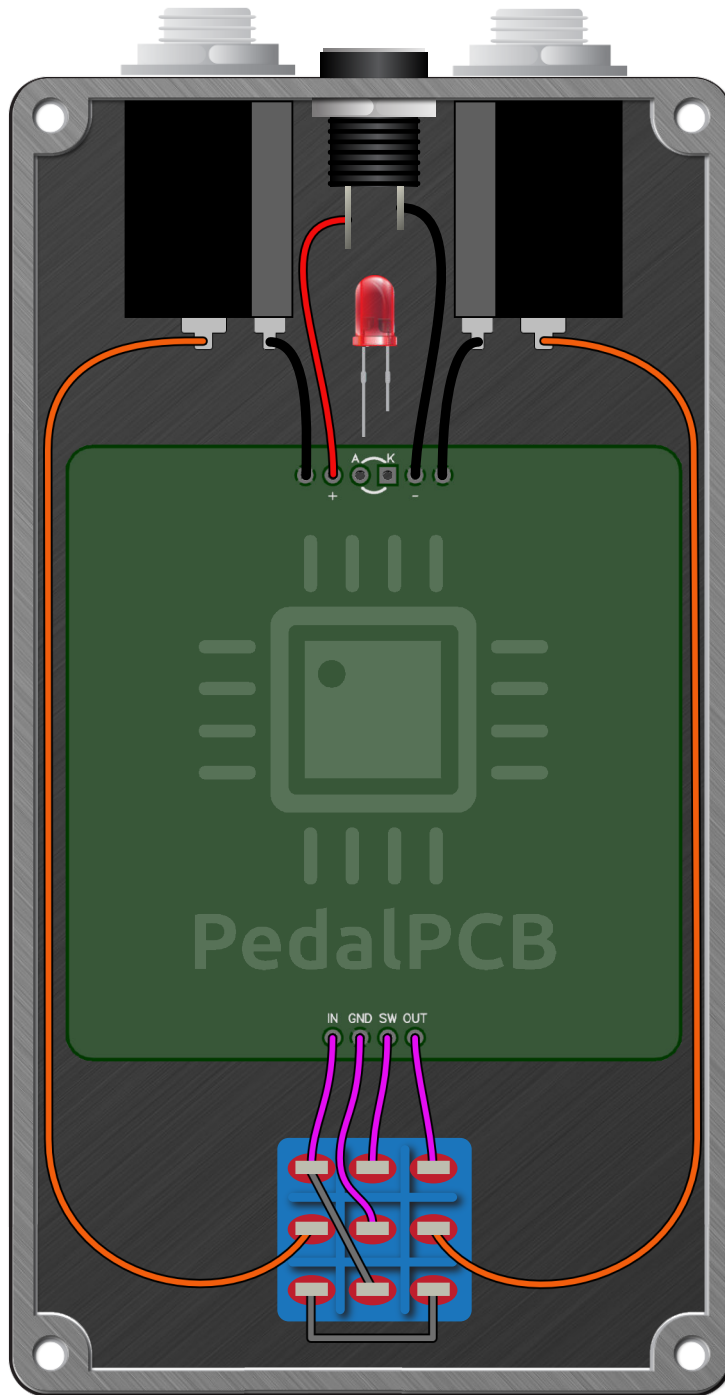
LOCATION	VALUE	TYPE	NOTES
R1	1M	Resistor, 1/4W	
R2	220K	Resistor, 1/4W	
R3	10K	Resistor, 1/4W	
R4	10K	Resistor, 1/4W	
R5	10K	Resistor, 1/4W	
R6	22K	Resistor, 1/4W	
R7	33K	Resistor, 1/4W	
R8	33K	Resistor, 1/4W	
R9	220K	Resistor, 1/4W	
R10	5K6	Resistor, 1/4W	
R11	10K	Resistor, 1/4W	
R12	10K	Resistor, 1/4W	
R13	10K	Resistor, 1/4W	
R14	100K	Resistor, 1/4W	
R15	10K	Resistor, 1/4W	
R16	10K	Resistor, 1/4W	
R17	5K6	Resistor, 1/4W	
R18	22K	Resistor, 1/4W	
R19	220K	Resistor, 1/4W	
R20	470R	Resistor, 1/4W	
R21	1K	Resistor, 1/4W	
CLR	4K7	Resistor, 1/4W	* LED current limiting resistor
C1	100n	Film capacitor, 7.2 x 5.0mm	
C2	10u	Electrolytic capacitor, 5mm	
C3	10n	Film capacitor, 7.2 x 2.5mm	
C4	10n	Film capacitor, 7.2 x 2.5mm	
C5	100n	Film capacitor, 7.2 x 2.5mm	
C6	100n	Film capacitor, 7.2 x 2.5mm	
C7	100n	Film capacitor, 7.2 x 2.5mm	
C8	100n	Film capacitor, 7.2 x 2.5mm	
C9	6n8	Film capacitor, 7.2 x 2.5mm	
C10	6n8	Film capacitor, 7.2 x 2.5mm	
C11	10u	Electrolytic capacitor, 5mm	
C100	10u	Electrolytic capacitor, 5mm	
D1	1N4148	Signal diode, DO-35	
D2	1N4148	Signal diode, DO-35	
D3	1N4148	Signal diode, DO-35	
D4	1N4148	Signal diode, DO-35	
D100	1N5817	Schottky diode, DO-41	
Q1	BC182	BJT transistor, NPN TO-92	See note below
IC1	MC1458P	Dual op-amp, DIP8	
IC2	LM741CN	Single op-amp, DIP8	
LEVEL	A10K	16mm right-angle PCB mount pot	
ATTACK	A100K	16mm right-angle PCB mount pot	



First batch of PCBs are incorrectly marked BC182L. BC182 with L suffix have a different pinout and should not be used.

Prismatic Distortion

Wiring Diagram



Prismatic Distortion

Drill Template
125B Enclosure

