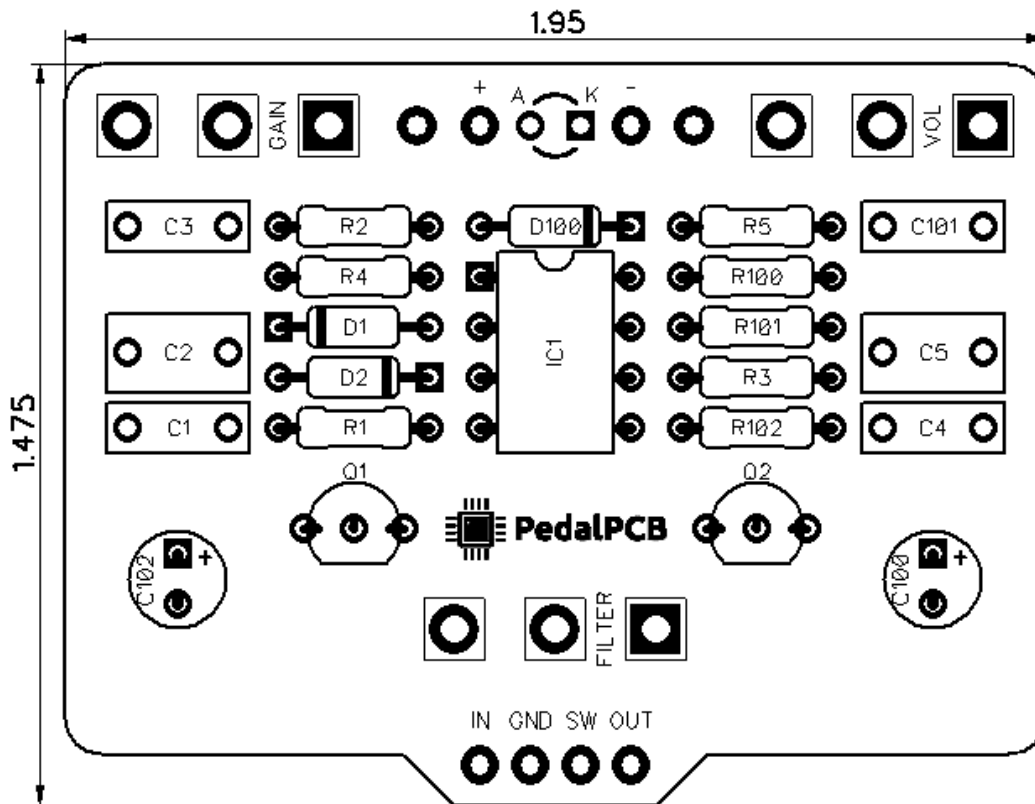


# PedalPCB

## Phoenix Ultra Overdrive

Revision 12.27.19



### Controls

- Volume
- Gain
- Filter

All trademarks and registered trademarks are the property of their respective owners. The company, product, and service names used in this web site are for identification purposes only. Use of these names, logos, and brands does not imply endorsement.

**RESISTORS (1/4W)**

R1 2M2  
R2 3K3  
R3 100K  
R4 10K  
R5 10K  
R100 10K  
R101 10K  
R102 4K7

**CAPACITORS**

C1 100n  
C2 470n  
C3 100p  
C4 3n3  
C5 470n  
C100 100u  
C101 100n  
C102 100u

**TRANSISTORS**

Q1 2N7000  
Q2 2N7000

**INTEGRATED CIRCUITS**

IC1 OPA2134

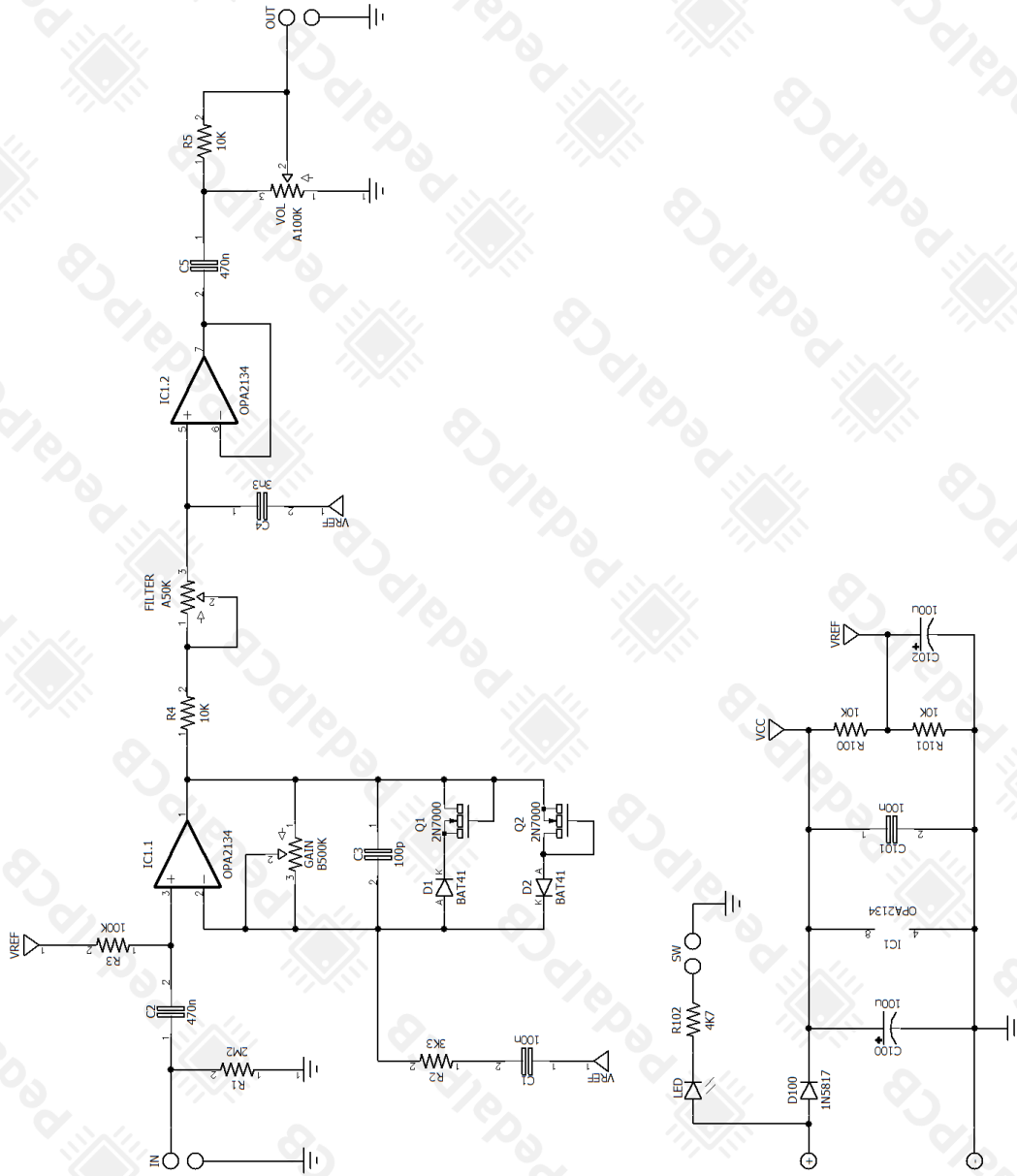
**DIODES**

D1 BAT41  
D2 BAT41  
D100 1N5817

**POTENTIOMETERS**

VOL A100K  
GAIN B500K  
FILTER A50K

# Phoenix Ultra Overdrive



# Phoenix Ultra Overdrive

Wiring Diagram

