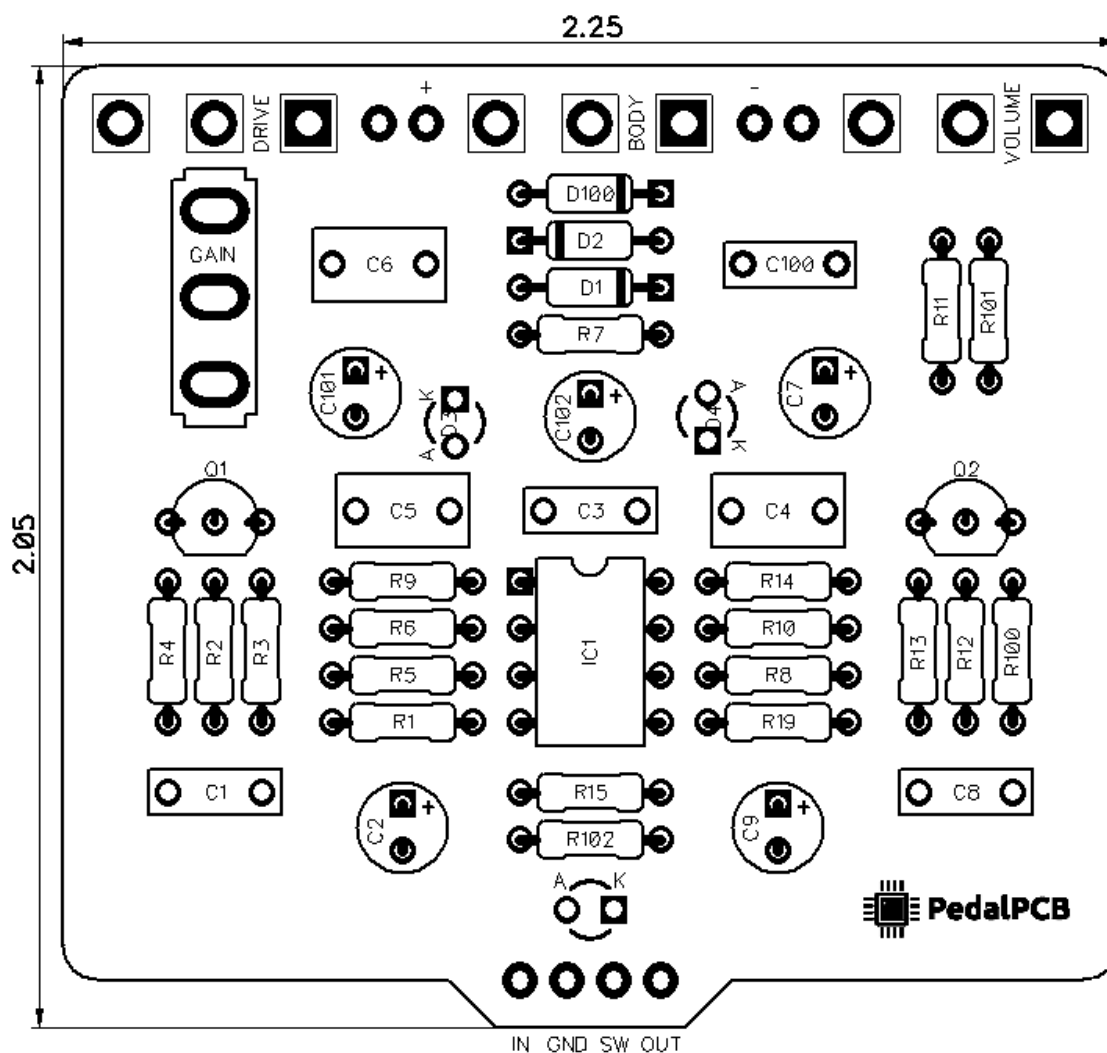


PedalPCB

Triad Overdrive

Revised 12/31/20

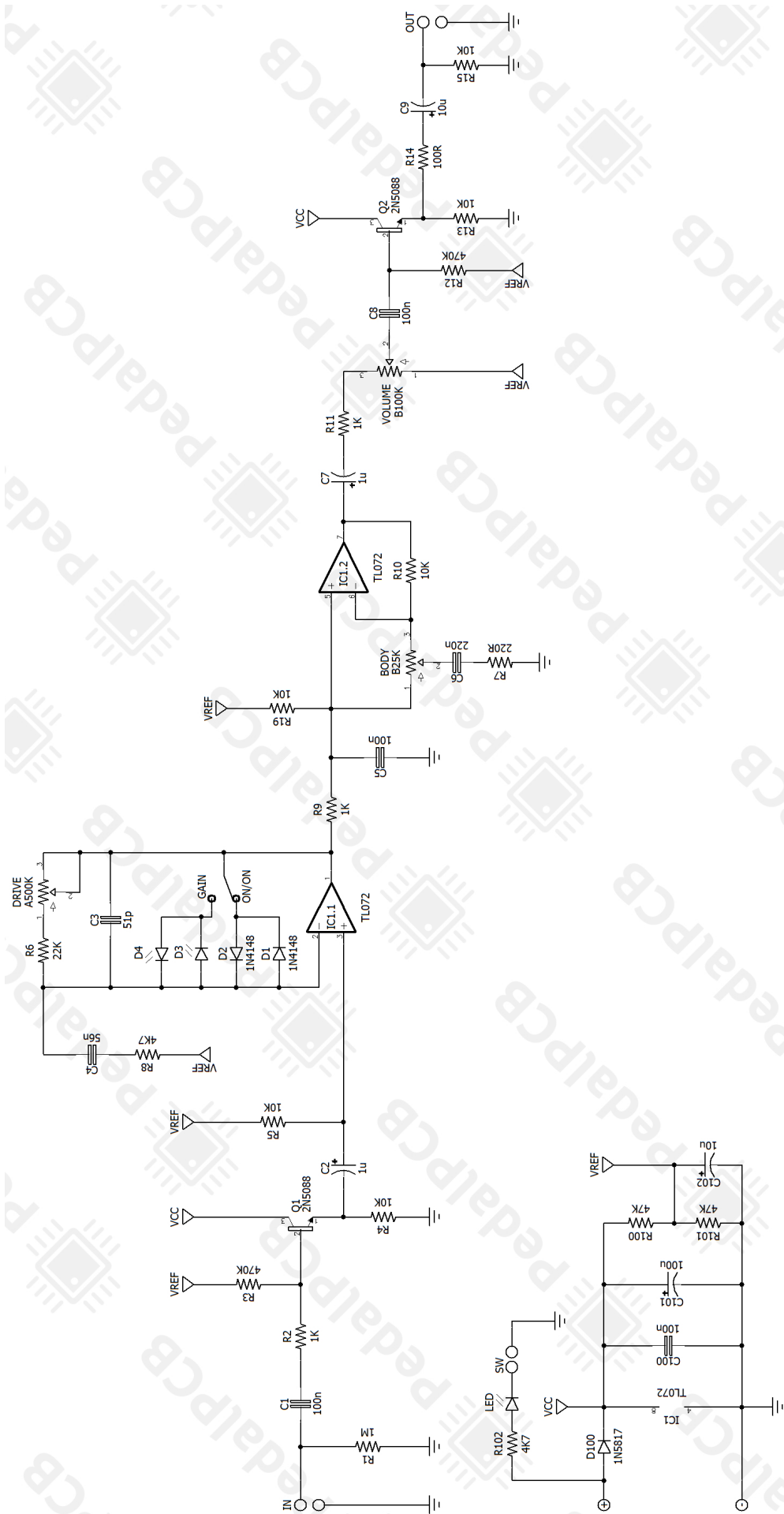


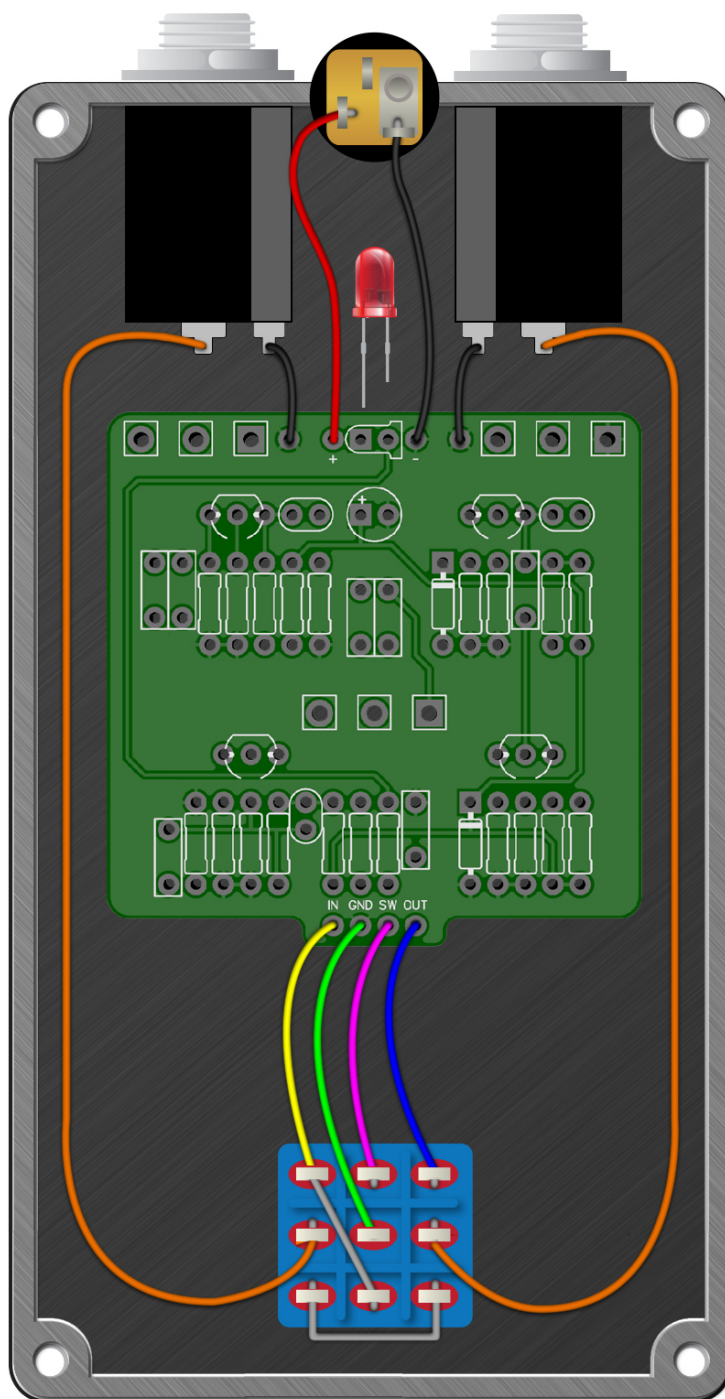
CONTROLS AND FEATURES

- Volume
- Body
- Drive
- Gain (Toggle switch)

All trademarks and registered trademarks are the property of their respective owners. The company, product, and service names used in this web site are for identification purposes only. Use of these names, logos, and brands does not imply endorsement.

LOCATION	VALUE	TYPE	NOTES
R1	1M	Resistor, 1/4W	
R2	1K	Resistor, 1/4W	
R3	470K	Resistor, 1/4W	
R4	10K	Resistor, 1/4W	
R5	10K	Resistor, 1/4W	
R6	22K	Resistor, 1/4W	
R7	220R	Resistor, 1/4W	
R8	4K7	Resistor, 1/4W	
R9	1K	Resistor, 1/4W	
R10	10K	Resistor, 1/4W	
R11	1K	Resistor, 1/4W	
R12	470K	Resistor, 1/4W	
R13	10K	Resistor, 1/4W	
R14	100R	Resistor, 1/4W	
R15	10K	Resistor, 1/4W	
R19	10K	Resistor, 1/4W	
R100	47K	Resistor, 1/4W	
R101	47K	Resistor, 1/4W	
R102	4K7	Resistor, 1/4W	
C1	100n	Film capacitor, 7.2 x 2.5mm	
C2	1u	Electrolytic capacitor, 5mm	
C3	51p	Ceramic capacitor	
C4	56n	Film capacitor, 7.2 x 2.5mm	
C5	100n	Film capacitor, 7.2 x 2.5mm	
C6	220n	Film capacitor, 7.2 x 5.0mm	
C7	1u	Electrolytic capacitor, 5mm	
C8	100n	Film capacitor, 7.2 x 2.5mm	
C9	10u	Electrolytic capacitor, 5mm	
C100	100n	Film capacitor, 7.2 x 2.5mm	
C101	100u	Electrolytic capacitor, 5mm	
C102	10u	Electrolytic capacitor, 5mm	
D1	1N4148	Signal diode, DO-35	
D2	1N4148	Signal diode, DO-35	
D3	LED	3mm Red LED, Diffused	
D4	LED	3mm Red LED, Diffused	
D100	1N5817	Schottky diode, DO-41	
Q1	2N5088	BJT transistor, NPN TO-92	
Q2	2N5088	BJT transistor, NPN TO-92	
IC1	TL072	Dual op-amp, DIP8	
VOLUME	B100K	16mm right-angle PCB mount pot	
BODY	B25K	16mm right-angle PCB mount pot	
DRIVE	A500K	16mm right-angle PCB mount pot	
GAIN	SPDT	Toggle switch, SPDT	2-position (ON/ON)





Triad Overdrive

Drill Template
125B Enclosure

