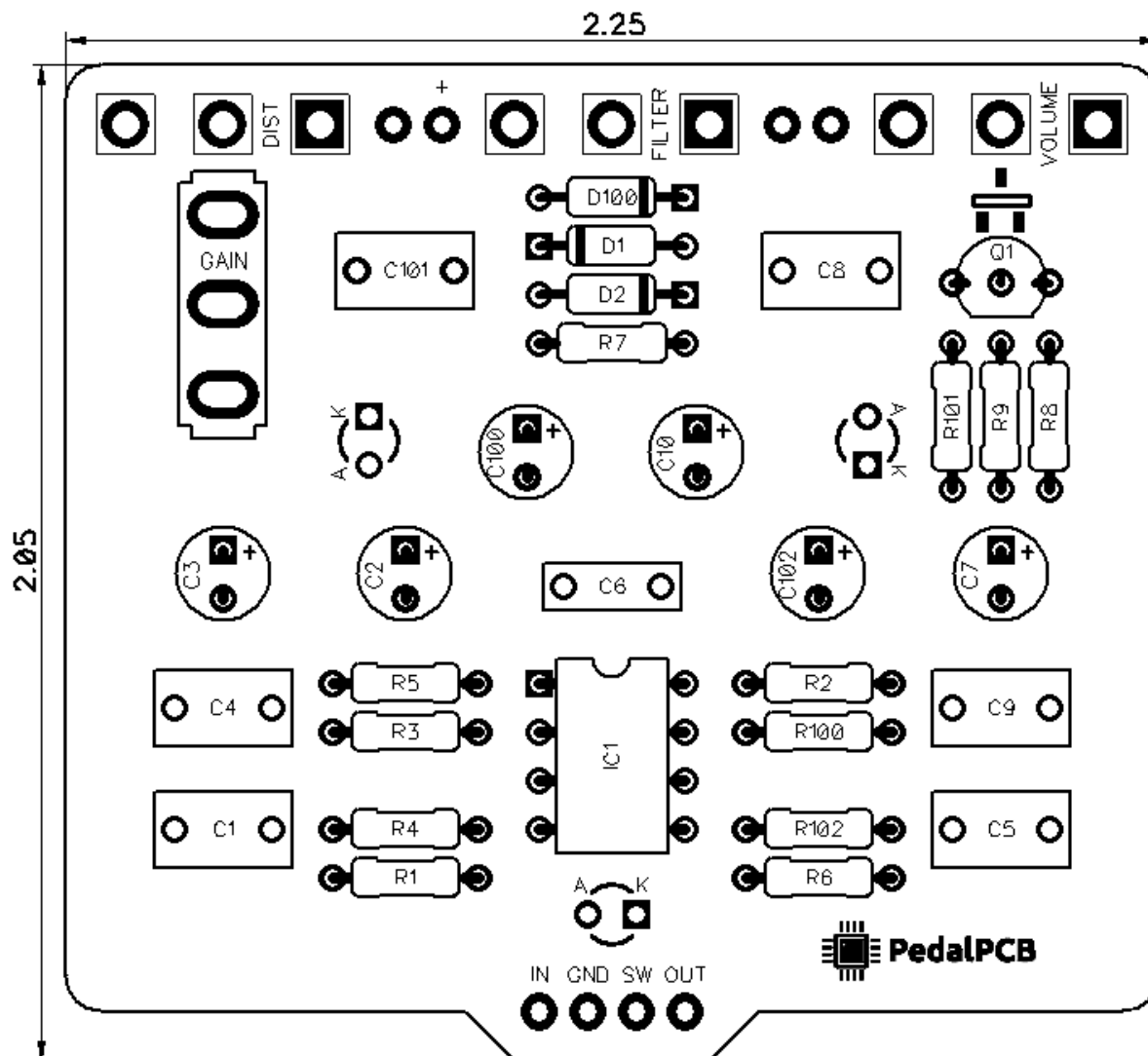


# PedalPCB

## Triad Distortion

Revised 12/30/20



## CONTROLS AND FEATURES

- Volume
- Filter
- Distortion
- Gain (Toggle switch)

All trademarks and registered trademarks are the property of their respective owners. The company, product, and service names used in this web site are for identification purposes only. Use of these names, logos, and brands does not imply endorsement.

LOCATION	VALUE	TYPE	NOTES
R1	1M	Resistor, 1/4W	
R2	1M	Resistor, 1/4W	
R3	560R	Resistor, 1/4W	
R4	1K	Resistor, 1/4W	
R5	47R	Resistor, 1/4W	
R6	1K	Resistor, 1/4W	
R7	1K5	Resistor, 1/4W	
R8	1M	Resistor, 1/4W	
R9	10K	Resistor, 1/4W	
R100	10K	Resistor, 1/4W	
R101	10K	Resistor, 1/4W	
R102	4K7	Resistor, 1/4W	
C1	22n	Film capacitor, 7.2 x 2.5mm	
C2	4u7	Electrolytic capacitor, 5mm	
C3	2u2	Electrolytic capacitor, 5mm	
C4	1n	Film capacitor, 7.2 x 2.5mm	
C5	100p	Ceramic capacitor	
C6	30p	Ceramic capacitor	
C7	4u7	Electrolytic capacitor, 5mm	
C8	3n3	Film capacitor, 7.2 x 2.5mm	
C9	22n	Film capacitor, 7.2 x 2.5mm	
C10	1u	Electrolytic capacitor, 5mm	
C100	100u	Electrolytic capacitor, 5mm	
C101	100n	Film capacitor, 7.2 x 2.5mm	
C102	100u	Electrolytic capacitor, 5mm	
D1	1N4148	Signal diode, DO-35	
D2	1N4148	Signal diode, DO-35	
D3	Red	3mm Red LED, Diffused	
D4	Red	3mm Red LED, Diffused	
D100	1N5817	Schottky diode, DO-41	
Q1	J202	JFET transistor, N-channel	Alternate: MMBFJ202 (SMD)
IC1	OP07	Single op-amp, DIP8	
VOLUME	A100K	16mm right-angle PCB mount pot	
FILTER	C100K	16mm right-angle PCB mount pot	
DIST	A100K	16mm right-angle PCB mount pot	
GAIN	SPDT	Toggle switch, SPDT	2-position (ON/ON)

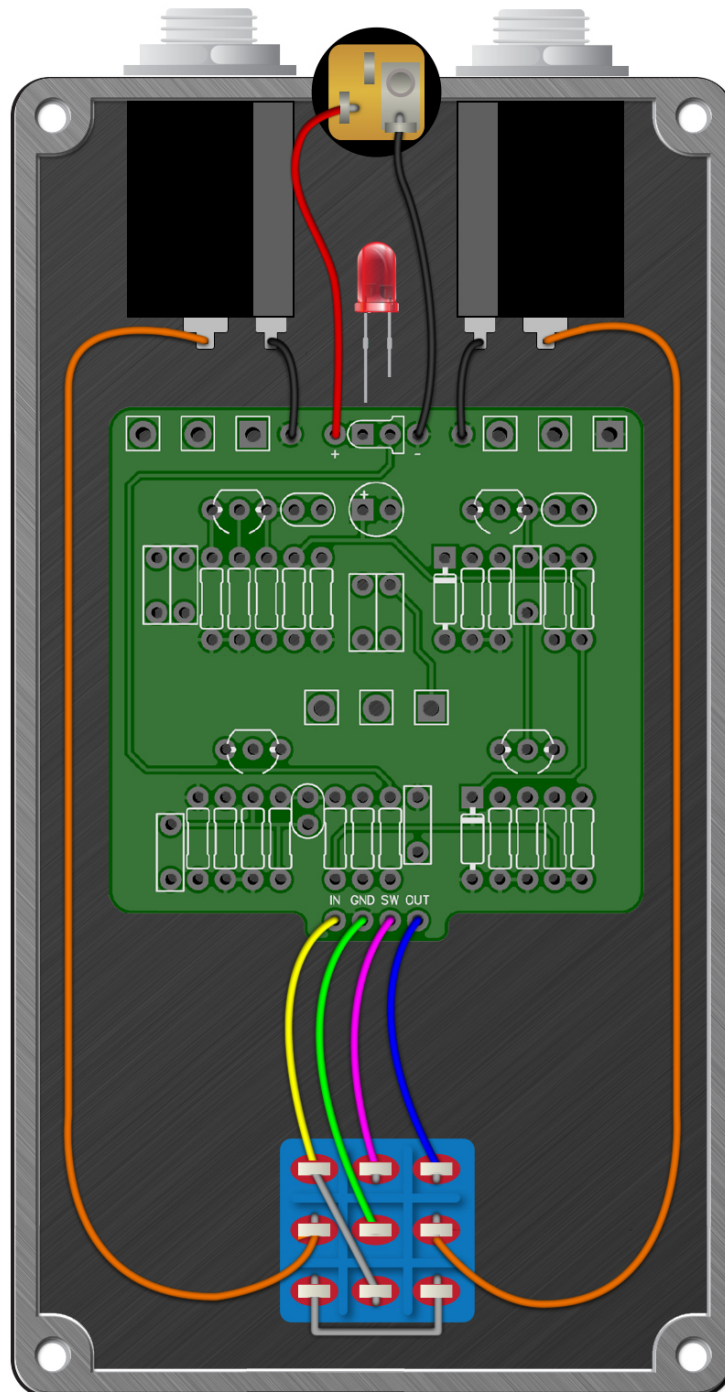


## Schematic Diagram



# Triad Distortion

Wiring Diagram



# Triad Distortion

Drill Template  
125B Enclosure

