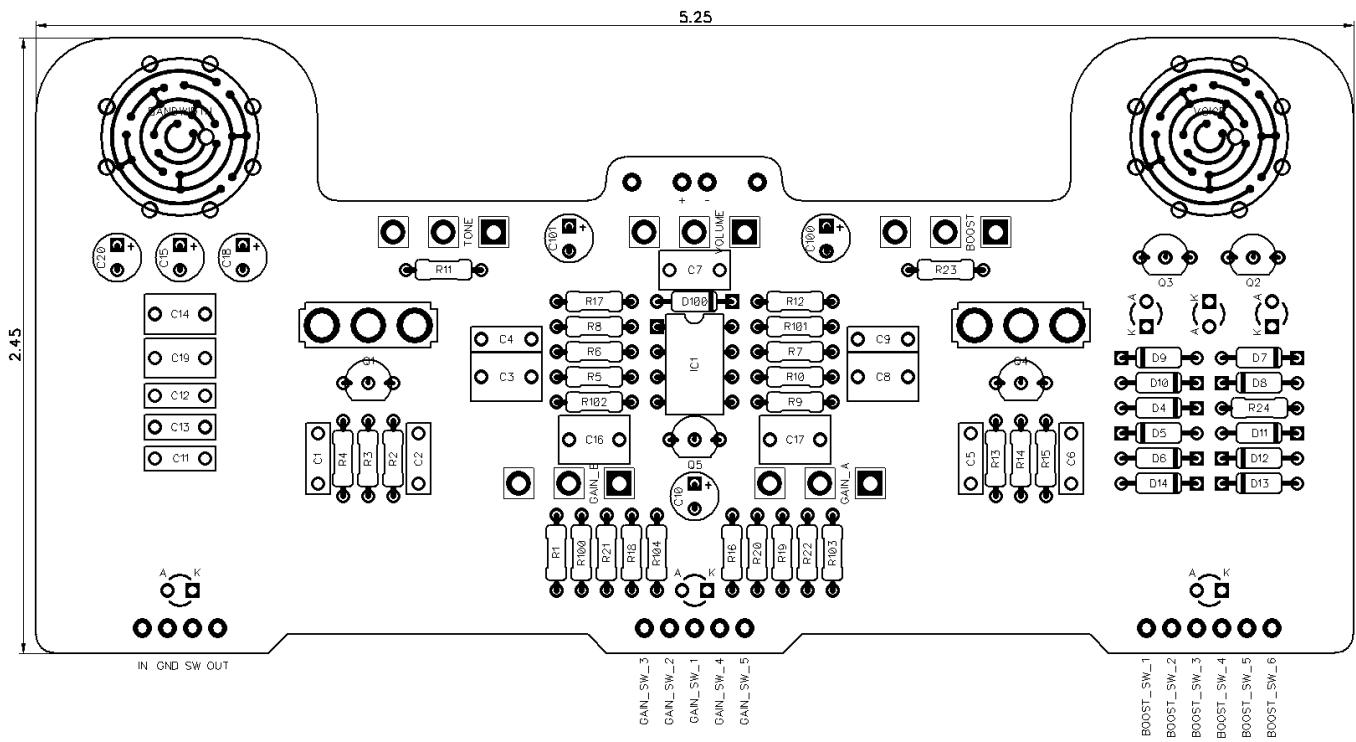




PedalPCB

Stockade Overdrive

Revision 02.12.20



Controls

- Volume
- Tone
- Gain A
- Gain B
- Boost
- Voice (Rotary Switch)
- Bandwidth (Rotary Switch)
- Bright (Toggle Switch)
- Buffer (Toggle Switch)

All trademarks and registered trademarks are the property of their respective owners. The company, product, and service names used in this web site are for identification purposes only. Use of these names, logos, and brands does not imply endorsement.

RESISTORS (1/4W)

R1	1M
R2	1K
R3	560K
R4	10K
R5	22K
R6	10K
R7	22K
R8	1K
R9	10K
R10	1K
R11	330R
R12	1K
R13	10K
R14	560K
R15	100R
R16	10K
R17	1K
R18	1K
R19	10K
R20	10M
R21	100K
R22	1M
R23	4K7
R24	100R
R100	4K7
R101	10K
R102	10K
R103	4K7
R104	4K7

CAPACITORS

C1	100p
C2	100n
C3	1u
C4	47p
C5	150n
C6	68n
C7	330n
C8	1u
C9	100n
C10	10u
C11	33n
C12	68n
C13	100n
C14	220n
C15	10u
C16	1u
C17	1u
C18	1u
C19	470n
C20	2u2
C100	100u
C101	47u

TOGGLE SWITCHES

BRIGHT	SPDT ON/ON
BUFFER	SPDT ON/ON

ROTARY SWITCHES

VOICE	Mini 1P8T
BANDWIDTH	Mini 1P8T

INTEGRATED CIRCUITS

IC1	LM833N
-----	--------

TRANSISTORS

Q1	MPSA18
Q2	2N7000
Q3	2N7000
Q4	MPSA18
Q5	MPSA13

DIODES

D1	Red 3mm LED
D2	Red 3mm LED
D3	Red 3mm LED
D4	1N916
D5	1N916
D6	1N916
D7	1N4148
D8	1N4148
D9	BAT41
D10	BAT41
D11	1N4148
D12	1N4148
D13	1N4678
D14	1N4678
D100	1N5817

LEDS

LED	Red 3mm LED
LED_BOOST	Red 3mm LED
LED_GAIN	Red 3mm LED

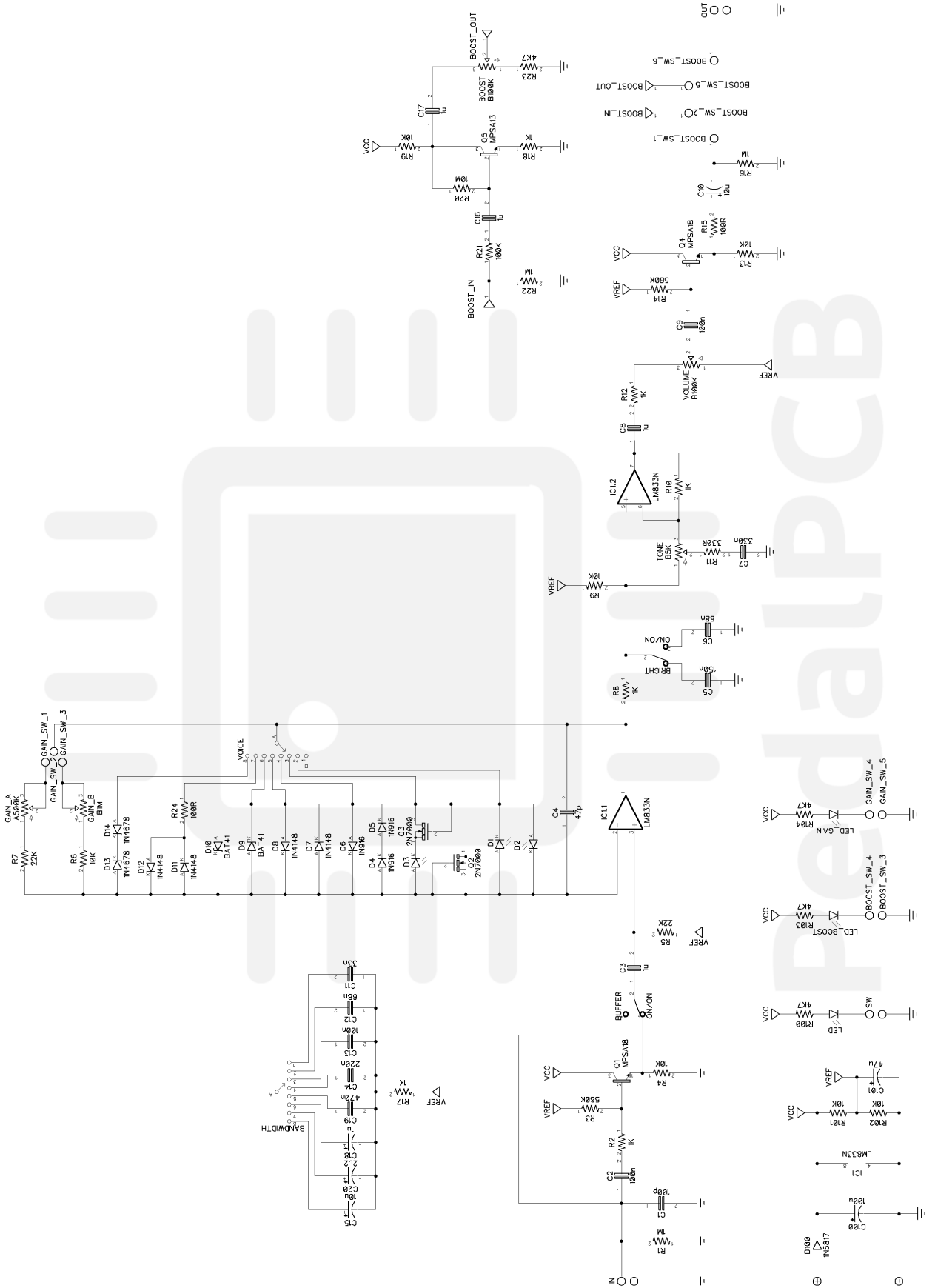
POTENTIOMETERS

BOOST	B100K
TONE	B5K
VOLUME	B100K
GAIN_A	A500K
GAIN_B	B1M

NOTES

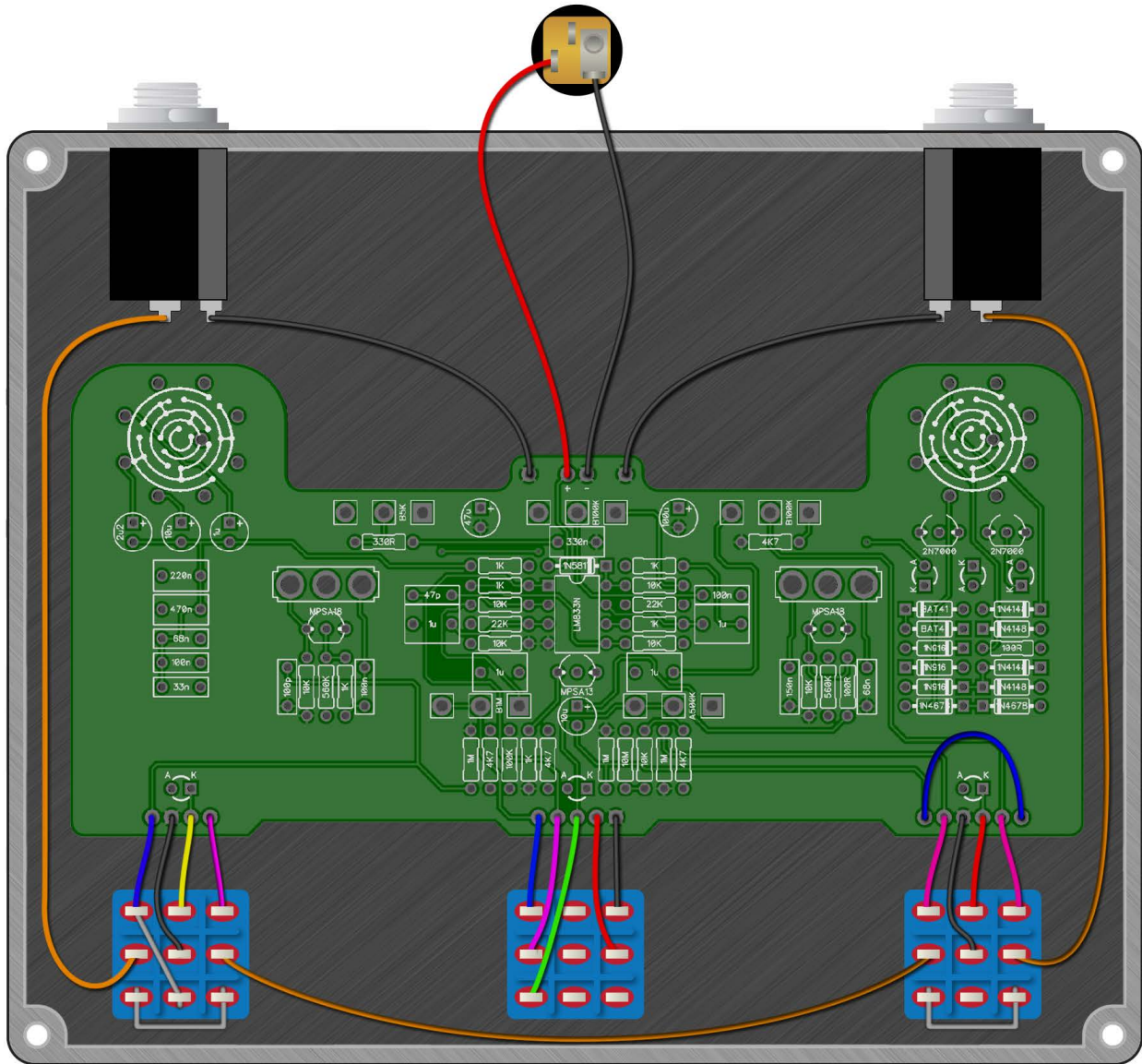
Originally R16 was marked as 1M. Changing to 10K reduces popping when switching from Active / Bypass.

Stockade Overdrive



Stockade Overdrive

Alternate Wiring Diagram
(Independent Boost)



Stockade Overdrive

Drill Template
4S6500 / 1590XX Enclosure

