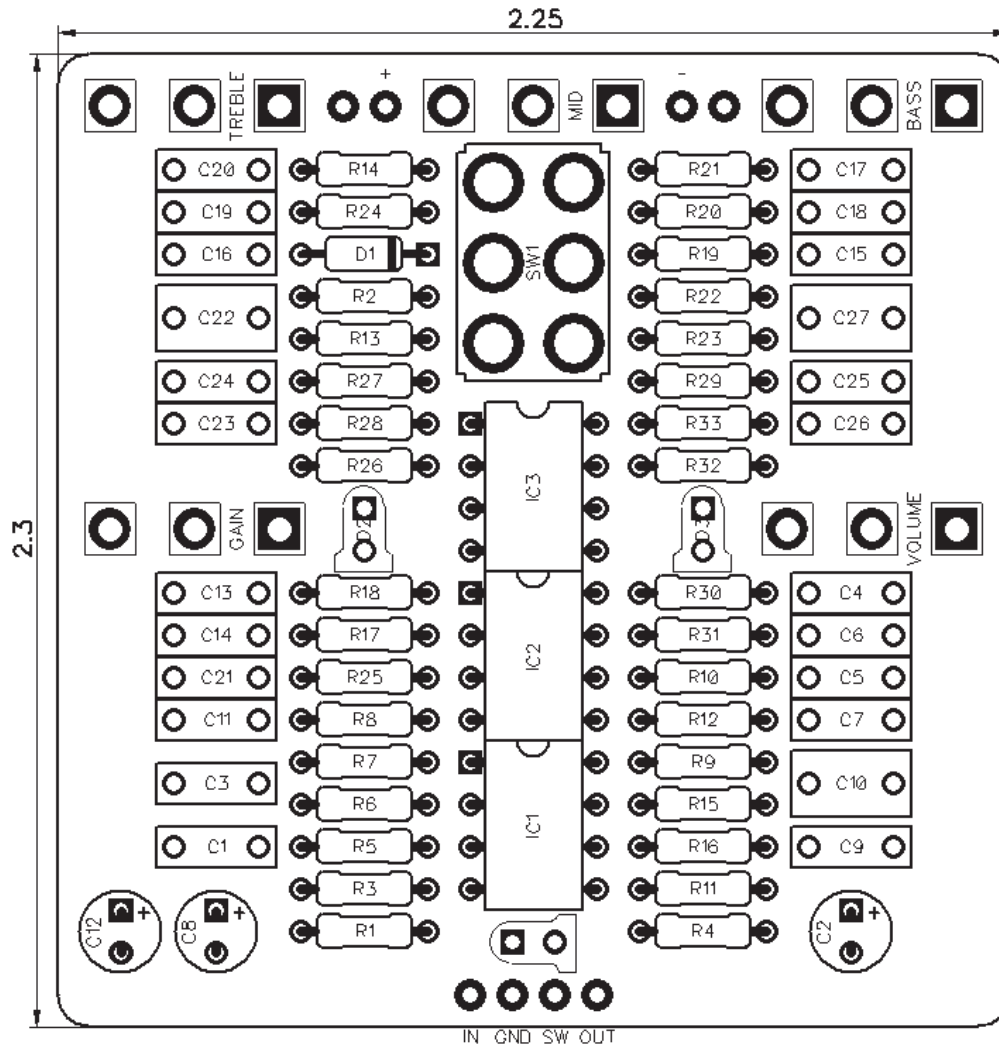




# PedalPCB

## Sanguine Distortion

Revision 02.28.19



### Controls

- Volume
- Gain
- Treble
- Mid
- Bass
- Character (Toggle Switch)

All trademarks and registered trademarks are the property of their respective owners. The company, product, and service names used in this web site are for identification purposes only. Use of these names, logos, and brands does not imply endorsement.

**RESISTORS (1/4W)**

R1 1M  
R2 10R  
R3 470K  
R4 4K7  
R5 10K  
R6 47K  
R7 82K  
R8 20K  
R9 20K  
R10 33K  
R11 10K  
R12 1K5  
R13 33K  
R14 10K  
R15 33K  
R16 56K  
R17 10K  
R18 150K  
R19 4K7  
R20 56K  
R21 100K  
R22 2K  
R23 4K7  
R24 100K  
R25 470K  
R26 10K  
R27 1M  
R28 22K  
R29 10K  
R30 1K5  
R31 10K  
R32 470K  
R33 2K

**CAPACITORS**

C1 22n  
C2 100u  
C3 100p  
C4 100n  
C5 4n7  
C6 2n2  
C7 100n  
C8 22u  
C9 1n  
C10 220n  
C11 100p  
C12 4u7  
C13 100p  
C14 22n  
C15 10n  
C16 1n  
C17 47n  
C18 100n  
C19 2n2  
C20 47n  
C21 47n  
C22 220n  
C23 2n2  
C24 10n  
C25 10n  
C26 100p  
C27 220n

**INTEGRATED CIRCUITS**

IC1 TL072  
IC2 TL072  
IC3 TL072

**DIODES**

D1 1N5817  
D2 3mm Red LED  
D3 3mm Red LED

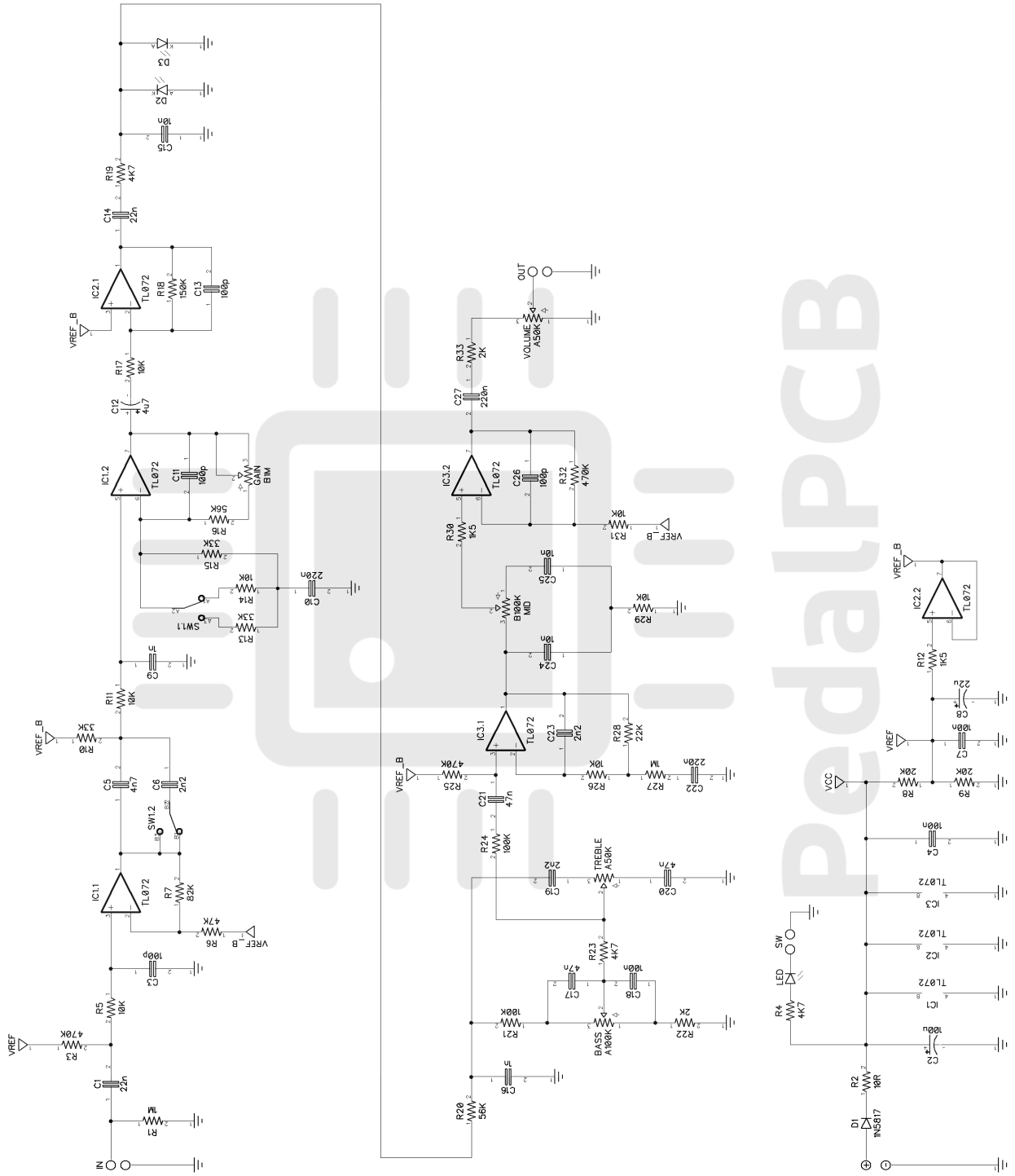
**POTENTIOMETERS**

VOLUME A50K  
GAIN B1M  
TREBLE A50K  
MID B100K  
BASS A100K

**SWITCHES**

SW1 DPDT Toggle (On/Off/On)

# Sanguine Distortion



# Sanguine Distortion

Wiring Diagram



# Sanguine Distortion

Drill Template  
125B Enclosure

