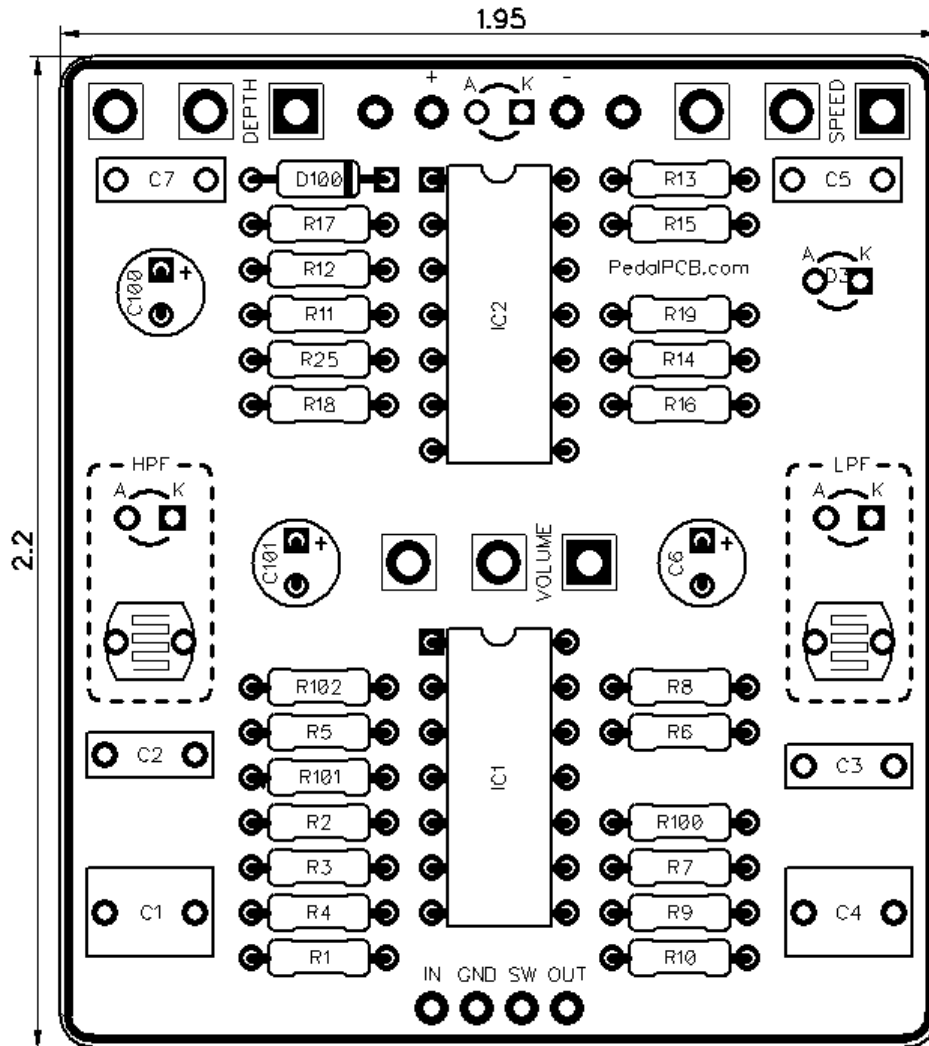




Pendulum Tremolo

Revised 12/23/21



CONTROLS AND FEATURES

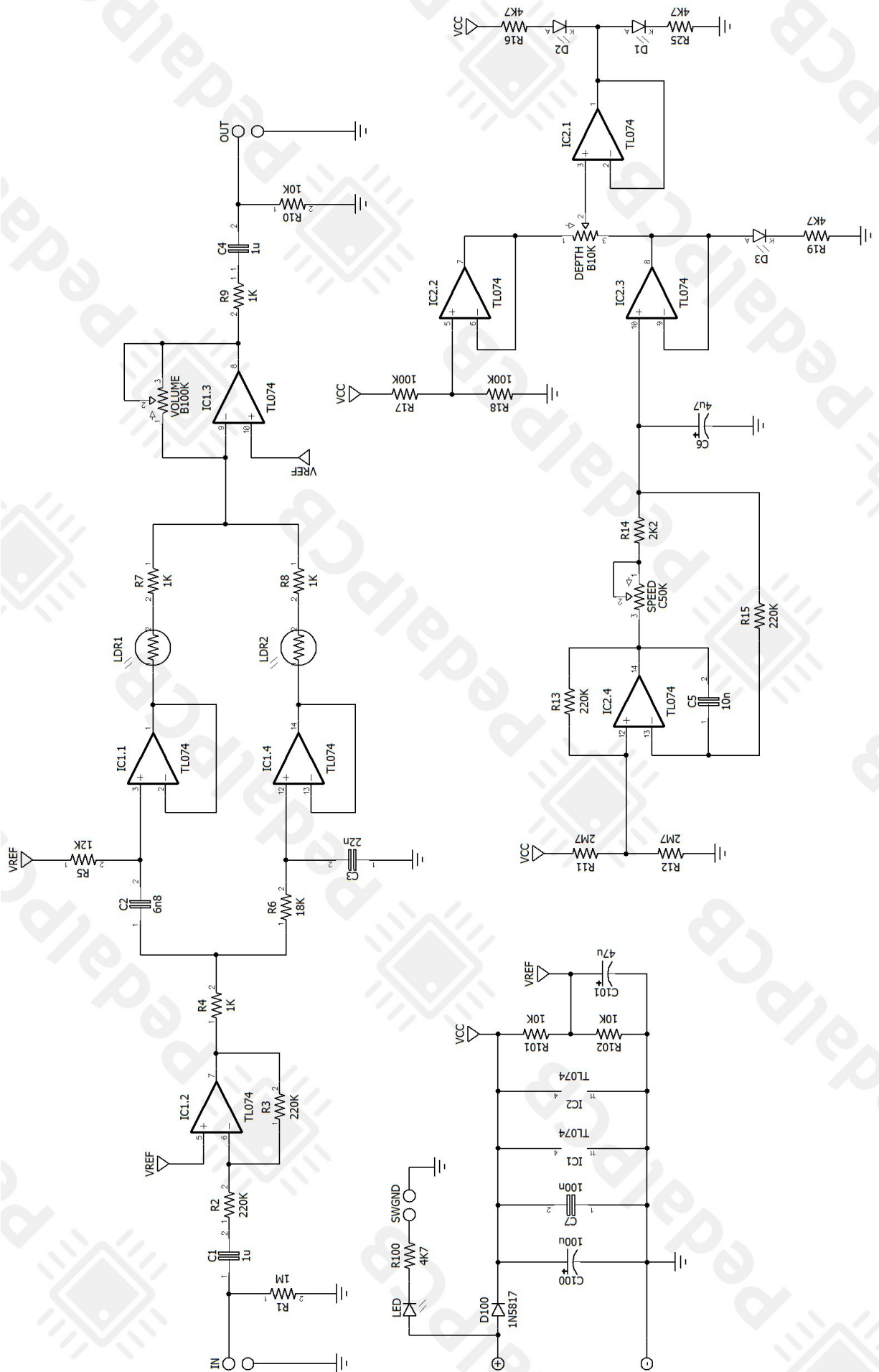
- Rate
- Depth
- Volume

All trademarks and registered trademarks are the property of their respective owners. The company, product, and service names used in this web site are for identification purposes only. Use of these names, logos, and brands does not imply endorsement.

LOCATION	VALUE	TYPE	NOTES
R1	1M	Resistor, 1/4W	
R2	220K	Resistor, 1/4W	
R3	220K	Resistor, 1/4W	
R4	1K	Resistor, 1/4W	
R5	12K	Resistor, 1/4W	
R6	18K	Resistor, 1/4W	
R7	1K	Resistor, 1/4W	
R8	1K	Resistor, 1/4W	
R9	1K	Resistor, 1/4W	
R10	10K	Resistor, 1/4W	
R11	2M7	Resistor, 1/4W	
R12	2M7	Resistor, 1/4W	
R13	220K	Resistor, 1/4W	
R14	2K2	Resistor, 1/4W	
R15	220K	Resistor, 1/4W	
R16	4K7	Resistor, 1/4W	
R17	100K	Resistor, 1/4W	
R18	100K	Resistor, 1/4W	
R19	4K7	Resistor, 1/4W	
R25	4K7	Resistor, 1/4W	
R100	4K7	Resistor, 1/4W	
R101	10K	Resistor, 1/4W	
R102	10K	Resistor, 1/4W	
C1	1u	Film capacitor, 7.2 x 5.0mm	
C2	6n8	Film capacitor, 7.2 x 2.5mm	
C3	22n	Film capacitor, 7.2 x 2.5mm	
C4	1u	Film capacitor, 7.2 x 5.0mm	
C5	10n	Film capacitor, 7.2 x 2.5mm	
C6	4u7	Electrolytic capacitor, 5mm	
C7	100n	Film capacitor, 7.2 x 2.5mm	
C100	100u	Electrolytic capacitor, 5mm	
C101	47u	Electrolytic capacitor, 5mm	
D1	LED	3mm Red LED, Diffused	
D2	LED	3mm Red LED, Diffused	
D3	LED	LFO Rate Indicator LED	
D100	1N5817	Schottky diode, DO-41	
IC1	TL074	Quad op-amp, DIP14	
IC2	TL074	Quad op-amp, DIP14	
LDR1	LDR	Light Dependant Resistor	KE-10720 or GL5516
LDR2	LDR	Light Dependant Resistor	KE-10720 or GL5516
SPEED	C50K	16mm right-angle PCB mount pot	
VOLUME	B100K	16mm right-angle PCB mount pot	
DEPTH	B10K	16mm right-angle PCB mount pot	

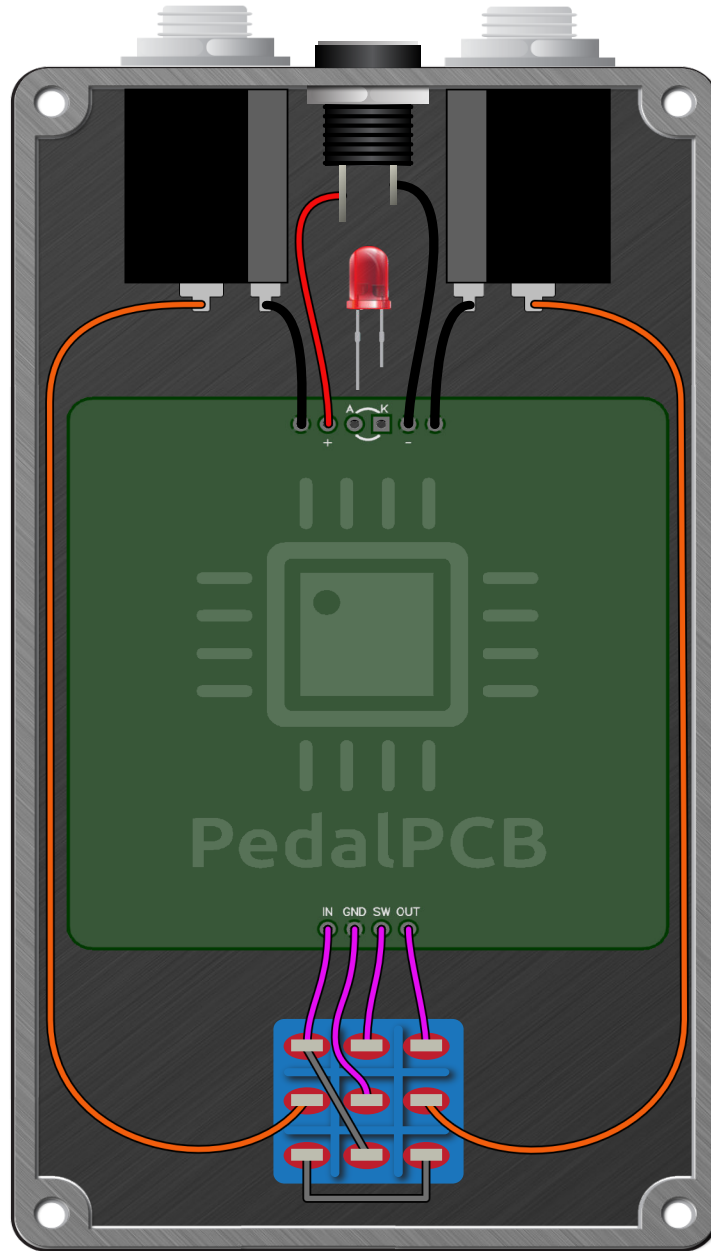
Pendulum Tremolo

Schematic Diagram



Pendulum Tremolo

Wiring Diagram



Pendulum Tremolo

Drill Template
125B Enclosure

