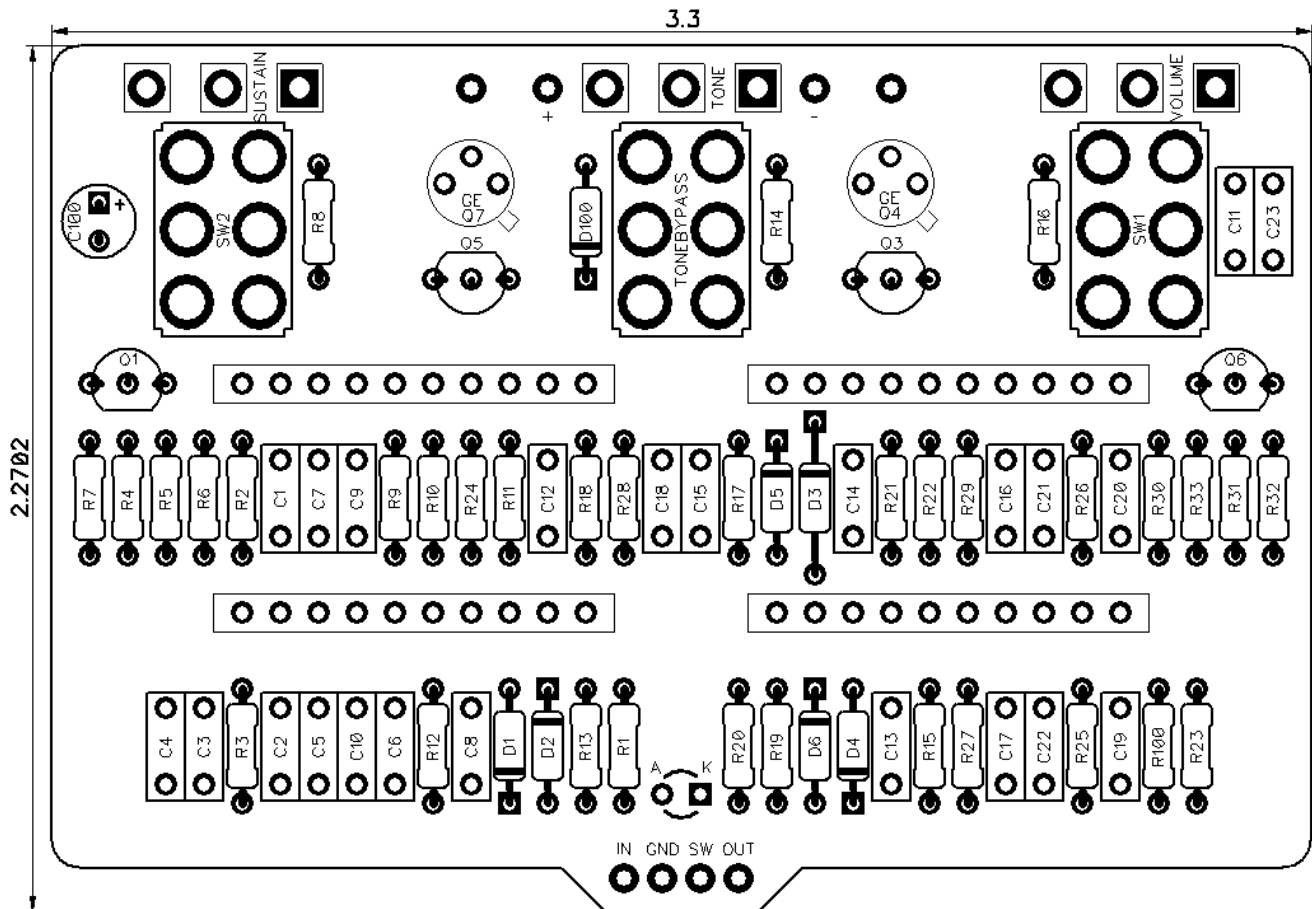




# PedalPCB

## Muffin Factory (Revision 1)

Revision 04.14.19



### Controls

- Volume
- Tone
- Sustain
- Stage 1 (Toggle Switch)
- Stage 2 (Toggle Switch)
- DIP Switch (1 - 20)

All trademarks and registered trademarks are the property of their respective owners. The company, product, and service names used in this web site are for identification purposes only. Use of these names, logos, and brands does not imply endorsement.

**RESISTORS (1/4W)**

R1 1M  
 R2 47K  
 R3 110K  
 R4 82K  
 R5 390K  
 R6 22K  
 R7 100R  
 R8 1K  
 R9 11K  
 R10 33K  
 R11 82K  
 R12 1M3  
 R13 560K  
 R14 120R  
 R15 12K  
 R16 1K2  
 R17 15K  
 R18 18K  
 R19 82K  
 R20 910K  
 R21 680K  
 R22 120R  
 R23 22K  
 R24 1K2  
 R25 130K  
 R26 56K  
 R27 130K  
 R28 100K  
 R29 56K  
 R30 390K  
 R31 100K  
 R32 12K  
 R33 2K7  
 R100 4K7

**CAPACITORS**

C1 100n  
 C2 22n  
 C3 560p  
 C4 100n  
 C5 22n  
 C6 100n  
 C7 22n  
 C8 100n  
 C9 47n  
 C10 560p  
 C11 100n  
 C12 22n  
 C13 100n  
 C14 47n  
 C15 560p  
 C16 6n8  
 C17 39n  
 C18 100n  
 C19 10n  
 C20 100n  
 C21 22n  
 C22 100n  
 C23 100n  
 C100 100u

**TRANSISTORS**

Q1 2N5088  
 Q2 106NU70 (55 - 65 hfe)  
 Q3 MPSA18  
 Q4 106NU70 (55 - 65 hfe)  
 Q5 MPSA18  
 Q6 2N5088

**DIODES**

D1 1N914  
 D2 1N914  
 D3 GE  
 D4 1N914  
 D5 1N914  
 D6 1N914  
 D100 1N5817

**POTENTIOMETERS**

VOLUME A100K  
 TONE B100K  
 SUSTAIN B100K

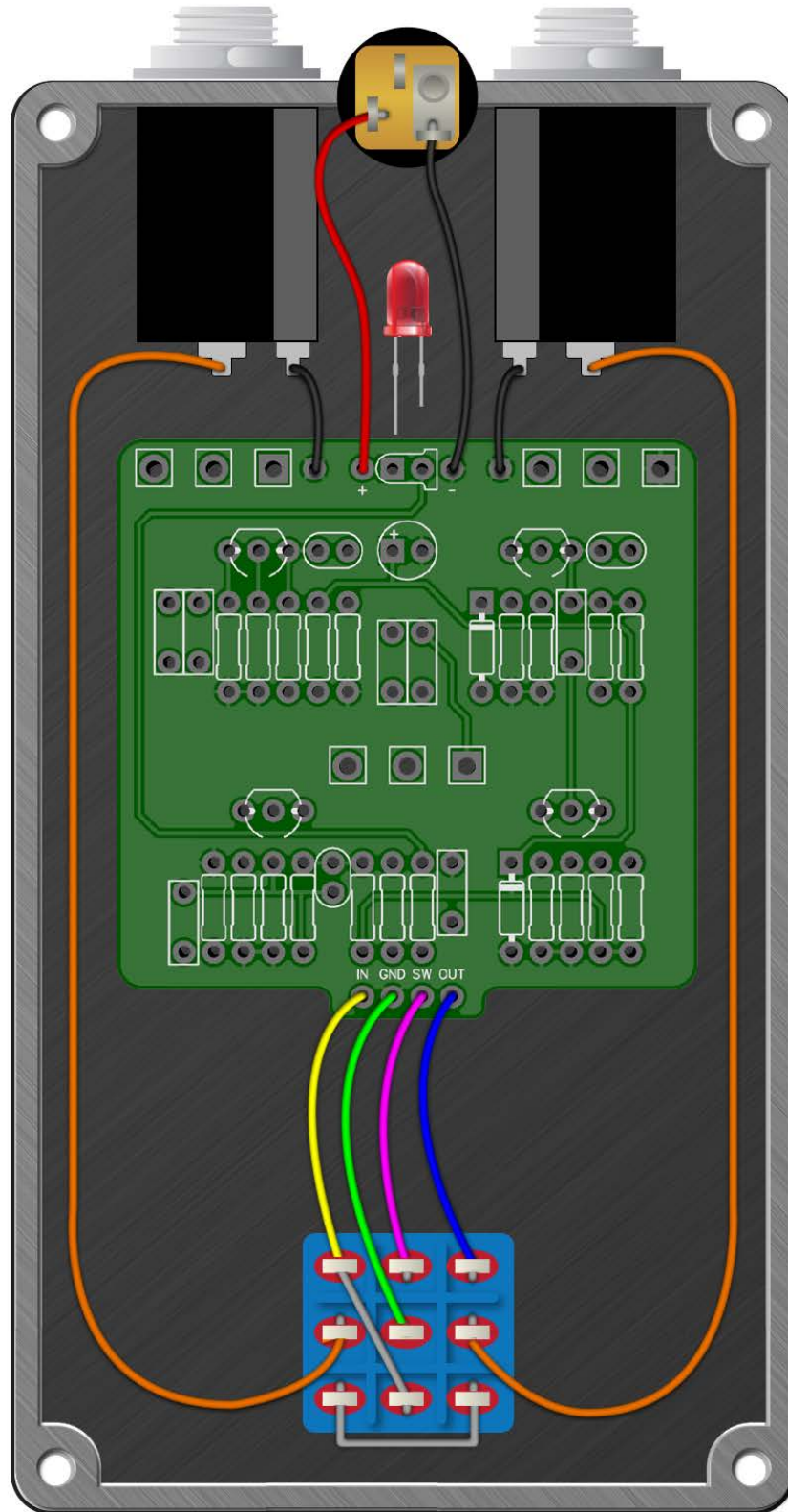
**SWITCHES**

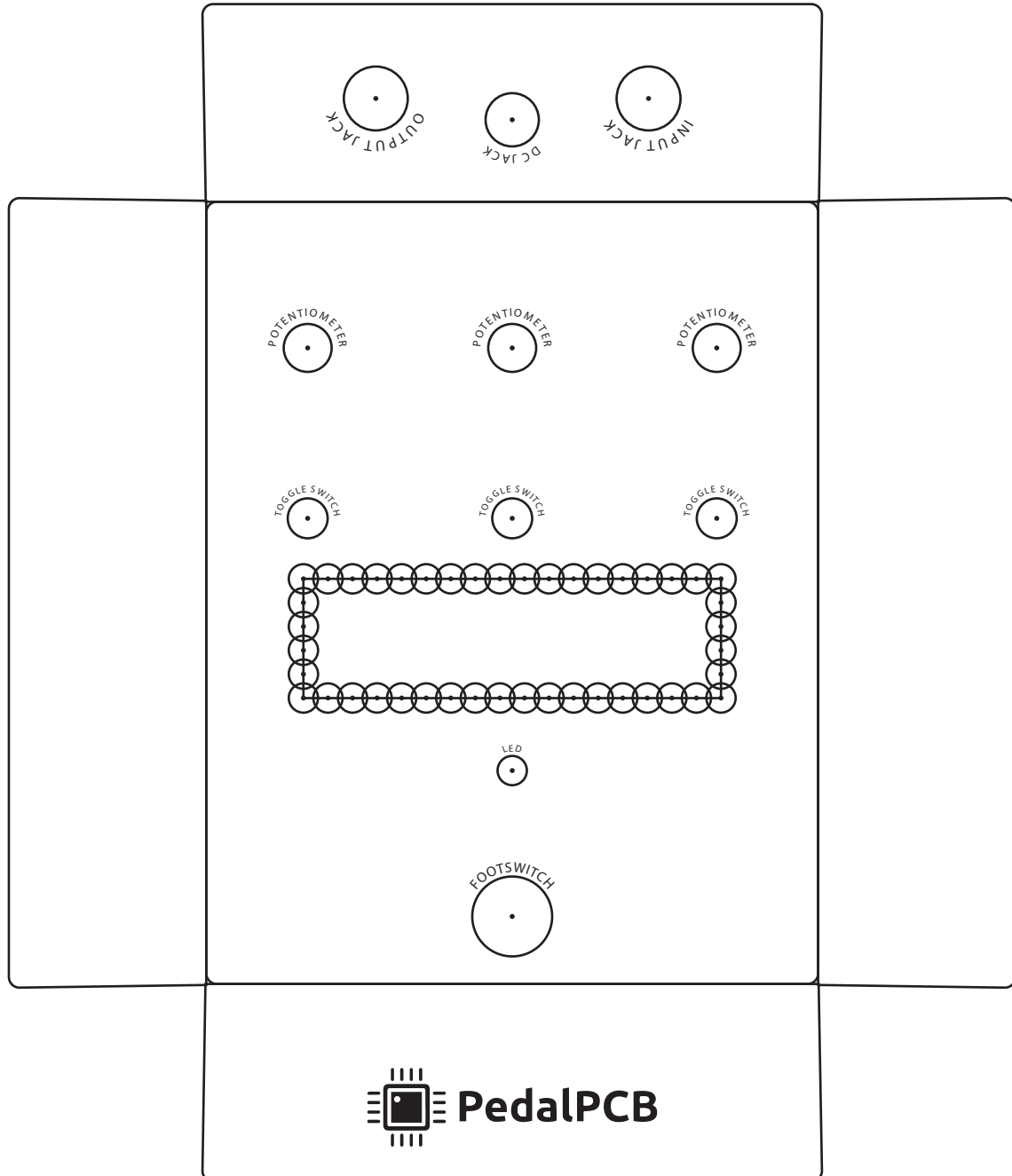
SW1 DPDT ON/ON Toggle  
 SW2 DPDT ON/ON Toggle  
 TONEBYPASS DPDT ON/ON Toggle

DIP1 DIP-10 Dip Switch  
 DIP2 DIP-10 Dip Switch

**PIN HEADERS**

4 x 10 PIN 2.54mm Pin Header Strip





### Instructions for drilling rectangular cutout

- 1) Punch and drill each marked hole with 1/8" drill bit
- 2) Re-drill each hole using 11/64" drill bit
- 3) Remove burrs using metal file (OPTIONAL)
- 4) If needed, insulate dipswitch module pins with hot glue or electrical/kapton tape to prevent contact with metal enclosure.