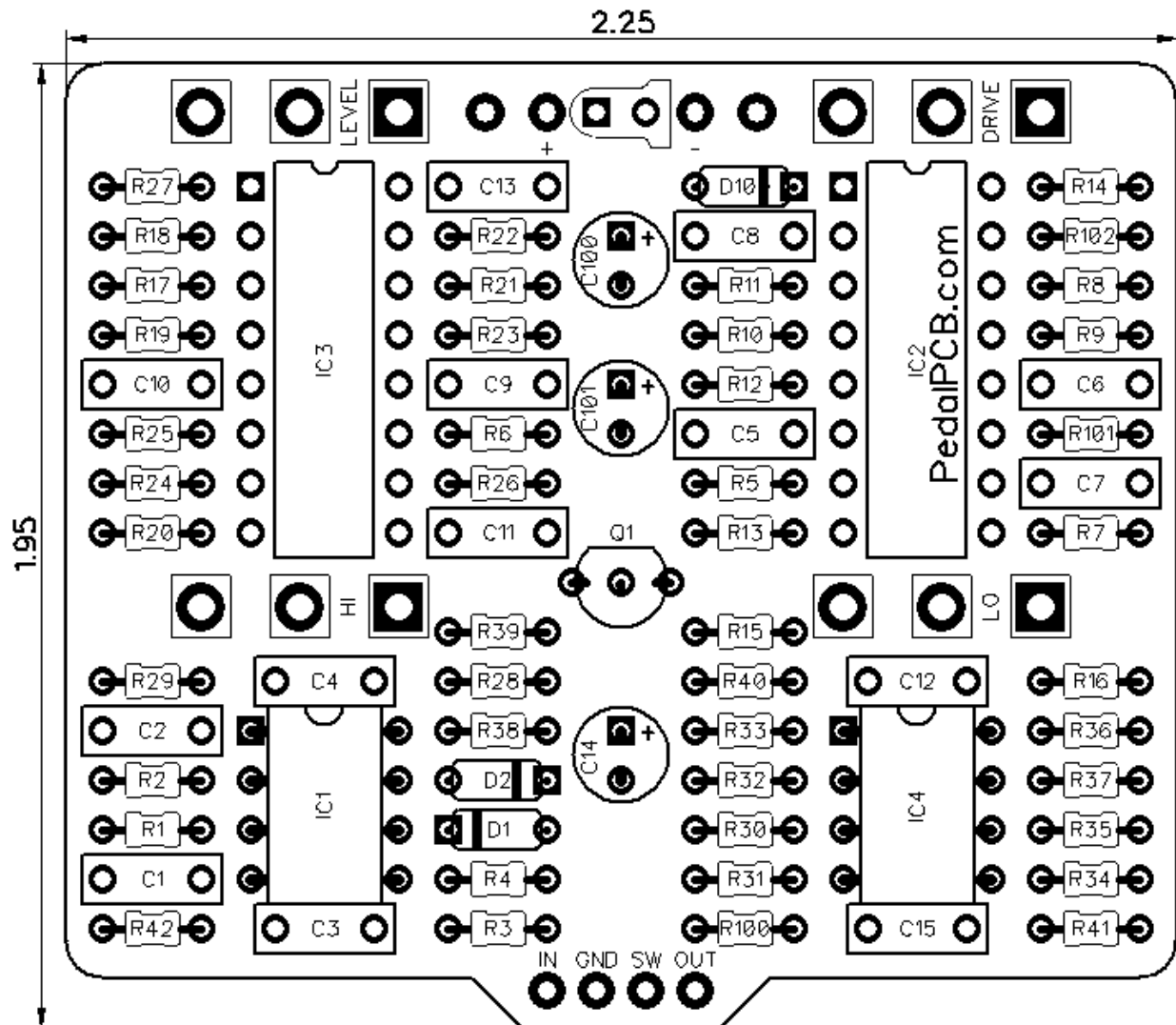




# PedalPCB

## Lofinator

Revision 03.08.19



### Controls

- **Drive** - Controls the amount of signal distortion
- **Level** - Sets the overall output volume
- **Lo** - Controls the low cut frequency
- **Hi** - Controls the hi cut frequency

All trademarks and registered trademarks are the property of their respective owners. The company, product, and service names used in this web site are for identification purposes only. Use of these names, logos, and brands does not imply endorsement.

**RESISTORS**

R1 1K  
R2 470K  
R3 2K2  
R4 2K2  
R5 240K  
R6 10K  
R7 100K  
R8 1K  
R9 1K  
R10 100K  
R11 1K  
R12 1K  
R13 10K  
R14 10K  
R15 3K  
R16 3K9  
R17 27K  
R18 220  
R19 220  
R20 27K  
R21 220  
R22 27K  
R23 220  
R24 10K  
R25 10K  
R26 27K  
R27 2K2  
R28 7K5  
R29 2K2  
R30 10K  
R31 8K2  
R32 10K  
R33 10K  
R34 100K  
R35 10K  
R36 10K  
R37 4K7  
R38 10K  
R39 510K  
R40 470  
R41 100K  
R42 100K  
R100 4K7  
R101 10K  
R102 10K

**CAPACITORS**

C1 100n  
C2 39n  
C3 68p  
C4 150n  
C5 10n  
C6 22n  
C7 8n2  
C8 22n  
C9 2n2  
C10 1n2  
C11 1u  
C12 68p  
C13 1u  
C14 10u  
C15 12n  
C100 100u  
C101 220u

**INTEGRATED CIRCUITS**

IC1 NJM4558D  
IC2 NJM13600  
IC3 NJM13600  
IC4 NJM4558D

**TRANSISTORS**

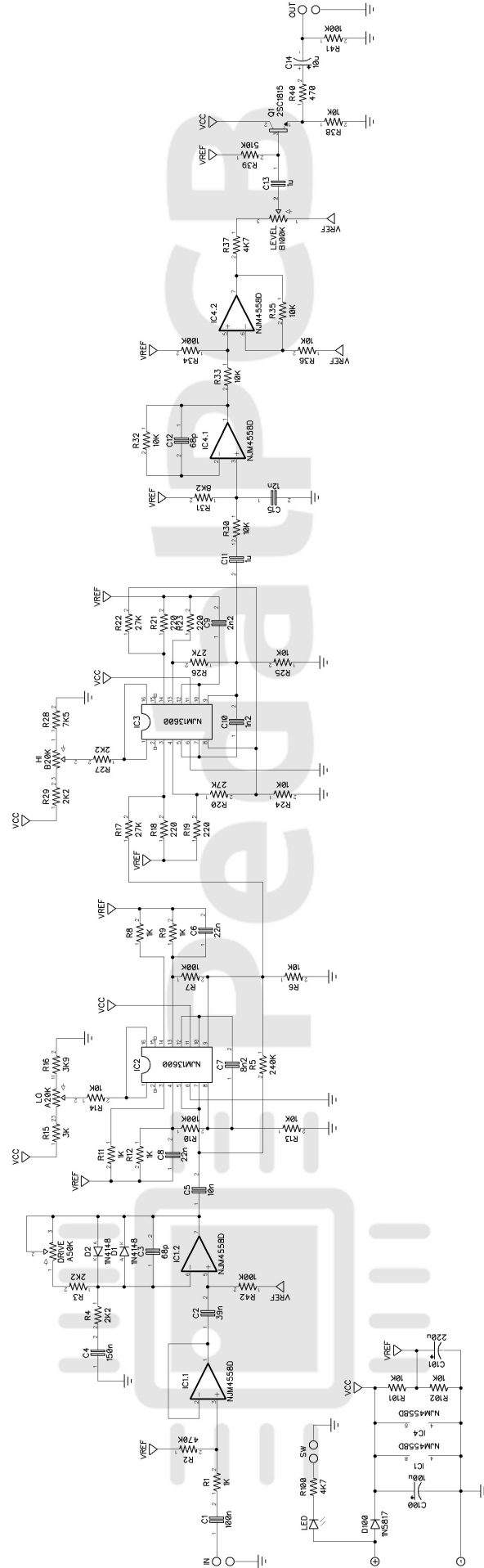
Q1 2SC1815

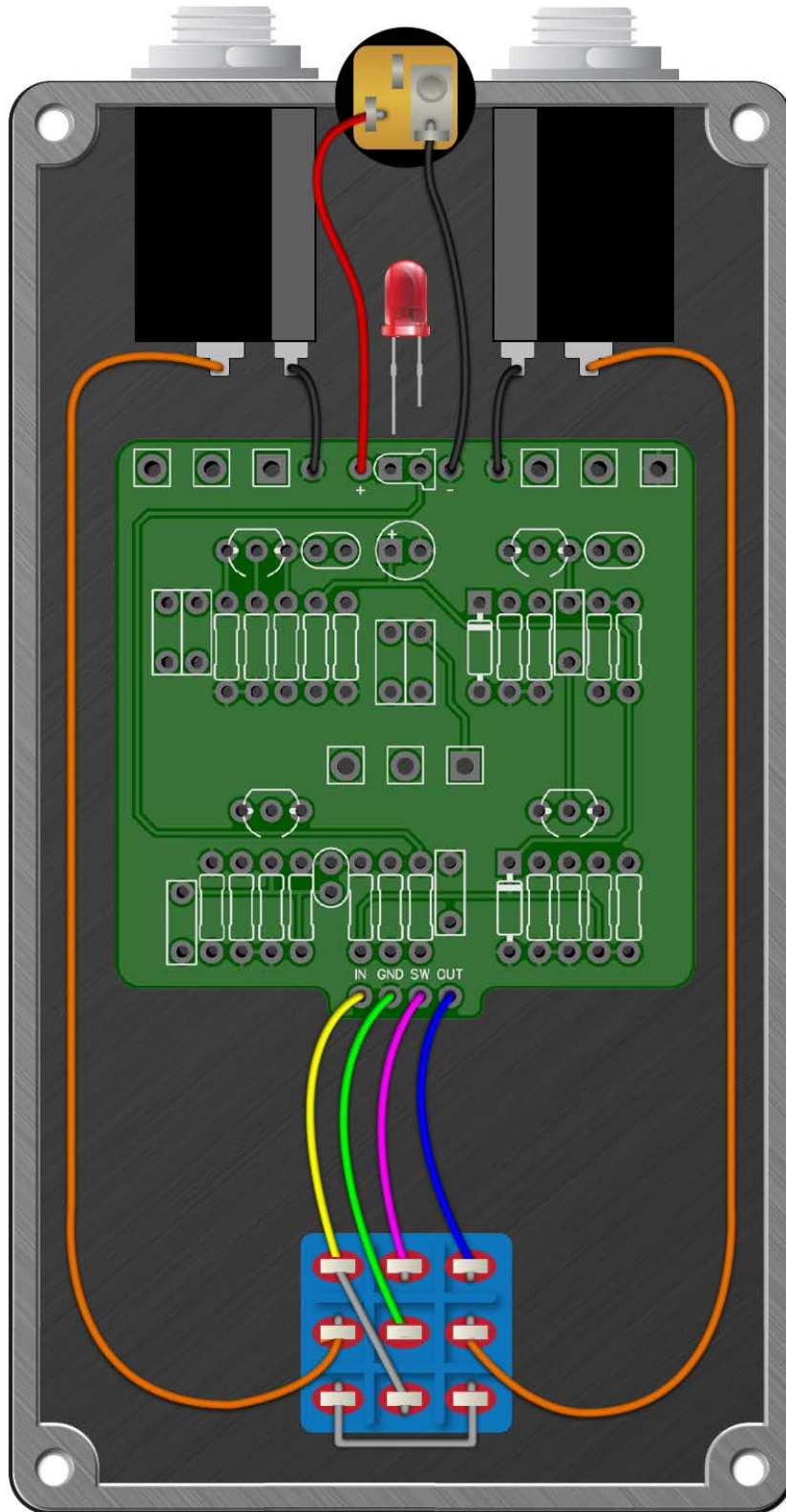
**DIODES**

D1 1N4148  
D2 1N4148  
D100 1N5817

**POTENTIOMETERS**

DRIVE A50K  
LEVEL B100K  
LO A20K  
HI B20K





# Lofinator

Drill Template  
125B enclosure with top mounted jacks

