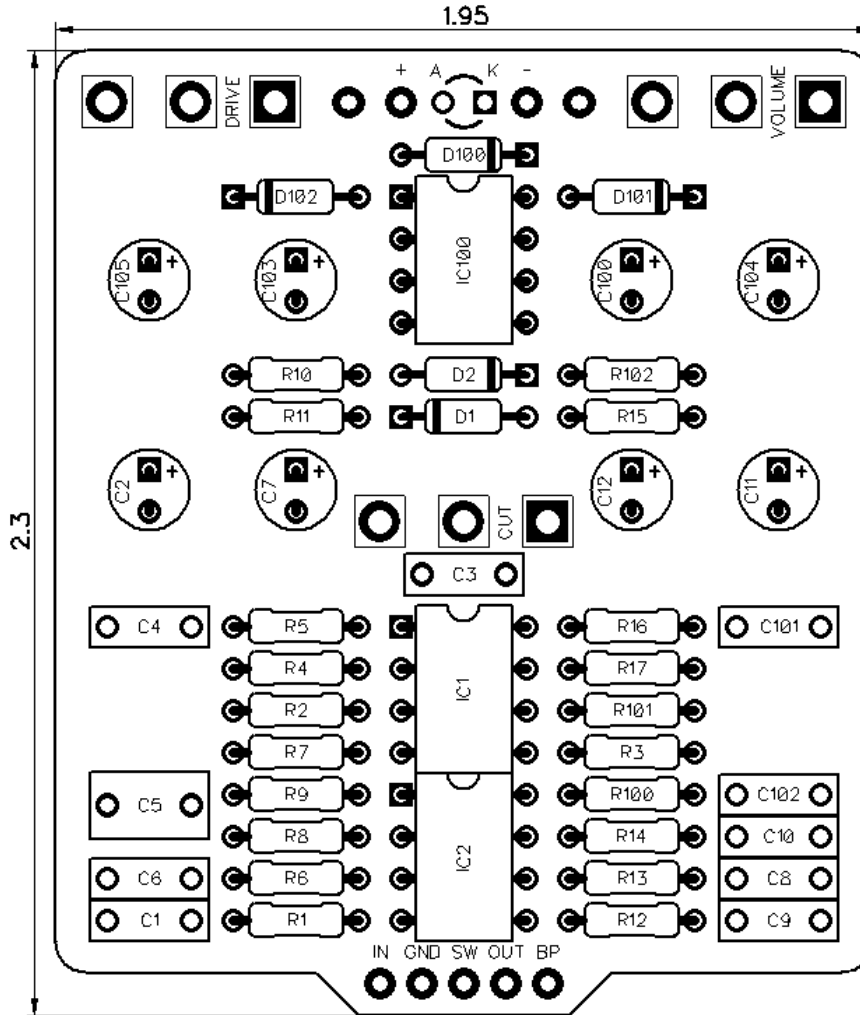


# PedalPCB

## Informant Overdrive

Revision 06.13.19



### Controls

- Drive
- Cut
- Volume

All trademarks and registered trademarks are the property of their respective owners. The company, product, and service names used in this web site are for identification purposes only. Use of these names, logos, and brands does not imply endorsement.

**RESISTORS (1/4W)**

R1	2M2
R2	1K
R3	2M2
R4	2K2
R5	10K
R6	1K
R7	2M2
R8	470R
R9	1K
R10	1K
R11	1K5
R12	2M2
R13	2M2
R14	10K
R15	470R
R16	100K
R17	470R
R100	10K
R101	10K
R102	4K7

**CAPACITORS**

C1	100n	
C2	47u	*25V or Higher
C3	390p	
C4	22n	
C5	220n	
C6	3n3	
C7	4u7	*25V or Higher
C8	3n3	
C9	22n	
C10	3n3	
C11	4u7	*25V or Higher
C12	4u7	*25V or Higher
C100	100u	
C101	100n	
C102	100n	
C103	10u	*25V or Higher
C104	10u	*25V or Higher
C105	47u	

**INTEGRATED CIRCUITS**

IC1	TL072
IC2	TL072
IC100	LT1054*

**DIODES**

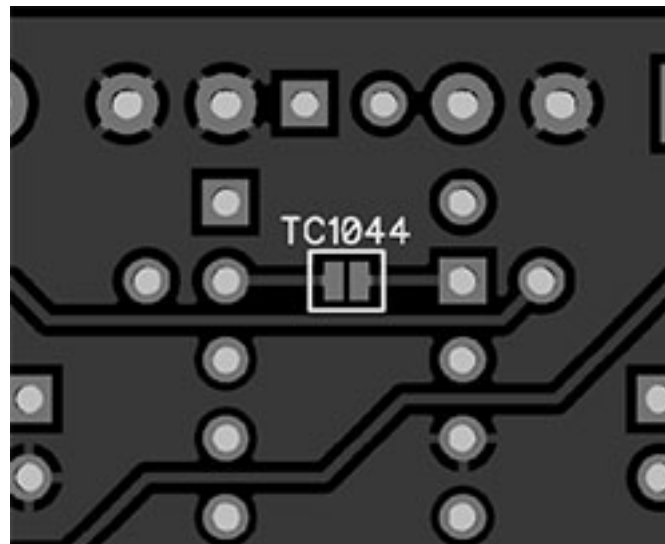
D1	1N914
D2	1N914
D100	1N5817
D101	1N5817
D102	1N5817

**POTENTIOMETERS**

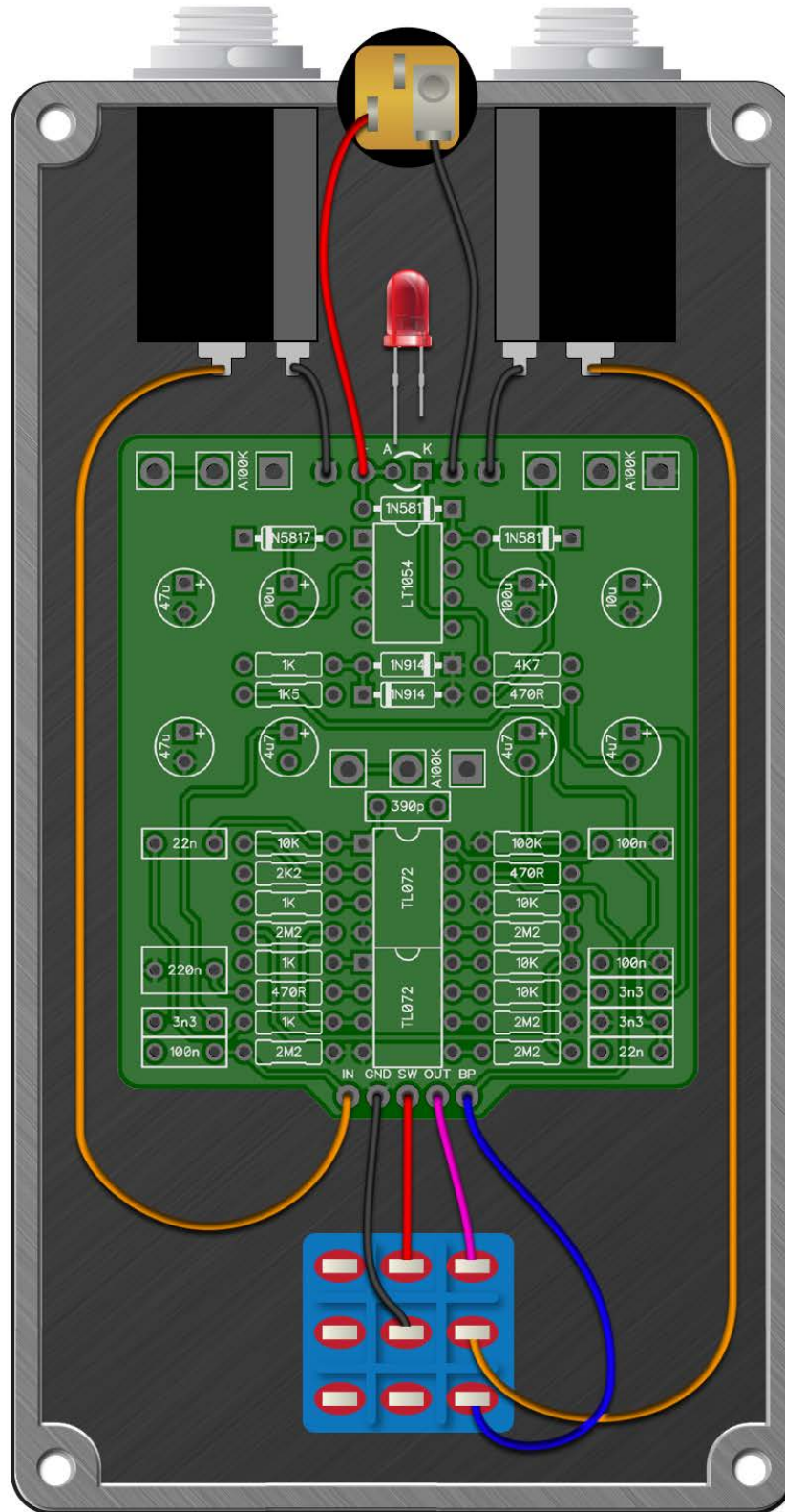
DRIVE	A100K
CUT	A100K
VOLUME	A100K

**ALTERNATE CHARGE PUMP IC OPTION:**

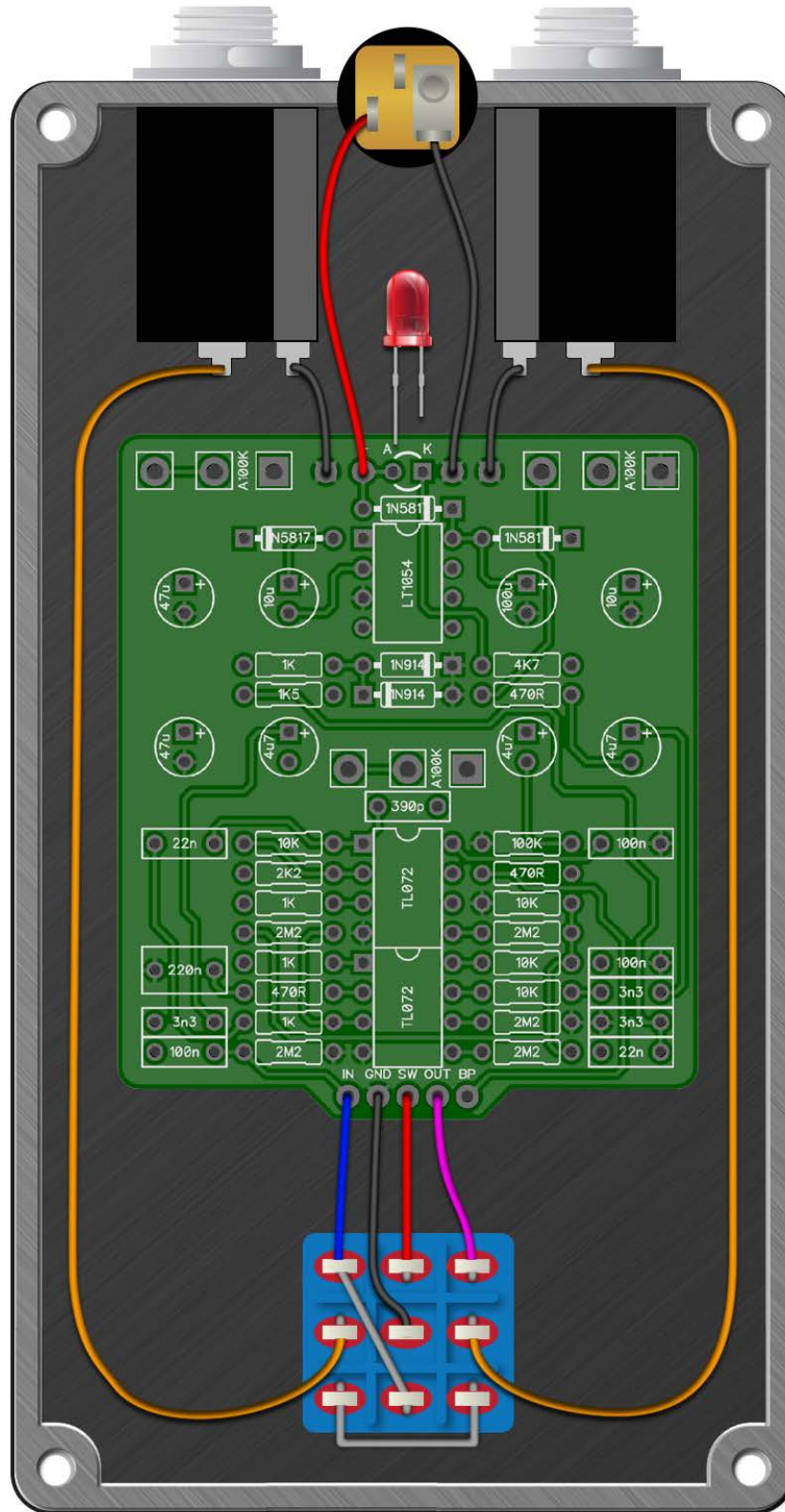
TC1044SCPA or ICL7660SCPA can be used instead of LT1054 by installing a bead of solder across "TC1044" jumper pads on the back of PCB.







## Buffered Bypass Option



## True-Bypass Option

# Informant Overdrive

Drill Template

125B enclosure with top mounted jacks

