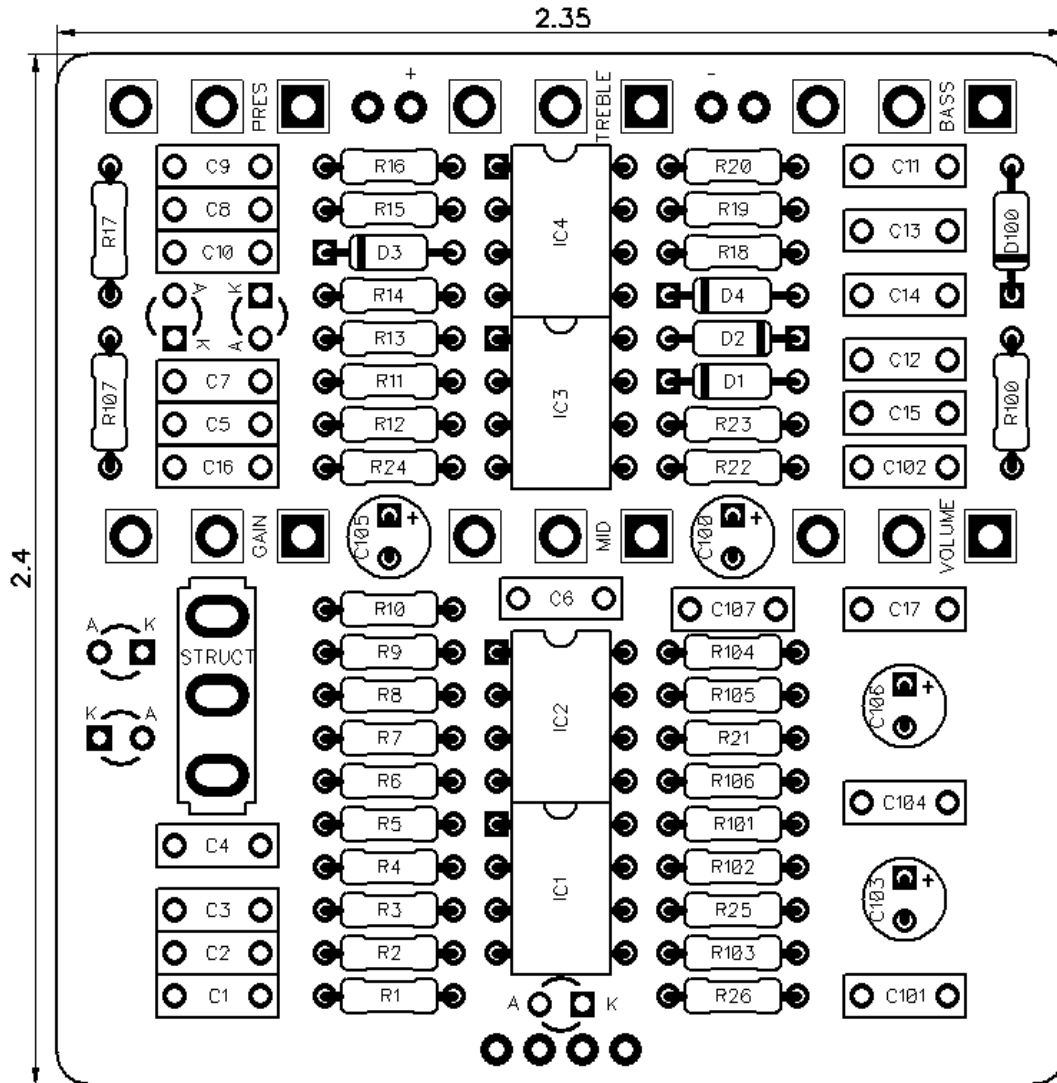


# PedalPCB

## Complex Overdrive

Revised 4/7/21



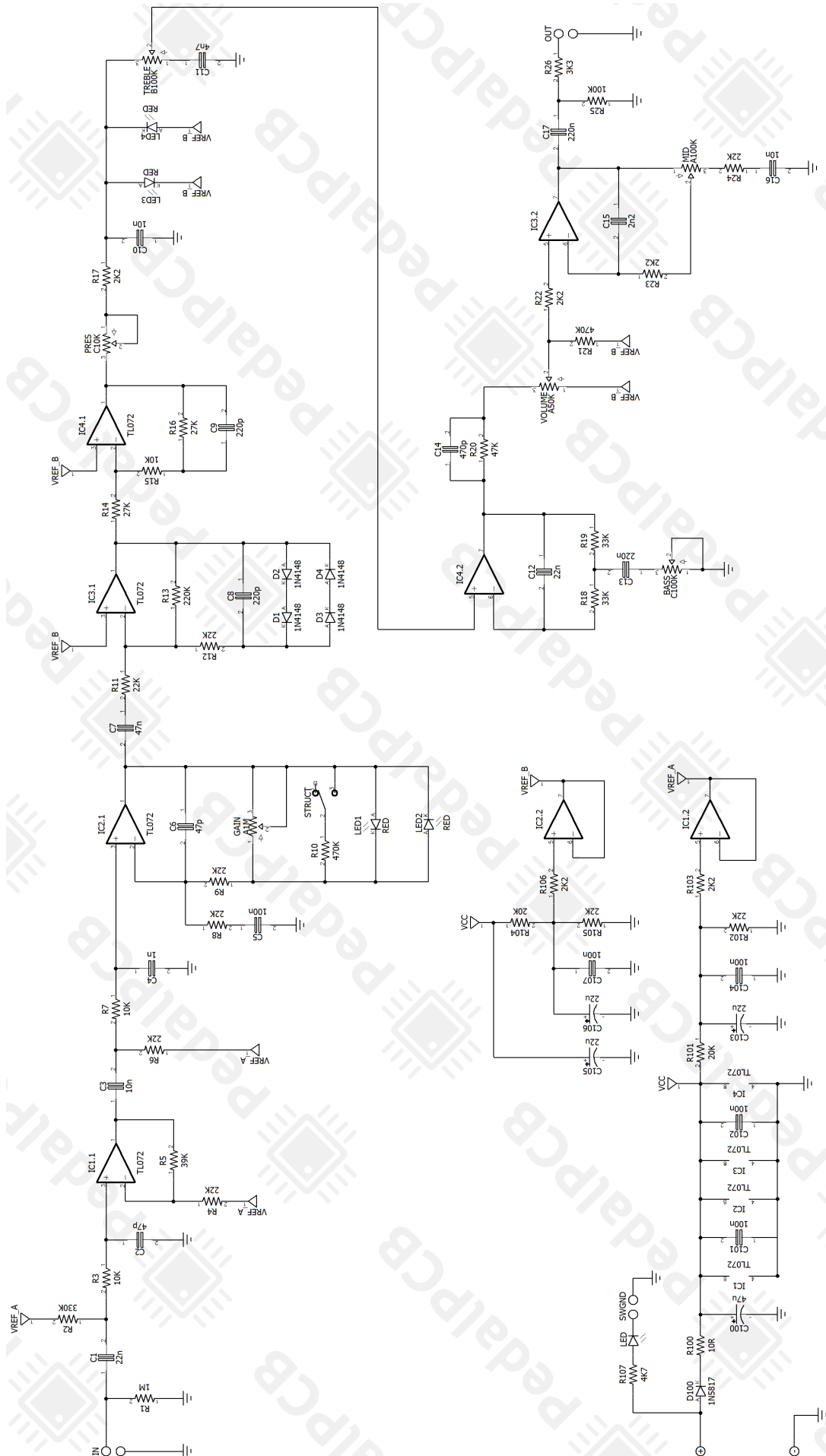
## CONTROLS AND FEATURES

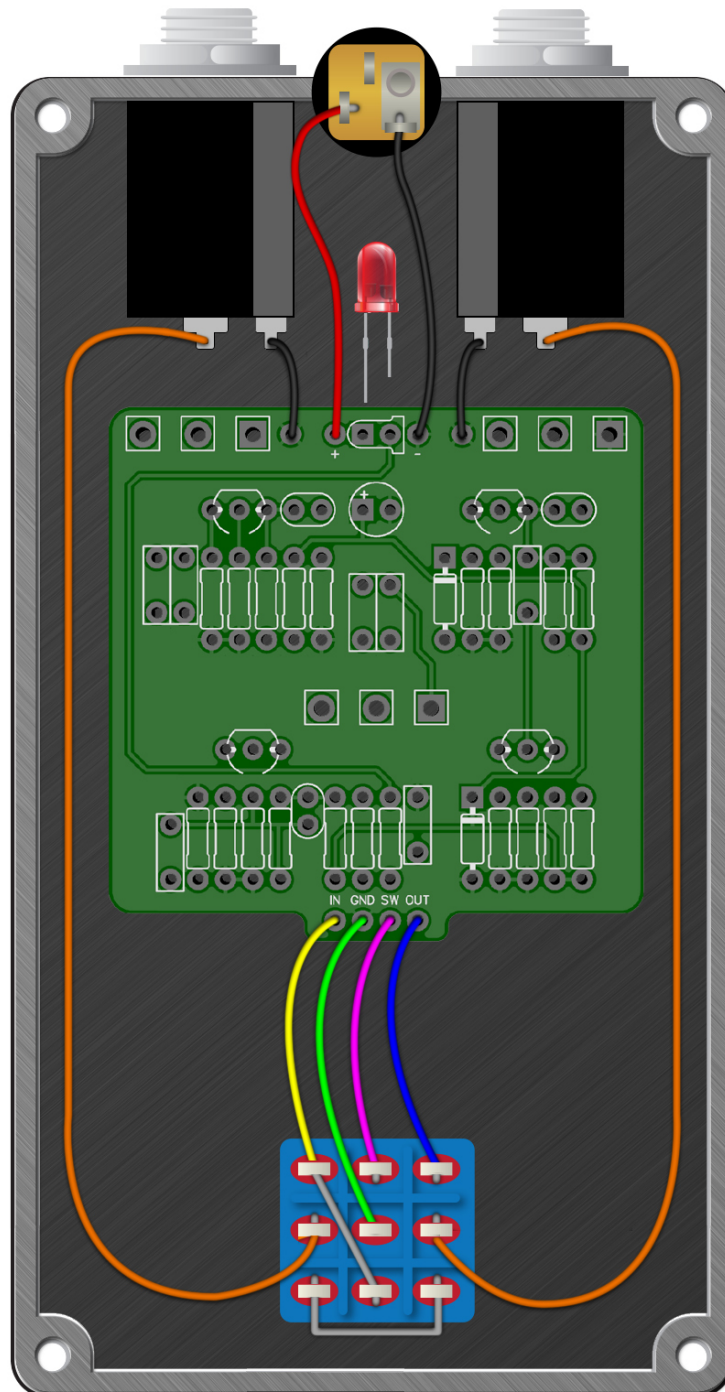
- Bass
- Treble
- Presence
- Volume
- Mid
- Gain
- Structure (Toggle Switch)

*All trademarks and registered trademarks are the property of their respective owners. The company, product, and service names used in this web site are for identification purposes only. Use of these names, logos, and brands does not imply endorsement.*

LOCATION	VALUE	TYPE	NOTES
R1	1M	Resistor, 1/4W	
R2	330K	Resistor, 1/4W	
R3	10K	Resistor, 1/4W	
R4	22K	Resistor, 1/4W	
R5	39K	Resistor, 1/4W	
R6	22K	Resistor, 1/4W	
R7	10K	Resistor, 1/4W	
R8	22K	Resistor, 1/4W	
R9	22K	Resistor, 1/4W	
R10	470K	Resistor, 1/4W	
R11	22K	Resistor, 1/4W	
R12	22K	Resistor, 1/4W	
R13	220K	Resistor, 1/4W	
R14	27K	Resistor, 1/4W	
R15	10K	Resistor, 1/4W	
R16	27K	Resistor, 1/4W	
R17	2K2	Resistor, 1/4W	
R18	33K	Resistor, 1/4W	
R19	33K	Resistor, 1/4W	
R20	47K	Resistor, 1/4W	
R21	470K	Resistor, 1/4W	
R22	2K2	Resistor, 1/4W	
R23	2K2	Resistor, 1/4W	
R24	22K	Resistor, 1/4W	
R25	100K	Resistor, 1/4W	
R26	3K3	Resistor, 1/4W	
R100	10R	Resistor, 1/4W	
R101	20K	Resistor, 1/4W	
R102	22K	Resistor, 1/4W	
R103	2K2	Resistor, 1/4W	
R104	20K	Resistor, 1/4W	
R105	22K	Resistor, 1/4W	
R106	2K2	Resistor, 1/4W	
R107	4K7	Resistor, 1/4W	
C1	22n	Film capacitor, 7.2 x 2.5mm	
C2	47p	Ceramic capacitor	
C3	10n	Film capacitor, 7.2 x 2.5mm	
C4	1n	Film capacitor, 7.2 x 2.5mm	
C5	100n	Film capacitor, 7.2 x 2.5mm	
C6	47p	Ceramic capacitor	
C7	47n	Film capacitor, 7.2 x 2.5mm	
C8	220p	Ceramic capacitor	
C9	220p	Ceramic capacitor	
C10	10n	Film capacitor, 7.2 x 2.5mm	
C11	4n7	Film capacitor, 7.2 x 2.5mm	
C12	22n	Film capacitor, 7.2 x 2.5mm	
C13	220n	Film capacitor, 7.2 x 5.0mm	

LOCATION	VALUE	TYPE	NOTES
C14	470p	Ceramic capacitor	
C15	2n2	Film capacitor, 7.2 x 2.5mm	
C16	10n	Film capacitor, 7.2 x 2.5mm	
C17	220n	Film capacitor, 7.2 x 5.0mm	
C100	47u	Electrolytic capacitor, 5mm	
C101	100n	Film capacitor, 7.2 x 2.5mm	
C102	100n	Film capacitor, 7.2 x 2.5mm	
C103	22u	Electrolytic capacitor, 5mm	
C104	100n	Film capacitor, 7.2 x 2.5mm	
C105	22u	Electrolytic capacitor, 5mm	
C106	22u	Electrolytic capacitor, 5mm	
C107	100n	Film capacitor, 7.2 x 2.5mm	
D1	1N4148	Signal diode, DO-35	
D2	1N4148	Signal diode, DO-35	
D3	1N4148	Signal diode, DO-35	
D4	1N4148	Signal diode, DO-35	
D100	1N5817	Schottky diode, DO-41	
LED1	3mm Red LED	3mm Red LED, Diffused	
LED2	3mm Red LED	3mm Red LED, Diffused	
LED3	3mm Red LED	3mm Red LED, Diffused	
LED4	3mm Red LED	3mm Red LED, Diffused	
IC1	TL072	Dual op-amp, DIP8	
IC2	TL072	Dual op-amp, DIP8	
IC3	TL072	Dual op-amp, DIP8	
IC4	TL072	Dual op-amp, DIP8	
BASS	C100K	16mm right-angle PCB mount pot	
TREBLE	B100K	16mm right-angle PCB mount pot	
PRES	C10K	16mm right-angle PCB mount pot	
VOLUME	A50K	16mm right-angle PCB mount pot	
MID	A100K	16mm right-angle PCB mount pot	
GAIN	A1M	16mm right-angle PCB mount pot	
STRUCTURE	SPDT	Toggle switch, SPDT (ON/ON)	





# Complex Overdrive

Drill Template  
125B Enclosure

