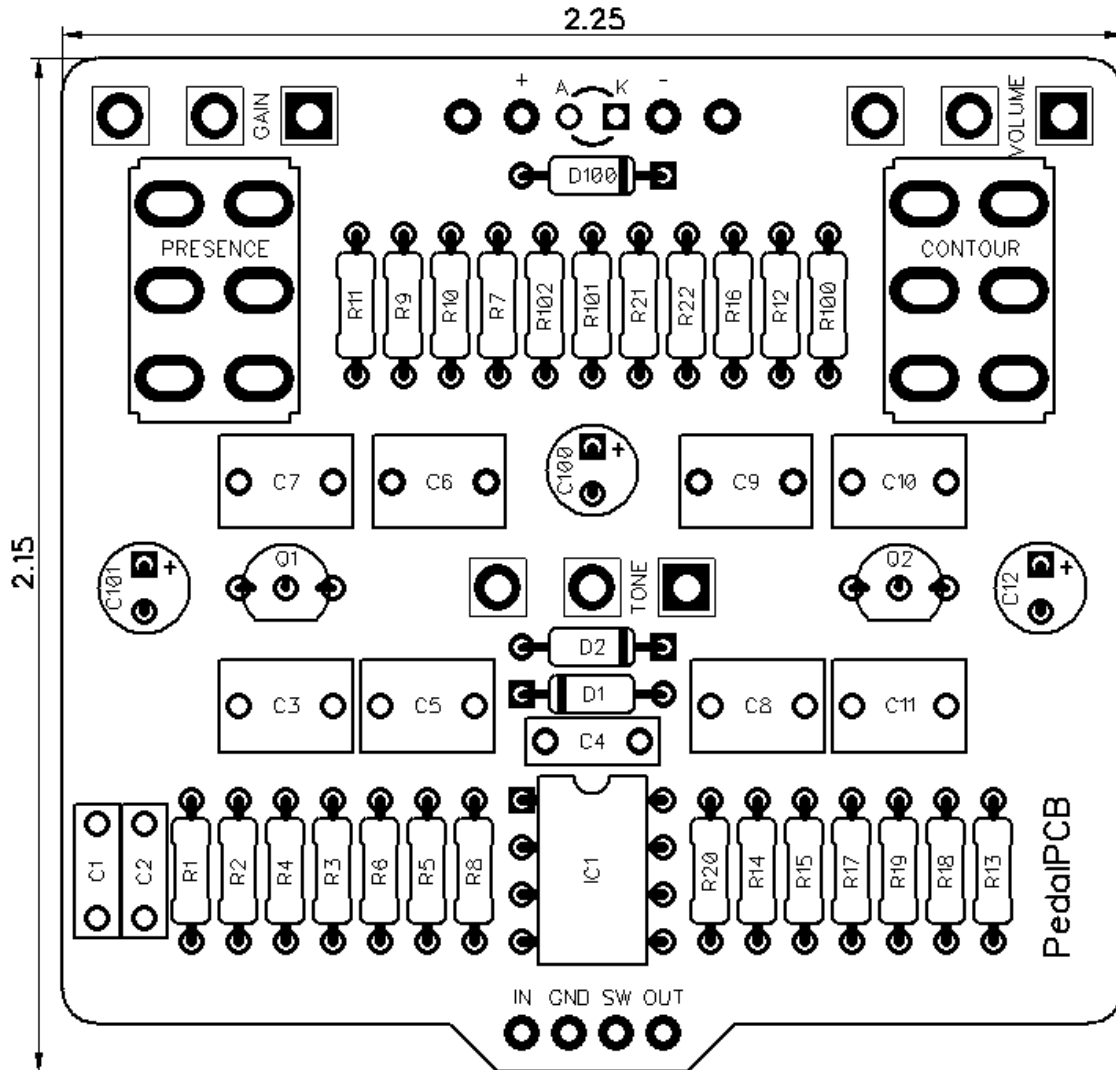


PedalPCB

Boteh Overdrive

Revised 12/29/20



CONTROLS AND FEATURES

- Volume
- Gain
- Tone
- Contour (Toggle switch)
- Presence (Toggle switch)

All trademarks and registered trademarks are the property of their respective owners. The company, product, and service names used in this web site are for identification purposes only. Use of these names, logos, and brands does not imply endorsement.

LOCATION	VALUE	TYPE	NOTES
R1	100R	Resistor, 1/4W	
R2	1M	Resistor, 1/4W	
R3	1K	Resistor, 1/4W	
R4	10K	Resistor, 1/4W	
R5	511K	Resistor, 1/4W	
R6	10K	Resistor, 1/4W	
R7	10K	Resistor, 1/4W	
R8	2K2	Resistor, 1/4W	
R9	1K	Resistor, 1/4W	
R10	300R	Resistor, 1/4W	
R11	200R	Resistor, 1/4W	
R12	240R	Resistor, 1/4W	
R13	10K	Resistor, 1/4W	
R14	1K	Resistor, 1/4W	
R15	220R	Resistor, 1/4W	
R16	1K	Resistor, 1/4W	
R17	10K	Resistor, 1/4W	
R18	511K	Resistor, 1/4W	
R19	100R	Resistor, 1/4W	
R20	10K	Resistor, 1/4W	
R21	10K	Resistor, 1/4W	
R22	10K	Resistor, 1/4W	
R100	4K7	Resistor, 1/4W	
R101	10K	Resistor, 1/4W	
R102	10K	Resistor, 1/4W	
C1	100p	Ceramic capacitor	
C2	22n	Film capacitor, 7.2 x 2.5mm	
C3	1u	Film capacitor, 7.2 x 5.0mm	
C4	51p	Ceramic capacitor	
C5	220n	Film capacitor, 7.2 x 5.0mm	
C6	220n	Film capacitor, 7.2 x 5.0mm	
C7	470n	Film capacitor, 7.2 x 5.0mm	
C8	220n	Film capacitor, 7.2 x 5.0mm	
C9	1u	Film capacitor, 7.2 x 5.0mm	
C10	1u	Film capacitor, 7.2 x 5.0mm	
C11	1u	Film capacitor, 7.2 x 5.0mm	
C12	220u	Electrolytic capacitor, 5mm	
C100	220u	Electrolytic capacitor, 5mm	
C101	220u	Electrolytic capacitor, 5mm	
D1	1N4148	Signal diode, DO-35	
D2	1N4148	Signal diode, DO-35	
D100	1N5817	Schottky diode, DO-41	
IC1	JRC4580	Dual op-amp, DIP8	

LOCATION	VALUE	TYPE	NOTES
Q1	J201	JFET transistor, N-channel	
Q2	J201	JFET transistor, N-channel	
VOLUME	B100K	16mm right-angle PCB mount pot	
tone	C25K	16mm right-angle PCB mount pot	
GAIN	A500K	16mm right-angle PCB mount pot	
CONTOUR	ON/ON/ON	Toggle switch, DPDT	3 position (ON/ON/ON) *
PRESENCE	ON/ON	Toggle switch, DPDT	2 position (ON/ON)

NOTE: Contour toggle switch must be **Type-2** DPDT ON/ON/ON

100-DP6-T100B1M1QE (Long Shaft)

<https://lovemyswitches.com/taiway-dpdt-on-on-on-switch-solder-lug-long-shaft/>

100-DP6-T200B1M1QE (Short Shaft)

<https://lovemyswitches.com/taiway-dpdt-on-on-on-switch-solder-lug-short-shaft/>

1MD6T1B1C0M1QE (Long Shaft)

<http://smallbear-electronics.mybigcommerce.com/dpdt-on-on-on-solder-term/>



Boteh Overdrive

Schematic Diagram

