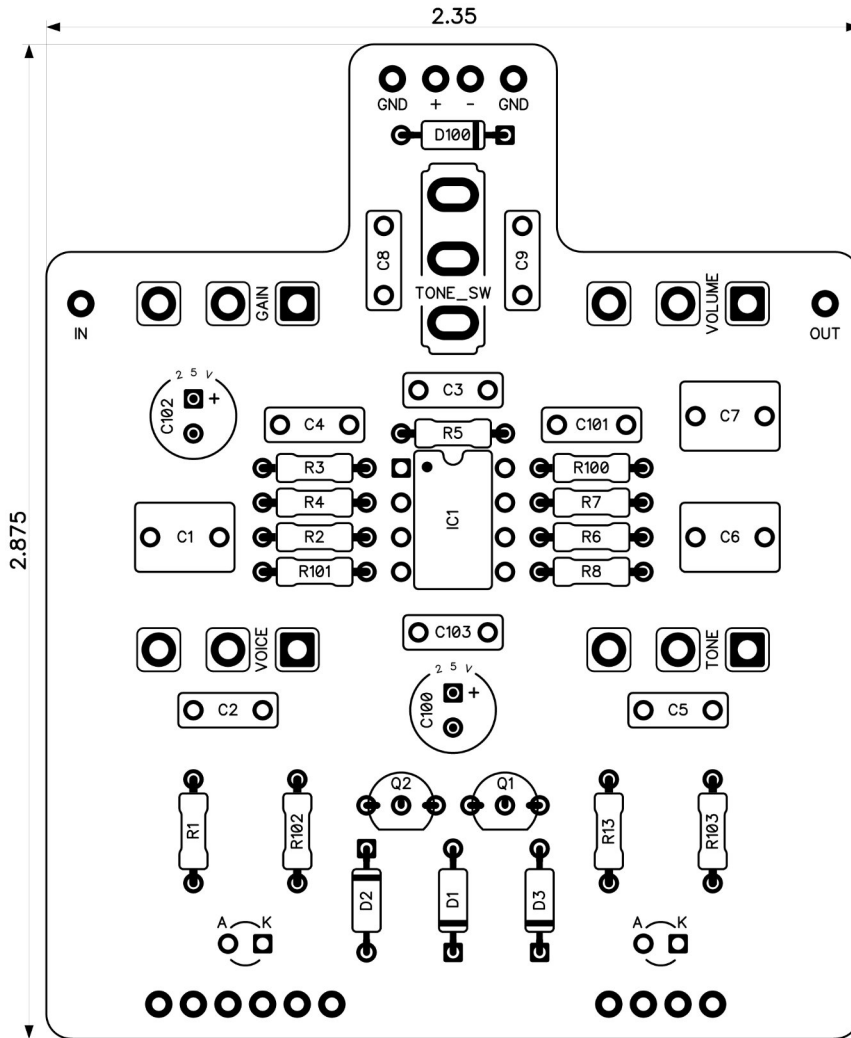


PedalPCB

Peachtree Overdrive

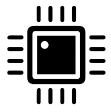
Revised 7/31/22



CONTROLS AND FEATURES

- Volume
- Gain
- Tone
- Voice
- Tone Switch (Toggle Switch)

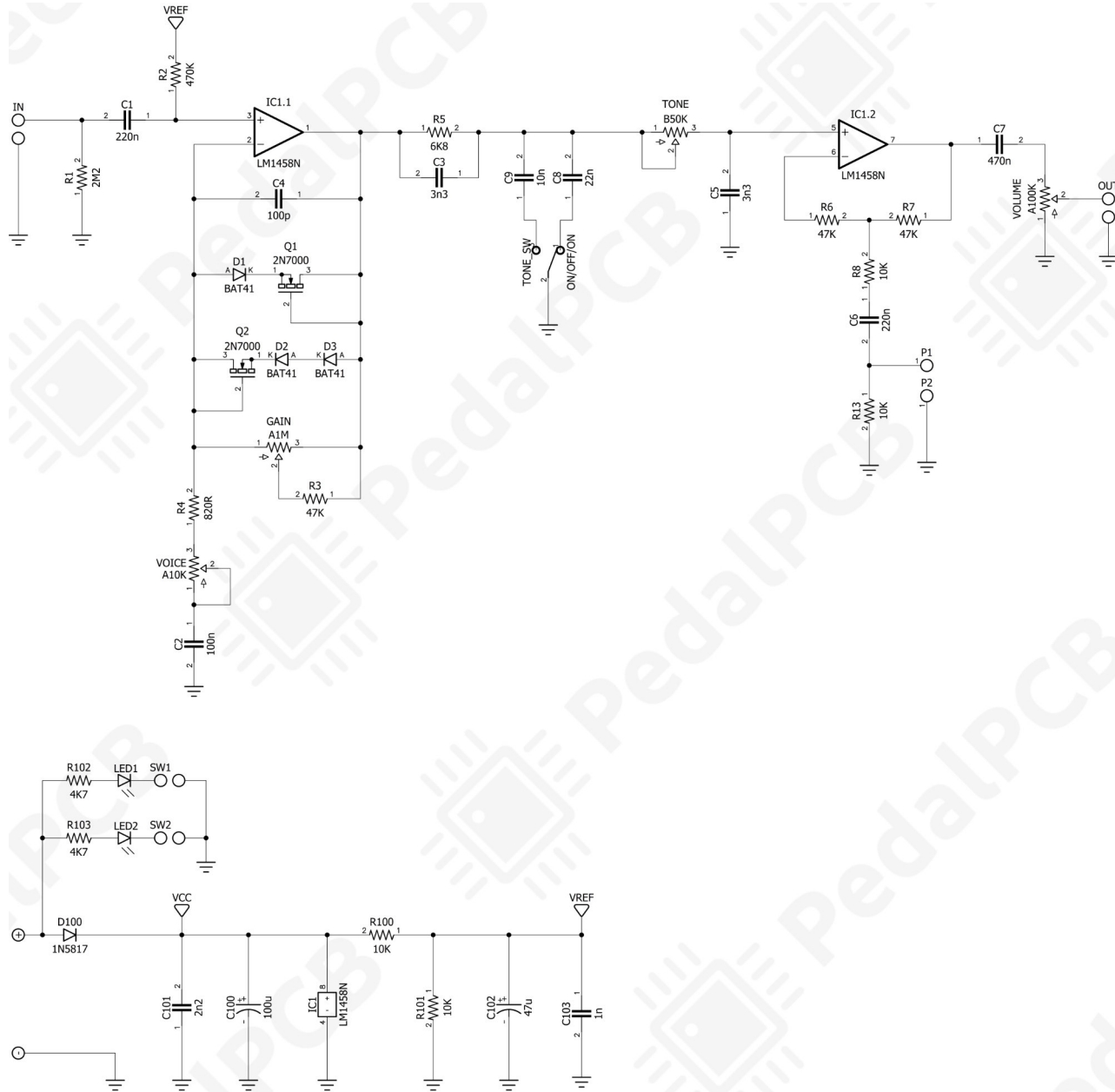
All trademarks and registered trademarks are the property of their respective owners. The company, product, and service names used in this web site are for identification purposes only. Use of these names, logos, and brands does not imply endorsement.



LOCATION	VALUE	TYPE	NOTES
R1	2M2	Resistor, 1/4W	
R2	470K	Resistor, 1/4W	
R3	47K	Resistor, 1/4W	
R4	820R	Resistor, 1/4W	
R5	6K8	Resistor, 1/4W	
R6	47K	Resistor, 1/4W	
R7	47K	Resistor, 1/4W	
R8	10K	Resistor, 1/4W	
R13	10K	Resistor, 1/4W	
R100	10K	Resistor, 1/4W	
R101	10K	Resistor, 1/4W	
R102	4K7	Resistor, 1/4W	
R103	4K7	Resistor, 1/4W	
C1	220n	Film capacitor, 7.2 x 5.0mm	
C2	100n	Film capacitor, 7.2 x 2.5mm	
C3	3n3	Film capacitor, 7.2 x 2.5mm	
C4	100p	Ceramic capacitor	
C5	3n3	Film capacitor, 7.2 x 2.5mm	
C6	220n	Film capacitor, 7.2 x 5.0mm	
C7	470n	Film capacitor, 7.2 x 5.0mm	
C8	22n	Film capacitor, 7.2 x 2.5mm	*Incorrectly marked 2n2 on PCB
C9	10n	Film capacitor, 7.2 x 2.5mm	
C100	100u	Electrolytic capacitor, 6.35mm	
C101	2n2	Film capacitor, 7.2 x 2.5mm	
C102	47u	Electrolytic capacitor, 6.35mm	
C103	1n	Film capacitor, 7.2 x 2.5mm	
D1	BAT41	Signal diode, DO-35	
D2	BAT41	Signal diode, DO-35	
D3	BAT41	Signal diode, DO-35	
D100	1N5817	Schottky diode, DO-41	
Q1	2N7000	N-Channel MOSFET	
Q2	2N7000	N-Channel MOSFET	
IC1	LM1458N	Dual op-amp, DIP8	
VOLUME	A100K	16mm right-angle PCB mount pot	
GAIN	A1M	16mm right-angle PCB mount pot	
TONE	B50K	16mm right-angle PCB mount pot	
VOICE	A10K	16mm right-angle PCB mount pot	
TREBLE CUT	ON/OFF/ON	Toggle switch, SPDT	3-position (ON/OFF/ON)

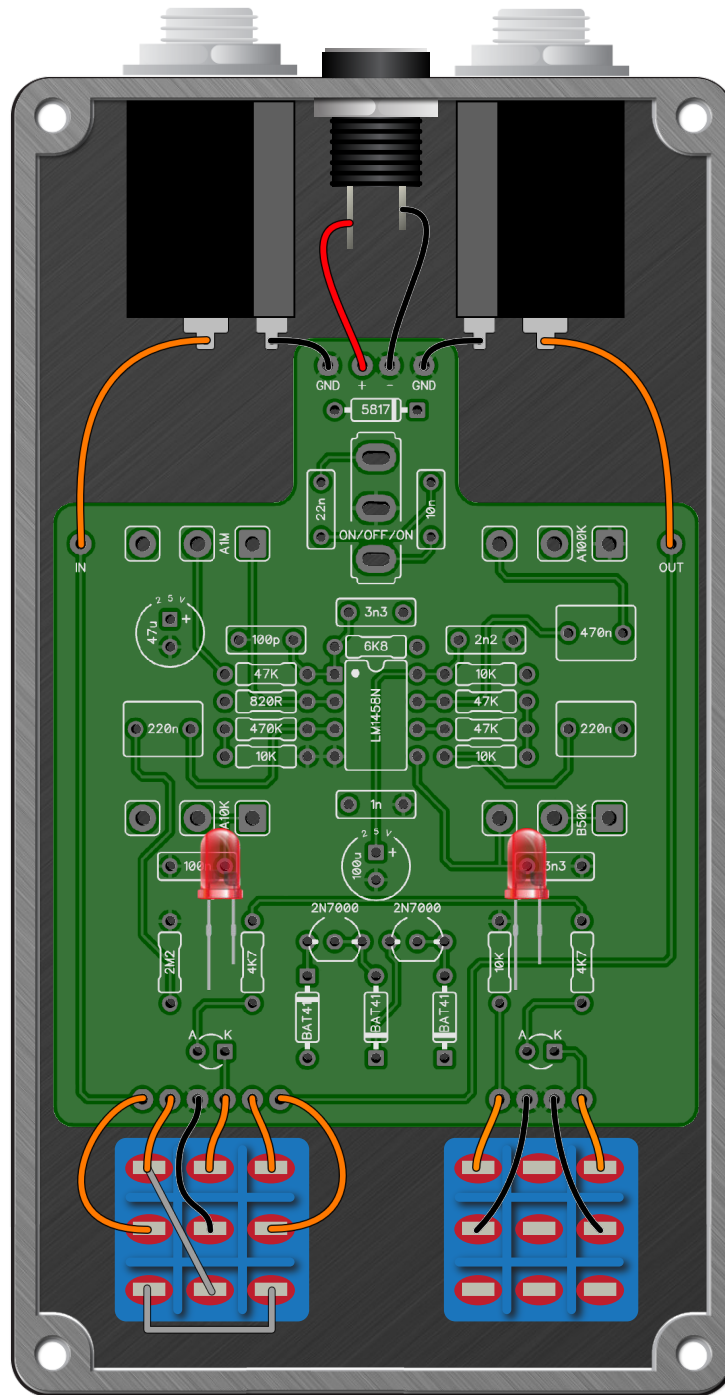
Peachtree Overdrive

Schematic Diagram



Peachtree Overdrive

Wiring Diagram



Peachtree Overdrive

Drill Template
125B Enclosure

