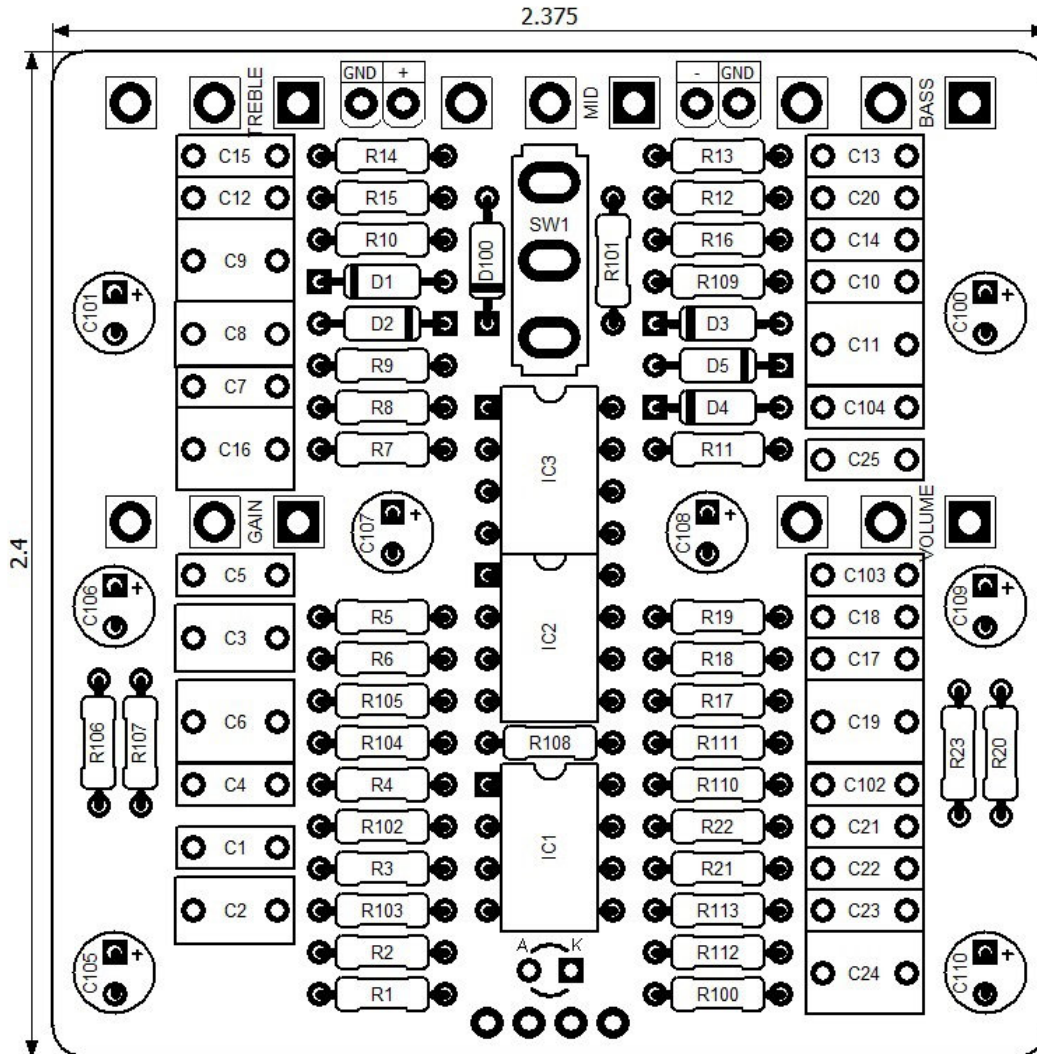


PedalPCB

Pathogen Distortion

Revised 8/17/21

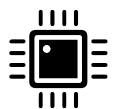


CONTROLS AND FEATURES

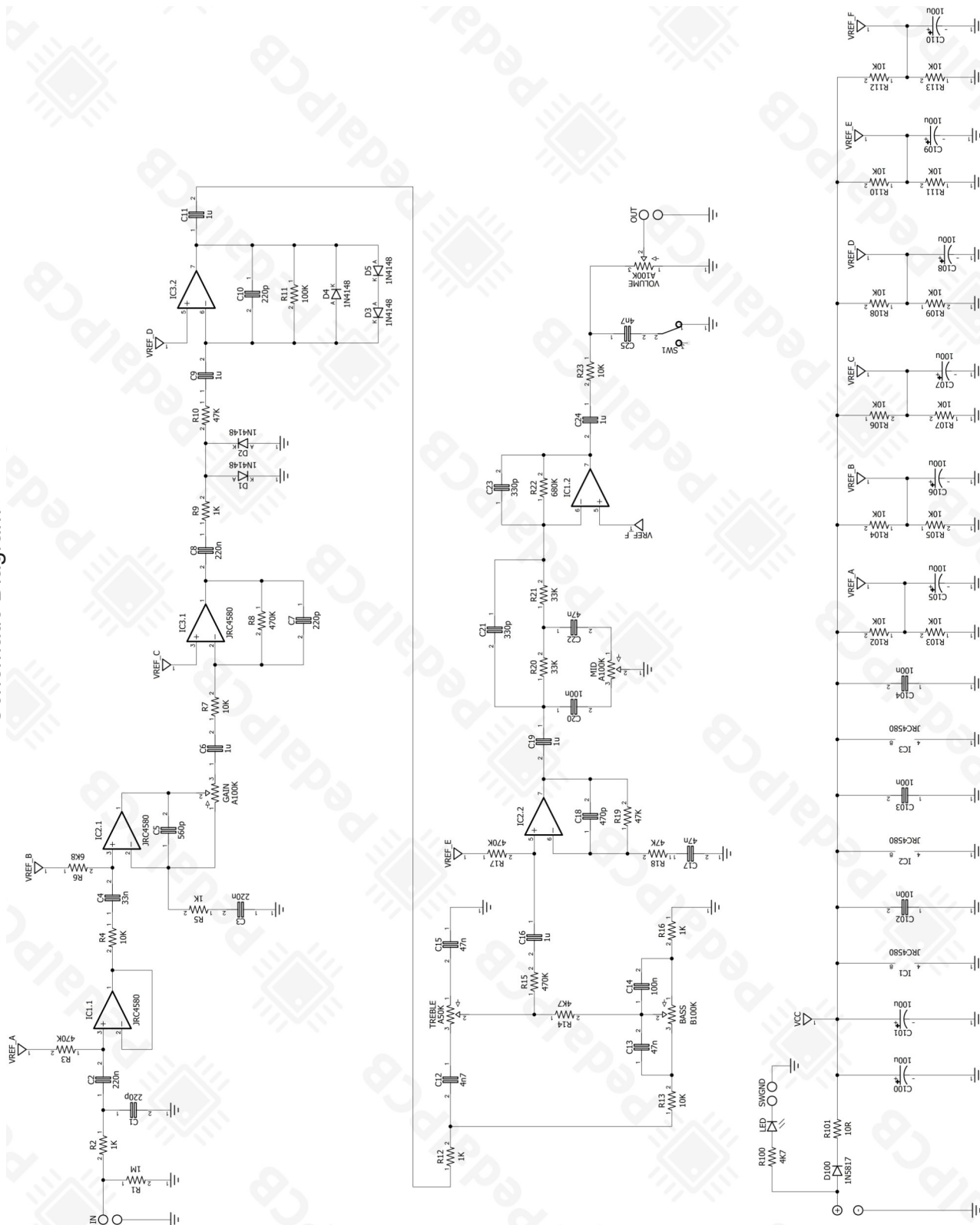
- Bass
- Mid
- Treble
- Volume
- Gain
- Voice (Toggle Switch)

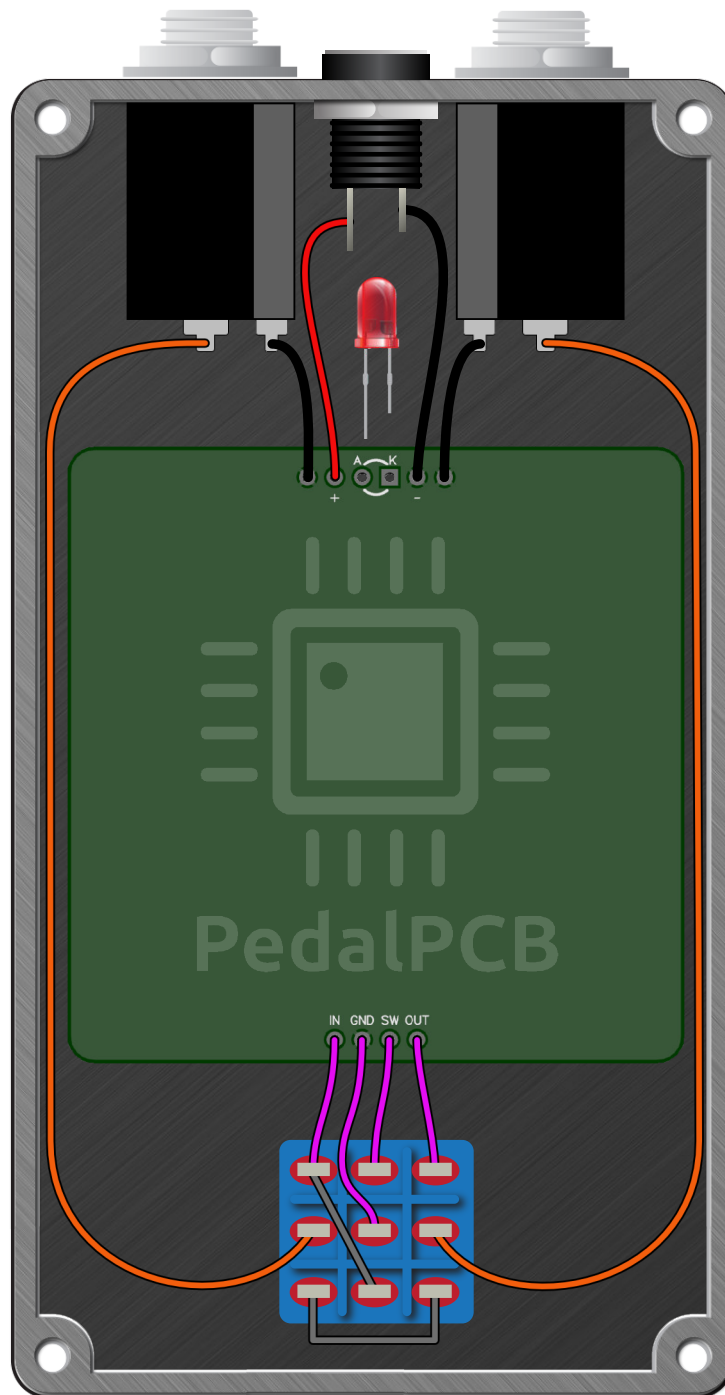
All trademarks and registered trademarks are the property of their respective owners. The company, product, and service names used in this web site are for identification purposes only. Use of these names, logos, and brands does not imply endorsement.

LOCATION	VALUE	TYPE	NOTES
R1	1M	Resistor, 1/4W	
R2	1K	Resistor, 1/4W	
R3	470K	Resistor, 1/4W	
R4	10K	Resistor, 1/4W	
R5	1K	Resistor, 1/4W	
R6	6K8	Resistor, 1/4W	
R7	10K	Resistor, 1/4W	
R8	470K	Resistor, 1/4W	
R9	1K	Resistor, 1/4W	
R10	47K	Resistor, 1/4W	
R11	100K	Resistor, 1/4W	
R12	1K	Resistor, 1/4W	
R13	10K	Resistor, 1/4W	
R14	4K7	Resistor, 1/4W	
R15	470K	Resistor, 1/4W	
R16	1K	Resistor, 1/4W	
R17	470K	Resistor, 1/4W	
R18	47K	Resistor, 1/4W	
R19	47K	Resistor, 1/4W	
R20	33K	Resistor, 1/4W	
R21	33K	Resistor, 1/4W	
R22	680K	Resistor, 1/4W	
R23	10K	Resistor, 1/4W	
R100	4K7	Resistor, 1/4W	
R101	10R	Resistor, 1/4W	
R102	10K	Resistor, 1/4W	
R103	10K	Resistor, 1/4W	
R104	10K	Resistor, 1/4W	
R105	10K	Resistor, 1/4W	
R106	10K	Resistor, 1/4W	
R107	10K	Resistor, 1/4W	
R108	10K	Resistor, 1/4W	
R109	10K	Resistor, 1/4W	
R110	10K	Resistor, 1/4W	
R111	10K	Resistor, 1/4W	
R112	10K	Resistor, 1/4W	
R113	10K	Resistor, 1/4W	
D1	1N4148	Signal diode, DO-35	
D2	1N4148	Signal diode, DO-35	
D3	1N4148	Signal diode, DO-35	
D4	1N4148	Signal diode, DO-35	
D5	1N4148	Signal diode, DO-35	
D100	1N5817	Schottky diode, DO-41	
IC1	JRC4580	Dual op-amp, DIP8	
IC2	JRC4580	Dual op-amp, DIP8	
IC3	JRC4580	Dual op-amp, DIP8	



LOCATION	VALUE	TYPE	NOTES
C1	220p	Ceramic capacitor	
C2	220n	Film capacitor, 7.2 x 5.0mm	
C3	220n	Film capacitor, 7.2 x 5.0mm	
C4	33n	Film capacitor, 7.2 x 2.5mm	
C5	560p	Ceramic capacitor	
C6	1u	Film capacitor, 7.2 x 5.0mm	
C7	220p	Ceramic capacitor	
C8	220n	Film capacitor, 7.2 x 5.0mm	
C9	1u	Film capacitor, 7.2 x 5.0mm	
C10	220p	Ceramic capacitor	
C11	1u	Film capacitor, 7.2 x 2.5mm	
C12	4n7	Film capacitor, 7.2 x 2.5mm	
C13	47n	Film capacitor, 7.2 x 2.5mm	
C14	100n	Film capacitor, 7.2 x 2.5mm	
C15	47n	Film capacitor, 7.2 x 2.5mm	
C16	1u	Film capacitor, 7.2 x 5.0mm	
C17	47n	Film capacitor, 7.2 x 2.5mm	
C18	470p	Ceramic capacitor	
C19	1u	Film capacitor, 7.2 x 5.0mm	
C20	100n	Film capacitor, 7.2 x 2.5mm	
C21	330p	Ceramic capacitor	
C22	47n	Film capacitor, 7.2 x 2.5mm	
C23	330p	Ceramic capacitor	
C24	1u	Film capacitor, 7.2 x 5.0mm	
C25	4n7	Film capacitor, 7.2 x 2.5mm	
C100	100u	Electrolytic capacitor, 5mm	
C101	100u	Electrolytic capacitor, 5mm	
C102	100n	Film capacitor, 7.2 x 2.5mm	
C103	100n	Film capacitor, 7.2 x 2.5mm	
C104	100n	Film capacitor, 7.2 x 2.5mm	
C105	100u	Electrolytic capacitor, 5mm	
C106	100u	Electrolytic capacitor, 5mm	
C107	100u	Electrolytic capacitor, 5mm	
C108	100u	Electrolytic capacitor, 5mm	
C109	100u	Electrolytic capacitor, 5mm	
C110	100u	Electrolytic capacitor, 5mm	
BASS	B100K	16mm right-angle PCB mount pot	
MID	A100K	16mm right-angle PCB mount pot	
TREBLE	A50K	16mm right-angle PCB mount pot	
VOLUME	A100K	16mm right-angle PCB mount pot	
GAIN	A100K	16mm right-angle PCB mount pot	
SW1	SPDT	Toggle switch, SPDT	2-position (ON/ON)





Pathogen Distortion

Drill Template
125B Enclosure

