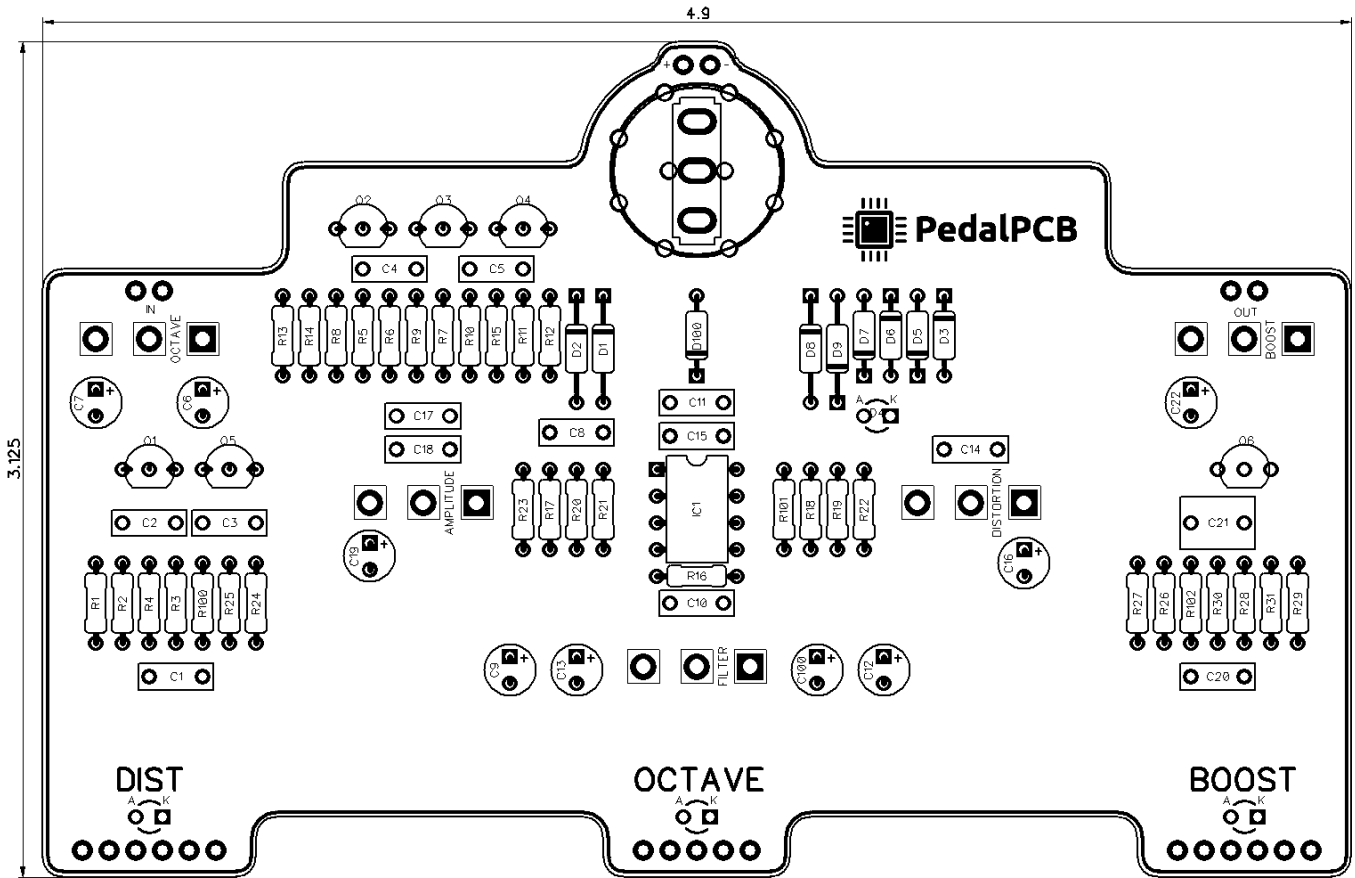


# PedalPCB

## Parentheses Fuzz

(2020 Edition)

Revision 09.22.20



### Controls

- Distortion
- Filter
- Amplitude
- Clipping (Rotary or Toggle Switch)
- Octave Blend
- Boost

### Footswitches

- Active/Bypass (Footswitch)
- Octave (Footswitch)
- Boost (Footswitch)

All trademarks and registered trademarks are the property of their respective owners. The company, product, and service names used in this web site are for identification purposes only. Use of these names, logos, and brands does not imply endorsement.

**RESISTORS (1/4W)**

R1	1M
R2	1K
R3	1M
R4	10K
R5	470K
R6	47K
R7	22K
R8	2K2
R9	10K
R10	10K
R11	100K
R12	100K
R13	47K
R14	47K
R15	10K
R16	1M
R17	1K
R18	10K
R19	10K
R20	560R
R21	47R
R22	1K
R23	1K5
R24	1M
R25	10K
R26	1M
R27	1K
R28	470K
R29	470K
R30	10K
R31	470R
R100	4K7
R101	4K7
R102	4K7

**CAPACITORS**

C1	100p
C2	100n
C3	100n
C4	100n
C5	100n
C6	1u
C7	1u
C8	22n
C9	4u7
C10	1n
C11	100n
C12	10u
C13	2u2
C14	100p
C15	30p
C16	4u7
C17	3n3
C18	22n
C19	1u
C20	100p
C21	1u
C22	10u
C100	100u

**SWITCHES**

SW1	2P4T Mini Rotary Switch
<b>OR</b>	
SW1	SPDT ON/OFF/ON

**INTEGRATED CIRCUITS**

IC1	LM308
-----	-------

**TRANSISTORS**

Q1	PF5102
Q2	2N5089
Q3	2N5087
Q4	2N5089
Q5	PF5102
Q6	BS170

**DIODES**

D1	GE
D2	GE
D3	1N4148
D4	3mm Red LED
D5	1N4148
D6	1N4148
D7	1N4148
D8	GE (see notes)
D9	GE (see notes)
D100	1N5817

**POTENTIOMETERS**

DISTORTION	A100K
FILTER	A100K
AMPLITUDE	A100K
OCTAVE	B50K
BOOST	A100K

---

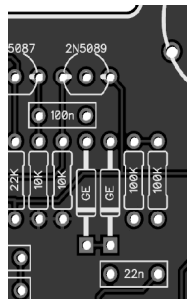
**Build Notes**
**D1 and D2 orientation**

In Version 1 of the original pedal D1 and D2 were installed backwards, this was corrected in Version 2.

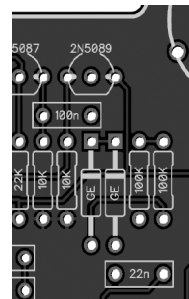
**NOTE: On some germanium diodes the stripe is on the Anode end of the diode instead of the Cathode. This should be verified with a DMM before installing.**

**To build Version 1**

Install D1 and D2 with **cathodes** pointing **down**.


**To build Version 2**

Install D1 and D2 with **cathodes** pointing **up**.

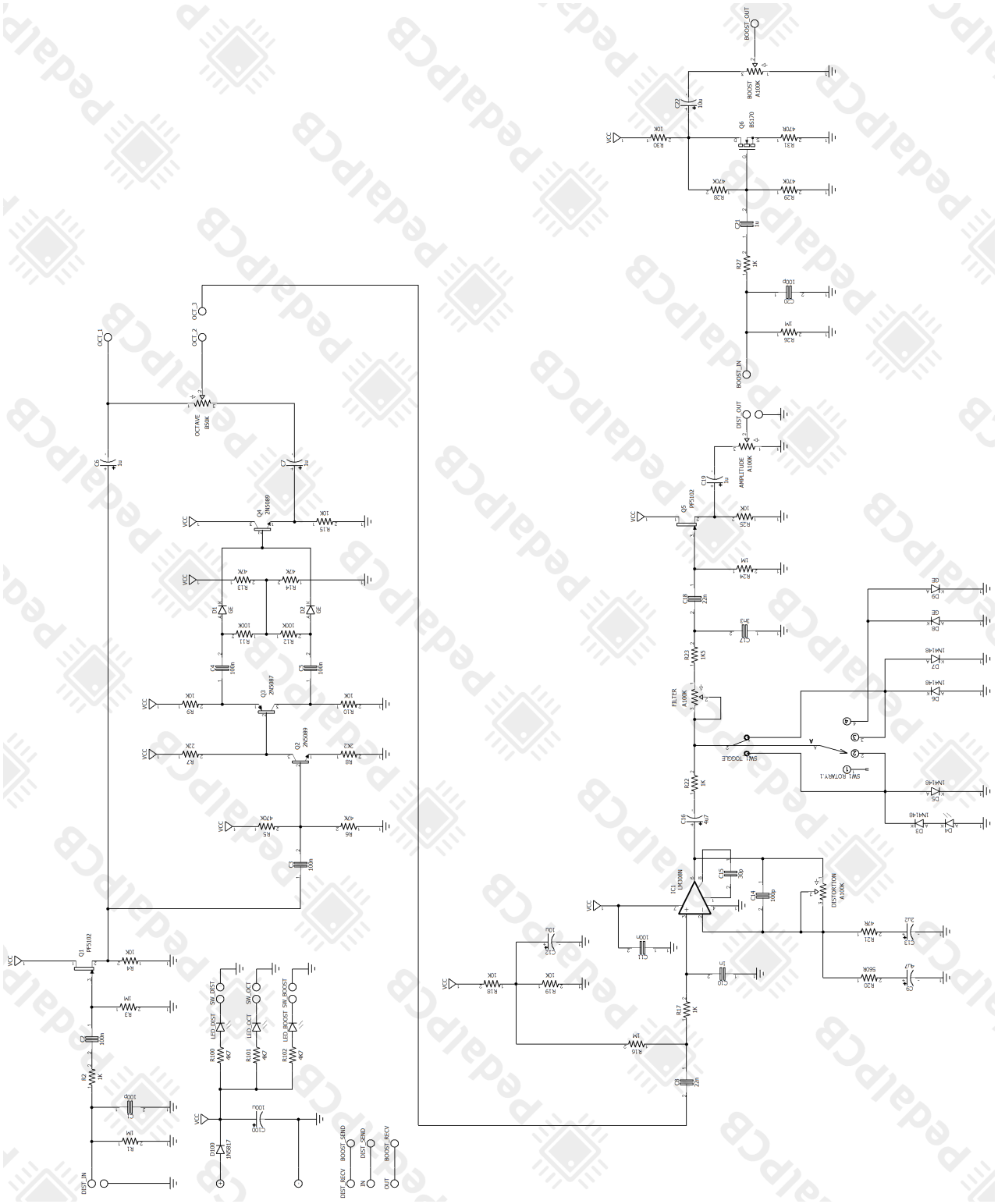

**2P4T Mini Rotary Clipping Switch**

<https://www.pedalpcb.com/product/mini-rotary-switch-2p4t/>

**D8 and D9 are only needed when using Rotary clipping switch. These can be omitted if using Toggle switch.**

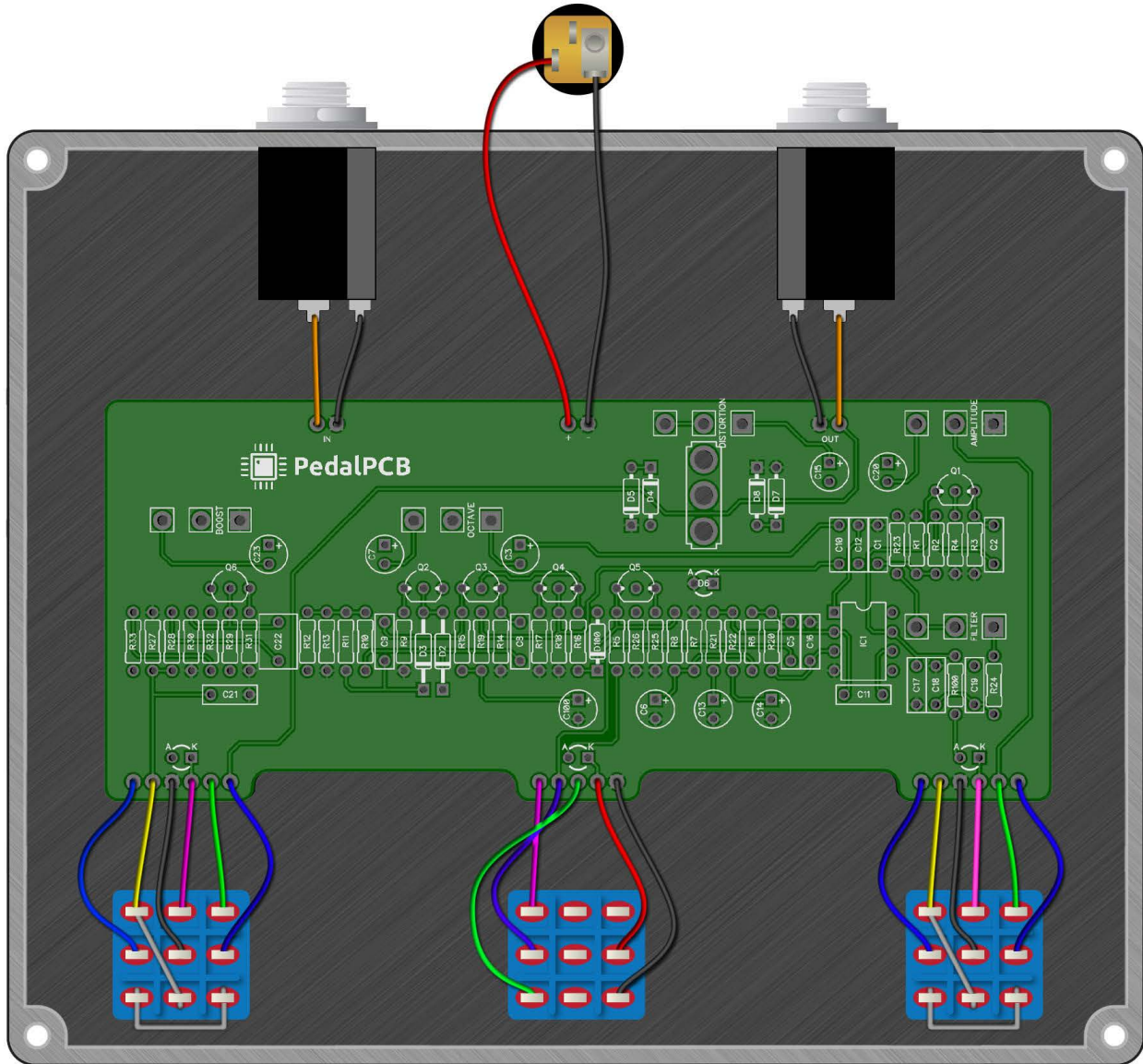
*Common offboard components (enclosure, footswitch, jacks, etc) are not listed*

# Parentheses Fuzz



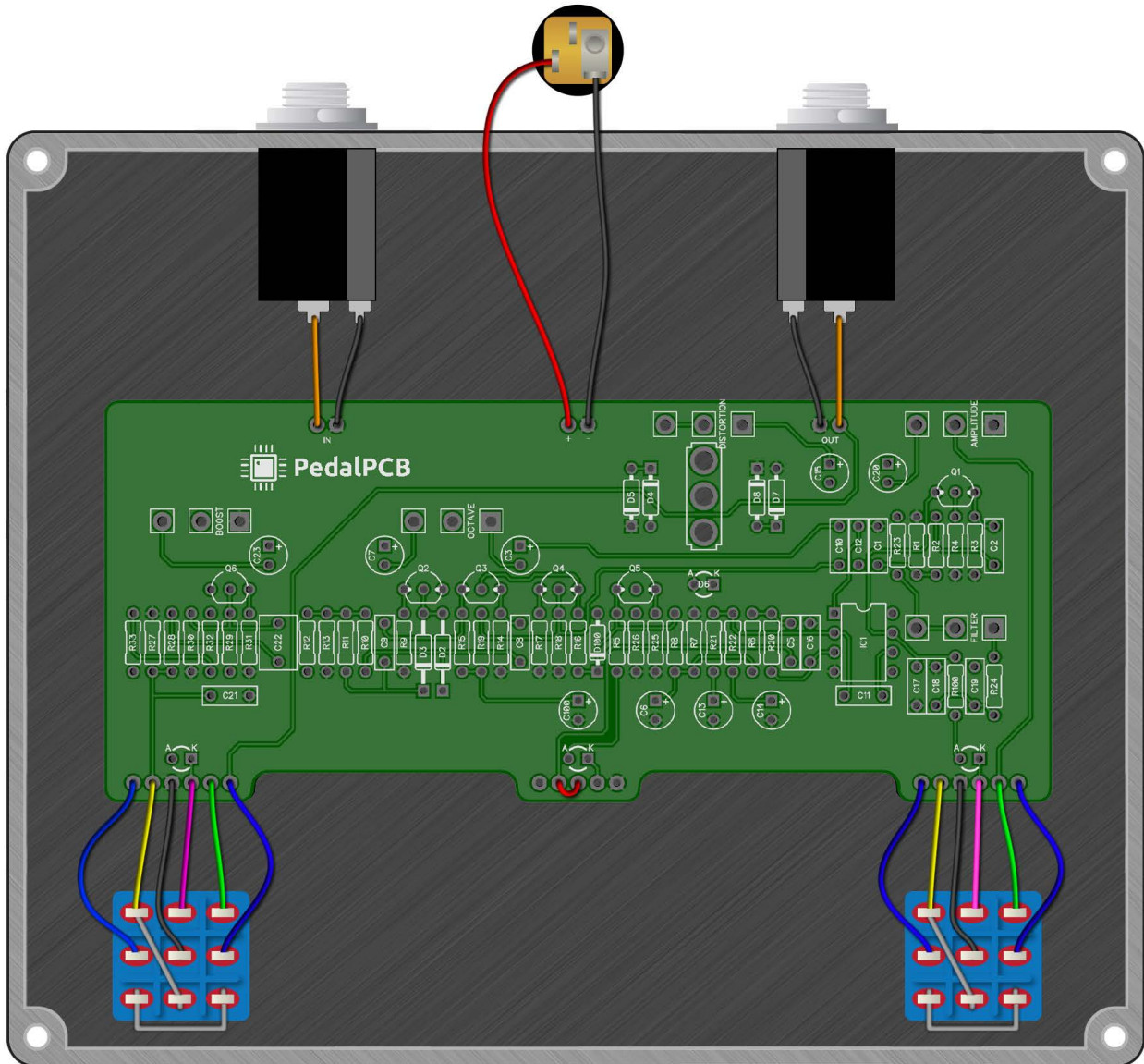
# Parenteses Fuzz

Wiring Diagram  
(With Octave Footswitch)



# Parentheses Fuzz

Alternate Wiring Diagram  
(No Octave Footswitch)



# Parentheses Fuzz

Drill Template  
4S6500 / 1590XX Enclosure

