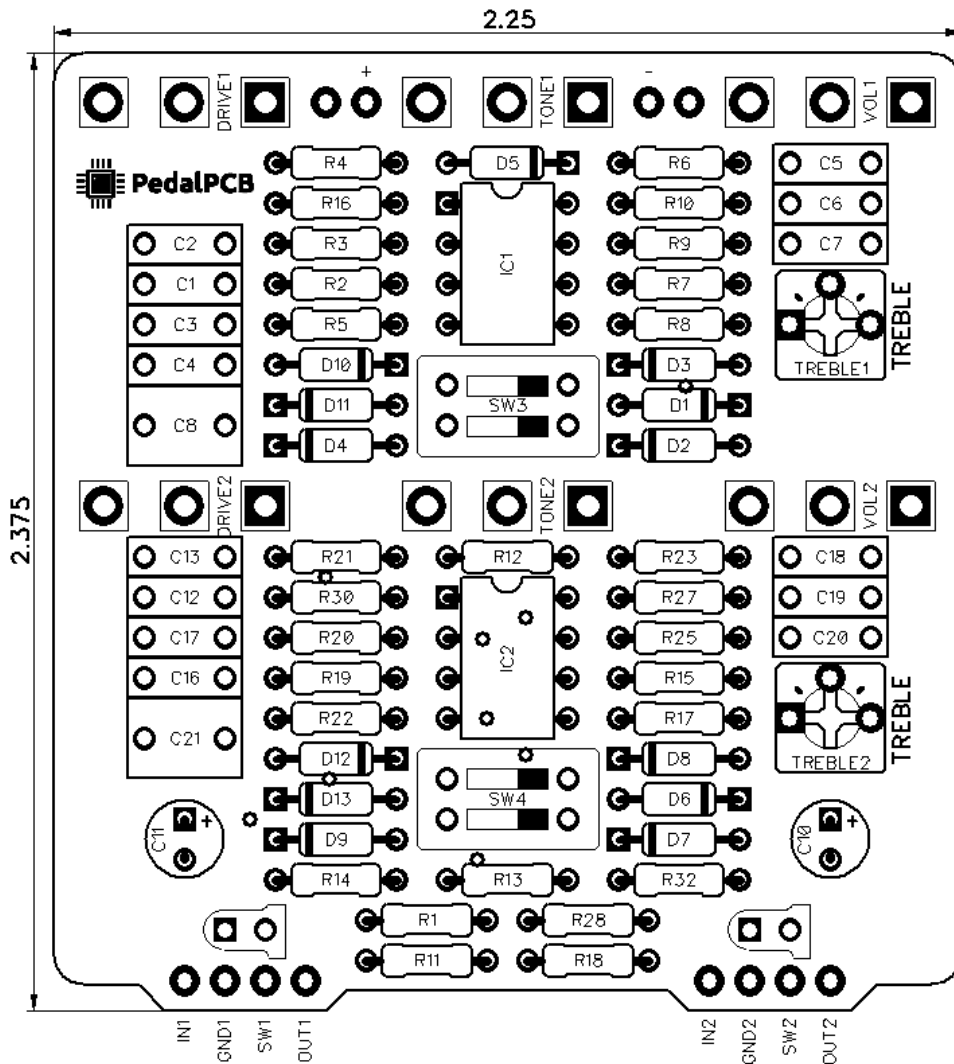




PedalPCB

Paragon Mini

Revision 06.10.20



Controls (each side)

- **Volume** – Controls the output volume
- **Tone** – Controls the tone
- **Drive** – Controls the amount of drive
- **Treble (Internal trimpot)** – Adjusts the amount of treble content
- **DIP1 (Internal dipswitch)** – **Enable/disable soft clipping (overdrive)**
- **DIP2 (Internal dipswitch)** – **Enable/disable hard clipping (distortion)**

All trademarks and registered trademarks are the property of their respective owners. The company, product, and service names used in this web site are for identification purposes only. Use of these names, logos, and brands does not imply endorsement.

RESISTORS

R1 1M
R2 1M
R3 1K*
R4 33K
R5 27K
R6 10K
R7 220K
R8 6K8
R9 1K
R10 6K8
R11 1M
R12 47K
R13 47K
R14 4K7
R15 220K
R16 100K
R17 6K8
R18 1M
R19 1M
R20 1K*
R21 33K
R22 27K
R23 10K
R25 1K
R27 6K8
R28 1M
R30 100K
R32 4K7

Channel 1 High Gain

R3 - 100K

Channel 2 High Gain

R20 - 100K

CAPACITORS

C1 22n
C2 100p
C3 10n
C4 10n
C5 100n
C6 10n
C7 10n
C8 1u
C10 100u
C11 100u
C12 22n
C13 100p
C16 10n
C17 10n
C18 100n
C19 10n
C20 10n
C21 1u

SWITCHES

SW3 DIP2 SPST
SW4 DIP2 SPST

INTEGRATED CIRCUITS

IC1 JRC4580D
IC2 JRC4580D

DIODES

D1 MA856
D2 MA856
D3 MA856
D4 MA856
D5 5817
D6 MA856
D7 MA856
D8 MA856
D9 MA856
D10 1S1588
D11 1S1588
D12 1S1588
D13 1S1588

POTENTIOMETERS

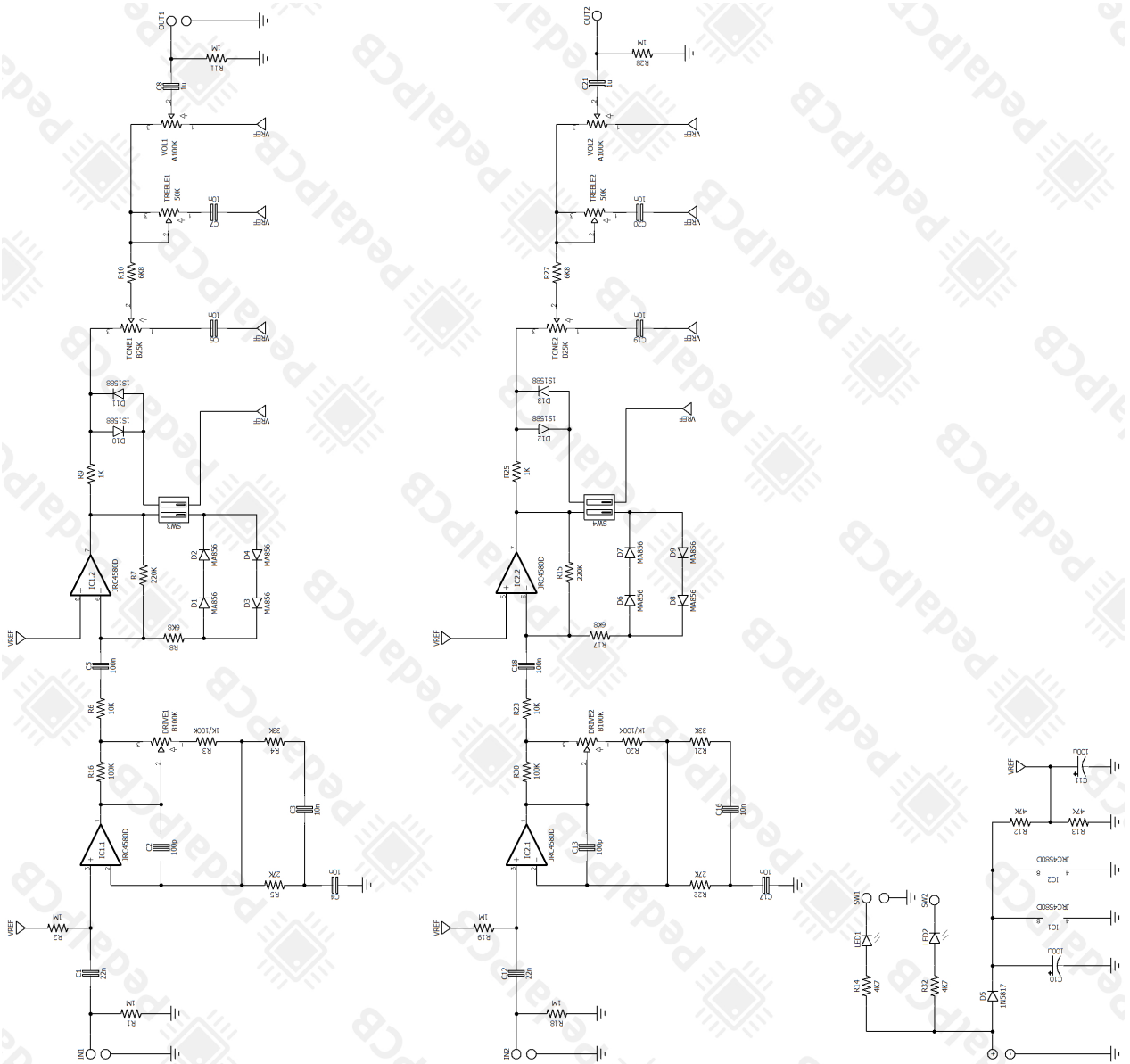
VOL1 100KA
TONE1 25KB
DRIVE1 100KB

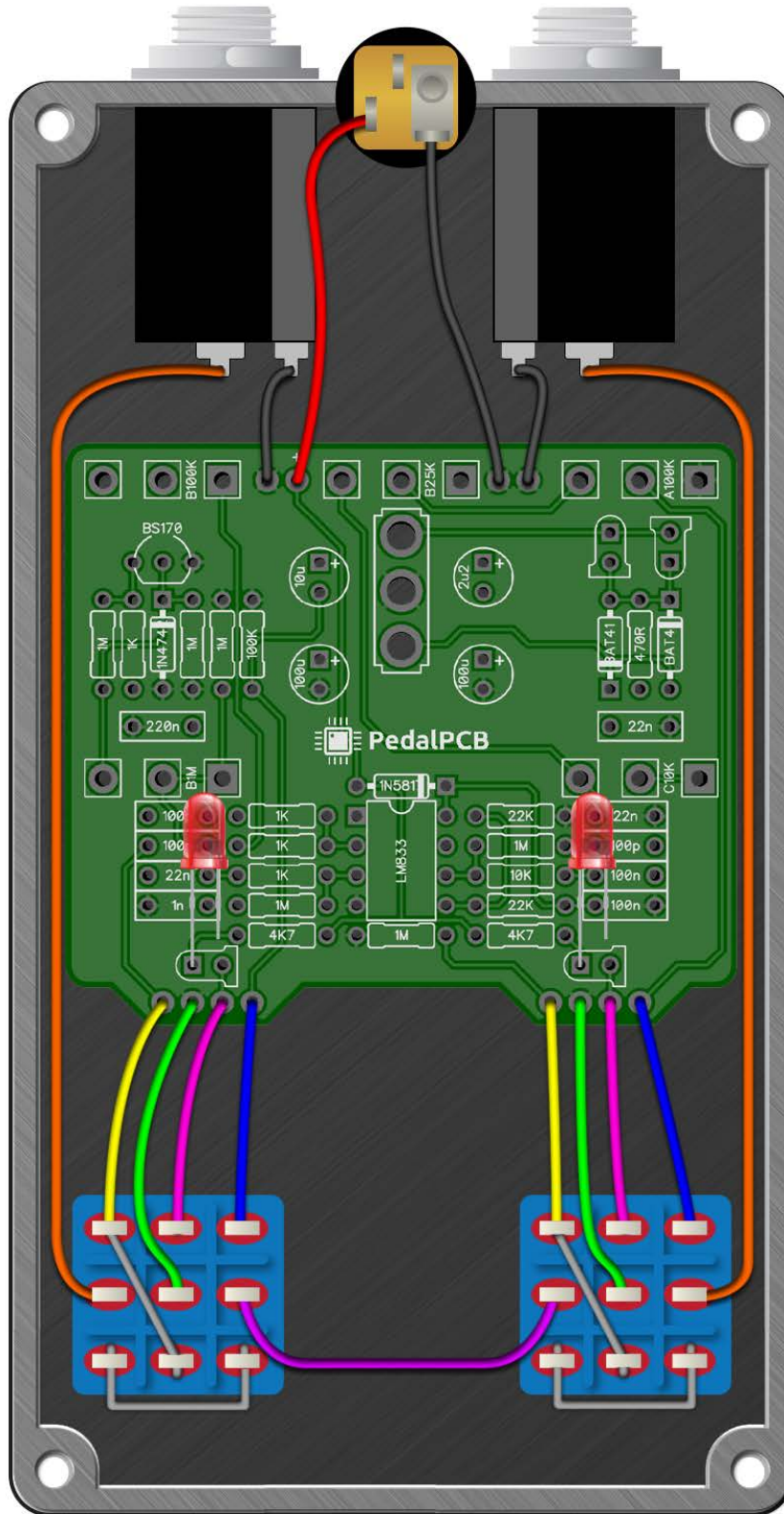
VOL2 100KA
TONE2 25KB
DRIVE2 100KB

TRIM POTS (3362P)

TREBLE1 50K TRIM
TREBLE2 50K TRIM

Paragon Mini





Paragon Mini

Drill Template
125B enclosure with top mounted jacks

