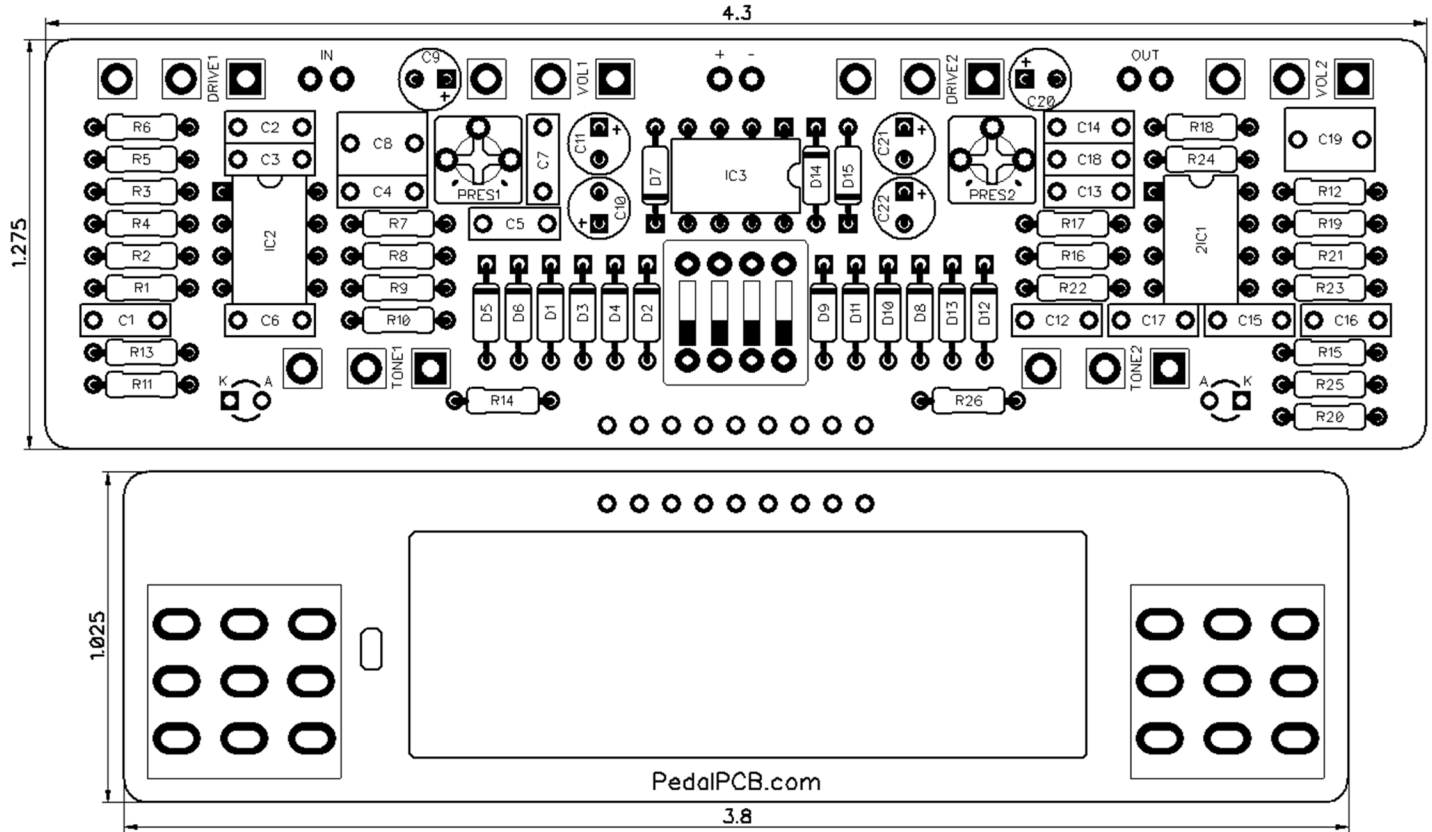




# PedalPCB

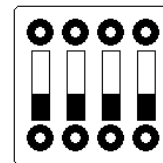
## Paragon Overdrive

Revised 11/9/21



## CONTROLS AND FEATURES

- **Volume 1** controls channel 1 Volume
- **Tone 1** controls channel 1 Tone
- **Drive 1** controls channel 1 Drive
- **Presence 1** (Trim Pot) controls channel 1 Presence
- **Volume 2** controls channel 2 Volume
- **Tone 2** controls channel 2 Tone
- **Drive 2** controls channel 2 Drive
- **Presence 2** (Trim Pot) controls channel 1 Presence



CH2 HARD CLIPPING  
 CH2 SOFT CLIPPING  
 CH1 HARD CLIPPING  
 CH1 SOFT CLIPPING

All trademarks and registered trademarks are the property of their respective owners. The company, product, and service names used in this web site are for identification purposes only. Use of these names, logos, and brands does not imply endorsement.

LOCATION	VALUE	TYPE	NOTES
R1	1M	Resistor, 1/4W	
R2	1M	Resistor, 1/4W	
R3	1K	Resistor, 1/4W	100K for <i>High Gain Channel 1</i>
R4	33K	Resistor, 1/4W	
R5	27K	Resistor, 1/4W	
R6	10K	Resistor, 1/4W	
R7	220K	Resistor, 1/4W	
R8	6K8	Resistor, 1/4W	
R9	1K	Resistor, 1/4W	
R10	6K8	Resistor, 1/4W	
R11	1M	Resistor, 1/4W	
R12	47K	Resistor, 1/4W	
R13	47K	Resistor, 1/4W	
R14	4K7	Resistor, 1/4W	
R15	1M	Resistor, 1/4W	
R16	1M	Resistor, 1/4W	
R17	1K	Resistor, 1/4W	100K for <i>High Gain Channel 2</i>
R18	33K	Resistor, 1/4W	
R19	27K	Resistor, 1/4W	
R20	10K	Resistor, 1/4W	
R21	220K	Resistor, 1/4W	
R22	6K8	Resistor, 1/4W	
R23	1K	Resistor, 1/4W	
R24	6K8	Resistor, 1/4W	
R25	1M	Resistor, 1/4W	
R26	4K7	Resistor, 1/4W	
C1	22n	Film capacitor, 7.2 x 2.5mm	
C2	100p	Ceramic capacitor	
C3	10n	Film capacitor, 7.2 x 2.5mm	
C4	10n	Film capacitor, 7.2 x 2.5mm	
C5	100n	Film capacitor, 7.2 x 2.5mm	
C6	10n	Film capacitor, 7.2 x 2.5mm	
C7	10n	Film capacitor, 7.2 x 2.5mm	
C8	1u	Film capacitor, 7.2 x 5mm	
C9	1u	Electrolytic capacitor, 5mm	⚡ 25V Minimum
C10	10uF	Electrolytic capacitor, 5mm	⚡ 25V Minimum
C11	100uF	Electrolytic capacitor, 5mm	⚡ 25V Minimum
C12	22n	Film capacitor, 7.2 x 2.5mm	
C13	100p	Ceramic capacitor	
C14	10n	Film capacitor, 7.2 x 2.5mm	
C15	10n	Film capacitor, 7.2 x 2.5mm	
C16	100n	Film capacitor, 7.2 x 2.5mm	
C17	10n	Film capacitor, 7.2 x 2.5mm	
C18	10n	Film capacitor, 7.2 x 2.5mm	
C19	1u	Film capacitor, 7.2 x 5mm	
C20	1u	Electrolytic capacitor, 5mm	⚡ 25V Minimum
C21	10uF	Electrolytic capacitor, 5mm	⚡ 25V Minimum
C22	10uF	Electrolytic capacitor, 5mm	⚡ 25V Minimum

LOCATION	VALUE	TYPE	NOTES
IC1	JRC4580D	Dual op-amp, DIP8	
IC2	JRC4580D	Dual op-amp, DIP8	
IC3	TC1044SCPA	Charge pump, DIP8	
D1	MA856	Signal diode, DO-34	
D2	MA856	Signal diode, DO-34	
D3	MA856	Signal diode, DO-34	
D4	MA856	Signal diode, DO-34	
D5	1S1588	Signal diode, DO-35	
D6	1S1588	Signal diode, DO-35	
D7	1N5817	Schottky diode, DO-41	
D8	MA856	Signal diode, DO-34	
D9	MA856	Signal diode, DO-34	
D10	MA856	Signal diode, DO-34	
D11	MA856	Signal diode, DO-34	
D12	1S1588	Signal diode, DO-35	
D13	1S1588	Signal diode, DO-35	
D14	1N5817	Schottky diode, DO-41	
D15	1N5817	Schottky diode, DO-41	
VOL1	A100K	16mm right-angle PCB mount pot	
VOL2	A100K	16mm right-angle PCB mount pot	
TONE1	B25K	16mm right-angle PCB mount pot	
TONE2	B25K	16mm right-angle PCB mount pot	
DRIVE1	B100K	16mm right-angle PCB mount pot	
DRIVE2	B100K	16mm right-angle PCB mount pot	
PRES1	50K	Trim Potentiometer (3362P type)	
PRES2	50K	Trim Potentiometer (3362P type)	
DIP	DIP switch	4-position DIP switch	
PIN HEADER		9-pin 2.54mm Male Pin Header	

