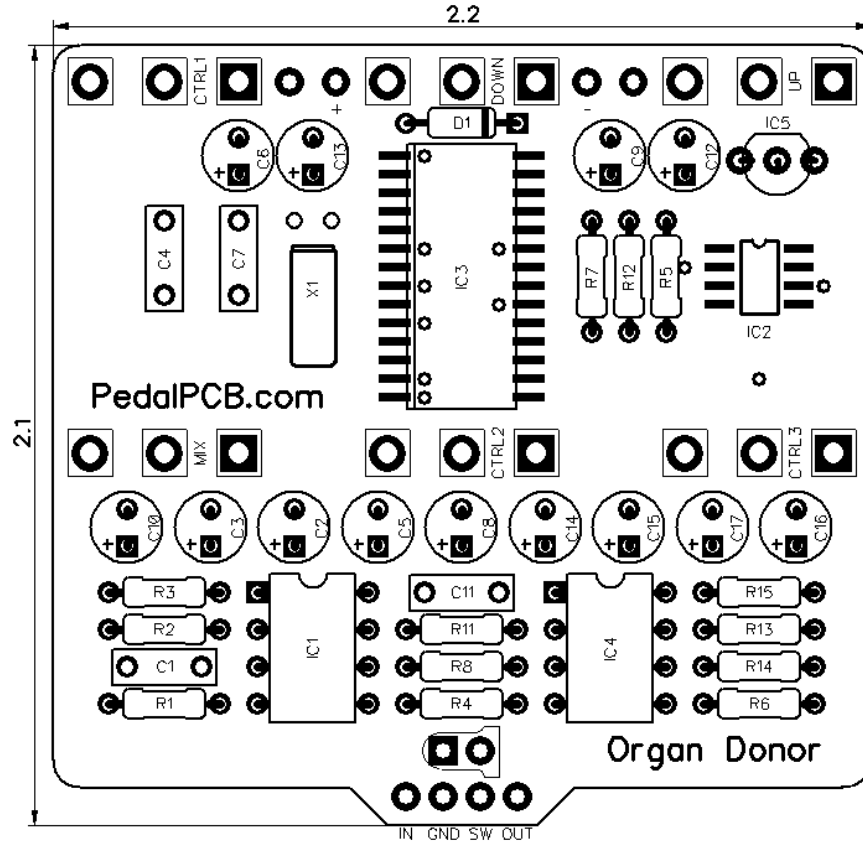


# Organ Donor

Revision 07.06.18



## Resistors

R1	1M
R2	100K
R3	1K
R4	100K
R5	10K
R6	100K
R7	100R
R8	100K
R11	1K
R12	4K7
R13	10K
R14	10K
R15	100K

## Capacitors

C1	100nF
C2	1uF
C3	1uF
C4	1nF
C5	1uF
C6	10uF
C7	15pF
C8	1uF
C9	1uF
C10	1uF
C11	2.2nF
C12	1uF
C13	1uF
C14	1uF
C15	100uF
C16	47uF
C17	47uF

## Semiconductors

IC1	TL072
IC2	24LC32A
IC3	Spin FV1
IC4	TL072
IC5	L78L33
D1	1N5817

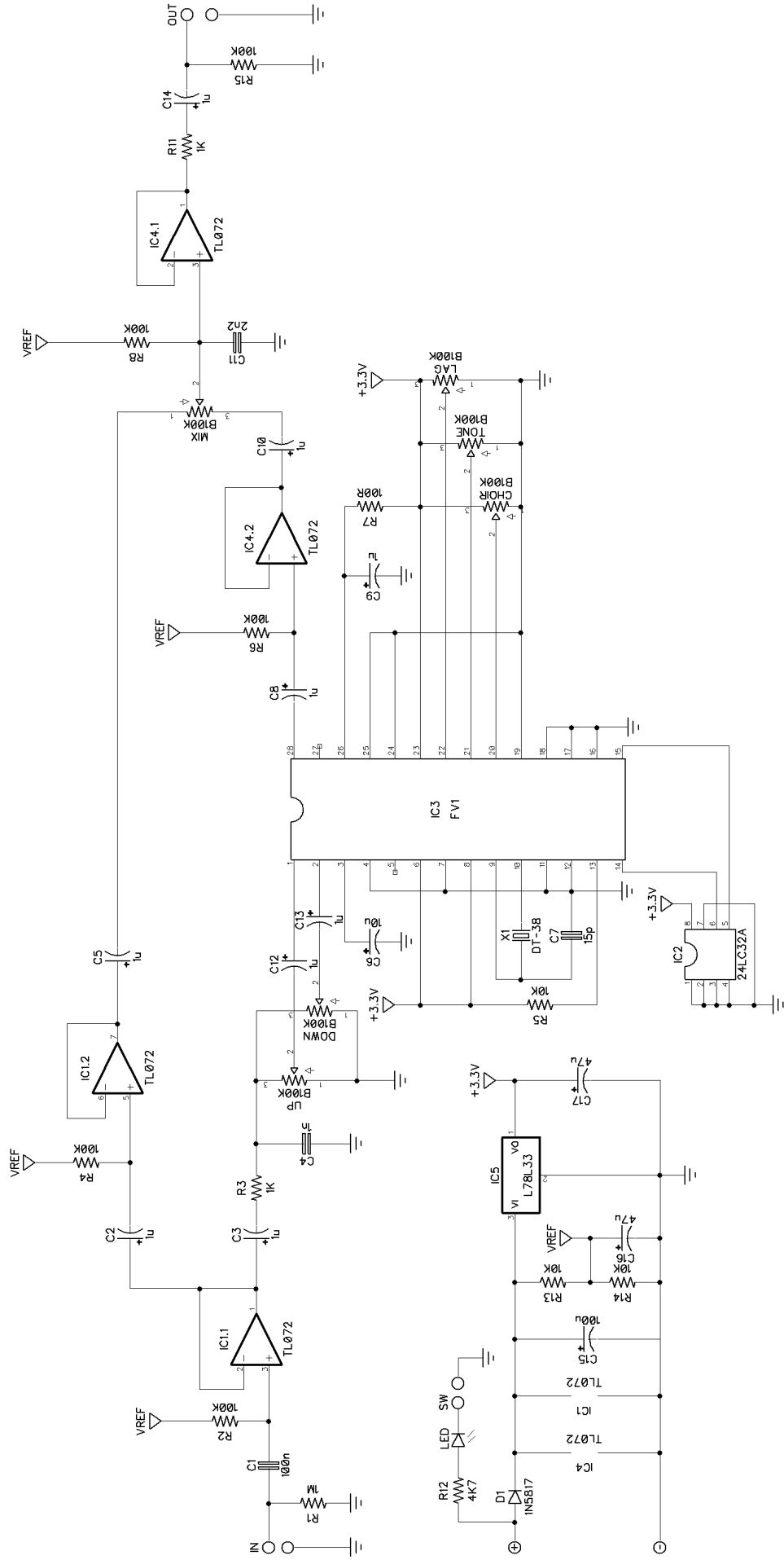
## Potentiometers

UP	B100K
DOWN	B100K
CHOIR	B100K
LAG	B100K
TONE	B100K
MIX	B100K

## Crystals

X1	32.768KHz Crystal (DT-38)
----	---------------------------

# Organ Donor



# Wiring Diagram

