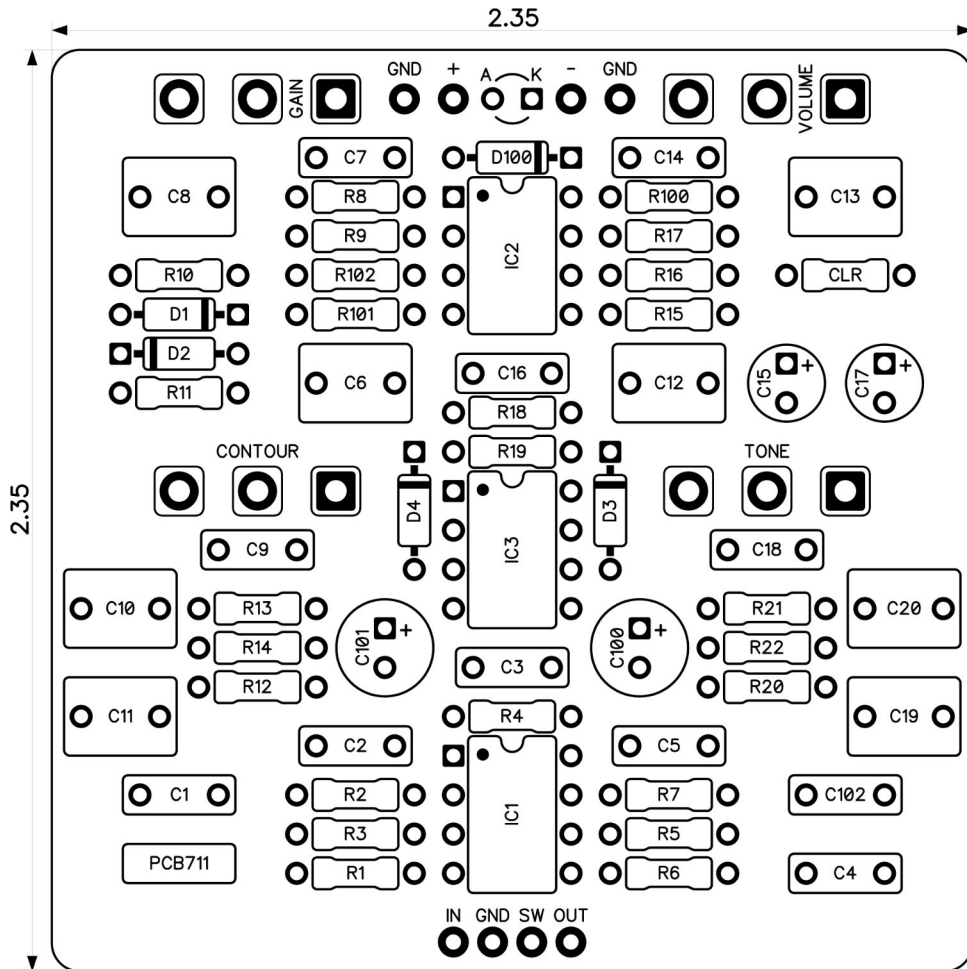


PedalPCB

Nine Ball Overdrive

Revised 9/9/25



CONTROLS AND FEATURES

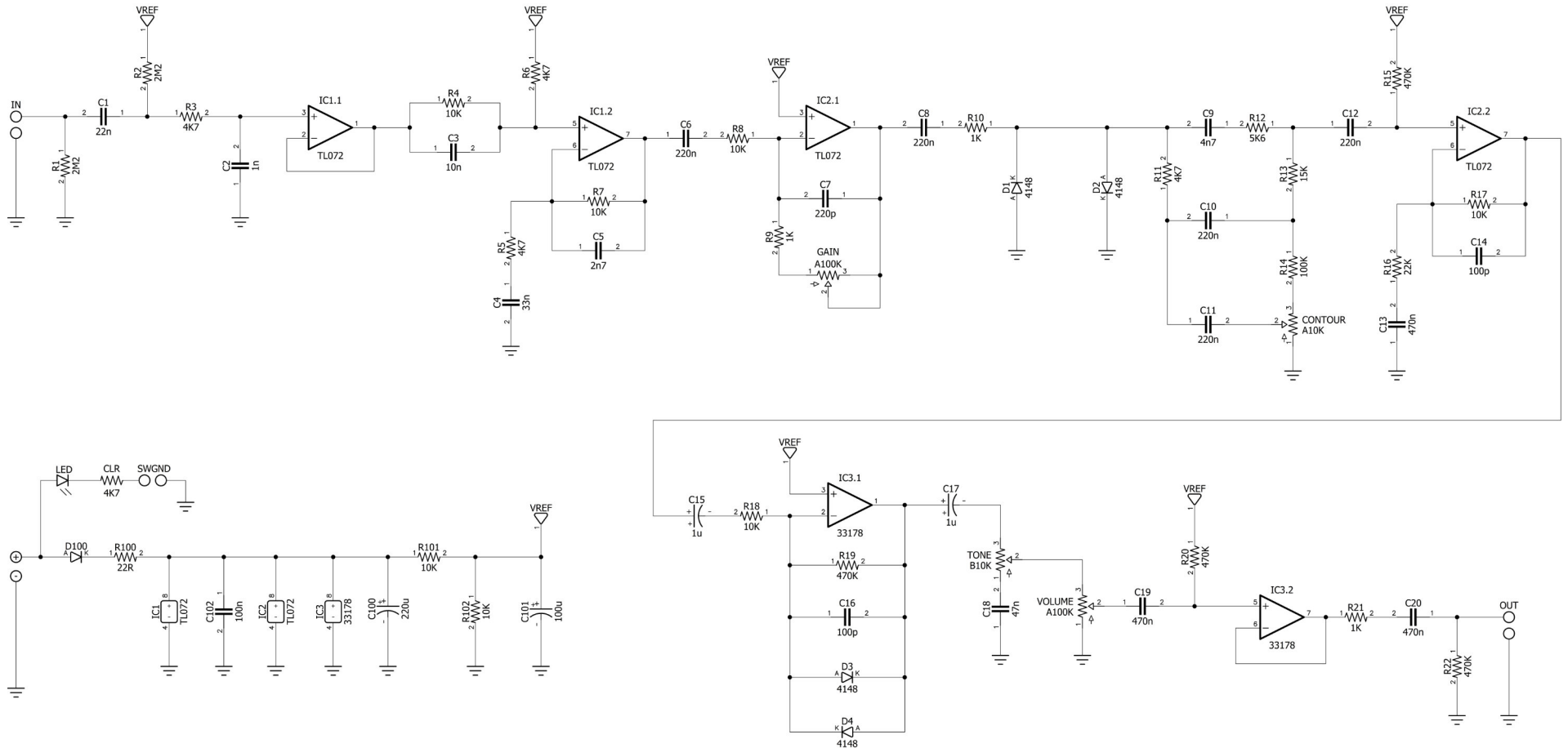
- Volume
- Gain
- Tone
- Contour

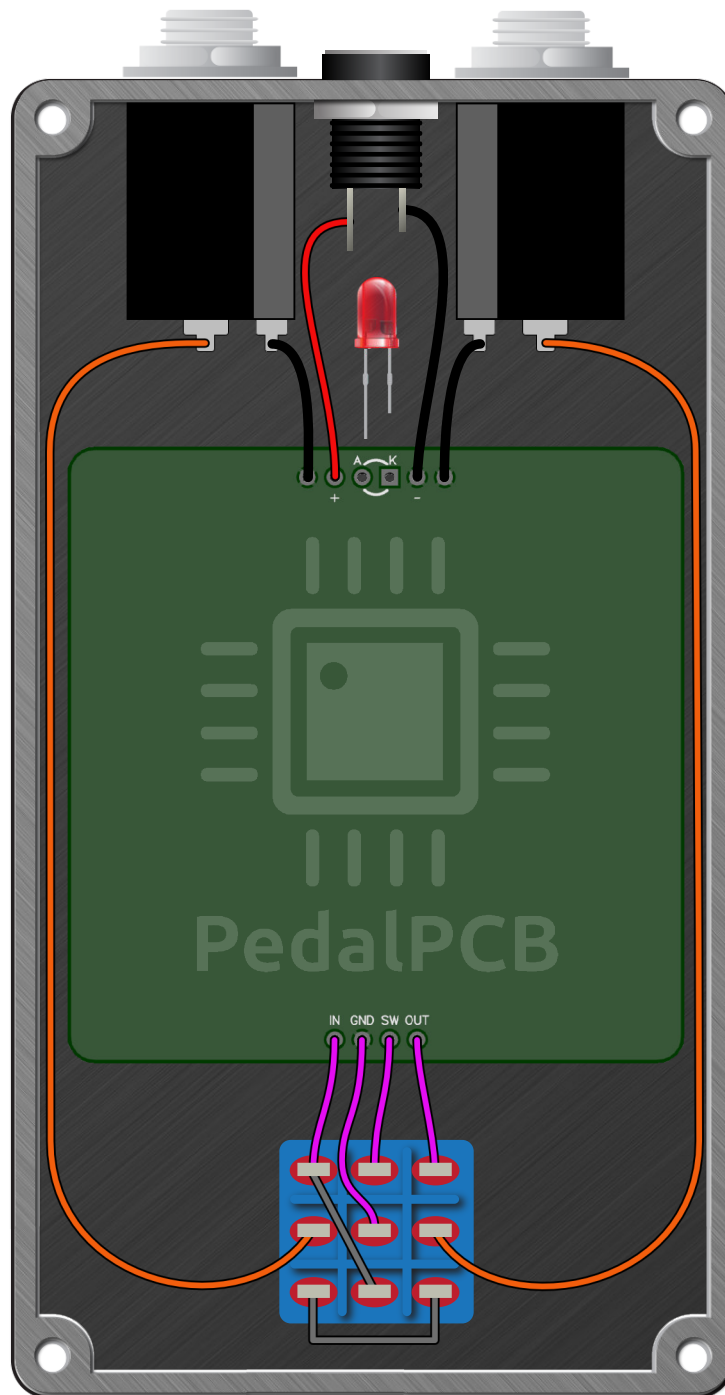
All trademarks and registered trademarks are the property of their respective owners. The company, product, and service names used in this web site are for identification purposes only. Use of these names, logos, and brands does not imply endorsement.

LOCATION	VALUE	TYPE	NOTES
R1	2M2	Resistor, 1/4W	
R2	2M2	Resistor, 1/4W	
R3	4K7	Resistor, 1/4W	
R4	10K	Resistor, 1/4W	
R5	4K7	Resistor, 1/4W	
R6	4K7	Resistor, 1/4W	
R7	10K	Resistor, 1/4W	
R8	10K	Resistor, 1/4W	
R9	1K	Resistor, 1/4W	
R10	1K	Resistor, 1/4W	
R11	4K7	Resistor, 1/4W	
R12	5K6	Resistor, 1/4W	
R13	15K	Resistor, 1/4W	
R14	100K	Resistor, 1/4W	
R15	470K	Resistor, 1/4W	
R16	22K	Resistor, 1/4W	
R17	10K	Resistor, 1/4W	
R18	10K	Resistor, 1/4W	
R19	470K	Resistor, 1/4W	
R20	470K	Resistor, 1/4W	
R21	1K	Resistor, 1/4W	
R22	470K	Resistor, 1/4W	
R100	22R	Resistor, 1/4W	
R101	10K	Resistor, 1/4W	
R102	10K	Resistor, 1/4W	
CLR	4K7	Resistor, 1/4W	* LED current limiting resistor
C1	22n	Film capacitor, 7.2 x 2.5mm	
C2	1n	Film capacitor, 7.2 x 2.5mm	
C3	10n	Film capacitor, 7.2 x 2.5mm	
C4	33n	Film capacitor, 7.2 x 2.5mm	
C5	2n7	Film capacitor, 7.2 x 2.5mm	
C6	220n	Film capacitor, 7.2 x 5mm	
C7	220p	Ceramic capacitor	
C8	220n	Film capacitor, 7.2 x 5mm	
C9	4n7	Film capacitor, 7.2 x 2.5mm	
C10	220n	Film capacitor, 7.2 x 5mm	
C11	220n	Film capacitor, 7.2 x 5mm	
C12	220n	Film capacitor, 7.2 x 5mm	
C13	470n	Film capacitor, 7.2 x 5mm	
C14	100p	Ceramic capacitor	
C15	1u	Electrolytic capacitor, 5mm	
C16	100p	Ceramic capacitor	
C17	1u	Electrolytic capacitor, 5mm	
C18	47n	Film capacitor, 7.2 x 2.5mm	
C19	470n	Film capacitor, 7.2 x 5mm	
C20	470n	Film capacitor, 7.2 x 5mm	
C100	220u	Electrolytic capacitor, 5mm	
C101	100u	Electrolytic capacitor, 5mm	
C102	100n	Film capacitor, 7.2 x 2.5mm	
D1	1N4148	Signal diode, DO-35	
D2	1N4148	Signal diode, DO-35	
D3	1N4148	Signal diode, DO-35	
D4	1N4148	Signal diode, DO-35	
D100	1N5817	Schottky diode, DO-41	
IC1	TL072	Dual op-amp, DIP8	
IC2	TL072	Dual op-amp, DIP8	
IC3	MC33178	Dual op-amp, DIP8	Link
VOLUME	A100K	16mm right-angle PCB mount pot	
GAIN	A100K	16mm right-angle PCB mount pot	
TONE	B10K	16mm right-angle PCB mount pot	
CONTOUR	A10K	16mm right-angle PCB mount pot	

Nine Ball Overdrive

Schematic Diagram





Nine Ball Overdrive

Drill Template
125B Enclosure

